

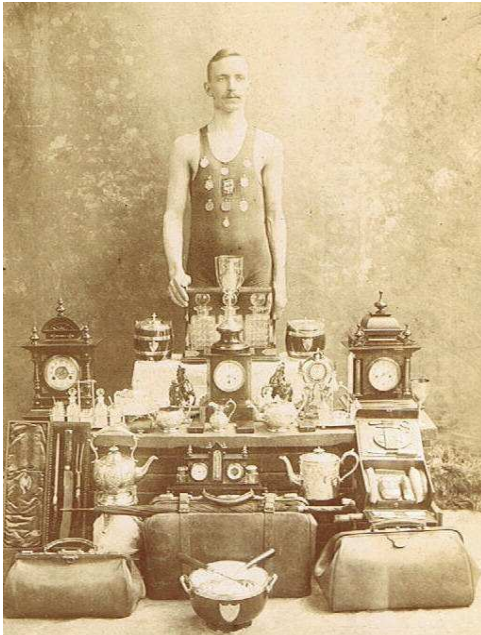
ABOUT MEN AND THEIR FAMILIES

We would like to talk to you about your hobbies, interests and talents and whether you have things in common with other people in your family.

What sort of person is your father, mother, brother or sister? Are members of your family like each other or are you all different? What do you think you have in common with your grandparents, your uncle, stepbrother or ancestors?

Whoever is in your family we are interested in talking to you about them.

“Are you like your grandad?”



TAKING PART

We are interviewing around 30 people of all ages and from a variety of social, cultural, religious and family backgrounds about their family relationships.

What will the interviews involve?

The interview will last for an hour or so and will take the form of an informal chat about you and your family.

How to take part

If you think you would like to take part, you can complete and return the enclosed reply slip or e-mail or phone Katherine Davies (her contact details are on the back page of this leaflet). A researcher will then contact you to arrange a convenient time for the interview which can take place at your home or at another location if you would prefer. Please feel free to contact us if you have any questions about the research. If you decide to become involved, you are still free to withdraw from the research at any time and without giving a reason.

“Are you good at the same things as your dad, uncle or brother?”

“What do you have in common with your cousins?”



“Where do you fit in?”

“Are you different from others in your family?”

“Do you ever think your son has your Father’s eyes, or your Mother’s temper, or your patience?”

“Are you more like your friends than your family?”

“Do you feel annoyed when people say you look like your Dad?”

HOW THE RESEARCH WILL BE USED

Publications

The findings will be published in a number of forms, in print and electronically, including reports, articles, books and presentations. They will be of interest to academics and to others who are interested in what families are like.

Ethical practice

This project will abide by the British Sociological Association's statement of ethical practice (you can view this at <http://www.britisoc.co.uk/equality/63.htm>). Any information you give us will be held securely and treated in strict confidence. Real names will not be used in publications and reports. The anonymised data may in the future be archived for use by other researchers and for training purposes.

Possible outcomes of the research

Not many academics have talked to people about their families in this way before so we expect that this study will help to pave the way for new and exciting ways of thinking about families.

“Do you think people who spend time together become like each other?”

“Have you ever wondered where your nose comes from?”

FURTHER INFORMATION

This project is part of the ESRC's National Centre for Research Methods. There are projects underway as part of this Centre at Universities all over England and Wales. Our project is called 'Real Life Methods' because it is about researching people's real, everyday lives.

The project began in October 2005 and will run until the end of September 2008.

For more information about the research, please feel free to contact a member of our team:

Katherine Davies, Research Associate
0161 275 2516
Katherine.Davies@manchester.ac.uk

Professor Jennifer Mason
0161 275 2494
Jennifer.Mason@manchester.ac.uk

www.reallifemethods.ac.uk

**Real Life Methods (a node of the NCRM)
Living Resemblances Project
Sociology
Arthur Lewis Building
The University of Manchester
Oxford Road
Manchester
M13 9PL**

MANCHESTER
1824

The University
of Manchester

Who do you take after?

An invitation to take part in a research project about men and their families



ESRC National Centre for
**Research
Methods**