

MANCHESTER
1824

The University of Manchester

SCHOOL OF SOCIAL SCIENCES



UNDERGRADUATE STUDIES 2014

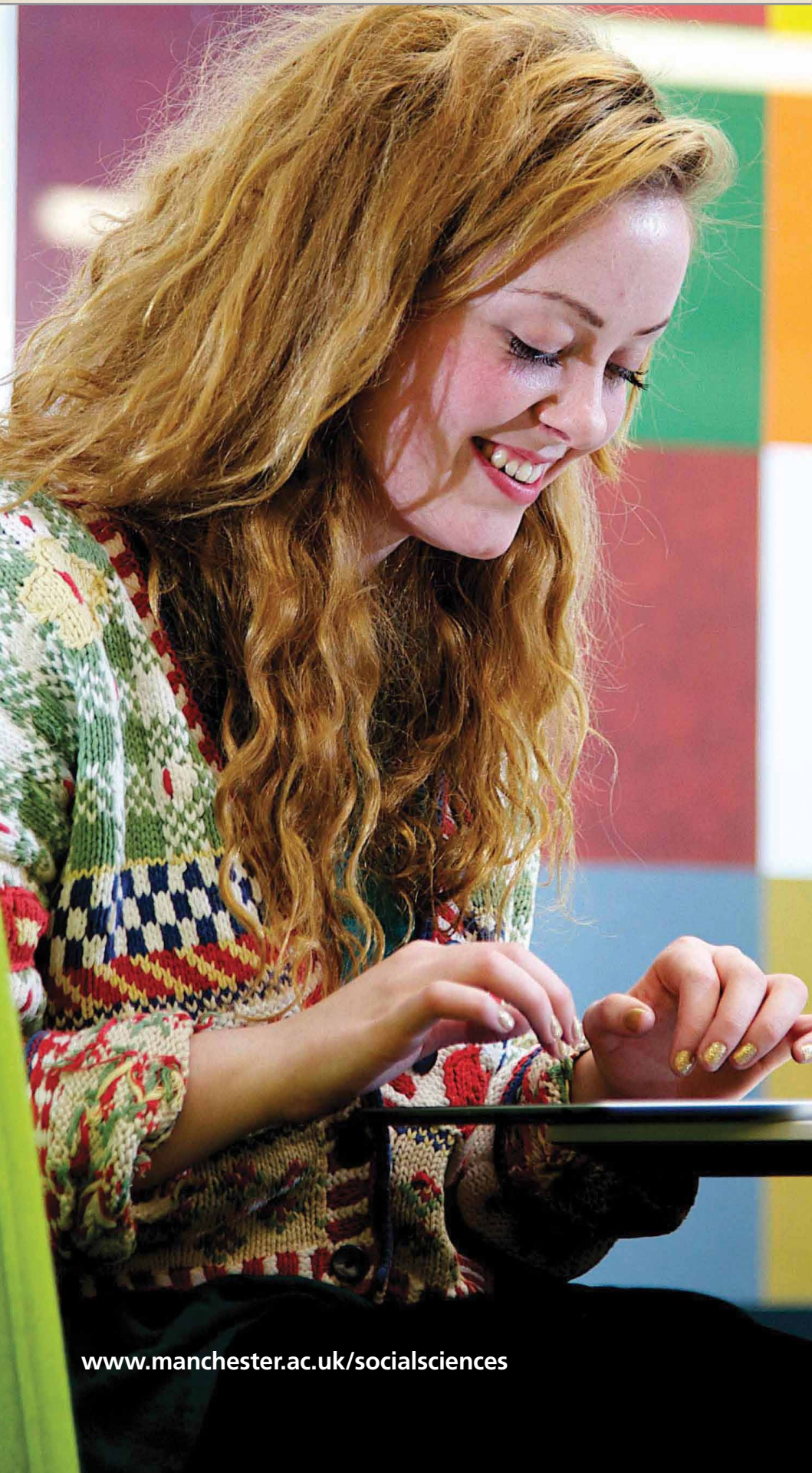
PHILOSOPHY

POLITICS

SOCIAL ANTHROPOLOGY

SOCIOLOGY

BA SOCIAL SCIENCES



SCHOOL OF SOCIAL SCIENCES

UNDERGRADUATE STUDIES 2014

PHILOSOPHY
POLITICS
SOCIAL ANTHROPOLOGY
SOCIOLOGY
BA SOCIAL SCIENCES

CONTENTS

OUR UNIVERSITY	4
OUR CITY	5
YOUR EXPERIENCE	5
PHILOSOPHY	6-9
POLITICS	10-13
SOCIAL ANTHROPOLOGY	14-19
SOCIOLOGY	20-23
BA SOCIAL SCIENCES (BASS)	24-27
CAREER OPPORTUNITIES	28-29
STUDENT SUPPORT	30
FIND OUT MORE ONLINE	31
VISITING AND CONTACTING US	32

WHY MANCHESTER?



OUR UNIVERSITY

Making Things Happen

Proud and ambitious, down to earth and friendly, we offer you a world class learning experience that's rooted in a rich education heritage at the University of Manchester. We focus on making things happen, turning enthusiasm into achievement and ground-breaking theory into cutting edge practice.

Research and innovation feeds into our courses, where you'll find countless opportunities for extra-curricular activities and skills development. All this and more at the heart of Britain's most popular student city.

Learn more about us
www.manchester.ac.uk/aboutus

OUR CITY

Original and Modern

Manchester is known as the 'original modern' city, thanks to both its industrial revolution heritage and an enduring progressive, can-do attitude, resulting in ideas that challenge convention, actions that change society, and attractions that capture the imagination.

We're proud to be part of the UK's most popular student city, which shakes up the music scene, nurtures cultural creativity, tantalises tastebuds, showcases international sporting achievements, encourages entrepreneurship, attracts big business, and entertains a sociable, multicultural community with warmth, wit and a lot of fun.

Discover Manchester from a student's perspective:
www.manchester.ac.uk/cityofmanchester

YOUR EXPERIENCE

More than a degree

University of Manchester students are a diverse and fascinating bunch, drawn from all corners of the globe, united in their goal to build a better future for themselves via a world class educational experience of a lifetime.

Our student experience is geared towards giving you practical skills, personal development opportunities and a professional network of colleagues and friends that will set you up for success through out your life.

Discover the Manchester experience:
www.manchester.ac.uk/ug/manchestereperience



PHILOSOPHY



What is Philosophy?

Philosophy is the study of the most general and fundamental features of reality, including ourselves, and the concepts, theories and practices we use to try to understand and cope with them.

Philosophical questions include:

- Is free will compatible with a scientific worldview?
- Is everything that exists in space and time entirely physical?
- Do abstract objects outside of space and time, such as numbers, really exist?
- Does God exist?
- Is time travel to the past possible?
- What makes something a work of art?
- What makes something the morally right thing to do?

- Is individual liberty the overarching political value?
- Can anything be known for certain?

What do the above questions have in common? They are very abstract and difficult – and they are fundamental, in the sense that answers to them are presupposed by all other intellectual enquiries. They cannot themselves be answered by engaging in scientific experiment. The only way to approach them is by using reasoned argument.

By studying Philosophy, you will develop your own responses to fundamental questions that have been occupying reflective souls for over 2,000 years and become familiar with on-going debates. You will acquire highly transferable skills of analytical and critical thinking, reasoned argument and clear, systematic expression of ideas, all of which are universally applicable in all walks of life and work.

Entry Requirements

A Level: AAB

GCSE: B in Maths and English

IB: 34 points

Find more online at www.manchester.ac.uk/ugcourses

Student Profile: Kristina Boneva

"After graduating I gained a place on Manchester Masters, a placement based postgraduate course in Business and Marketing.

I think my degree has helped me in more ways than I can list! One of the things that doing Philosophy teaches you is to think on your feet, focus your arguments and state your views in a clear concise manner so that you can convince your audience to side with you. I think these skills are extremely important in Business and feel well prepared to stand my ground, and win over clients. Also, since the course is centred around independent learning, I feel that it has helped me to be constantly pushing myself and take the initiative to make my life and career a success".

Kristina Boneva, BA Philosophy graduate

BA Philosophy (UCAS code: V500)

This is our single honours course for philosophy specialists.

We teach you about other people's ideas and how to develop your own. Learning about the major debates in the history of philosophy up to the present day is essential background for developing your own responses to the problems of philosophy. What is even more important, however, is learning to engage critically with these problems and some of the main attempts to solve them.

One of the key things you must learn is how to back up your claims with cogent and persuasive arguments. We want our students to develop the useful, highly transferable skills of deep analytical and critical thinking, reasoned argument and clear systematic expression of ideas. You will learn that there is more than one point of view on every question and that therefore each point of view must be able to stand its ground against others.

Major themes of Philosophy at Manchester

- Metaphysics
- Epistemology
- Philosophy of mind and psychology
- Philosophy of language
- Philosophy of science and mathematics – Aesthetics
- History of analytical philosophy
- Ethics
- Social and political philosophy
- Philosophy of Religion

Philosophy fact file

- There are fourteen permanent members of the academic teaching staff and around 100 single-honours philosophy students across all three years.
- All permanent members of the philosophy teaching team are internationally recognized researchers publishing their work in journals and books and giving talks around the world.
- The student philosophy society PhilSoc is very active in organizing social events, such as guest speakers, reading groups, and philosophy film nights.
- Our philosophy graduates go on to a range of careers, including government, management consultancy, finance, publishing, and the not-for-profit sector.

PHILOSOPHY

programme structure

Each year of study consists of 120 course credits with the option of taking one unit per year outside Philosophy, in a language or another social science subject, for example. Each course unit listed below is worth 20 credits.

Year 1

Year 1 provides you with a grounding in philosophical traditions, themes and problems:

- Values We Live By
- Discovering Reality
- Mind and World
- Critical Thinking
- Philosophy and Social Science

Year 2

You will develop and deepen your understanding of issues introduced in the first year and are able to choose new and more advanced topics to explore. Course units include:

- Symbolic Logic
- Ethics
- Aesthetics
- Philosophy of Religion
- Locke, Berkeley and Hume
- Philosophy of Mind
- Philosophy of Science
- Phenomenology

Year 3

Third year course units offer specialised and in-depth explorations of issues led by original researchers in the field. You also undertake a substantial independent piece of research on a topic of your choosing, which leads to a dissertation of 6,000 – 7,000 words. Course units include:

- Epistemology
- Metaphysics
- Philosophy of Language
- Philosophy of Music
- Personhood and Freedom of the Will
- Wittgenstein
- Kant



Other ways to study Philosophy at Manchester

Design your own degree!

You can combine the study of Philosophy with other social sciences subjects as part of the BA Social Sciences see page 24 for more details.

www.socialsciences.manchester.ac.uk

Philosophy is also available as part of the following degrees:

BA Politics, Philosophy and Economics (PPE)

www.socialsciences.manchester.ac.uk

BSc Mathematics and Philosophy

www.manchester.ac.uk/math

BSc/MPhys Physics with Philosophy

www.manchester.ac.uk/physics

Entry Requirements

A Level: AAB

GCSE: B in Maths and English

IB: 34 points

Find more online at www.manchester.ac.uk/ugcourses

For more information about course units, staff research or Economics events go to
www.socialsciences.manchester.ac.uk/disciplines/philosophy

POLITICS

AND INTERNATIONAL RELATIONS



Politics at Manchester

Politics at Manchester is structured around three core themes: Comparative Politics, International Politics and Political Theory. This structure extends across everything we do, from undergraduate teaching to top-level research.

Our significant size allows us to support internationally recognised research across a broad range of areas within and across these themes, including several large and distinctive specialist research clusters. This also contributes to the quality of our teaching: at undergraduate level, we offer you a wide range of course units that build directly on our research expertise.

Major Themes of Politics at Manchester

- British and American Politics
- The European Union
- Comparative Politics
- Political Theory
- International Political Economy
- Third World Politics
- International Relations
- Political Communication
- War, Security and Conflict
- Globalisation
- Gender and Ethics

Entry Requirements

A Level: AAB

IB: 35 points

Find more online at www.manchester.ac.uk/ugcourses

Student Profile: Sara Hodgkinson

"My time studying Politics and International Relations at Manchester has been enlightening, inspiring, and ultimately very rewarding. The material covered on this particular course is incredibly comprehensive. There is the opportunity to engage with topics ranging from ancient Western political thought to British political affairs, to contemporary conflicts in the Middle East, and more besides. One of the best things about my degree has been the opportunity to spend a semester abroad in Singapore – this was an experience which greatly benefited me on an educational level and also allowed me to develop many other personal skills.

The Politics department at Manchester is very supportive – student feedback is encouraged and taken on board, and lecturers are very good at responding to individual queries and needs. There are also many politically focused societies within the University which you can get involved with to further your overall university experience. The city of Manchester is also a really great place to study with a great student vibe, plenty of culture and a diverse body of students from all over the world. I would fully recommend studying Politics and IR here at Manchester!"

Sara Hodgkinson, current third year
Politics and International Relations student.

BSocSc Politics and International Relations (UCAS code: L200)

This is our single honours course for Politics specialists.

We will help you to develop solid intellectual foundations within the discipline, while also giving you increasing choice and diversity of subjects and approaches as you progress through your second and third years.

In the first two years you will take courses drawn from each of our three core areas of study, Political Theory, Comparative Politics and International Relations. You will also be able to choose options from other discipline areas either from within the School of Social Sciences, such as Economics or Sociology, or in an appropriate subsidiary subject, such as History, Philosophy or a language. By the final year, you will have acquired an advanced understanding of Politics and one which has prepared you to study a selection of our specialised year three options which reflect the research expertise of our staff. You will also write a dissertation with the help of a dedicated supervisor who will guide you through the process of producing a substantive 15000 word dissertation on a topic of your choosing.

Politics Fact File

- Number of places: 50
- Number of applications: 430
- Members of staff in Politics: 45
- Politics at Manchester provides cutting edge research in Analytical Political Theory, Comparative Public Policy, Electoral Politics, Global Political Economy, and Poststructuralism and Critical Thought.
- From 2015 Manchester is the new home of the British Election Study.
- Percentage of students in full time work or further study 6 months after graduation: 90%
- Recent graduate employers: Shelter, Barclays, Google, Ministry of Justice, The Co-operative, Deloitte.
- Excellence in Teaching: Politics staff have won University teaching Excellence awards (2010-11, 2011-12) and achieved national recognition twice winning the Political Studies Association Sir Bernard Crick Prize for Outstanding Teaching (2007, 2012).

POLITICS AND INTERNATIONAL RELATIONS

programme structure

Each year of study consists of 120 course credits with the option of taking one unit per year outside Politics for example in a language or another social science subject. Course units are worth either 10 or 20 credits.

Year 1

The first year provides you with a grounding in the three sub-areas of Comparative Politics, Political Theory and International Relations.

Compulsory units:

- Introduction to Comparative Politics
- Introduction to International Politics
- Introduction to Political Theory
- Research and Study Skills

Optional units:

- Britain in a Global Context

And/or:

- Up to 40 credits from outside Politics

Year 2

You continue to study the three sub-fields introduced in the first year. You also write an extended essay (or independent project) of 5-6,000 words on a topic of your choosing.

Compulsory units:

- Freedom and Equality: Contemporary Debates
- The Politics Project

Optional units:

- The Politics of Globalisation
- The Politics of Development
- Comparative European Politics
- National Politics of German
- From Blitz to 'Big Society': Politics and Society in Britain since 1940
- Security Studies
- Questions about International Politics
- Social Movements from Political Change
- Chinese Politics Today
- The Politics of Policy Making
- Mediterranean Politics

Year 3

By the third year you will have acquired a background in political science that will prepare you for the whole range of more specialised options that we offer, and for the final year dissertation on a topic of your choosing.

Compulsory units:

- Dissertation

Optional units:

- Ethical Issues in World Politics
- Gender, Sexuality and Politics
- Pluralism, Democracy and Citizenship
- Political Morality and 'Dirty Hands'
- Politics of the EU
- Terrorism and Political Violence in Europe
- The Politics of Hate
- War and the Politics of Ethics
- Russian Politics
- Parliamentary Studies
- Politics in the State of Nature
- Elections and Voters



Other ways to study Politics at Manchester

Design your own degree!

You can combine the study of Politics with other social sciences subjects as part of the BA Social Sciences (see page 24 for more details), or as part of the BA Economics and Social Studies:

www.socialsciences.manchester.ac.uk

Politics is also available on a number of other degrees including: BA Politics, Philosophy and Economics (PPE)

www.socialsciences.manchester.ac.uk

BA Law with Politics

www.manchester.ac.uk/law

BA Politics and Modern History

www.manchester.ac.uk/history

Entry Requirements

A Level: AAB

IB: 35 points

Find more online at www.manchester.ac.uk/ugcourses

For more information about course units, staff research or Economics events go to www.socialsciences.manchester.ac.uk/disciplines/politics

SOCIAL ANTHROPOLOGY



What is Social Anthropology?

Social Anthropology is the comparative study of culture, and asks what it means to be human. Contemporary Social Anthropology is a critical discipline that tackles an enormous variety of topics. These include questions about how people make families, worship gods, and organise their economic and political lives. Manchester anthropologists look at the social implications of reproductive and information technologies, they analyse the social meanings of consumer behaviour, they study violence, poverty and the means for resolving conflicts and alleviating human suffering.

Although anthropological studies are now conducted everywhere, from middle class suburbs and inner cities, from boardrooms to migrant labour camps, and from Papua New Guinea to Peru, what all our studies have in common is an awareness of human diversity. An anthropological approach means trying to see beyond what is usually taken for granted. This means trying to understand diverse customs and beliefs from the perspective of the people who practice those customs and hold those beliefs. It also challenges students own assumptions, showing how such assumptions shape our actions; in the process it also shows how we could think, and act, otherwise.

Such an ability to think out of the box is a vital skill in today's increasingly interconnected, and socially and culturally complex, world.

Entry Requirements

A Level: ABB

IB: 34 points

Find more online at www.manchester.ac.uk/ugcourses

Student Profile: Rachel Goodier

"Studying Social Anthropology is both engaging and interesting. The course is well structured, and provides a comprehensive base of social theory upon which it builds the more complex and interesting ideas which make the course such a great overall experience. Manchester as a city, provides a great cosmopolitan and vibrant background to the learning you do whilst on campus, and there is always plenty to do!"

Although Anthropology is challenging, in terms of both ideas and concepts, the support system is fantastic, and the growth rate of my ideas and thought process was beyond what I had expected upon arriving at university. We have a great community, both on and off the academic playing field, with debates and pub quizzes alike, and great lecturers and teaching assistants who are at the forefront of their research field, meaning you're always clued in on the latest field developments around the subject area. I would highly recommend Anthropology at Manchester to anyone!"

Rachel Goodier, second year Social Anthropology student

BSocSc Social Anthropology (UCAS code: L600)

This is our single honours course for Social Anthropology specialists.

It provides comprehensive knowledge of social anthropology, past and present. This includes learning about the distinctive character of Manchester Social Anthropology which is particularly known for its focus on political aspects of social and cultural life, the anthropology of visual and other sensory media, and anthropological study of new technologies. Above all, we aim to train you to think anthropologically, providing you with a cross-cultural and critical understanding of the major issues facing the world today.

The course also offers the 4 year option of **BSocSc Social Anthropology with International Study**, which enables you to spend a year abroad studying in one of our partner universities. In consultation with our Study Abroad Co-ordinator, you put together a package of appropriate course units at the host university and you write an experience based essay at the end of it. By the end of your degree course you will have gained practical cross-cultural experience of another student culture, as well as acquired knowledge, through

SOCIAL ANTHROPOLOGY



What is distinctive about Social Anthropology at Manchester

In the past, Manchester anthropology led the way in confronting difficult political and moral issues concerning the colonial systems within which anthropologists originally worked. In addition, what became known as the Manchester School pioneered the anthropological analysis of cities, social networks, and anthropological research 'at home', on our own doorstep as well as in other parts of the world.

Today we have one of the largest departments of anthropology in the UK. Our staff conduct research in Africa, Asia, the Middle East, Europe, Oceania and Latin America. We continue to focus on political issues, on cities, on both western and other parts of the world. We have also become particular specialists in visual and sensory media; the impact of new reproductive and genetic technologies; AIDS, sexuality and masculinities; cities, migration and infrastructures; urban and border politics; crafts, play and worship.

Entry Requirements

A Level: ABB

IB: 34 points

Find more online at www.manchester.ac.uk/ugcourses



Social Anthropology fact file

- Very high levels of student satisfaction (95% overall satisfaction in the 2012 National Student Survey),
- Commitment to research-led teaching, with senior staff teaching at all levels of the course, and dedicated research-led course, 'Current Anthropology at Manchester'
- One of the largest anthropology departments in the UK (18 full-time members of staff), allowing 1 to 1 dissertation supervision
- Opportunities for year-abroad study of anthropology at a partner University
- Vibrant student community: approx. 40 specialist students admitted each year
- Thriving student-led Anthropology society
- Opportunities to engage in 'real world' ethnographic research in the city of Manchester during the course
- Opportunities for hands-on training in visual anthropology, with access to an unrivalled library of ethnographic film

SOCIAL ANTHROPOLOGY

programme structure

Each year of study consists of 120 course credits. Units are worth either 10 or 20 credits.

Year 1

Few students will have studied anthropology previously. The first year is therefore structured to provide you with a strong foundation in key concepts, approaches and questions.

Compulsory course units:

- Cultural Diversity in Global Perspective
- Culture and Power
- Introducing Social Anthropology
- Studying Social Anthropology
- Regional Studies of Culture

Optional course units:

- Anthropology of Business
- Introduction to Digital Film Making

Or:

- A unit from outside Social Anthropology

Year 2

This year you look more in depth at the anthropological contribution to particular thematic areas of the study of human life, as well as developing your research skills and learning more about the cutting edge research of some of the Manchester staff.

Compulsory course units:

- The Ethnographer's Craft
- Current Anthropology at Manchester

Options include:

- Sex, Gender and Kinship
- Political and Economic Anthropology
- Anthropology of Religion
- Materiality, Sensoriality and Visuality

Plus:

- 20 credits from Year 3 options

Year 3

(or Year 4 for students taking the BSoSc with international study)

This year focuses on specialist courses which build on the research expertise of our staff. You also get the opportunity to conduct an independent piece of research (dissertation) which draws on the theoretical and methodological training received in years 1 and 2.

Compulsory course units:

- Arguing with Anthropology

Options include:

- Advanced anthropological study of a world region (e.g. Sub-Saharan Africa, Oceania, the Middle East)
- Afterlives of Soviet Socialism
- Anthropology of International Development
- Anthropology of Science, Magic and Experience
- Anthropology of the State
- Anthropology of Vision, Memory and the Senses
- Art, Cinema and Ethnography
- Exhibiting Cultures
- Cities and Migration
- Medical Anthropology

Please note that options vary from year to year and the above is an indicative selection.



Other ways to study Social Anthropology at Manchester

Design your own degree!

You can combine the study of Social Anthropology with other social sciences subjects as part of the BA Social Sciences (see page 24 for more details).

Social Anthropology is also available as part of the following degree:

BA Archaeology and Anthropology
www.manchester.ac.uk/archaeology

Entry Requirements

A Level: ABB

IB: 34 points

Find more online at www.manchester.ac.uk/ugcourses

For more information about course units, staff research or Economics events go to
www.socialsciences.manchester.ac.uk/disciplines/socialanthropology

SOCIOLOGY



Sociology is the study of social life and social change. It adopts the perspective that individual behaviour can only be understood by studying people's social context and their webs of connection. An investigative 'myth busting' discipline, sociology critically examines core assumptions about social life. Research and teaching are often motivated by the desire to improve or challenge the conditions of life and society, and sociology provides a critical perspective on how and why we might change our social worlds.

Major Themes of Sociology at Manchester

- Social Divisions and Inequality (class, gender and race)
- Social Movements
- Sustainability and Environment
- Social Theory
- Globalisation and Social Change
- Cultural Practices and Consumption
- Media and Technology
- Work and Economy
- Personal Life (family, intimacies and sexualities)
- Survey Methods and Qualitative Research
- Cities and Urban Life

Entry Requirements

A Level: BBB

IB: 32

Find more online at www.manchester.ac.uk/ugcourses

Student Profile: Stephanie Jones

"Currently finishing my 1st year studying sociology at Manchester, I can honestly say the year has flown by without me noticing as I've been enjoying it so much! The course has offered me a broad variety of interesting topics to explore and really challenged the way I have come to think about the social world. The lecturers and tutors have structured the course in a way that has really benefitted my transition from College to University in terms of work load and furthering my own interests. Sociology gives you a widely transferable skill set which benefits you from the very beginning when looking at future career prospects. The sociology society and peer mentoring scheme both offer student led activities, support and further points of contact which have been invaluable as I began my degree. I recommend sociology at Manchester to the highest degree for all aspects of the course and the fantastic opportunities both the city and the University have to offer!"

Stephanie Jones, 1st Year BsocSc Sociology, Chair of the Sociology Society

BSocSc Sociology (UCAS code: L300)

Our degree gives you the skills to analyse and interpret contemporary social developments and problems. You will explore how claims about social life are based on particular types of evidence and develop the skills to critically assess them. We will help you develop your analytical and investigative skills, training you in methods of social investigation in order to equip you with the skills needed for independent thinking, research and analysis.

Sociology Fact File

- Sociology fact file
- Number of places: 50
- Number of applications: 470
- Number of staff in Sociology at Manchester: 45
- Sociology was ranked joint first in the UK in the last Research Assessment Exercise in 2008
- We provide cutting edge research in Personal Life and Everyday Lives; Cultural Practices, Consumption and Sustainability; Social Divisions, Stratification, Inequalities and Socio-cultural Change; Social Ties, Networks and Social Movements; and Methodological Innovations.

SOCIOLOGY

programme structure

Each year of study consists of 120 course credits with the option of taking one unit per year outside Sociology for example in a language or another social science subject. Each course unit is worth 20 credits.

Year 1

Year 1 introduces you to sociological theory and methods of social enquiry. The aim is to offer something new to those who have completed Sociology A Level, as well as providing a basic foundation in the subject to those who have not.

Core units:

- From Modernity to Post Modernity I
- From Modernity to Post Modernity II
- Researching Culture and Society

Optional units:

- British Society in a Globalising World
- Sociology of Personal Life
- Media, Culture and Society
- Sociology of Media Arts
- Work Organisation and Society
- Technology, Communications and Culture

Year 2

Year 2 gives you the opportunity to develop your theoretical and substantive knowledge of social , and receive training in research methods that prepares you for conducting independent research in year 3.

Core units:

- Qualitative Social Research Design and Methods
- The Survey Method in Social Research

Optional units include:

- Globalisation and Developing Societies
- Sociology of Popular Music
- Sustainability, Consumption & Global Responsibilities
- Racism and Ethnicity in the UK
- Sociology of Spiritual Life
- New Media
- Sociology of Nature, Environment & Risk
- Work, Economy and Society
- Self and Society

Year 3

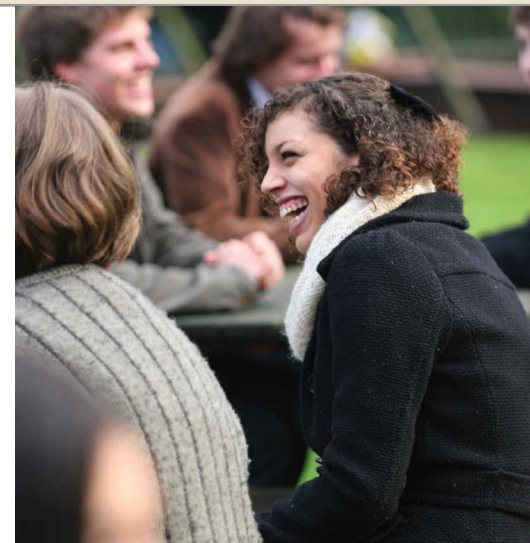
This year focuses on specialist courses which build on the research expertise of our staff. You also get the opportunity to conduct an independent piece of research which draws on the theoretical and methodological training received in years 1 and 2.

Core unit:

Dissertation

Options include:

- Technology and Society
- Power and Protest
- A Sociology of Family Life and Intimacy
- Urban Sociology
- Gender, Time and Change
- Creating Multicultural Britain
- Sociology of Human-Animal Relations
- Identity, Power and Modernity
- Reproduction, family life and new medical technologies



Other ways to study Sociology at Manchester

Design your own degree!

You can also study Sociology alongside other social sciences subjects as part of the BA Social Sciences degree course (See page 24 for more details).

Sociology is also available part of the following degrees:

BA History and Sociology
www.manchester.ac.uk/history

BA Linguistics and Sociology
www.alc.manchester.ac.uk/subjects/lel

BA Economics and Social Studies
www.socialsciences.manchester.ac.uk

Entry Requirements

A Level: BBB

IB: 32

Find more online at www.manchester.ac.uk/ugcourses

For more information about course units, staff research or Economics events go to
www.socialsciences.manchester.ac.uk/disciplines/sociology

BA SOCIAL SCIENCES (BASS)



Design your own degree!

Our BASS degree offers you the chance to sample a broad range of social sciences subjects before you decide what to specialise in. The main features of this degree are flexibility and choice.

How does BASS work?

The Social Sciences have many areas of overlap. Through your own selections from the extensive options we have available, you will be able to find connections and have the freedom to follow your own interests across disciplinary boundaries.

By giving you a broad foundation in the first year, during which you will study at least three subjects, it also gives you flexibility in choosing what subjects to concentrate on further. Studying one or two main disciplines in the second and third years ensures that you gain a high level of knowledge in these by the end of your degree.

You do not need to have studied social sciences before. We are looking for applicants with high levels of interest and motivation, and the ability to make informed choices to shape their own customised degree programme.

Student Profile: Robert Varley

"Studying Sociology and Criminology [as part of the BA Social Sciences] at University has been one of the wisest steps I have ever taken. I enjoy learning about society and it's fundamentals. Combining my study with Criminology has been something that I have not regretted, as I have such an array of modules to choose from. In Criminology, we look at patterns, explanations and theories...I find it truly fascinating. A highpoint of my first year has been the support I have been given throughout my course. We are kept up to date, given constant monitoring and always kept reassured. Enrichment alongside my degree is also readily available. I have worked on the Gateways scheme this year and find it fun to work in the field, with society and individuals. The first year for me has been truly joyful, I am eager to find what the later years of University have for me to thrive and develop".

Robert Varley, currently on the first year of BA Social Sciences, specialising in Sociology and Criminology

Pathways

Philosophy and Criminology
VL53

Philosophy and Politics
VL52

Politics and Criminology
LM29

Politics and Social Anthropology
LL26

Politics and Sociology
LL23

Social Anthropology and Criminology
LM69

Social Anthropology and Philosophy
LV65

Social Anthropology and Sociology
LL63

Sociology and Criminology
LM39

Sociology and Philosophy
LV35

Due to the flexibility of the programme, you are not tied to the course code you apply to through UCAS.

Entry Requirements

A Level: ABB

GCSE: C in English and Maths

IB: 34 points

Find more online at www.manchester.ac.uk/ugcourses

BA SOCIAL SCIENCES (BASS) programme structure

Each year of study consist of 120 course credits. Each unit is worth either 10 or 20 credits.

Year 1

Year 1 gives you a broad introduction to the social sciences, enabling you to make an informed choice of areas to specialise in for your second and third years.

Compulsory unit::

- Engaging with Social Research

Optional units:

You would take credits from a minimum of three subject areas as below.

Philosophy units include:

- Values We Live By
- Critical Thinking
- Mind and World
- Philosophy and Social Sciences

Politics units include:

- Introduction to Comparative Politics
- Introduction to International Politics
- Introduction to Political Theory
- Britain in the Global Context

Social Anthropology units include:

- Culture and Power
- Culture and Diversity in Global Perspective
- Culture and Society
- Introduction to Business Anthropology

Sociology units include:

- British Society in a Globalising World
- From Modernity to Post Modernity
- Media, Culture and Society
- Sociology of Personal Life

Criminology units include:

- Crime and Society
- Foundations of Criminal Justice
- Psychology, Crime and Criminal Justice

Other Optional course units:

- Microeconomics
- Macroeconomics
- An Introduction to Development
- Applied Statistics for Economists

Year 2

It is at this stage that you begin to specialise. If you decide to specialise in one subject you will take between 60 – 80 credits in it. If you decide to specialise in two subjects you will take at least 40 credits in each.

You can also take 20 credits of free choice for example a language, or you could choose to study abroad in the second semester.

For more information about Year 2 options go to www.socialsciences.manchester.ac.uk

Year 3

All students complete a dissertation in one of their areas of specialisation.

Again if you are specialising in one subject you take between 60 – 80 credits in it. If you are specialising in two subjects you must take at least 40 credits in each.

For more information about Year 3 options go to www.socialsciences.manchester.ac.uk



Entry Requirements

A Level: ABB

GCSE: C in English and Maths

IB: 34 points

Find more online at www.manchester.ac.uk/ugcourses

For more information about course units, staff research or Economics events go to www.manchester.ac.uk/socialsciences

CAREER OPPORTUNITIES



Our degrees have an excellent reputation for employability and our graduates have gone on to pursue careers in a wide range of paths, reflecting the broad based nature of our programmes. Our graduates are doubly blessed, as the University of Manchester has one of the best records for placing graduates with employers of any British university, and we are currently the most targeted university by top graduate recruiters in the UK. Studying social sciences develops critical thinking and debating skills, which are essential aspects of many different careers, and employers today increasingly recognise the value of a degree that encourages students to think independently and approach a wide range of problems from diverse angles.

Traditional avenues that have been popular with our graduates include local and national government, the Civil Service, journalism and the media, charities, social work, teaching, law, consultancy, public and private sector management and social research.

Some of our most recent graduates have successfully obtained positions at Shelter, Barclays, Google, the Co-operative, Ministry of Justice, Deloitte, HMRC, RBS, Barnardos and UNICEF.

Careers Service

Our award-winning Careers Service will work in partnership with you throughout your degree to develop and improve the skills that employers look for. It can also help you find part-time jobs, volunteering and work experience placements while you study here.

Find out more online
www.manchester.ac.uk/careers

Manchester Leadership Programme (MLP)

The MLP is a University-wide, second year course unit consisting of a unique combination of academic credits and volunteering, MLP offers you the opportunity to:

- Learn the importance of leadership that promotes the social, economic and environmental sustainability
- Gain an insight into some of the key challenges facing 21st century society
- Develop transferable skills such as team-working, debating and influencing skills, and project management
- Increase confidence in written communication and analytical thinking skills

Find out more:
www.manchester.ac.uk/mlp

Volunteering

Volunteering is a great way to enhance your university experience. As well as being fun, it can help you develop essential skills that employers look for, such as project management, communication and team work skills. It also gives you the opportunity to meet new people, and enjoy the feel good factor that comes from knowing you're making a difference in the community.

Our University has a dedicated Volunteering and Community Engagement Team, which can support and encourage you with getting involved in volunteering.

Postgraduate study

A popular route for our graduates is to pursue postgraduate study. We offer a wide range of specialist masters programmes within our School of Social Sciences, to suit all undergraduate pathways.

Find out more:
www.manchester.ac.uk/pgcourses

STUDENT SUPPORT

Student Induction

An induction programme for all new students takes place during Welcome Week to help you settle in. This includes:

- Welcome talks
- The opportunity to meet students on your course and other courses within the School of Social Sciences
- Meetings with your programme director, student support staff and your peer mentor
- Presentations from key University services
- The opportunity to join student societies and various social events

Pastoral care

All new students are assigned an Academic Advisor who will provide you with support and advice in one-to-one meetings at regular intervals throughout your degree. Lecturers and course directors hold weekly Office Hours to discuss any aspect of individual course units.

Student mentor scheme

We operate a peer mentoring scheme which provides first year students with a second or third year trained mentor who will be able to provide practical assistance with settling into student life. Sometimes there may be things that you feel more comfortable discussing with other students rather than university staff. In this case, mentors are extremely beneficial, and can help you to make the most of your time at Manchester, both academically and socially.

Student Support Office

We have a dedicated undergraduate support office within the School of Social Sciences, who will be your first point of contact for any ill health or personal problems which are affecting your work.

Students' Union

The University of Manchester Students' Union (UMSU) is a student-led organisation and has some of the most active student societies in the country, as well as a wide range of support and welfare services. UMSU has an advice centre to assist you with academic issues and a peer support centre whose services include Nightline, a confidential listening and information service run for students by students.

www.umsu.manchester.ac.uk

FIND OUT MORE ONLINE

Accommodation

Discover your potential new home:
www.manchester.ac.uk/accommodation

Admissions and Applications

Everything you need to apply to Manchester:
www.manchester.ac.uk/ug/howtoapply

Alan Gilbert Learning Commons

A brand new independent learning resource for our students:
www.manchester.ac.uk/library/learningcommons

Childcare

Support for students who are also parents:
www.manchester.ac.uk/childcare

Disability support/applicants with additional support needs

For any additional support needs:
www.manchester.ac.uk/dso

Funding and Finance

Fees, loans, scholarships and more:
www.manchester.ac.uk/studentfinance

International Students

Discover what we offer our multinational community:
www.manchester.ac.uk/international

IT Services

Online learning, computer access and IT support:
www.manchester.ac.uk/itservices

Library

One of the UK's largest and best-resourced university libraries:
www.manchester.ac.uk/library

Prospectus

Access or order a copy of our prospectus
www.manchester.ac.uk/ug/courses/prospectus

Sport

Excellent clubs, leagues, classes and facilities, plus sports scholarships:
www.manchester.ac.uk/sport

Study Abroad

It is possible to spend a semester at an overseas university whichever degree course you pick:
www.manchester.ac.uk/undergraduate/courses/studyabroad

Support

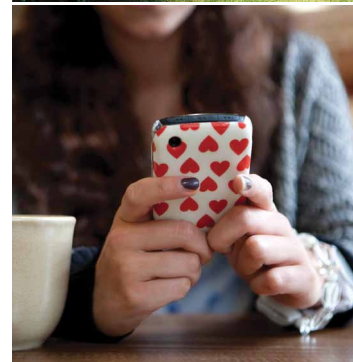
Dedicated academic, personal, financial and admin assistance
<http://my.manchester.ac.uk/guest>

Students' Union

Societies, events, peer support, campaigns and more:
www.umsu.manchester.ac.uk

Videos

See and hear more about us
www.manchester.ac.uk/aboutus/video
www.youtube.com/user/universitymanchester



Visiting us

Open days

The university organises open days every year in June and October. These are an opportunity to find out more about the course, meet students and staff and tour the campus. You will also get the opportunity to find out more about accommodation, finance, study abroad and our facilities. For more information go to:

www.manchester.ac.uk/undergraduate/opendays

Post-application visit days

If you apply and receive an offer we will invite you to a visit day where you will have the opportunity to learn more about the School, teaching and learning, study opportunities and student life.

Contact us

For further information please contact:

School of Social Sciences
Undergraduate Admissions Office
Arthur Lewis Building
University of Manchester
Oxford Road
Manchester
M13 9PL

Tel: 0161 275 1473/4470/4748/2291

Email: socialsciences@manchester.ac.uk

www.manchester.ac.uk/socialsciences

Disclaimer

Please note that available course units vary from year to year, and those included are an indicative selection.

