

MANCHESTER
1824

The University of Manchester

The School of Social Sciences

Postgraduate Guide





Contents

- P04 Your City -
Your University
- P06 Accommodation
- P07 Fees and funding
- P08 Postgraduate study
- P09 Our research
- P10 Applying to Manchester
- P12 Contact

Your City – Your University

Manchester is a vibrant, progressive city with a rich cultural heritage, and the University is proud to be part of the UK's most popular student city. Manchester enjoys a thriving cultural scene, with annual festivals celebrating everything from its international presence to contemporary literature and the arts.

Students at The University of Manchester are a diverse and fascinating group, drawn from all corners of the globe and united in their ambition to create a great future for themselves via a world-renowned educational experience.

Research and innovation is the foundation of all our postgraduate courses, and at Manchester you will find high-quality training and educational support, designed to help you achieve your goals.

We offer pioneering courses that draw upon our world-leading research and strong links to global industry. You'll quickly develop the skills, knowledge and experience that will stand you in good stead for future employment.

We look forward to meeting you.



Professor Chris Orme,
Head of School





Accommodation

We offer a huge choice of accommodation in University halls of residence. We'll do everything we can to help you find somewhere to live where you'll feel right at home.



There are a wide range of options available to students including:

- Postgraduate-only accommodation
- Single or mixed gender accommodation
- Catered or self-catering facilities
- Shared or en-suite facilities
- Specially adapted rooms for students with disabilities
- Accommodation for families and partners

Contact our Accommodation Office:

+44 (0)161 275 2888

accommodation@manchester.ac.uk

www.manchester.ac.uk/accommodation

Manchester also has plenty of private accommodation available for rent – contact Manchester Student Homes for further information. Jointly owned by the Manchester universities, this is the city's only housing bureau that advertises university-approved accommodation.

Accommodation in Manchester is relatively inexpensive and is never far from a regular bus service to the main University campus.

Contact Manchester Student Homes:

+44 (0)161 275 7680

manchesterstudenthomes@manchester.ac.uk

www.manchesterstudenthomes.com

Fees and funding

Your fees will cover the cost of your study at the University, as well as charges for registration, tuition, supervision, examinations and graduation (excluding graduation robe hire). Fees vary for each postgraduate course.

Payment of tuition fees will also entitle you to membership of The University of Manchester Library, the Students' Union and the Athletic Union.

The fee for each course or programme can be found on the course information pages – please see:

www.socialsciences.manchester.ac.uk/study/masters/fees-and-funding

www.socialsciences.manchester.ac.uk/study/postgraduate-research/funding



International students

For international students, studying in the UK can be great value for money. UK degree courses are generally shorter than in the US and Australia because they are more intensive – full-time postgraduate master's courses are only one year, compared to two in most other countries.

This makes a postgraduate course in the UK more efficient in terms of your time and your money.



Funding

UK/EU students may also be entitled to a University bursary or scholarship to support you through your studies. There are numerous different bursaries available; please see our funding pages at:

www.socialsciences.manchester.ac.uk/study-with-us/fees-and-funding/postgraduate-taught-funding/

www.socialsciences.manchester.ac.uk/study-with-us/fees-and-funding/postgraduate-research-funding/

Alternatively please contact us for further information and eligibility criteria.

Contact

Postgraduate Admissions Office
The School of Social Sciences
pg-soss@manchester.ac.uk
Tel: +44 (0)161 275 4471 or +44 (0)161 275 1296

Postgraduate study

Like many prospective postgraduate students, you probably already have a clear idea of what you want to study and what subject you are interested in.

Here at Manchester, we offer world-renowned training, supervision and facilities. Our students pursue intellectually challenging projects within a nurturing and stimulating environment.

You will be part of a diverse, interdisciplinary postgraduate community that reaches far beyond the University.



The University of Manchester:

- works in partnership with institutions outside the higher education sector to enable our postgraduates to produce research with a wider relevance and to develop their knowledge and expertise;
- is a partner in the AHRC Centre for Doctoral Training (NWCDDTP) and the ESRC North West Social Sciences Doctoral Training Partnership (NWSSDTP) in collaboration with the Universities of Keele, Lancaster, and Liverpool.

The School of Social Sciences has a number of Research Centres and networks spanning all of our discipline areas: from the Centre on Dynamics and Ethnicity (CoDE) to the Centre for Growth and Business Cycle Research (CGBCR), and plenty more in between.

For further information on all our research centres please see:

<http://www.socialsciences.manchester.ac.uk/research/centres/>

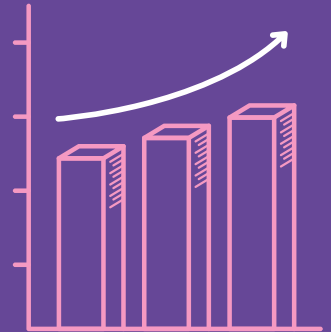
Taught postgraduate courses include classes run by Manchester academics and a programme of assessed work. These are particularly suitable if you want to gain a specialised knowledge of your chosen subject area.

As a postgraduate researcher at Manchester, you'll undertake independent research under the supervision of a senior academic, contributing to the body of professional knowledge in your specialist area.

Our research

Whether you are studying for a taught master's or research programme, you'll be directly involved with cutting edge research. In 2012/13, we attracted more than £280 million in external research funding, and an impressive 78% of our research activity was rated 'world-leading' or 'internationally excellent' in the most recent Research Excellence Framework (REF).

The Research Excellence Framework (REF) confirms Manchester as one of the leading centres for Social Science research in the UK. The results of REF2014 show that Social Science research at Manchester is ranked 3rd in the UK, based on research power (calculated by Grade Point Average (GPA) times number of staff submitted or by 4*/3* times number of staff submitted).



At Manchester you will benefit greatly from our continued investment in the best research facilities as well as a dynamic research culture that encourages innovative, cross-disciplinary collaboration. Our courses and programmes are led by distinguished tutors and fellow researchers working at the forefront of their disciplines, ensuring that your qualification comes with a reputation that will open doors across the world.

We also work with other universities on a range of initiatives. We are part of the N8 Research partnership with seven other northern universities, working together in areas ranging from nanotechnology to the impact of arts and humanities.

Close partnerships with organisations from many different sectors inform our research and postgraduate programmes, providing exceptional opportunities for research with commercial applications, as well as the chance to develop business and entrepreneurial skills and experience relevant to your future career.

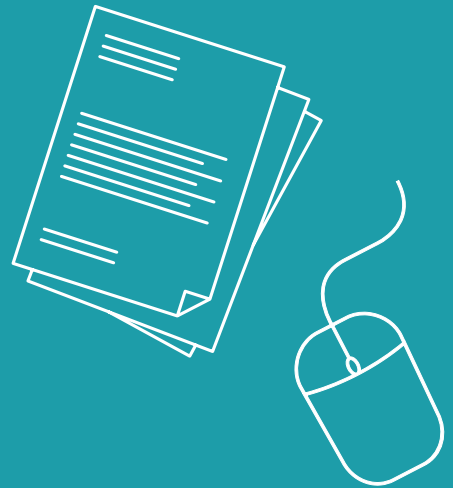


Applying to Manchester

Submitting an application to study at
The University of Manchester couldn't be simpler...

Please go to the links below to apply online for
our taught and research postgraduate degrees:
www.manchester.ac.uk/study/masters/admissions/apply

[www.manchester.ac.uk/study/postgraduate-research/
admissions/how-to-apply](http://www.manchester.ac.uk/study/postgraduate-research/admissions/how-to-apply)



International students

We also have educational consultants in some overseas countries who can assist you with preparing and submitting your application.

Visit your country page on our website to find out more:

www.manchester.ac.uk/international/country

We also recognise many different qualifications from around the world. For details of international entry requirements and equivalencies please visit:

www.manchester.ac.uk/international/country

English language requirements

An ability to communicate effectively in English is vital to your academic performance and progress at Manchester. Improving your English is also a valuable long-term skill that will enhance your job prospects.

For further information on the application process, language testing, eligibility and support, please see the course information pages at:

[www.socialsciences.manchester.ac.uk/study/
masters](http://www.socialsciences.manchester.ac.uk/study/masters)

[www.socialsciences.manchester.ac.uk/study/
postgraduate-research/](http://www.socialsciences.manchester.ac.uk/study/postgraduate-research/)

Alternatively please contact the postgraduate admissions office:

Victoria Barnes

Postgraduate Admissions Office

The School of Social Sciences

The University of Manchester

Manchester

M13 9PL

victoria.barnes@manchester.ac.uk

+44 (0)161 275 1296/4471 – taught courses

+44 (0)161 275 4743 – research programmes

The University of Manchester
Oxford Road
Manchester
M13 9PL
United Kingdom

www.socialsciences.manchester.ac.uk

Royal Charter Number RC000797

Postgraduate Admissions Office
The School of Social Sciences
The University of Manchester
Manchester
M13 9PL

pg-soss@manchester.ac.uk

+44 (0)161 275 1296/4471 – taught courses

+44 (0)161 275 4743 – research programmes

Economics at Manchester

Manchester offers you:

- one of Europe's leading research departments;
- internationally renowned postgraduate training;
- a wide range of master's courses;
- a doctoral programme with funding possibilities.

Manchester is a leading centre for economics research and research-led teaching. Graduate students from across the globe come to study economics at Manchester, attracted by its first-class postgraduate training and supervision in the core and specialist areas of economics.

Many famous names from the world of economics have worked here at Manchester, including three Nobel Prize winners. Interdisciplinary research is actively pursued here, with many courses involving a number of different Schools at the University. You will also be automatically involved in our specialist research areas through the dissertation component of the MA and MSc, or through your research for a PhD.

Our economics doctoral programme is a three or four year "2+2" model. The first year is a Manchester MSc or equivalent, followed by a further year of taught course units. The course is completed with two years of full-time research.

Economics at Manchester

Taught courses

- MA Economics
- MSc Economics
- MSc Economics
(Environmental Economics Pathway)
- MSc Economics (Health Economics Pathway)
- MSc Economics and Econometrics
- MSc Econometrics
- MSc Financial Economics

Detailed information on the course unit choices can be found via the on-line course information at www.socialsciences.manchester.ac.uk/study/masters/courses

Research programmes

- PhD/MRes Economics

Research areas

- Development Economics and Policy
- Econometrics and Applied Economics
- Environmental and Resource Economics
- Macroeconomics, Growth and Development
- Microeconomics and Mathematical

Funding opportunities

Internal funding opportunities may be available towards your course. For further information and advice, please contact us.

Contact:

Victoria Barnes
Postgraduate Admissions Office
The School of Social Sciences
The University of Manchester
Manchester
M13 9PL
victoria.barnes@manchester.ac.uk
+44 (0)161 275 4471/1296 – taught courses
+44 (0)161 275 4743 – research programmes

Apply online

www.manchester.ac.uk/study/postgraduate/how-to-apply/

Find out more...

For further details on all of our programmes, including entry requirements, research areas and our wide range of facilities and resources, please visit our website:
www.manchester.ac.uk/economics

Philosophy at Manchester

Manchester offers you:

- far-reaching research expertise in analytical philosophy from internationally recognised experts;
- a thriving postgraduate community;
- a wide range of MA course units in a variety of different areas of analytical philosophy.

Philosophy at Manchester offers an intellectually stimulating and supportive postgraduate environment. You'll be able to study with one of our 15 active members of research staff who offer research-led MA teaching and expert PhD research supervision.

Papers, monographs and edited collections by academic staff are regularly published in international journals and by prominent academic publishers. We also host a wide variety of seminars and conferences at which you can hear cutting-edge philosophical arguments from leaders in the field, ranging from small workshops to large international conferences.

We offer an MA in Philosophy, which includes taught courses in a wide range of analytical philosophy, and a research programme covering all fields of the subject. We provide a dedicated postgraduate study space and outstanding library resources. We also run a weekly research seminar, with papers presented by visiting speakers, staff, and PhD students, which fosters a collegial and friendly research environment among students and staff.

Philosophy at Manchester

Taught courses

- MA Philosophy

Detailed information on the course unit choices can be found via the on-line course information at www.socialsciences.manchester.ac.uk/study/masters/courses

Research programmes

- PhD in Philosophy

Research areas

- Aesthetics
- Ethics
- History of Philosophy
- Metaphysics
- Philosophy of Language
- Philosophy of Mind
- Social and Political Philosophy

Funding opportunities

Internal funding opportunities are available.

Go to:

www.socialsciences.manchester.ac.uk/subjects/philosophy/postgraduate-taught/ma-funding/

for information about MA funding, and to:

www.socialsciences.manchester.ac.uk/subjects/philosophy/postgraduate-research/phd-funding/

for information about PhD funding.

Contact:

Victoria Barnes
Postgraduate Admissions Office
The School of Social Sciences
The University of Manchester
Manchester
M13 9PL
victoria.barnes@manchester.ac.uk
+44 (0)161 275 4471/1296 – taught courses
+44 (0)161 275 4743 – research programmes

Apply online

www.manchester.ac.uk/study/postgraduate/how-to-apply/

Find out more...

For further details on all of our programmes, including entry requirements, research areas and our wide range of facilities and resources, please visit our website:
www.manchester.ac.uk/philosophy

Politics at Manchester

Manchester offers you:

- a wide range of ESRC-recognised research training master's degrees;
- the opportunity to study in an internationally renowned research environment.

Manchester has one of the largest and strongest politics groupings in the UK, with a long and distinguished history as a centre of postgraduate education, research and training. We offer a comprehensive range of master's courses, as well as opportunities at PhD level, with over 40 full-time academic staff providing expertise across all areas of politics.

At MA level, we offer a variety of courses and pathways that cater to distinct specialisations, while recognising common features of study within the discipline. You can study one distinct area or specialise in research methods. Our research training at both MA and PhD levels draws on strengths from across the School of Social Sciences and the North West Doctoral Training Centre, allowing you to specialise in research methods as well as substantive research areas.

Our postgraduates reflect a growing and diverse global community, offering unrivalled opportunities to debate aspects of your research with a substantial peer group and to begin creating international networks that will stand you in good stead throughout your career.

Politics at Manchester

Taught courses

- MA Politics
- MA Human Rights (pathways in Political Science; Law & Political Science)
- MA International Relations
- MA International Political Economy
- MA Political Economy (pathways in Theoretical Political Economy; Finance, Business & Employment; Political Economy of Development; Society, Space & Environment)
- MA Political Science (pathways in Democracy and Election, Political Theory, Ethics & Political Philosophy, European Politics & Policy, Governance & Public Policy)

Detailed information on the course unit choices can be found via the on-line course information at www.socialsciences.manchester.ac.uk/study/masters/courses

Research programmes

- PhD Politics
- PhD Applied Social Research

Research areas

- Analytical Political Theory
- Comparative Public Policy (including European Politics, Gender Politics, & Public Policy)
- Electoral Politics
- Global Political Economy and Historical Materialism
- International Politics (including East Asian Politics, Politics of War & Terrorism and Human Rights)
- Poststructuralism and Critical Thought in International Politics

Funding opportunities

Internal funding opportunities may be available towards your course. For further information and advice, please contact us.

Contact:

Victoria Barnes
Postgraduate Admissions Office
The School of Social Sciences
The University of Manchester
Manchester
M13 9PL
victoria.barnes@manchester.ac.uk
+44 (0)161 275 4471/1296 – taught courses
+44 (0)161 275 4743 – research programmes

Apply online:

www.manchester.ac.uk/study/postgraduate/how-to-apply/

Find out more...

For further details on all of our programmes, including entry requirements, research areas and our wide range of facilities and resources, please visit our website: www.manchester.ac.uk/politics

Social Anthropology at Manchester

Manchester offers you:

- the ability to gain an anthropologically informed understanding of social life in different parts of the world;
- multidisciplinary, research-driven and research-inspired teaching;
- insight into the methodological aspects of ethnographic enquiry and the political and ethical issues involved in studying people.

Social Anthropology at Manchester has been ranked first in the UK for both research capacity and impact in the recent national 2014 Research Excellence Framework (REF) exercise. You will be provided with a comprehensive grounding in classical as well as contemporary debates in social anthropology. The course will also introduce you to the distinctive research methods and ethical positions associated with the discipline.

Staff in Social Anthropology at Manchester have a reputation for addressing cutting-edge and unusual research topics, while respecting classical and long-standing interests of the discipline. You can choose from a broad range of modules offered throughout the Faculty of Humanities, and apply the anthropological theories and methods learnt on the core modules to many substantive themes and topics. You will also devise and conduct your own research which will form your dissertation.

The level of personal support offered ensures that you will attain the highest standards. You will also have the opportunity to participate in anthropological research seminars, reading groups and conferences.

The Social Anthropology department is one of the largest in Britain and has an outstanding reputation for teaching and research.

Social Anthropology at Manchester

Taught courses

- MA Social Anthropology
- MA Anthropological Research
- MA Visual Anthropology

Detailed information on the course unit choices can be found via the on-line course information at www.socialsciences.manchester.ac.uk/study/masters/courses

Research programmes

- PhD Anthropology, Media and Performance
- PhD Social Anthropology
- PhD Social Anthropology with Visual Media
- MPhil Ethnographic Documentary

PhD Anthropology, Media and Performance (run by the School of Arts, Languages and Cultures)

Funding opportunities

Internal funding opportunities may be available towards your course. For further information and advice please contact us.

Contact:

Victoria Barnes
Postgraduate Admissions Office
The School of Social Sciences
The University of Manchester
Manchester
M13 9PL
victoria.barnes@manchester.ac.uk
+44 (0)161 275 4471/1296 – taught courses
+44 (0)161 275 4743 – research programmes

Apply online

www.manchester.ac.uk/study/postgraduate/how-to-apply/

Find out more...

For further details on all of our programmes, including entry requirements, research areas and our wide range of facilities and resources, please visit our website:
www.manchester.ac.uk/social-anthropology

Sociology at Manchester

Manchester offers you:

- a high-ranking Sociology department for research;
- full-time and part-time study options on every postgraduate programme.

Sociology at Manchester is one of the UK's largest and most prestigious centres for the subject, with over 30 academic staff and 60 postgraduate students forming a diverse and rigorous academic community.

Our research and teaching includes all areas of contemporary sociology, but we have particular expertise in the fields of socio-cultural change, gender and sexuality, and consumption and sustainability.

Sociology is the perfect course to develop your analytical and investigative skills, training you in methods of social investigation in order to equip you with the ability for independent thinking, research and analysis.

We are consistently highly ranked for research, coming first in the UK for the percentage of our research outputs that are judged as 'world-leading', and second nationally based on our research power in the 2014 Research Excellence Framework (REF). Our research feeds into our undergraduate and postgraduate teaching.

Sociology at Manchester

Taught courses

- MA Sociology
- MSc Sociological Research

Detailed information on the course unit choices can be found via the on-line course information at www.socialsciences.manchester.ac.uk/study/masters/courses

Research programmes

- PhD Sociology
- PhD Applied Social Research

Funding opportunities

Internal funding opportunities may be available towards your course. For further information and advice, please contact us.

Contact:

Victoria Barnes
Postgraduate Admissions Office
The School of Social Sciences
The University of Manchester
Manchester
M13 9PL
victoria.barnes@manchester.ac.uk
+44 (0)161 275 4471/1296 – taught courses
+44 (0)161 275 4743 – research programmes

Apply online

www.manchester.ac.uk/study/postgraduate/how-to-apply/

Find out more...

For further details on all of our programmes, including entry requirements, topics to study and our wide range of facilities and resources, please visit our website:
www.manchester.ac.uk/sociology

Postgraduate loans (PGL) for taught and research master's students

Applications are now open for the new postgraduate loan. Postgraduate loans (PGL) will be available to eligible applicants starting taught and research master's courses. If you're thinking of coming to Manchester to begin your postgraduate study, you could qualify for a loan of up to £10,000 from the UK government.

This postgraduate student loan is:

- a contribution towards the cost of study to be used towards tuition fees, maintenance costs or other costs;
- non-means tested;
- paid directly into a student's UK bank account.

Postgraduate loans (PGL) for taught and research master's students

UK postgraduate students

- The PGL is available to UK students who have been ordinarily resident in the UK for the three years prior to the first day of the first academic year of the course.
- Students must most recently have been resident in England.
- UK applicants from Northern Ireland, Wales, Scotland, Channel Islands or the Isle of Man who move to England solely for the purpose of attending the course will not be eligible.

EU postgraduate students

- The PGL is available to non-UK EU students who have been ordinarily resident in the EEA/Switzerland for the past three years but do not meet the requirements to be assessed as English-domiciled students.
- Students must be attending a course in England or undertake a distance-learning course from a higher-education provider in England or attend a campus in England that is part of a higher-education provider in the UK.
- The loan may also be available to students who have residency status of refugee, humanitarian protection, EEA migrant worker, child of a Swiss national or child of a Turkish worker.

Additional criteria

- Students must be aged 60 or under on the first day of the first academic year of the course.
- Applicants will not be eligible if they have outstanding arrears on any Higher Education / Further Education Loan balance.

Applications for the PGL are now live. You can apply online on the UK Government website

<https://www.gov.uk/postgraduate-loan>

Contact:

Victoria Barnes
Postgraduate Admissions Office
The School of Social Sciences
The University of Manchester
Manchester
M13 9PL
victoria.barnes@manchester.ac.uk
+44 (0)161 275 4471/1296 – taught courses
+44 (0)161 275 4743 – research programmes

Apply online

www.manchester.ac.uk/study/postgraduate/how-to-apply/

Find out more...

For further details on all of our programmes, including entry requirements, research areas and our wide range of facilities and resources, please visit our website:
www.manchester.ac.uk/social-anthropology