

MANCHESTER
1824

The University of Manchester

Postgraduate Guide

School of Law

Postgraduate Studies 2016

Welcome

By choosing a postgraduate degree at the School of Law, you will be joining a community of internationally-recognised scholars who are tackling some of the most complex problems facing society.

Our degrees are based on real-world needs and bring current legal, social and ethical issues into classroom teaching and discussions. Our academic leaders make an impact on law, policy and justice through evidence-based research.

We advise Parliamentary committees and Government departments in diverse areas, including cyber security, drugs, violence against women, corporate governance and health. We work closely with employers from a broad range of sectors to equip you with the relevant skills to pursue a range of professions, within the field of law and beyond.

We have an international perspective and our links with overseas organisations allow you to encounter the impact of our specialisms around the world.

We look forward to welcoming you to Manchester.



Professor Toby Seddon,
Head of School



Accommodation

We offer a huge choice of accommodation in University halls of residence. We'll do everything we can to help you find somewhere to live where you'll feel at home.

There are a wide range of options available to students including:

- Postgraduate-only accommodation
- Single or mixed gender accommodation
- Catered or self-catering facilities
- Shared or en-suite facilities
- Specially adapted rooms for students with disabilities
- Accommodation for families and partners

Contact our Accommodation Office:

+44 (0)161 275 2888

accommodation@manchester.ac.uk

www.manchester.ac.uk/accommodation

Contact Manchester Student Homes:

+44 (0)161 275 7680

manchesterstudenthomes@manchester.ac.uk

www.manchesterstudenthomes.com

Manchester also has plenty of private accommodation available for rent – contact Manchester Student Homes for further information. Jointly owned by the Manchester universities, this is the city's only housing bureau that advertises university-approved accommodation.

Accommodation in Manchester is relatively inexpensive and is never far from a regular bus service to the main University campus.



Fees and funding

Your fees will cover the cost of your study at the University, as well as charges for registration, tuition, supervision, examinations and graduation (excluding graduation robe hire). Fees vary for each postgraduate course.

Payment of tuition fees will also entitle you to membership of The University of Manchester Library, the Students' Union and the Athletic Union.

The fee for each course or programme can be found on the course information pages – please see:

www.law.manchester.ac.uk/pgt

www.law.manchester.ac.uk/pgr

Funding

Students may also be entitled to a University bursary or scholarship to support you through your studies. There are numerous different bursaries available; please see our funding pages at: www.law.manchester.ac.uk/fees/postgraduate-taught/ www.law.manchester.ac.uk/fees/postgraduate-research/

Alternatively please contact us for further information and eligibility criteria.

Contact

Postgraduate Admissions Office
The School of Law

Taught courses

pg-law@manchester.ac.uk

Tel: +44 (0)161 306 1270

Fax: +44 (0) 161 275 4724

Research programmes

research-law@manchester.ac.uk

Tel: +44 (0) 161 306 1279

Fax: +44 (0) 161 275 4724



Postgraduate study

Like many prospective postgraduate students, you probably already have a clear idea of what you want to study and the themes you are interested in.

Set in the second largest legal hub in the UK, the School of Law offers you a superb option for continuing your education. We offer innovative training, supervision and facilities, alongside dedicated forums for research exchange. You will pursue intellectually challenging projects within a nurturing and vibrant environment.

As well as the intensive programme of career-related activities we run at the University, you can also get involved in mentoring opportunities, pioneer your own group and series of events, or start your own initiative.

You will be part of a diverse, interdisciplinary postgraduate community that reaches far beyond the University.

The School of Law:

- works in partnership with institutions outside the higher education sector to enable our postgraduates to produce research with a wider relevance and to develop their knowledge and expertise;
- is dedicated to shaping policy-making and practice in diverse areas, from national healthcare guidelines, to influencing police procedures in countries such as Norway, Australia and Brazil.

Our taught postgraduate courses include classes run by Manchester academics and a programme of assessed work. These are particularly suitable if you want to gain specialised knowledge in your chosen subject area. You may continue your studies in order to pursue an academic career, or go on to specialise in your chosen legal field.

As a postgraduate researcher at Manchester, you will undertake independent research under the supervision of a senior academic, contributing to the body of professional knowledge in your specialist area. Our dedicated researchers are among those tackling some of the most challenging issues facing societies in the twenty-first century.



Postgraduate taught courses

Corporate Governance LLM 12 months full-time

The LLM Corporate Governance is taught by Manchester's corporate governance and corporate social responsibility experts, and will provide you with specialist knowledge about the law of conducting business in today's global society.

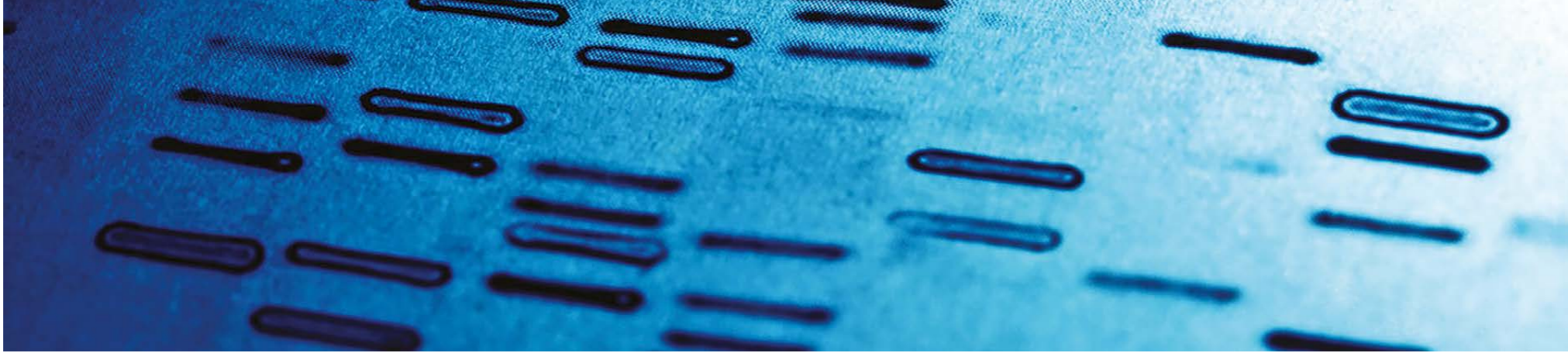
This course examines the major theories concerning the nature of corporations, and the concerns driving corporate governance law and practice, and reform proposals. You will evaluate the effectiveness of current corporation governance processes in setting and pursuing objectives, both nationally and internationally. In addition, you will develop your skills by examining the evidence for European and global convergence of corporate governance practices and the ways in which this might evolve.

Criminology MA 12 months full-time 27 months part-time

The MA Criminology allows you to develop specialist knowledge of the current trends and historical debates surrounding crime causation, crime control and regulation. The course equips you with the intellectual, critical and analytic skills needed for understanding and applying criminological theories and concepts in practice. In addition, the course provides an in-depth understanding of the interactions between politics, criminology and criminal justice, and the impact of public policy in these areas.

This innovative course is taught by experts from sociological, legal and psychological backgrounds with real-world experience. You will benefit from research-led teaching as well as strong links to wider criminal justice professions and industry.





Criminology MRes

12 months full-time
27 months part-time

The MRes Criminology will provide you with the advanced theoretical, conceptual and methodological expertise and skills necessary to undertake and evaluate criminological, socio-legal and criminal justice research.

Combining core research skills with specialist criminology and criminal justice teaching from research-active staff, this course will encourage you to critically examine the theoretical foundations that underpin applied criminological research. Furthermore, the course provides formal, comprehensive, multi-disciplinary training in research methodologies and transferable employment related skills, for those interested applying for a PhD and/or planning a professional research career in the voluntary, public or private sectors.

The MRes is an Economic and Social Research Council (ESRC) and North West Doctoral Training Centre (NWDTC) recognised foundation course for research training. This is an essential first step if you wish to undertake doctoral research.

Criminology PGDip

9 months full-time
24 months part-time

The Postgraduate Diploma in Criminology allows you to develop specialist knowledge of the current trends and historical debates surrounding crime causation, crime control and regulation. The course equips you with the intellectual, critical and analytic skills needed for understanding and applying criminological theories and concepts in practice. Furthermore, the programme provides an in-depth understanding of the interactions between politics, criminology and criminal justice, and the impact of public policy in these areas.

This innovative course is taught by experts from sociological, legal and psychological backgrounds with real-world experience. You will benefit from research-led teaching as well as strong links to wider criminal justice professions and industry.

You will gain all the specialist knowledge of the full MA, but will not be required to produce a dissertation.

Healthcare Ethics and Law LLM

12 months full-time
24 or 27 months part-time
24 or 27 months by distance learning

The LLM Healthcare Ethics and Law provides high-quality training in healthcare ethics and healthcare law. There is an emphasis on the application of bioethical and legal theory to real-world scenarios, thus catering to the practical needs of healthcare and legal professionals and those in related fields. This course is predominantly law based, and you are required to take optional law elements.

Healthcare Ethics and Law MA

12 months full-time
24 or 27 months part-time
24 or 27 months by distance learning

The MA Healthcare Ethics and Law will provide you with expert knowledge and understanding of ethical and medico-legal theories, and the skills needed to apply them to real-world scenarios in a diverse range of contexts.

You will study a wide variety of ethical and legal subjects including autonomy, consent, refusal of treatment, confidentiality, the moral status of the foetus, resource allocation, genetic testing, HIV testing, medical malpractice, clinical negligence, organ and tissue transplantation, fertility treatment, genetic manipulation, research ethics, stem cell research and euthanasia.

Healthcare Ethics and Law MSc (Intercalated)

12 months full-time

At Manchester we provide the highest quality of training in healthcare ethics and healthcare law, for intercalating medical students. This course compliments your medical degree, giving you the opportunity to study the in-depth moral and legal issues that you will face as a medic or researcher. Whilst identifying the ethical and legally problematic aspects of practice, you will learn to suggest ways to minimise and formulate solutions in challenging circumstances.

On completion of the course, you will have a comprehensive understanding of the mechanics of medical ethics and medical law and a full conceptual toolkit that can be applied to both disciplines.

Healthcare Ethics PGCert

9 months full-time
18 months part-time by distance learning

The Postgraduate Certificate in Healthcare Ethics allows you to gain knowledge and understanding of ethical and medico-legal theories without the need to complete a full master's course.

There is an emphasis on the application of bioethical and legal theory which caters to the practical needs of healthcare and legal professionals and those in related fields. You will follow the structure of the taught component of the MA and LLM, but will not be required to write a dissertation.



Healthcare Law PGCert

9 months full-time
15 months part-time by distance learning

This course allows you the opportunity to gain a comprehensive knowledge and firm understanding medico-legal theories without completing a full master's course. Students specialise in either healthcare ethics or healthcare law and will benefit from being taught alongside students studying the LLM, MA and PGDip.

Intellectual Property Law LLM

12 months full-time

The LLM Intellectual Property (IP) Law will give you a thorough understanding of the law concerning intellectual property and patents in modern business.

Our IP experts will take you through the economic, social and philosophical aspects of IP law development and encourage you to critically analyse the current legal framework. You will gain advanced knowledge in IP law and concomitant policy, learn about national and international grant enforcement and defence of intellectual property rights on a multi-jurisdictional basis.

International Business and Commercial Law LLM

12 months full-time

The LLM International Business and Commercial Law offers you the opportunity to develop an advanced understanding of the law governing commerce and finance in today's international market.

Multinational companies must regularly overcome a wide range of legal and governance issues in order to do business worldwide. This course will encourage you to explore the legal challenges faced by international business and analyse the fundamental legal framework for dealing with them. You will study areas such as corporate governance, international trade transactions and competition law.

International Financial Law LLM

12 months full-time

The LLM International Financial Law offers you an opportunity to gain specialist knowledge in one of the most high-profile areas of legal practice today.

This course will introduce you to the major regulatory and contractual issues in international financial and banking law. You will be encouraged to examine the financial practices of developed and developing countries and how these relate to broader business law issues across the world.

International Trade Transaction LLM

12 months full-time

The LLM International Trade Transaction offers you an opportunity to gain specialist expertise in an important area of law. Whilst specialist, it has a considerable number of practitioners all around the world and it is growing as a result of globalisation. Developing countries need more lawyers educated in this area, as their development involves deepening involvement in the international trade process and the legal structures which underpin it.

This course provides you with the core knowledge and understanding of the background to international trade, the transactional conditions conducive to its development and the specific and general problems which threaten the success and integrity of individual transactions.



Titilope O. Babafunso

International Financial Law LLM

Having worked in the financial services industry in Nigeria, I wanted to broaden my knowledge in financial services regulation. Manchester is one of the few universities that offer the LLM International Financial Law as an independent course, dealing with the trends in the international financial law and financial services regulation.

I love the teaching technique, which combines lectures with seminars, for a more rounded experience. I particularly love the enthusiasm of the lecturers, which is quite contagious, as well as their preparedness to assist students.

Law LLM

12 months full-time

The LLM Law offers you a solid grounding in the fundamental principles of law, combined with the flexibility to explore your own interests with support from research-active teaching staff.

Manchester's unique combination of legal, criminological and ethical specialists collaborating within the School of Law means you will benefit from an impressive range of optional subjects and opportunities, enabling you to explore your own interests while studying with us.



Public International Law LLM

12 months full-time
27 months part-time

The LLM Public International Law allows you to develop recognised expertise in the main areas of international law. This master's course draws on Manchester's established reputation in international legal research to offer you a wide range of optional subjects, as well as the opportunity to customise your curriculum according to your career ambitions, needs and areas of interest.

Security and International Law LLM

12 months full-time
27 months part-time

The LLM Security and International Law allows you to develop advanced knowledge on the regulatory frameworks necessary to secure international relations and transactions between states, non-state entities, multinational companies, as well as individuals.

The course is premised on the idea that regulating security at an international level requires not only the regulation of the use of force and methods of warfare, but also that of international investments, international financial transactions and intellectual property. This holistic approach of the concept of security is at the heart of this course and offers a unique opportunity for you to gain expertise which is relevant and applicable in today's changing global landscape.



Syeda Shabab Z. Rizvi

Public International Law LLM

The quality of teaching at Manchester is impressive. The staff are very open, involved, and crucially, experts in the fields that they teach. This reassurance is indispensable; it allows new students the opportunity to pursue their interests, knowing that they have support for their needs. The teaching environment encourages motivated students to excel and build strong foundations for their future careers.

I would advise students to make the most of the staff and facilities at The University of Manchester, as master's courses are intensive and move at a fast pace. Overall, the experience is enormously worthwhile, and I would definitely recommend this course.

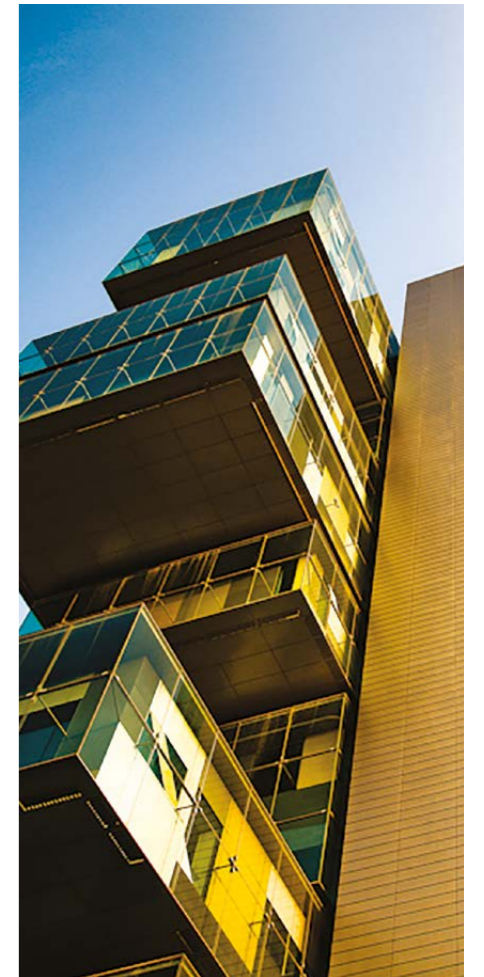


Ibrahim Olabi

Security and International Law LLM

Studying in Manchester enabled me to start my own organisation which promotes the rule of law and human rights.

This start-up is now operating in three countries, working with the UN, collaborating with universities and, most importantly, making a difference. I plan to continue working in the field of international law and policy once I complete my master's degree.



Security and International Law MA

12 months full-time
27 months part-time

The MA Security and International Law offers the benefits of a specialised master's without the requirement of an undergraduate law degree.

You will gain advanced knowledge in the main areas of international security and the UN system, and the tools necessary to understand the issues surrounding armed conflicts, terrorism, modern warfare, and the security of international transactions and intellectual property.

Transnational Dispute Resolution LLM

12 months full-time
27 months part-time

The LLM Transnational Dispute Resolution allows you to develop advanced knowledge of the rules and procedures along with how international and transnational disputes are settled.

The course focuses on the contemporary rules, procedures and practices of international courts and tribunals. This includes the International Court of Justice, interstate and mixed arbitration tribunals, as well as investment dispute resolution mechanisms such as the International Centre for Settlement of Investment Disputes (ICSID), or World Trade Organisation (WTO).

It also deals with mechanisms allowing the settlement of disputes which are of a hybrid nature, partly international and partly domestic.

For more information about taught courses visit:
www.law.manchester.ac.uk/pgt



Research

In 2012/13, we attracted more than £280 million in external research funding, and the University was ranked in fifth place nationally in terms of research power according to the UK's 2014 Research Excellence Framework (REF2014).

At Manchester you will benefit greatly from our continued investment in the best research facilities, as well as a dynamic research culture that encourages innovative, cross-disciplinary collaboration. Our courses and programmes are led by distinguished tutors and fellow researchers working at the forefront of their disciplines, ensuring that your qualification comes with a reputation that will open doors across the world.

Close partnerships with organisations from many different sectors inform our research activity and postgraduate research programmes, providing exceptional opportunities for research with commercial applications, as well as the chance to develop business and entrepreneurial skills relevant to your future career.



Research programmes

Research is central to the work of the School of Law. Our diverse intellectual community brings together legal doctrinal scholars with criminologists, ethicists, sociologists, socio-legal scholars, producing a wide range of scholarly and policy-oriented publications.

Through our active engagement and knowledge exchange with policy-makers, legislators, NGOs and activists working in a diverse range of fields and sectors, our research shapes law, policy, and social change. We invite you to explore our research themes, through which we encourage collaboration and debate within the School and beyond.

Our research degrees involve sustained, in-depth study into a specific topic, which is then written up as a thesis for examination. We offer a PhD by publication in Bioethics and Medical Jurisprudence, which allows you to benefit from taught classes, peer support and the opportunity to build your portfolio of publications while you study, as well as traditional research PhD programmes in Law and in Criminology.

Undertaking a PhD is challenging, but you will receive expert supervision during your time with us. This includes regular meetings with your supervisors and an annual review meeting for you to present details of your progress to other academic staff. Supervisors will normally be allocated from within the School, but creating supervisory teams with scholars from other areas of the University is also possible.

Our dedicated researcher development team provides individual tailored training, to support the development of your research skills, as well as guidance for your career in academia or further afield. To test your ideas and disseminate your scholarship, the School actively supports and encourages you to engage with the wider academic community.

Funds are available to support research and travel, many of our students present papers at international conferences. You are also encouraged to publish your work.

For more information about taught courses visit:
www.law.manchester.ac.uk/pgr

Bioethics and Medical Jurisprudence PhD

3 years full-time
6 years part-time

Criminology PhD

3 years full-time

Law PhD

3 years full-time



Sacha Waxman Bioethics and Medical Jurisprudence PhD

I completed an MA at Manchester in 2005, and not only loved the course, but the School, the staff and the environment on campus. After practising law for several years I decided to return to postgraduate research and returning to Manchester was naturally the first choice.

The balance here is perfect. The academic and admissions staff in the School are always available if you need help. Academics also encourage you to work on your own and pursue your research interests. The feeling of community is very strong and the support network creates the perfect environment for academic study.



Katie Benson Criminology PhD

Prior to starting my PhD, I completed the MRes Criminology at Manchester. The School of Law offered a great environment in which to carry out criminological research, with research expertise in my area of interest and experienced friendly staff supporting me.

The programme allowed me to mix with people carrying out legal, as well as criminological research. In addition, Manchester is part of the North West Doctoral Training Centre, alongside Liverpool and Lancaster Universities, which provides students with a wider research network, together with training opportunities and events.



Cara Banerji-Parker Law PhD

I was drawn to the School of Law because of the great opportunities for research students to teach. I love the city, and after a few years away studying in Leeds and London, I was keen to return.

My research focuses on conceptions of land, the way they interact with the concepts of property and sovereignty in international law. While studying for my LLM, I became interested in the relationship between international law and land, and specifically the contradictions and incoherence in international law's approach to land.

Each week there are interesting seminars and talks in all areas of law. The highlights for me have been Manchester International Law Centre's lecture series and talks from Shami Chakrabarti, director of human rights organisation Liberty and Honorary Professor of Law.

Applying to Manchester

Submitting an application to study at
The University of Manchester couldn't be simpler...

Please go to the links below to apply online for our taught and research postgraduate degrees:
www.manchester.ac.uk/study/masters/admissions/apply

www.manchester.ac.uk/study/postgraduate-research/admissions/how-to-apply

International students

We also have educational consultants in some overseas countries who can assist you with preparing and submitting your application.

Visit your country page on our website to find out more:
www.manchester.ac.uk/international/country

We also recognise many different qualifications from around the world. For details of international entry requirements and equivalencies please visit: www.manchester.ac.uk/international/country

English language requirements

An ability to communicate effectively in English is vital to your academic performance and progress at Manchester. Improving your English is also a valuable long-term skill that will enhance your job prospects.

For further information on the application process, language testing, eligibility and support, please see the course information pages at:
www.law.manchester.ac.uk/pgt
www.law.manchester.ac.uk/pgr



Contact us

For further information please contact:

Postgraduate Admissions Office
The School of Law
Williamson Building
The University of Manchester
Manchester
M13 9PL

Taught courses

+44 (0)161 306 1270
pg-law@manchester.ac.uk

Research programmes

Tel: +44 (0) 161 306 1279
research-law@manchester.ac.uk