

PLUREL



Joe Ravetz,
University of Manchester

METRO-LAND - Researching the peri-urban



Manchester, 2nd October 2008



Outline

“METRO-LAND” – THEMES

- Scenarios – back to the future
- Agendas – conflict and evolution
- Actions >>>>>>

Outline

“METRO-LAND” – THEMES

- Scenarios – back to the future
- Agendas – conflict and evolution
- Actions >>>>>>

“PLUREL” – THE PROJECT

- What are we trying to do?
- How does it work?
- What will be the results?



MVRDV/Hannover 2000









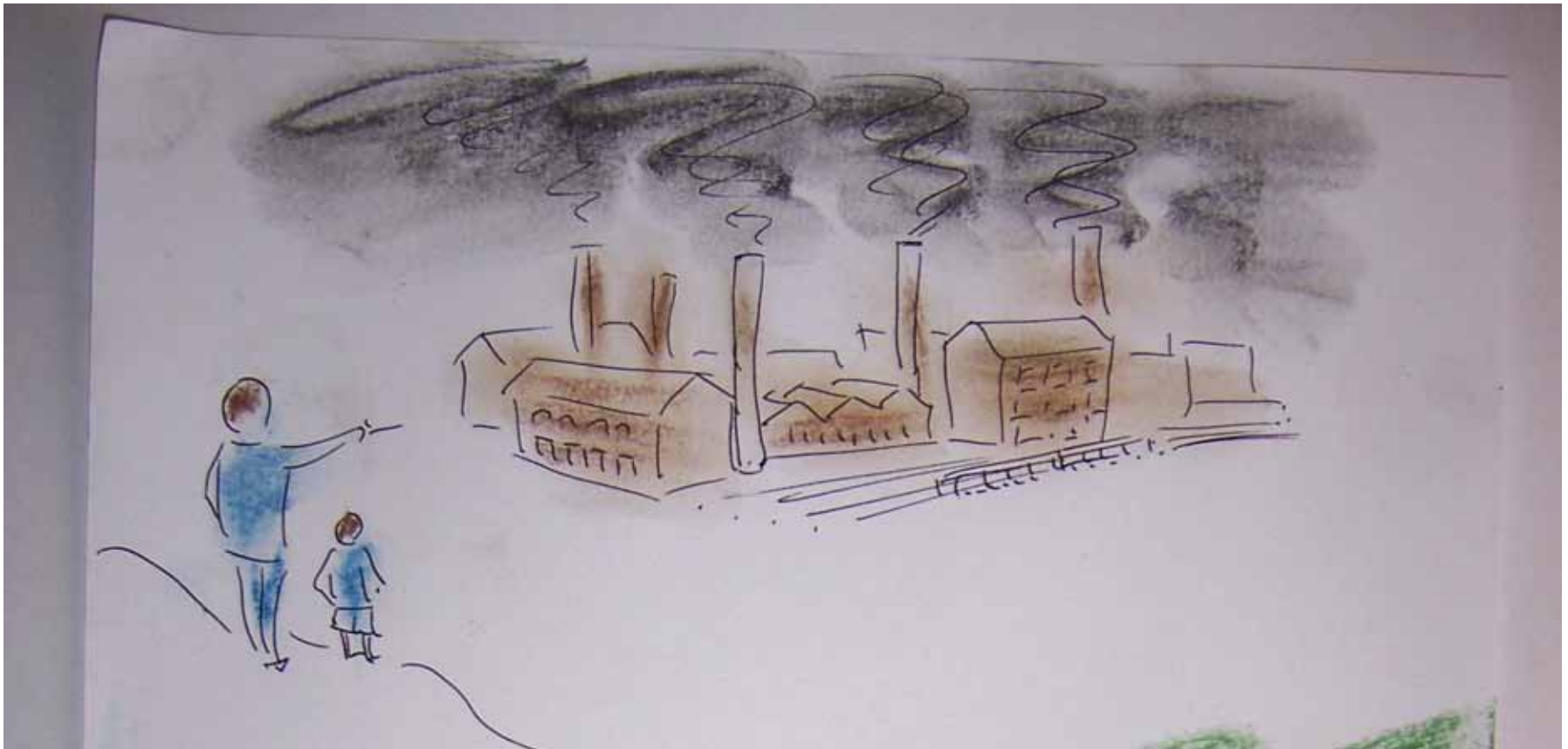


THEMES

-

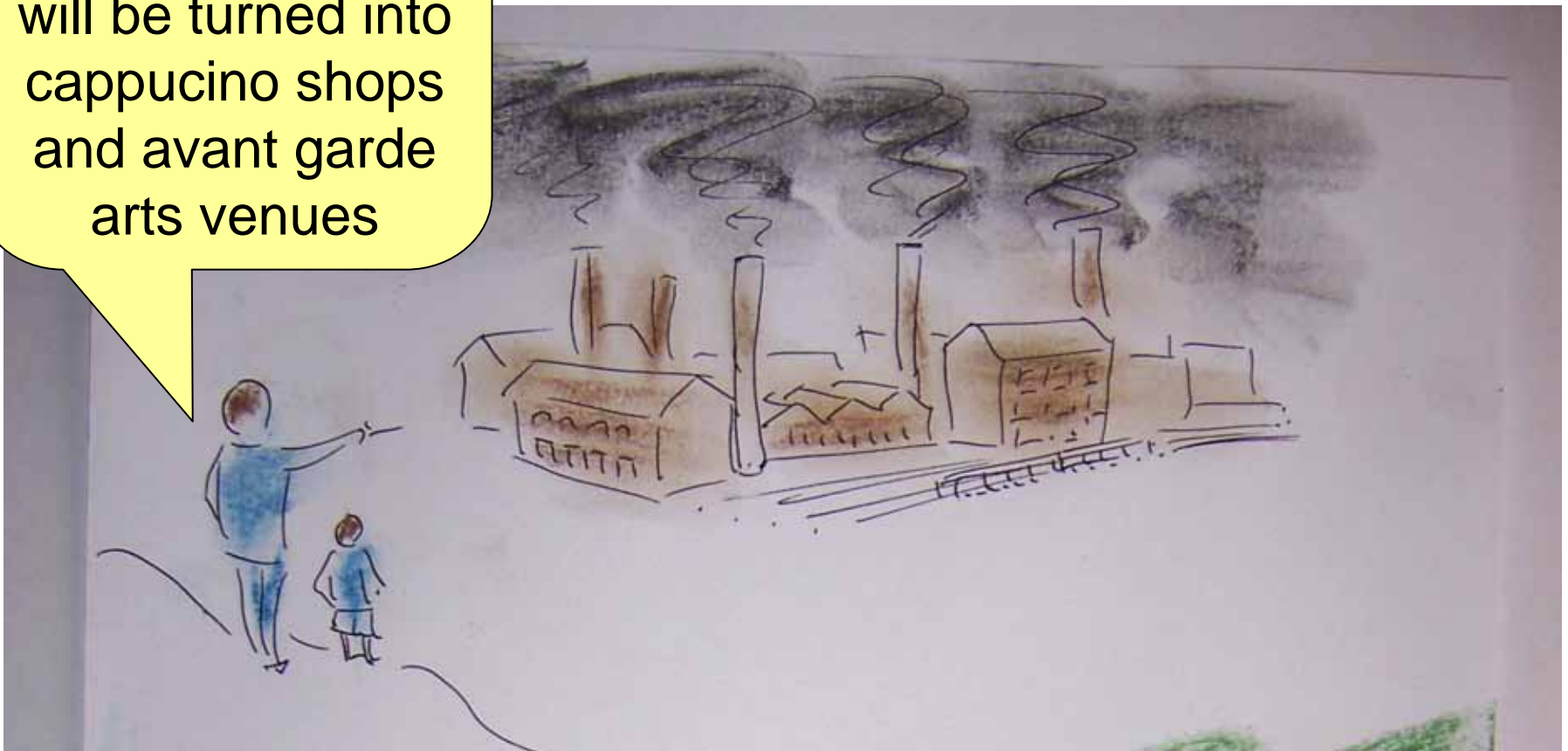
MANCHESTER – (SO FAR)

Post-industrial evolution



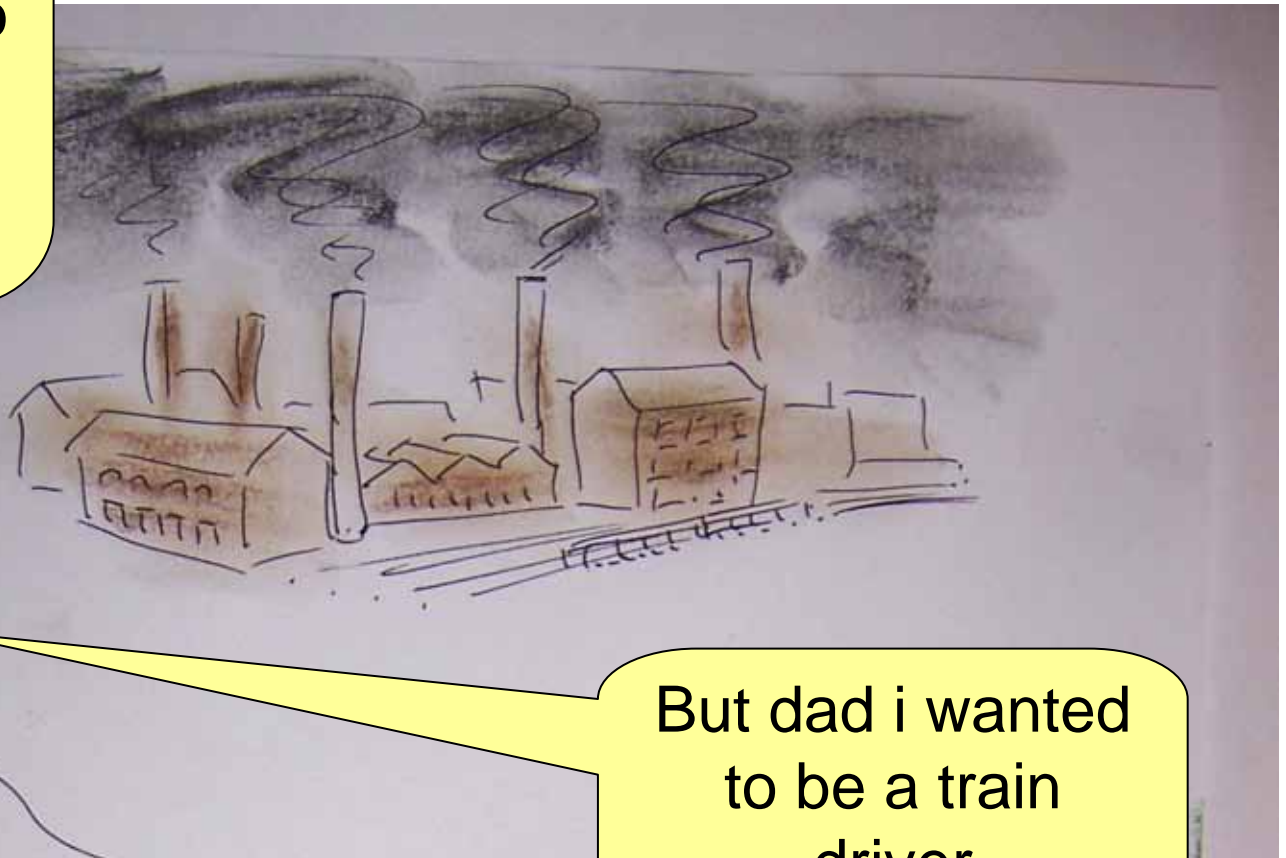
Post-industrial evolution

One day my son,
these all factories
will be turned into
cappucino shops
and avant garde
arts venues



Post-industrial evolution

One day my son,
these all factories
will be turned into
cappucino shops
and avant garde
arts venues



But dad i wanted
to be a train
driver

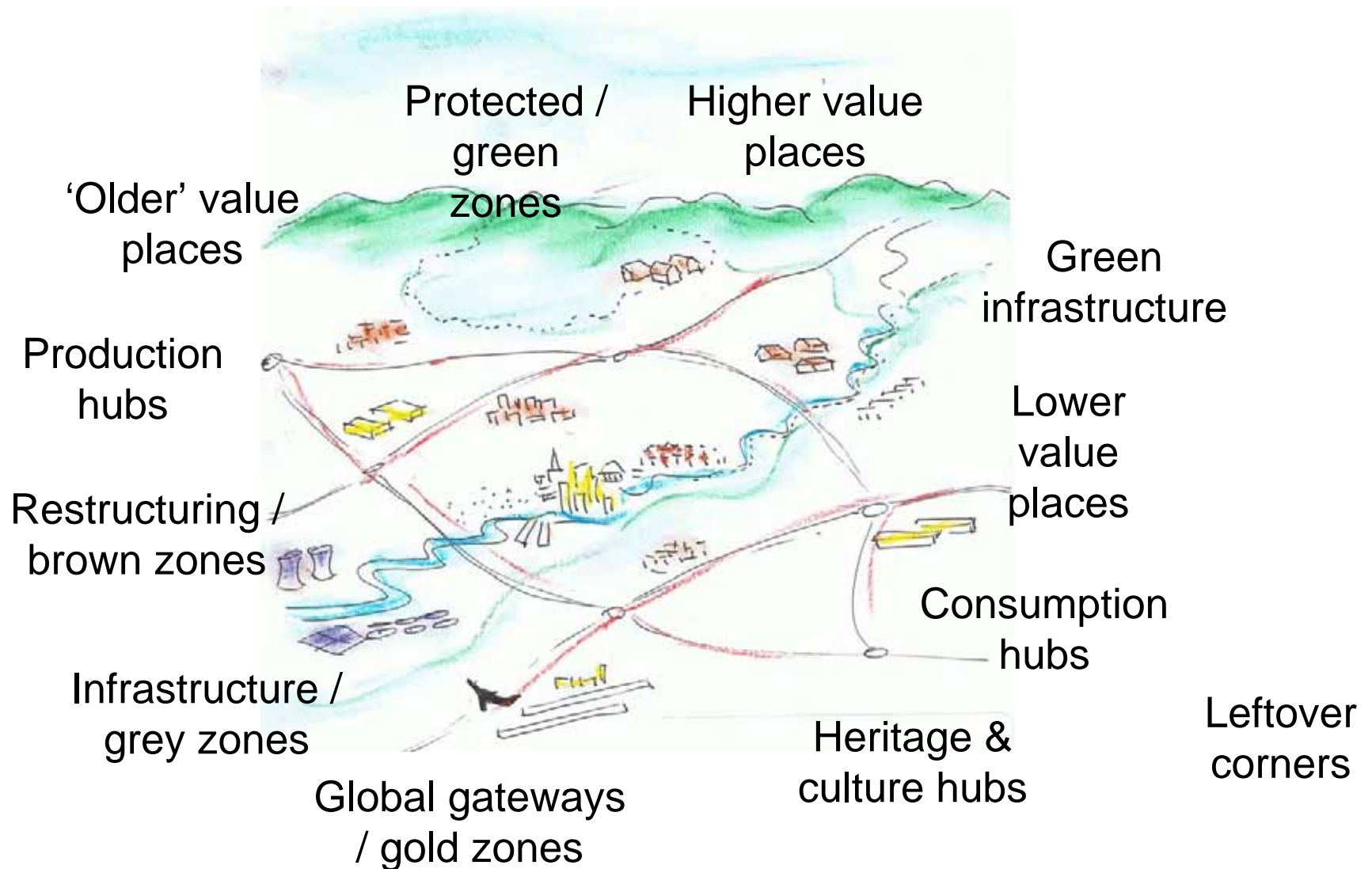
From the ashes, the sound



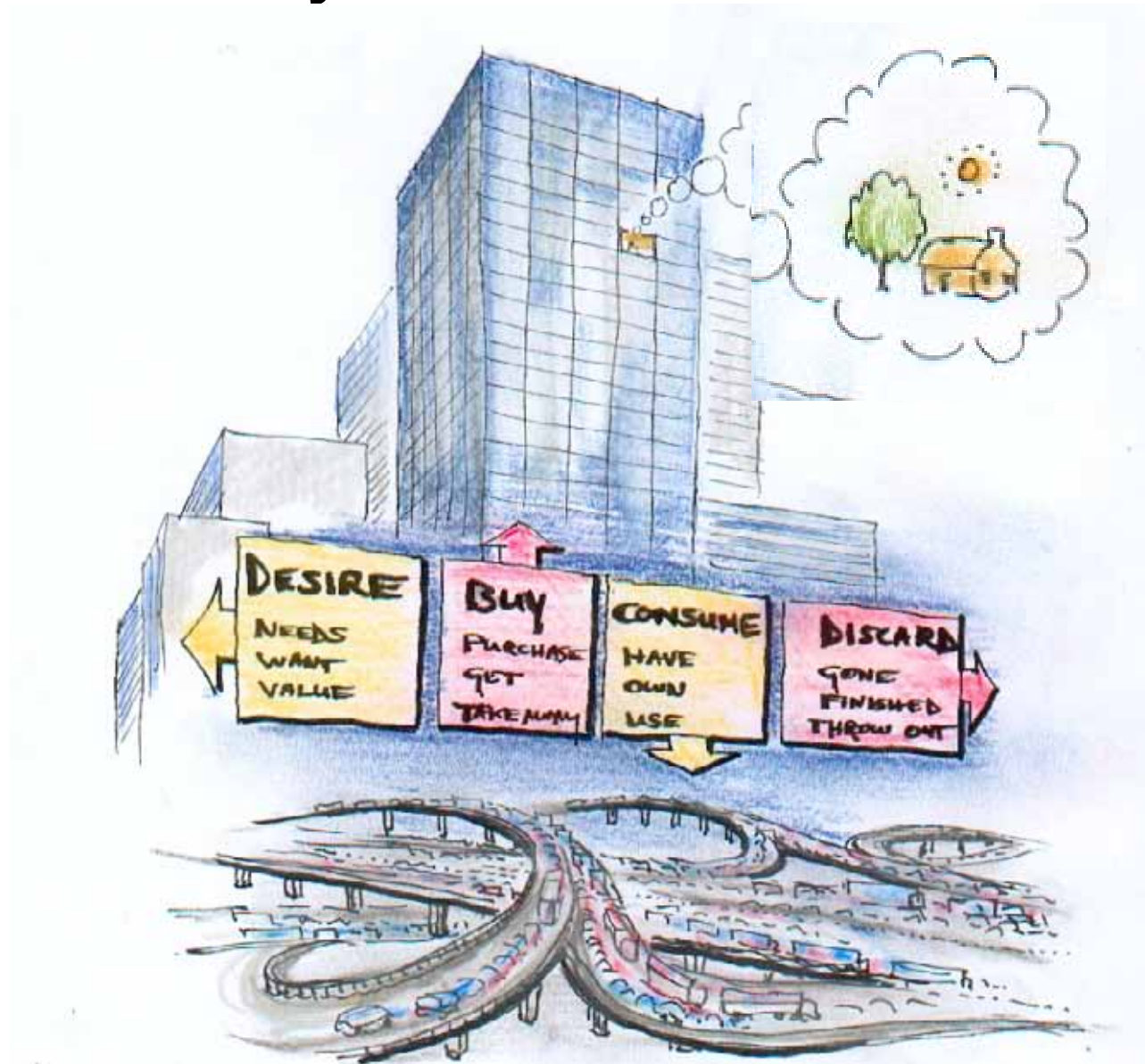
Creative city ???



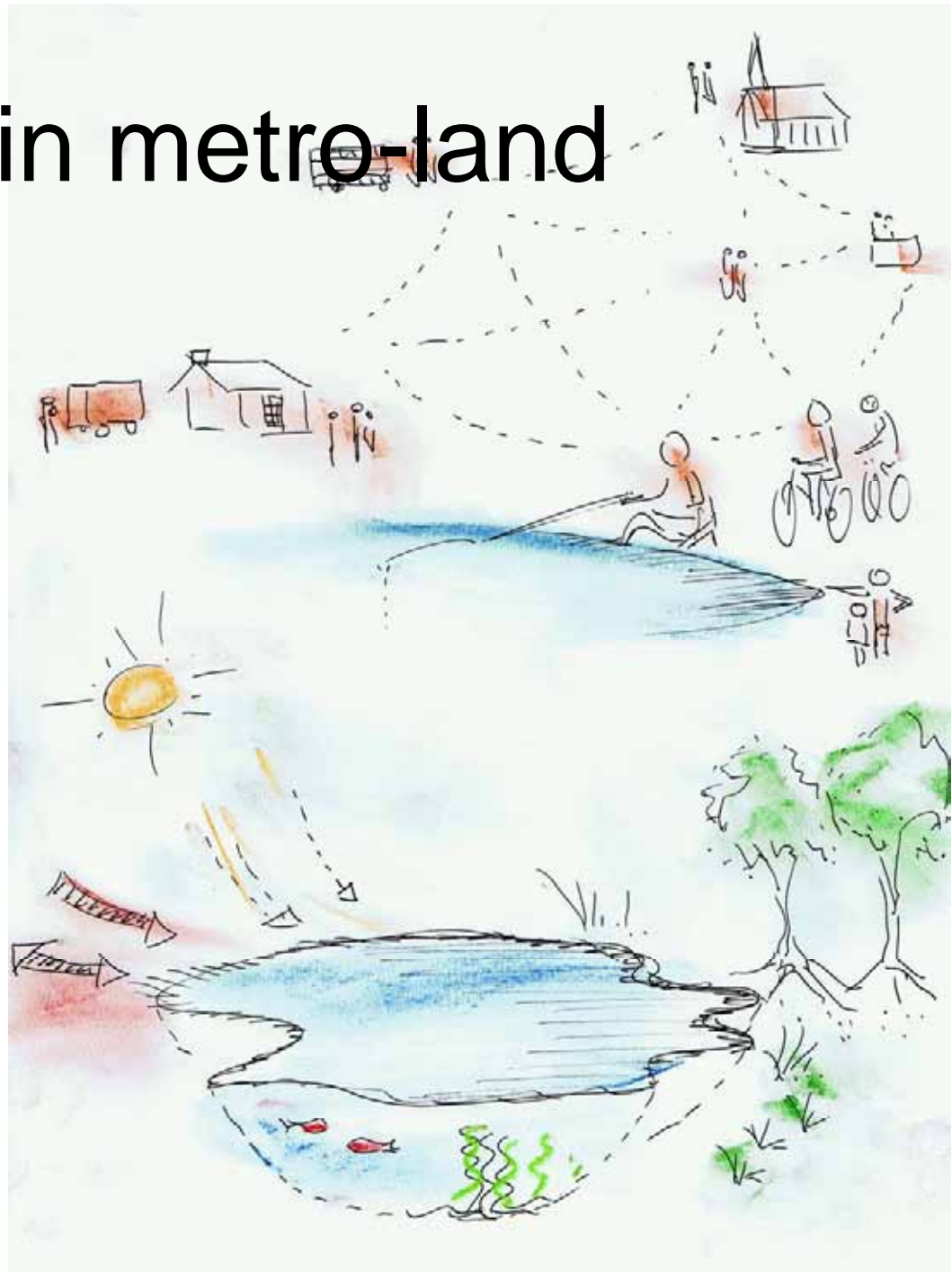
City of flows



Anywhere but here



Life in metro-land



Nobody tells us
what's going on,
we just sell the
hot dogs



There's just no
unspoilt
wilderness left
these days

Nobody tells us
what's going on,
we just sell the
hot dogs

Sorry the nature
reserve will have
to move... We
need a new link
road

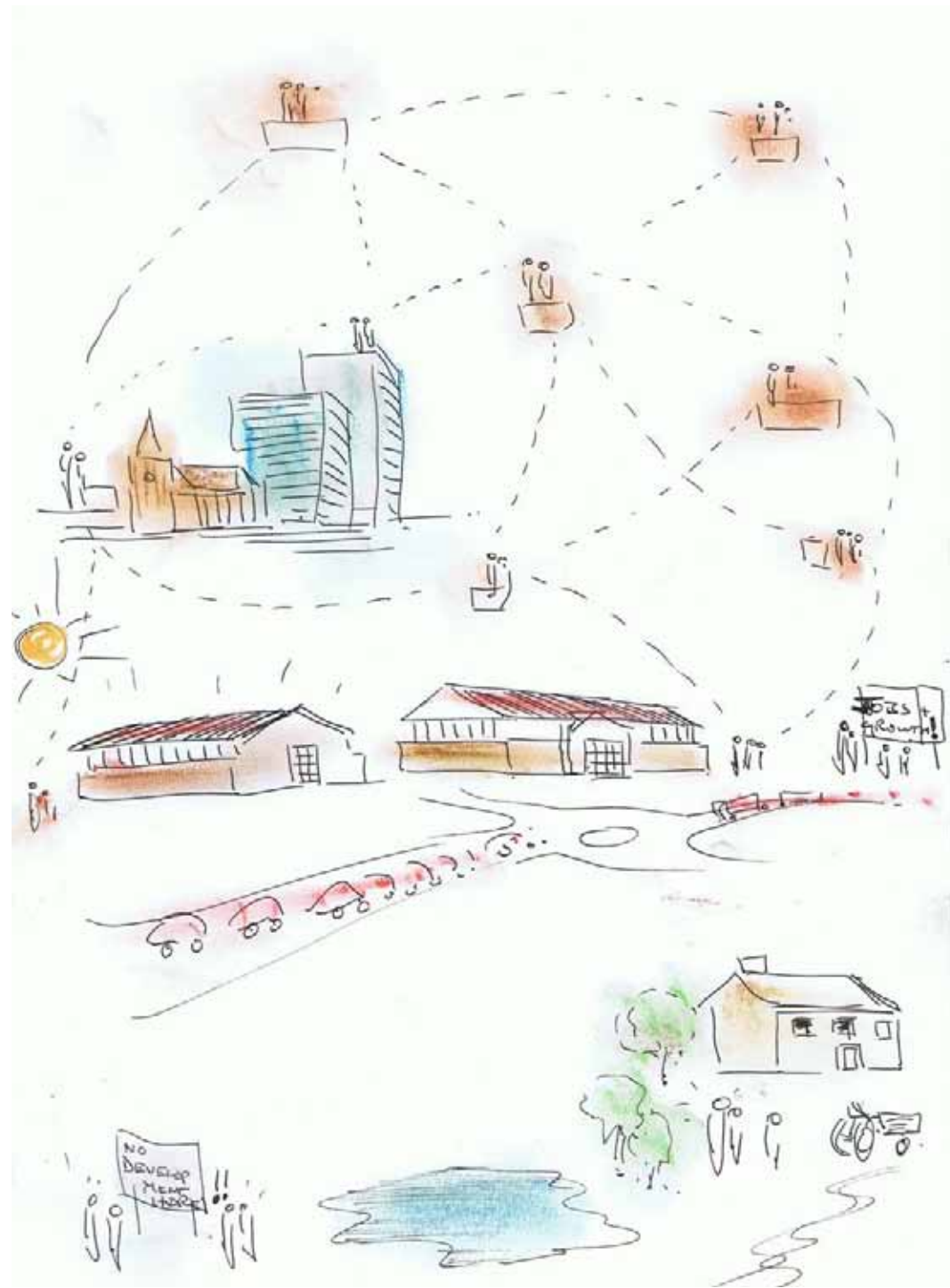
Who's looking
after this pond
anyway, it's a real
mess

There's just no
unspoilt
wilderness left
these days



New life in metro-land



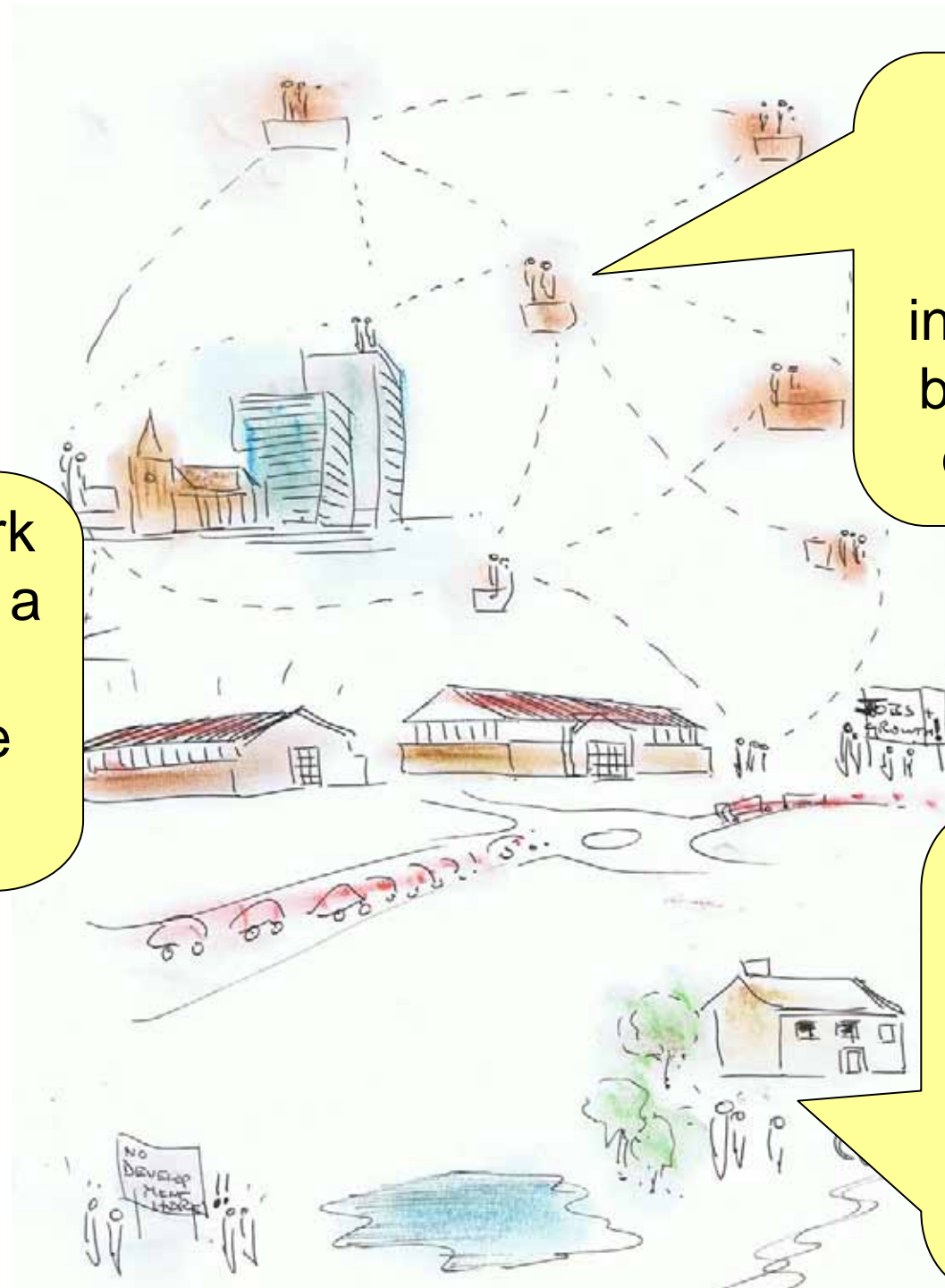


This science park
has got to be on a
world league
otherwise we're
out of here



We've
farmed here
for 400
years and
nobody
gives a stuff

This science park
has got to be on a
world league
otherwise we're
out of here



They talk
about
university-
industry links
but they just
don't get it

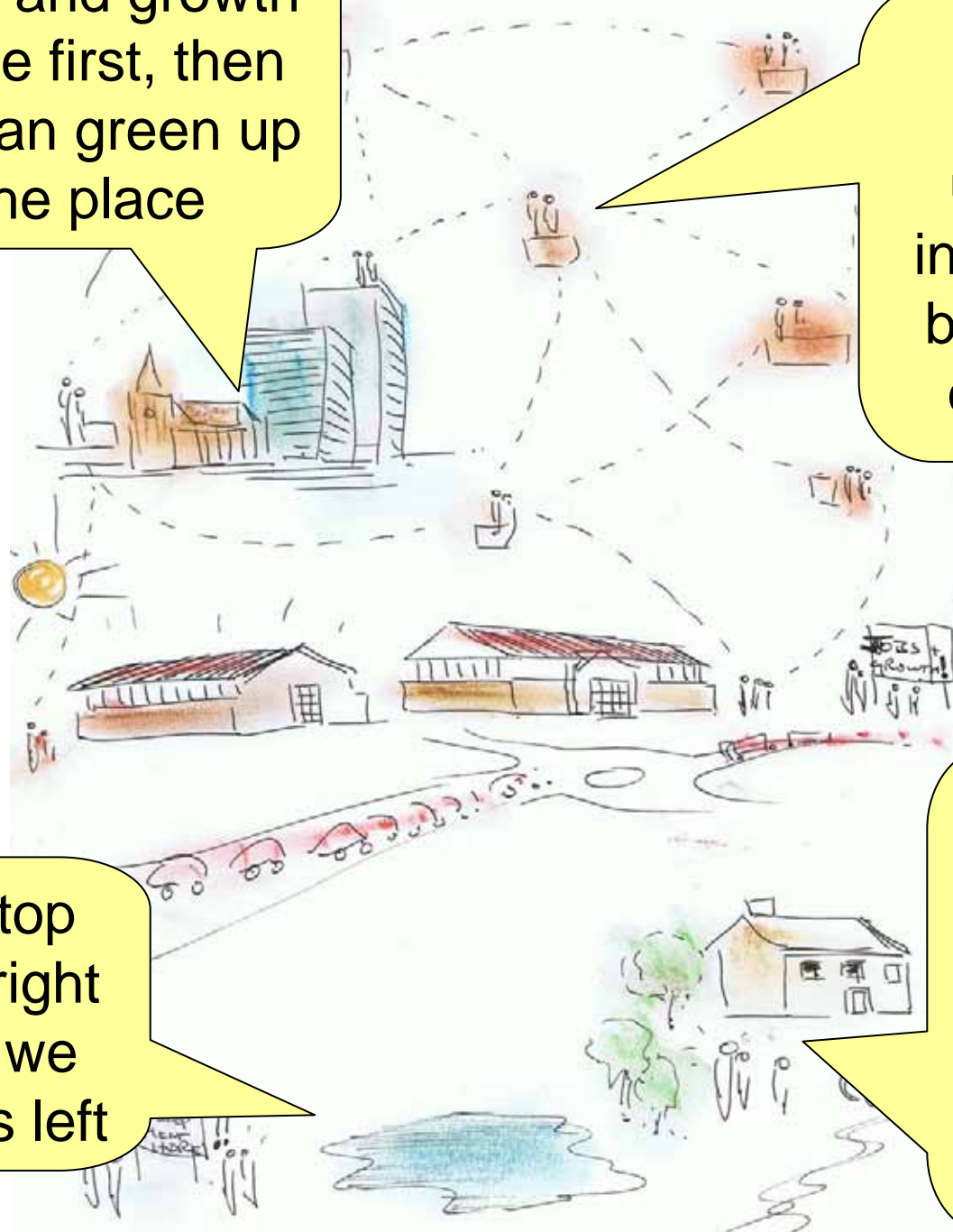
We've
farmed here
for 400
years and
nobody
gives a stuff

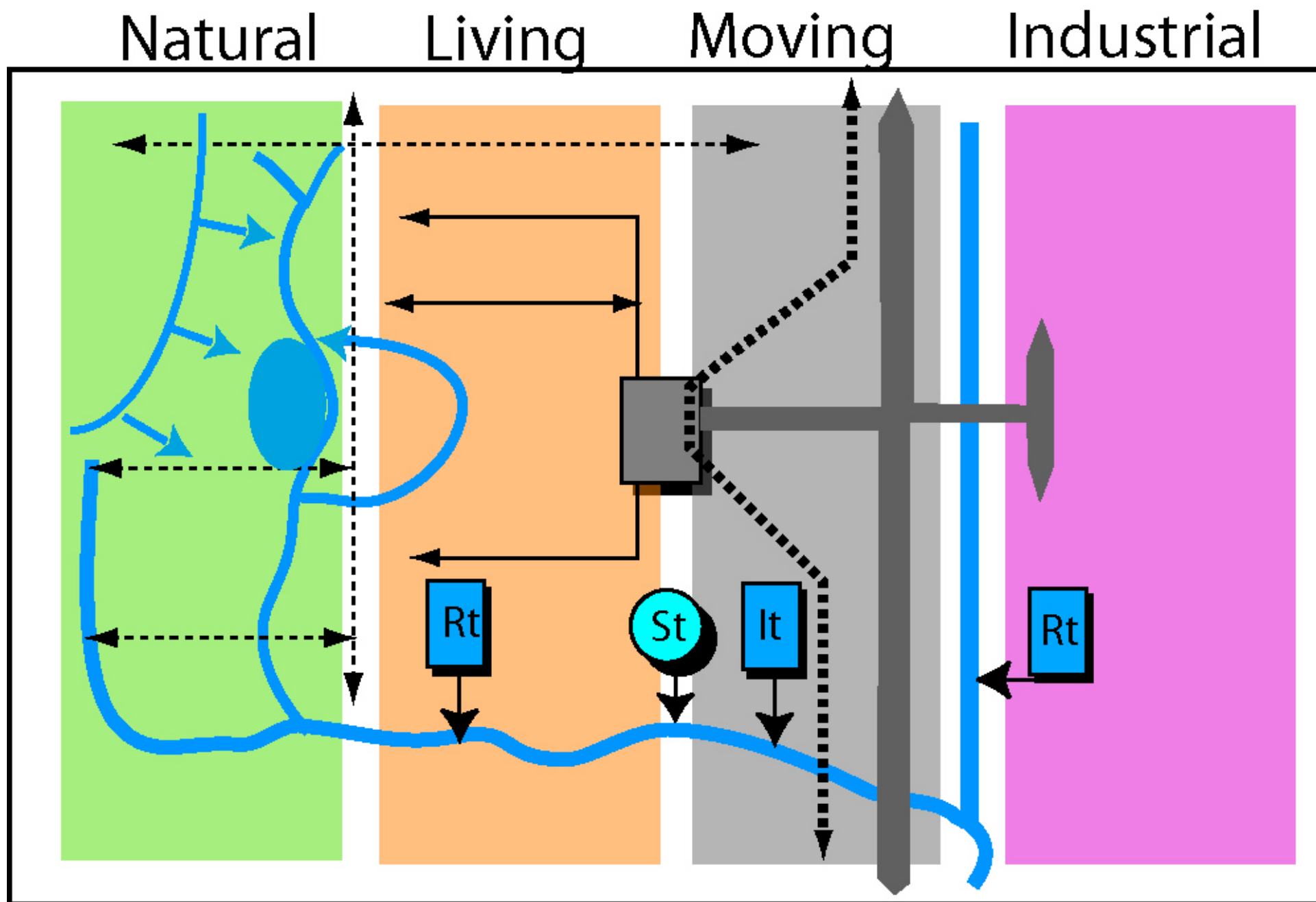
Jobs and growth
come first, then
we can green up
the place

They talk
about
university-
industry links
but they just
don't get it

We should stop
the concrete right
here, before we
destroy what's left

We've
farmed here
for 400
years and
nobody
gives a stuff





breathing

staying

moving

making

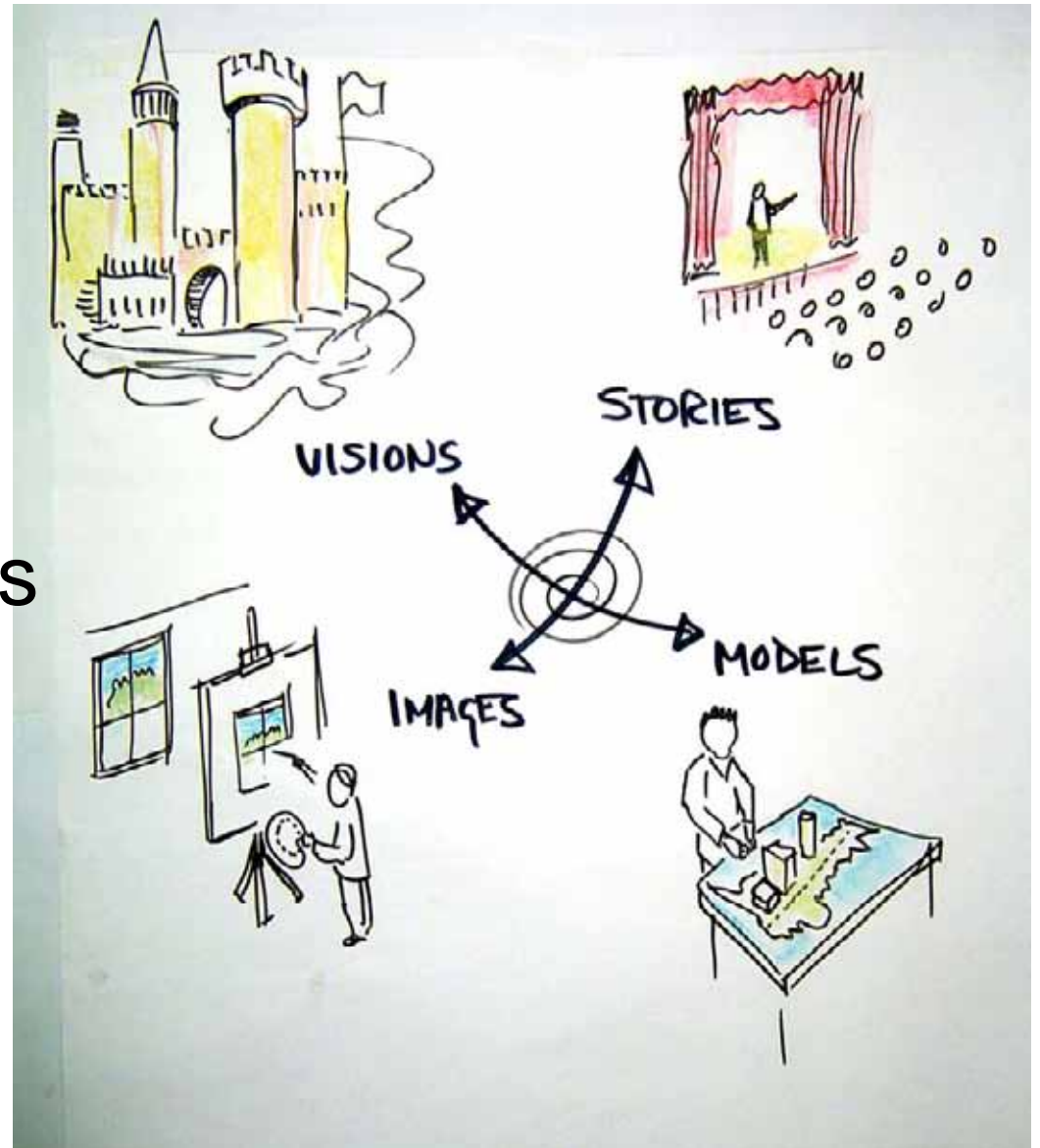
SLOW LANE

FAST LANE

THEMES - SCENARIOS

Scenarios

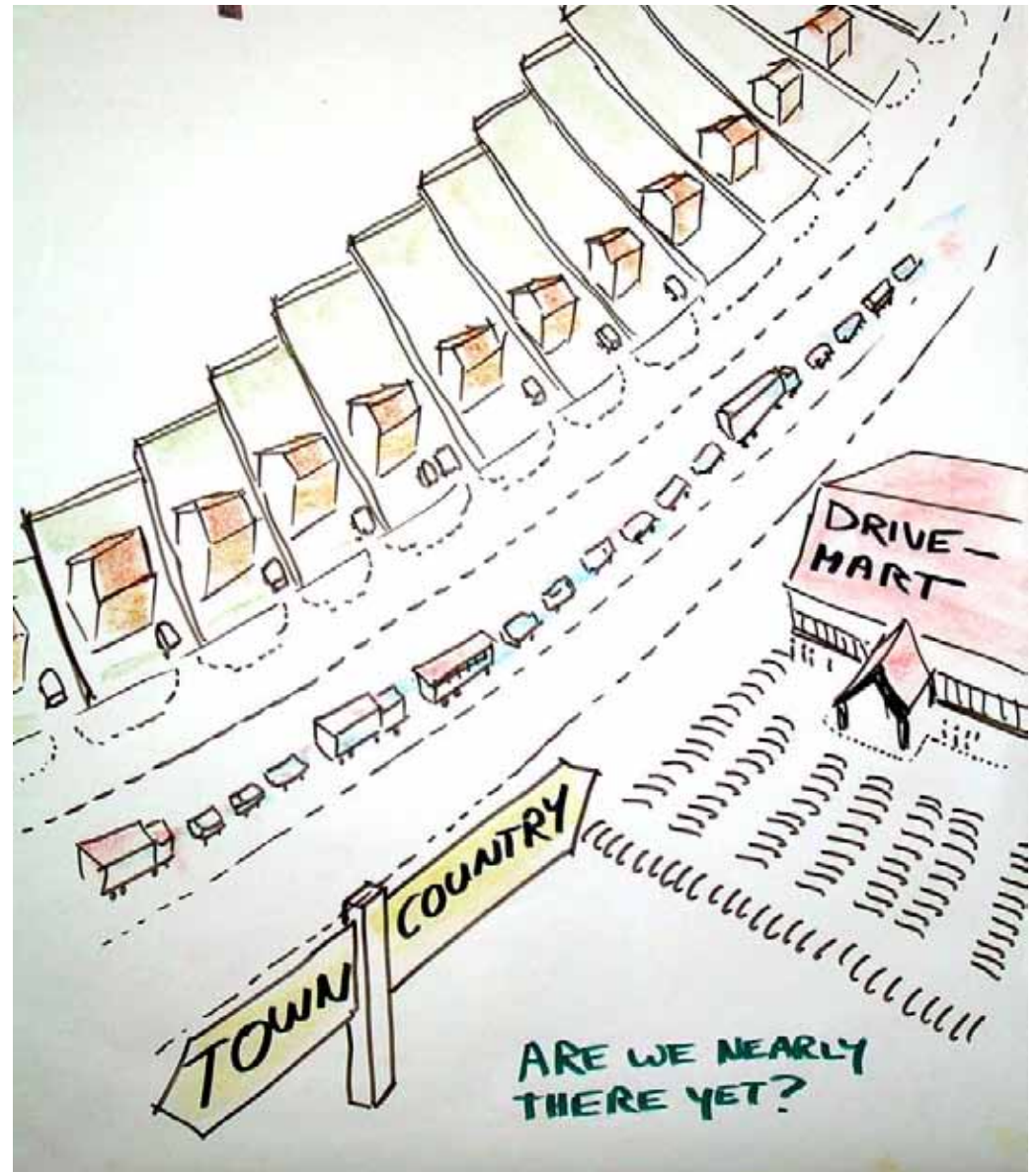
- Social learning by doing
- Unlocking the imagination
- Building the results step by step
- Taking it back to the world



Metro- land scenarios

A1 “HYPER-TECH” -

- The Pennine hills are sold to international property & tourist companies. Advanced IT enables new clusters of professionals to live/work in upland locations. There is ecological land management and high growth business, but the profits are taken back to Shanghai....



Metro-land scenarios

- **B2 – fragmentation**
- ethnic / cultural division of cities, driven by in-migration of the working-age population from outside and within the EU.
- Cities become more dispersed as younger migrants dominate city centres and older natives populate the outskirts and enclaves outside the cities, so that peri-urban areas become 'peri-society' areas.

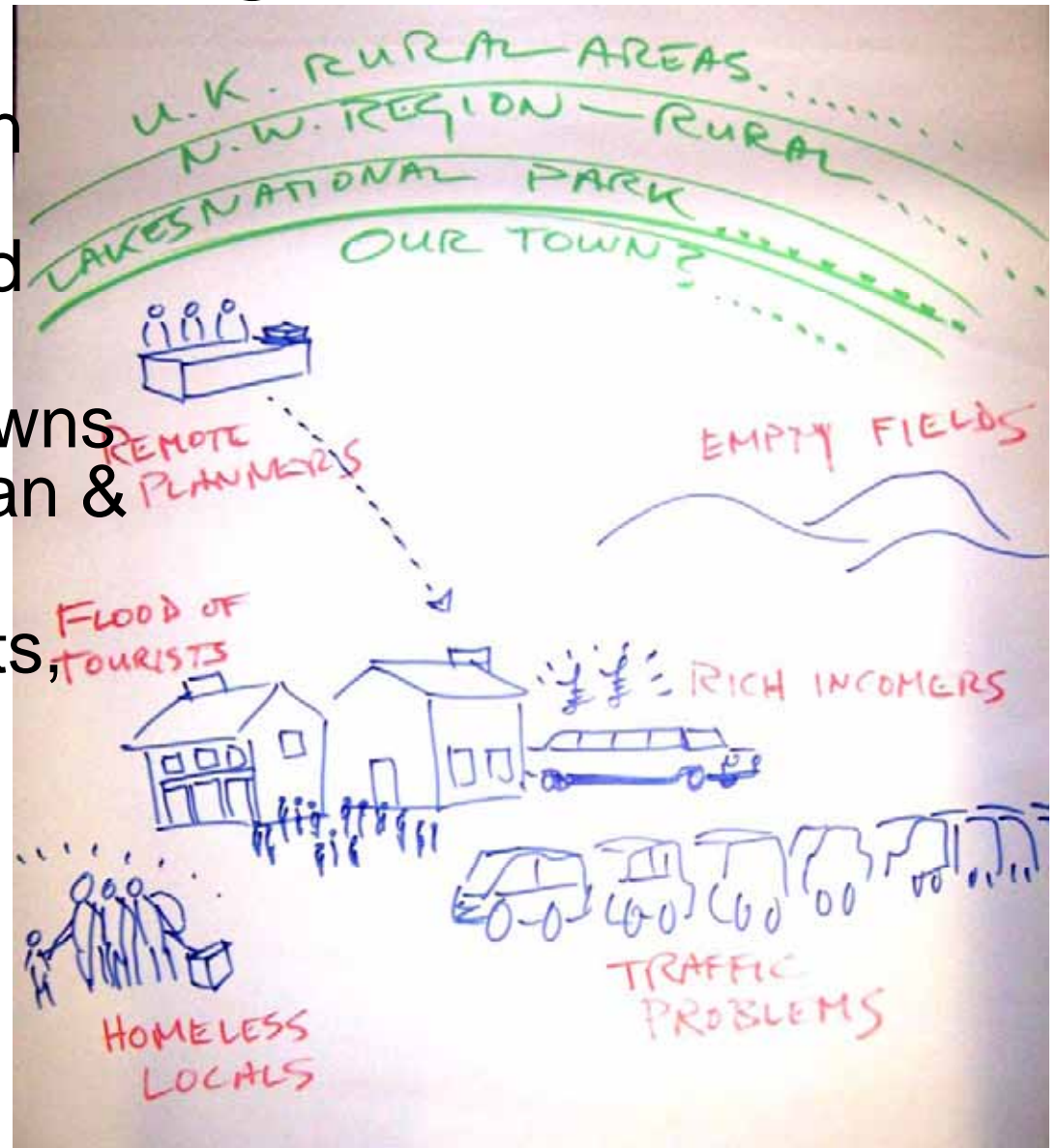


“PLUREL – THE PROJECT



Challenges

- where to build 3 million houses – green belts, flood plains, brownfield sites...??
- conversion of small towns and rural areas to urban & global networks.
- climate change impacts,
- growth in road traffic,
- ageing population,
- landscape stress,
- farm decline etc



Large complex research

THE PROJECT

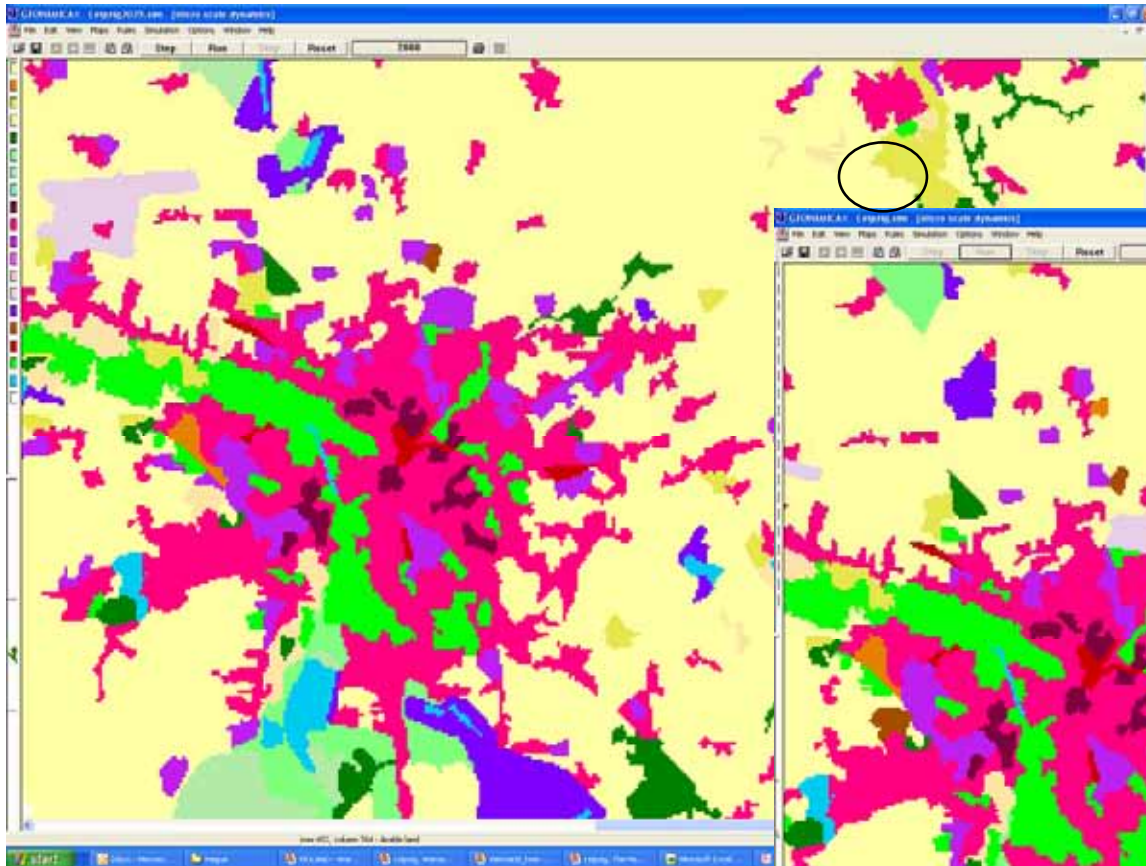
- 31 partners in 15 countries
- Technical modelling
- Policy analysis
- User workshops
- Creative programme

• RESULTS

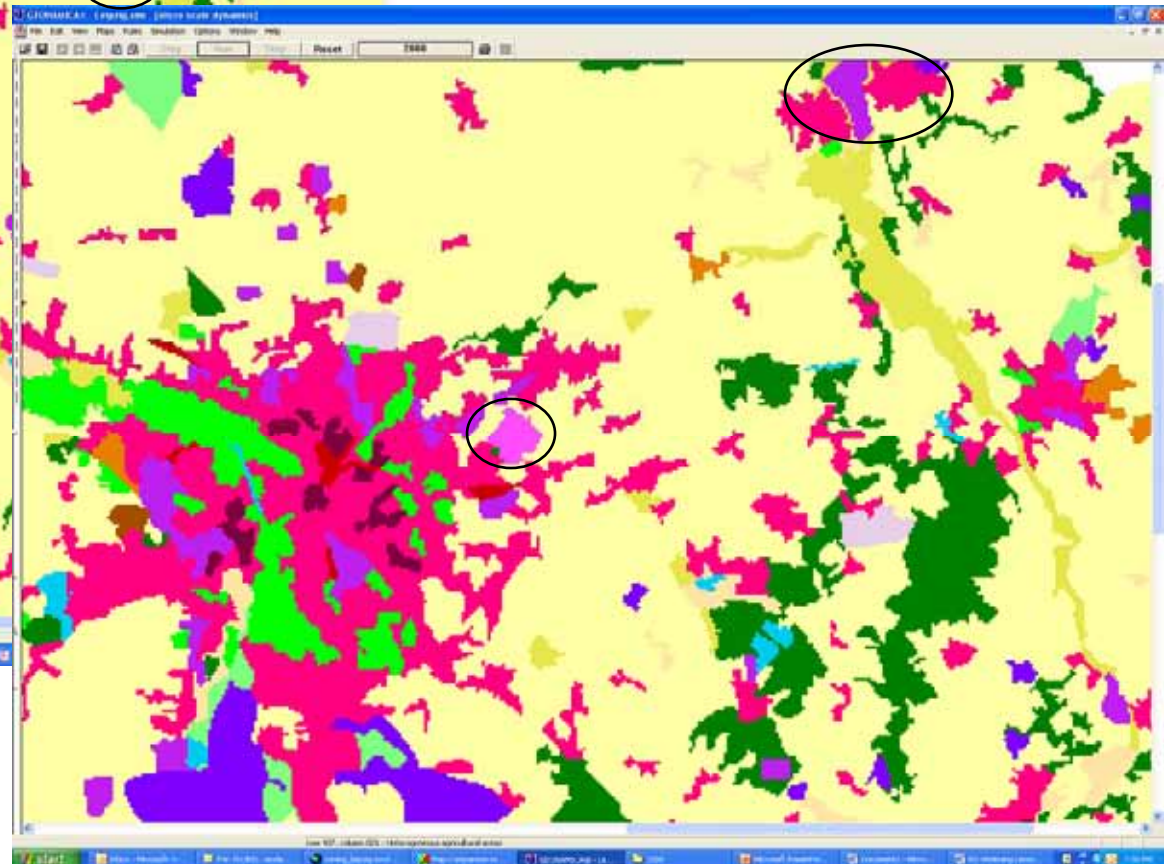
- Model outputs
- Scenario results
- Actions for improvement
- Sustainability tools

City-region models

2000 real



2000sim.



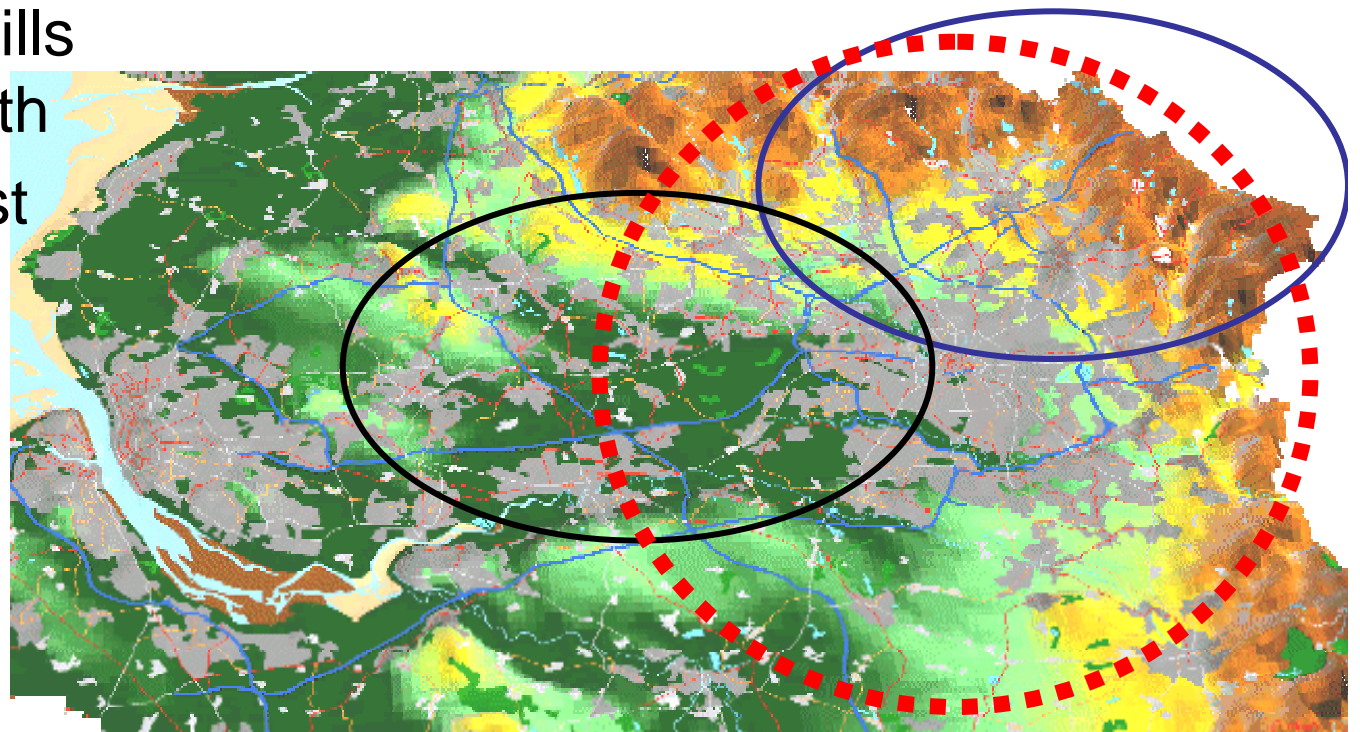
City-region cases



Manchester city-region

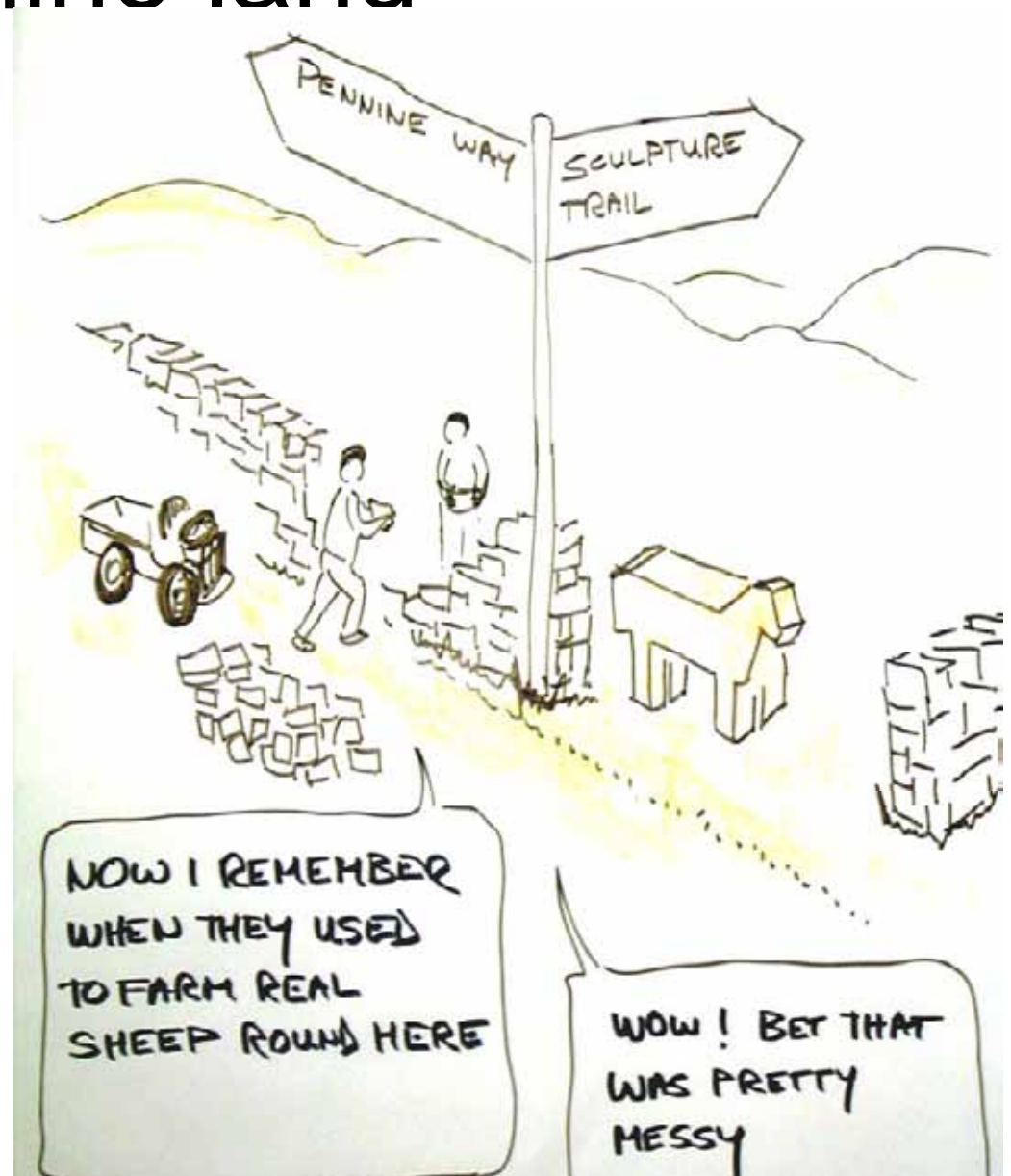
3 areas of focus

- South Pennine hills to the east & north
- Community forest on previous industrial land, between Manchester / Liverpool
- Economic & innovation policy at the hub.



Pennine land

- South Pennine uplands –
- mixed industrial settlements,
- commuter towns,
- small scale agriculture,
- leisure & tourism??
- Energy & food???



Forest land

- The Red Rose Forest & Pennine Edge Forest
- mixed industrial settlements,
- large urban infrastructure,
- pressure from housing and transport,
- multi-functional community forest.



NEXT STEPS

Den Haag – great debate



Manchester – great debate

- July 2010
- Exhibition
- Online
- Political debate
- Creative debate

Next steps

- Manchester city-region materials – environmental, political, social themes
- Resources going online...
- User workshops- Jan 2009 & 2010
- Creative programme
- International conference & exhibition – July 2010
- www.plurel.net
- www.manchester.ac.uk/cure