

## EVENTS PROGRAMME

***Evocative event: 25<sup>th</sup> May 6.30 – 7.45.***

---

Simultaneous projections in the main chamber, with wine & refreshments:

**Introduction:** experiential materials from the Policy Workshop: J.Ravetz

**a) SCENE (SCEnarios for Natural Environment) 2060:**

Molly van der Weijl / SAMI / CURE for Natural England: [www.Visualarts.com.uk](http://www.Visualarts.com.uk)

**b) Experiential peri-urban:**

students at MIRIAD (Manchester Institute for Research into Art and Design)

- The Green House
- Trans-navigational
- Pomona city of dust

**c) Mixed media:**

- South Pennine Watershed Landscapes
- Metroscape Manchester

**d) A transverse section of England**

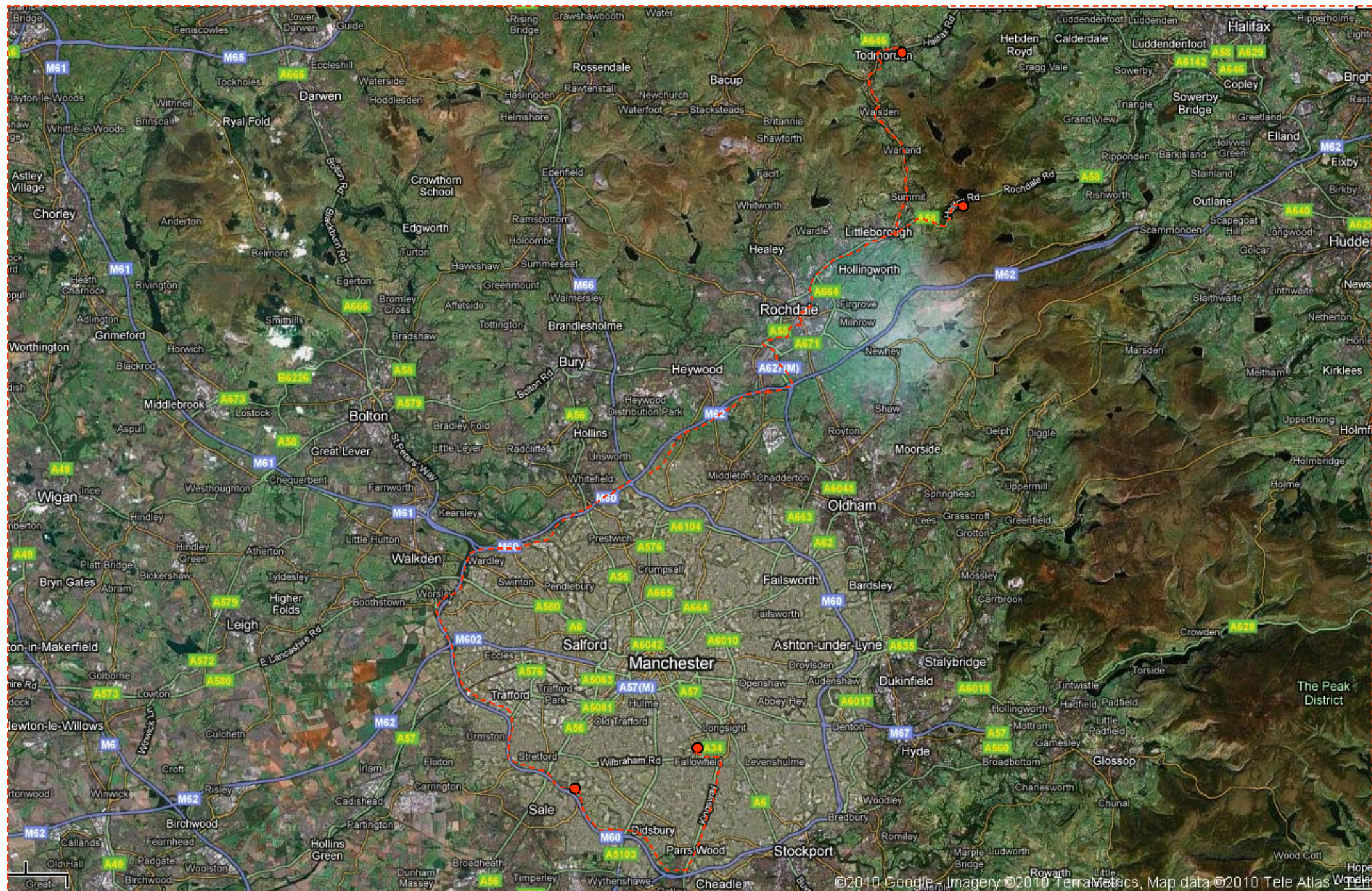
(google earth animation)

## Field trip: 26<sup>th</sup> May 4.00 – 9.00

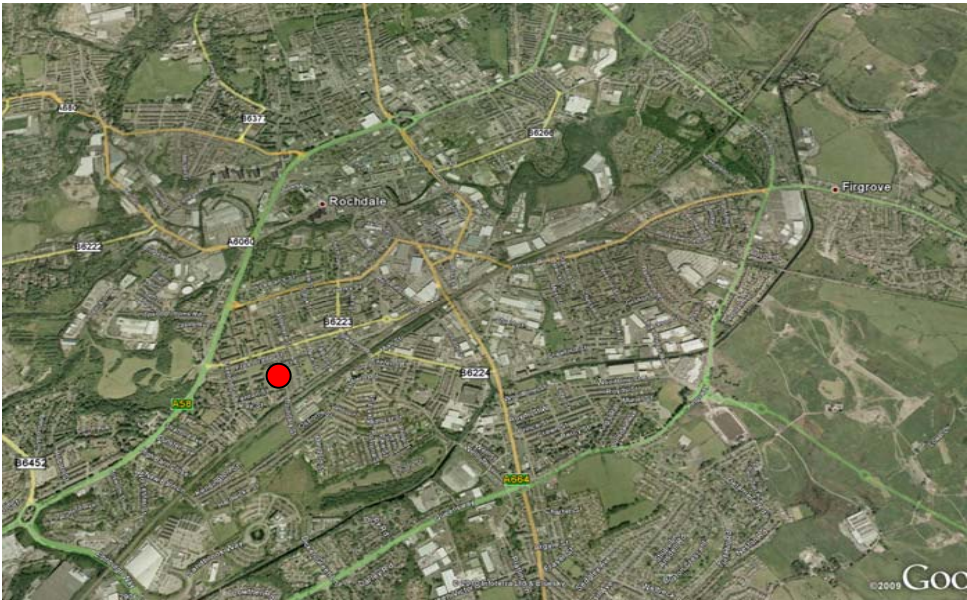
4.00	Leave Chancellors conference centre	
4.30	5.00	Sale Water Park (Mersey Valley Countryside Warden Service) <a href="http://www.merseyvalley.org.uk/site/index.php?option=content&amp;task=view&amp;id=51&amp;Itemid=73">www.merseyvalley.org.uk/site/index.php?option=content&amp;task=view&amp;id=51&amp;Itemid=73</a>
5.00	5.45	Travel through Rochdale: inner city & outer suburb through Littleborough to Blackstone Edge <a href="http://www.co-operative.coop/aboutus/ourhistory/">www.co-operative.coop/aboutus/ourhistory/</a> <a href="http://museum.co-op.ac.uk/">http://museum.co-op.ac.uk/</a> <a href="http://oldham.groundworknw.org.uk/project.asp?action=view&amp;id=1599">http://oldham.groundworknw.org.uk/project.asp?action=view&amp;id=1599</a>
5.45	6.15	Blackstone Edge (lookout point above Littleborough): introduction to Pennine Prospects Watershed Landscapes & Moors for the Future <a href="http://www.pennineprospects.co.uk/watershed-landscape">www.pennineprospects.co.uk/watershed-landscape</a> <a href="http://www.moorsforthefuture.org.uk">www.moorsforthefuture.org.uk</a>
6.15	6.30	Travel to Todmorden: alight at Dale St by the Rochdale Canal. <a href="http://www.todmorden.org/">www.todmorden.org/</a> <a href="http://www.penninewaterways.co.uk/rochdale/">http://www.penninewaterways.co.uk/rochdale/</a>
6.30	7.30	Guided tour of the award winning Incredible Edible Todmorden sites around the town centre: arrive at Unitarian Church <a href="http://www.incredible-edible-todmorden.co.uk/">www.incredible-edible-todmorden.co.uk/</a> <a href="http://todunitarianchurch.caldercats.com/home.html">http://todunitarianchurch.caldercats.com/home.html</a>
7.30	8.45	Buffet dinner, in the Unitarian Church grounds, by the Bear Outside: with fresh organic local food from Incredible Edible and nearby sources. <a href="http://www.bearco-op.com/about">http://www.bearco-op.com/about</a>
9.00	9.45	Return directly to Chancellors

### Menu for the dinner:

<p><b>Plurel Evening Supper</b> Wednesday 26th May</p> <p>Upon arrival guests will be offered a choice of red or white wine or a non alcoholic sparkling elderflower</p> <p><u>Canapes</u></p> <p>Local ham with mustard &amp; watercress on crostini Homemade hummus &amp; olive crostini Red onion &amp; goats cheese parcel Asparagus mousse &amp; local bacon canape</p> <p><u>Main buffet</u></p> <p>Locally sourced roasted carp with peppers, pancetta &amp; basil Local sausage cassoulet with red wine &amp; herbs</p> <p>Both served with wild rice/roasted chippings</p> <p>Fennel &amp; mascarpone tart Courgette &amp; mint local egg frittata</p> <p><u>Salads</u></p> <p>Beetroot &amp; orange salad Mixed greens &amp; local herbs salad Apple, celery &amp; charred broccoli salad Roasted vegetable pasta salad</p> <p><u>Desserts</u></p> <p>Local parsnip &amp; maple syrup cake with clever cow dairy cream Selection of local cheese &amp; IET chutney with biscuits</p>
--

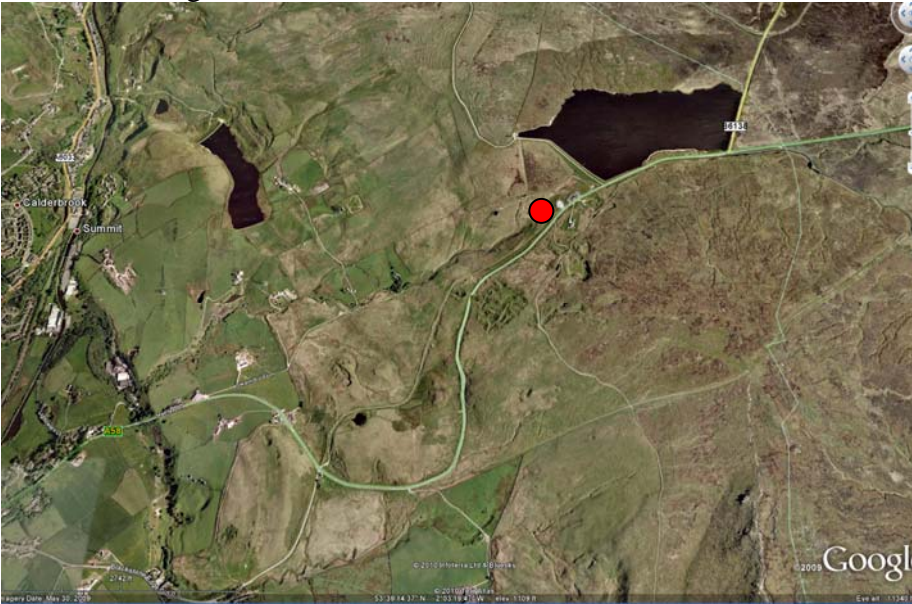


Sale water park



Rochdale

Blackstone Edge



Todmorden