

CURE lunchtime seminar - 5th May 2011, 1-2pm

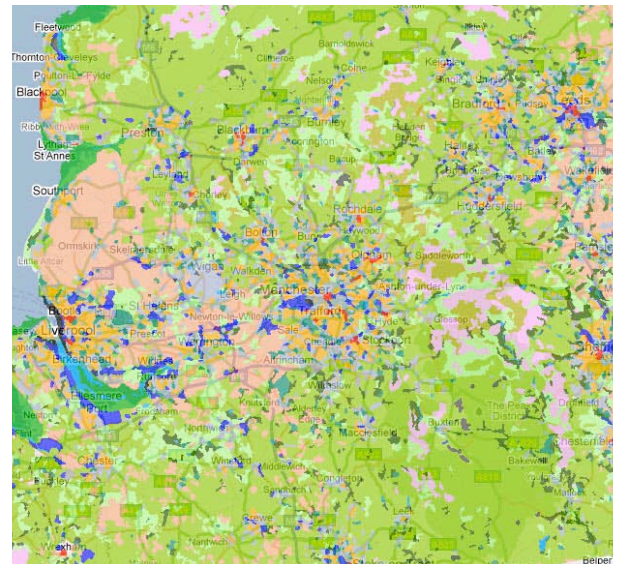
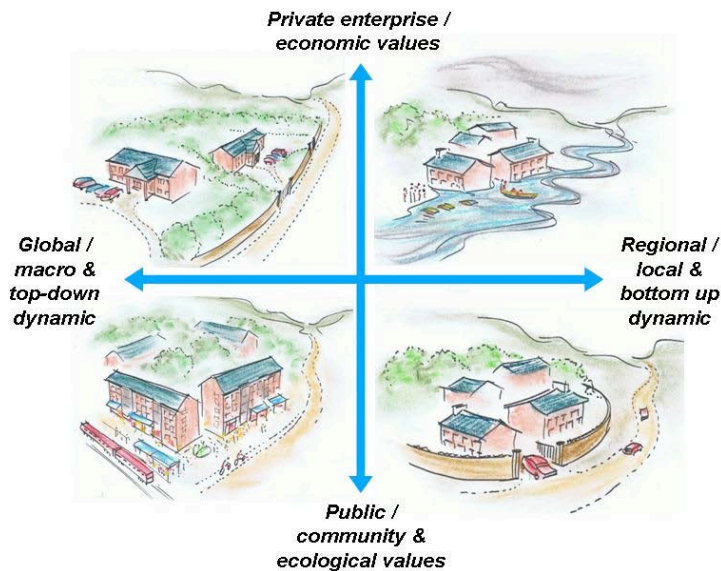
LANDUSE & DEVELOPMENT IN THE CITY-REGION

Joe Ravetz, CURE

Results from the European project PLUREL ('Peri-urban landuse relationships')

Jasper van Vliet (Research Institute for Knowledge Systems, Maastricht)

Modelling development & landuse change with the 'Metronamica' system



+++++

This is a re-start of a popular long-running series – interactive debate on topical issues and current research, from CURE members and collaborators.

- Time: 13.00 – 14.00 Thursday May 5th
- Location: Boardroom, 2nd floor, Arthur Lewis Building
- Format: 10 minute presentations followed by discussion
- Catering: bring a sandwich, cold drinks supplied
- Further information – www.manchester.ac.uk/cure

+++++