

Sharing the city:
inclusive design and research

The designers perspective
Defining Inclusion
Sharing the city: research as impact


Stefan White

Architect, Senior lecturer, Manchester School of Architecture

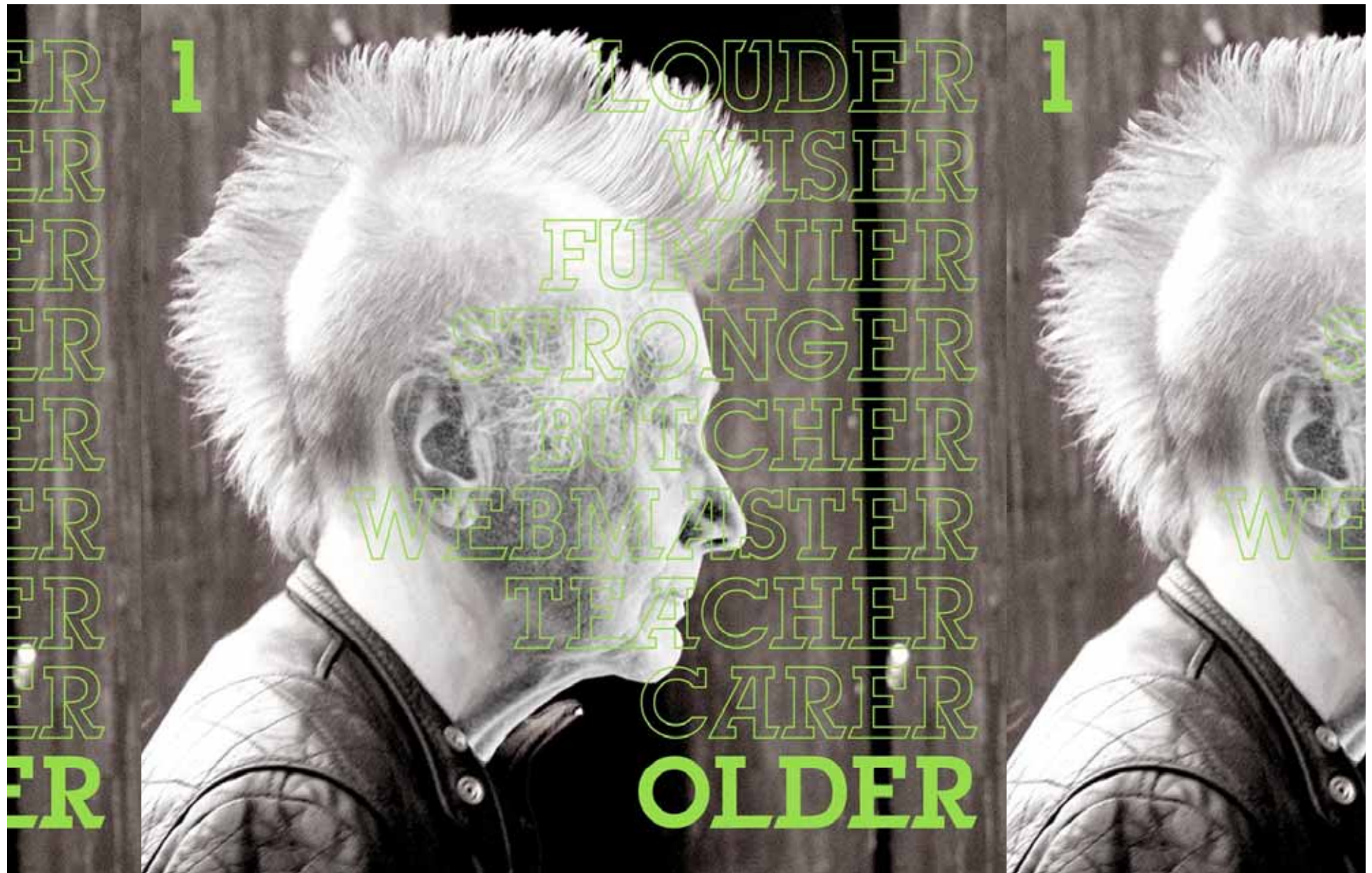
MSA projects

**by 2050 there
will be 2 billion
people over 60
worldwide**

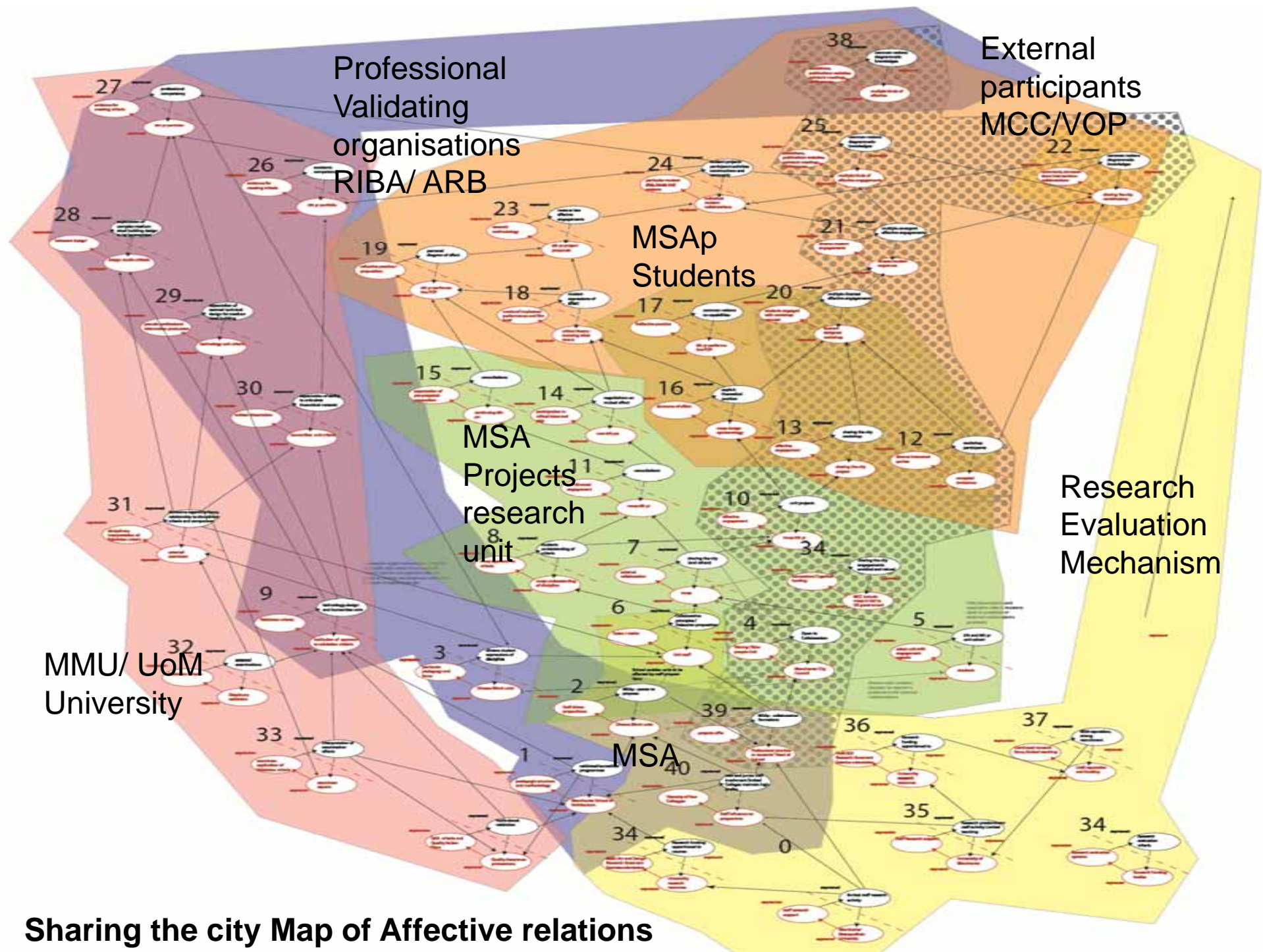
**there are
currently 600
million people
aged 60 and
over worldwide**



**We have a global problem
With environmental and social
dimensions**



Which we must resolve locally

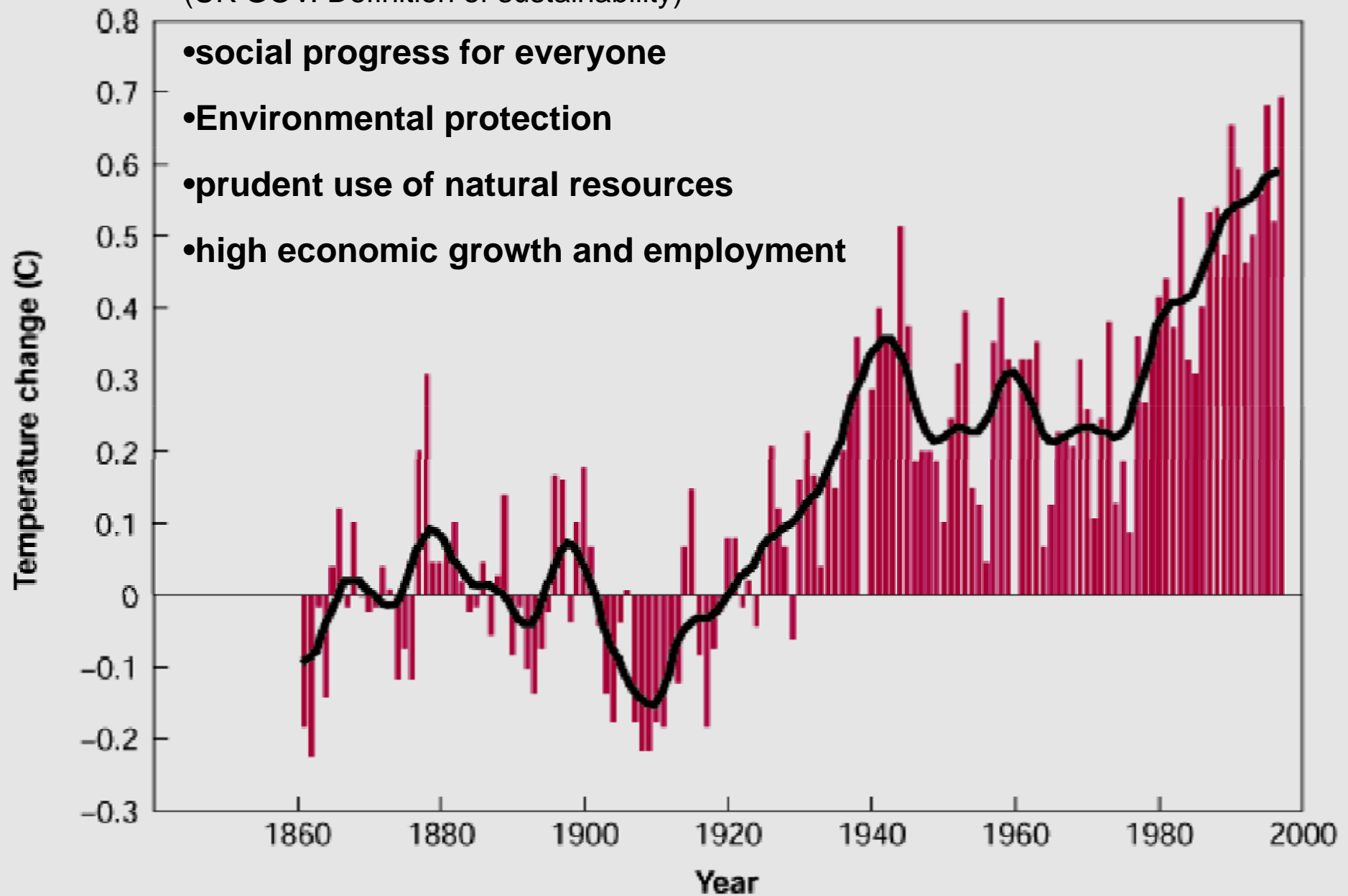


Sharing the city Map of Affective relations

Figure 1 Climate change

(UK GOV. Definition of sustainability)

- **social progress for everyone**
- **Environmental protection**
- **prudent use of natural resources**
- **high economic growth and employment**



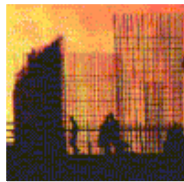
Resource Systems - material/ energy



Low impact materials

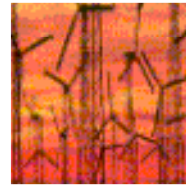


Energy efficiency

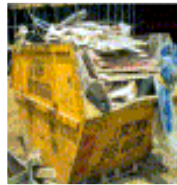


Structural Efficiency

Environmental systems - passive/climate



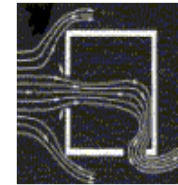
Harvesting energy & water



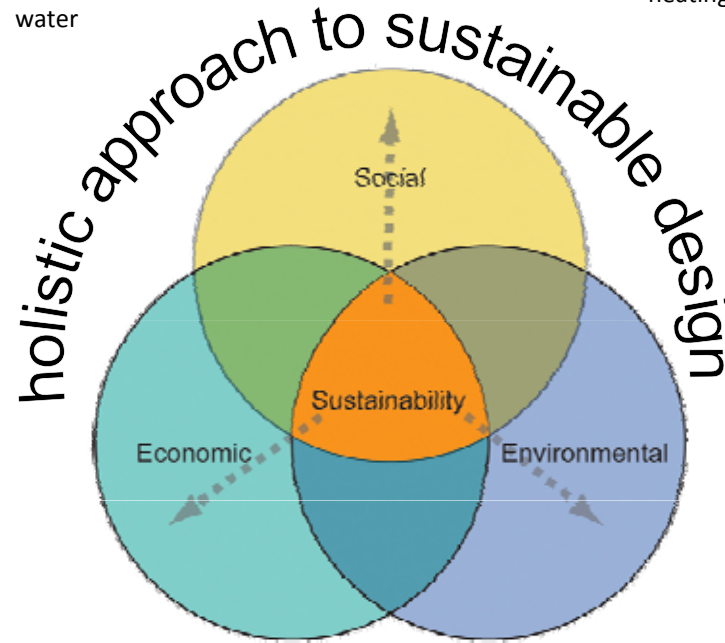
Waste Management



Minimise whole life costs



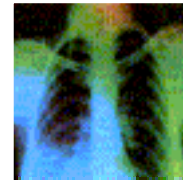
Passive heating/cooling



Adaptability



Inclusive design

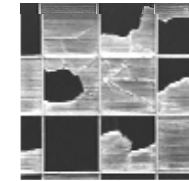


Design for health & comfort

Placemaking



Secured by Design



Improve ecological value



Community involvement

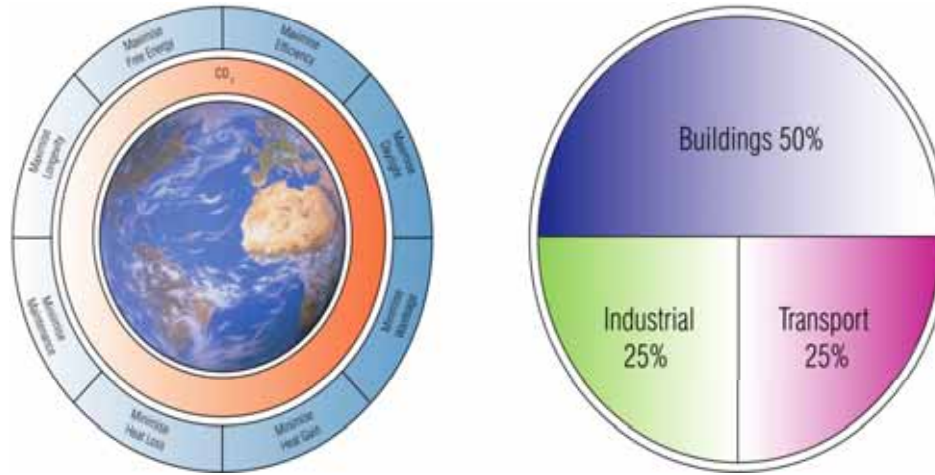


Urban systems – political/social

Construction Systems - active/material

From holistic to Complex

Policy: Sustainable communities / lifetime neighbourhoods / community cohesion



‘sense of place...user-friendly...with visible, effective and community-friendly policing’

‘To ensure all communities have a clean, safe and attractive environment in which people can take pride’ (ODPM, 2003: p.3)

create cleaner, safer and greener neighbourhoods (e.g. by reducing litter and graffiti and maintaining pleasant public spaces) (ODPM 2005: p.2)

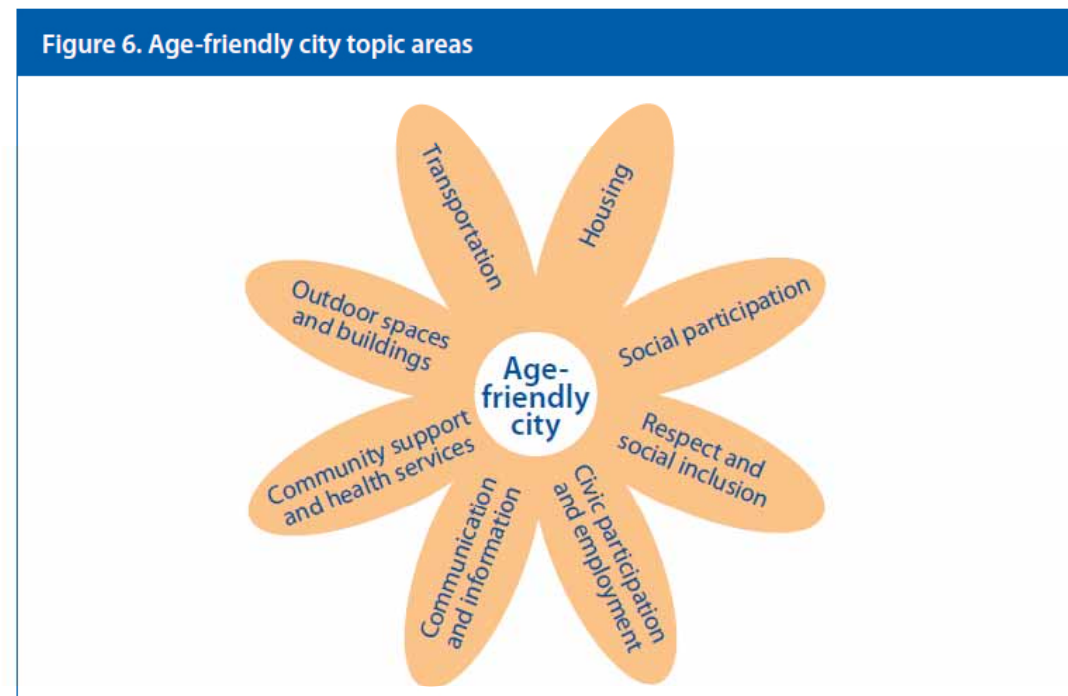


Greenwich millennium village



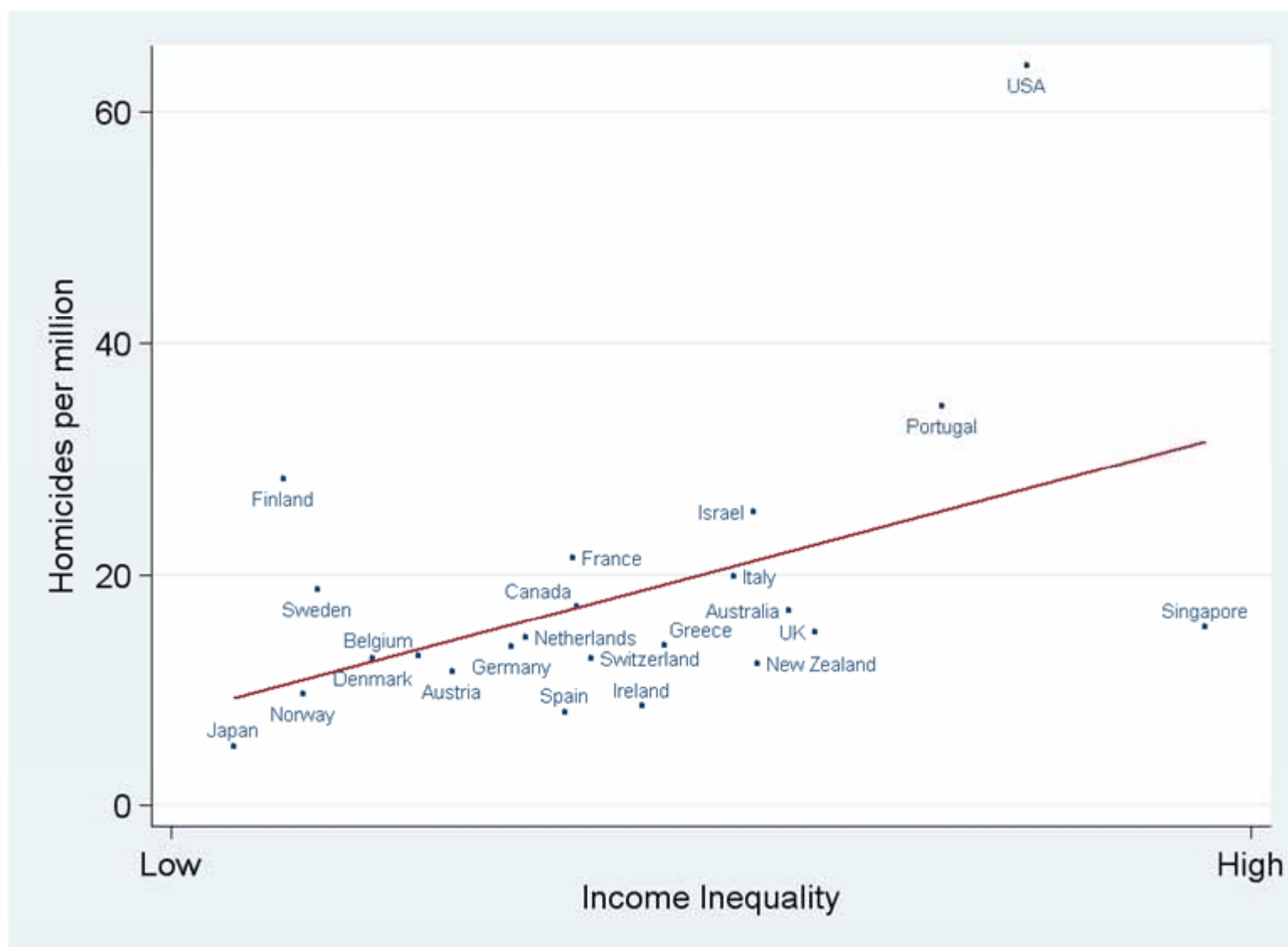
- Connecting Communities originated in the mid 1990's with the [Beacon Project](#) which dramatically reversed the health and social decline of the community of the Beacon and Old Hill Estate, near Falmouth, West Cornwall.
- **After**
- By 2000, the overall crime rate had dropped by 50%.
- Affordable central heating and external cladding had been installed in over 60% of the properties
- Child Protection Registrations had dropped by 42%.
- Post-natal depression was down by 70%.
- Breast feeding rates increased by 30%
- The educational attainment of 10-11 year old boys - i.e., level 4, key stage 2 - was up by 100%.
- In 2002 there were no unwanted teenage pregnancies.
- Unemployment rate fell by 71% amongst both males and females.

- ‘The city’s landscape, buildings, transportation system and housing contribute to confident mobility, healthy behaviour, social participation and self-determination ...social participation fosters strong social connections and personal empowerment. ..reinforced by a culture that recognizes, respects and includes older people. (WHO AFCG)



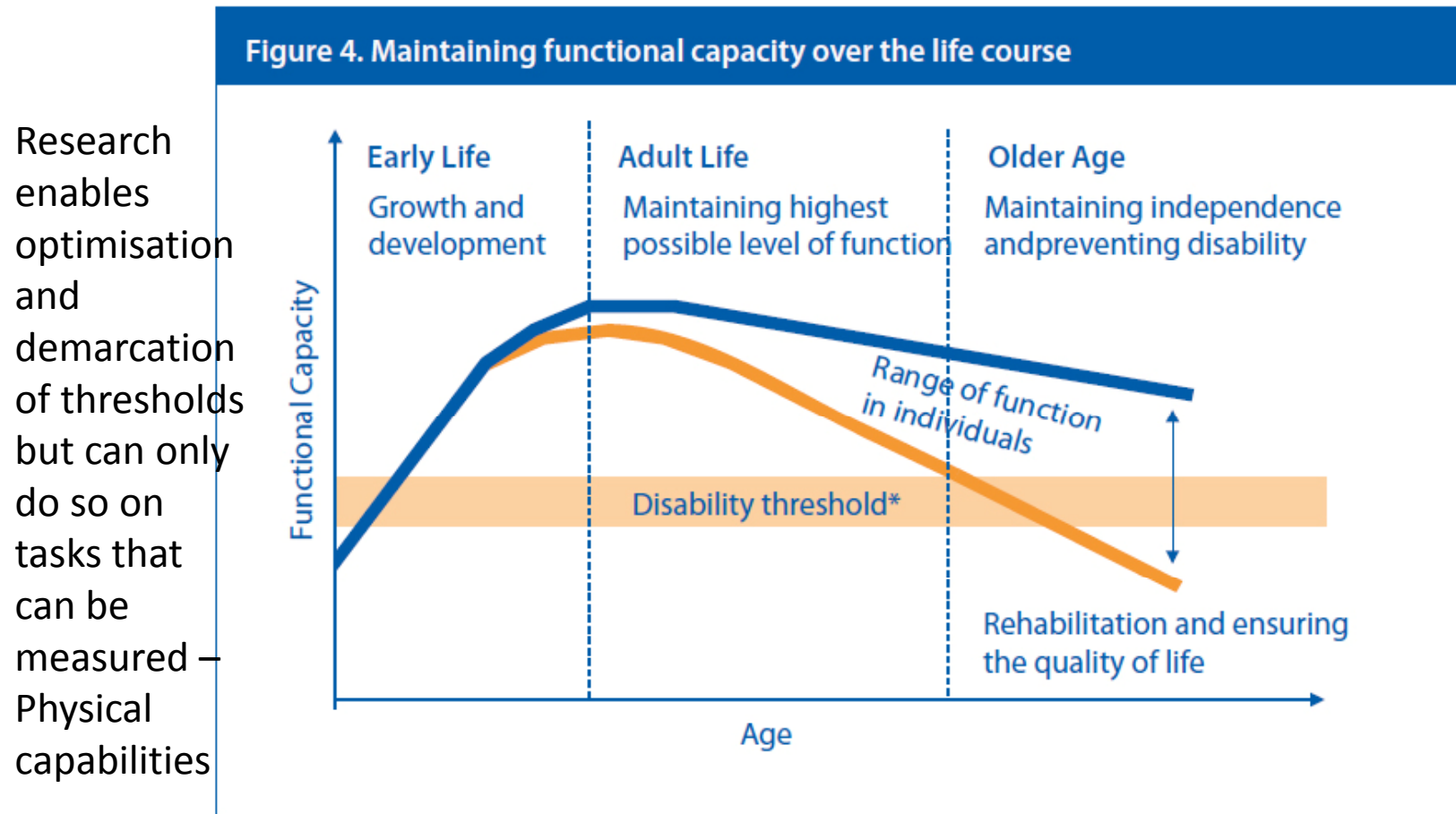
- Environmental: Geneva and Sherbrooke have installed surveillance cameras
- Social: self-organized groups among older people for greater outdoor safety
- Economic: provide a grant to enable older people to improve their security

Homicide Rates are Higher in More Unequal Rich Countries



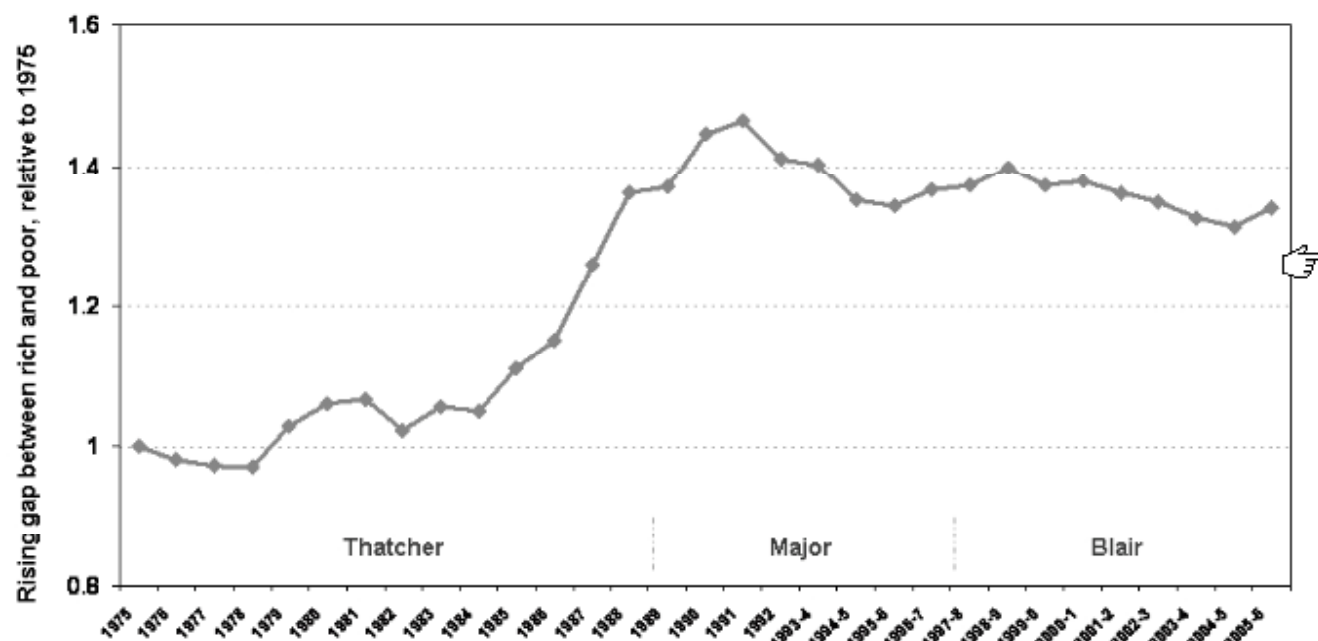
Source: Wilkinson & Pickett, *The Spirit Level* (2009)

An age-friendly city anticipates users with different capacities instead of designing for the mythical “average” (i.e. young) person



There should be enough public seating and toilet facilities; dropped curbs and ramps to buildings should be standard features, and lights at pedestrian crossings should be safely timed. Building and housing design should be barrier-free.

Trends in UK income inequality 1979-2005/6

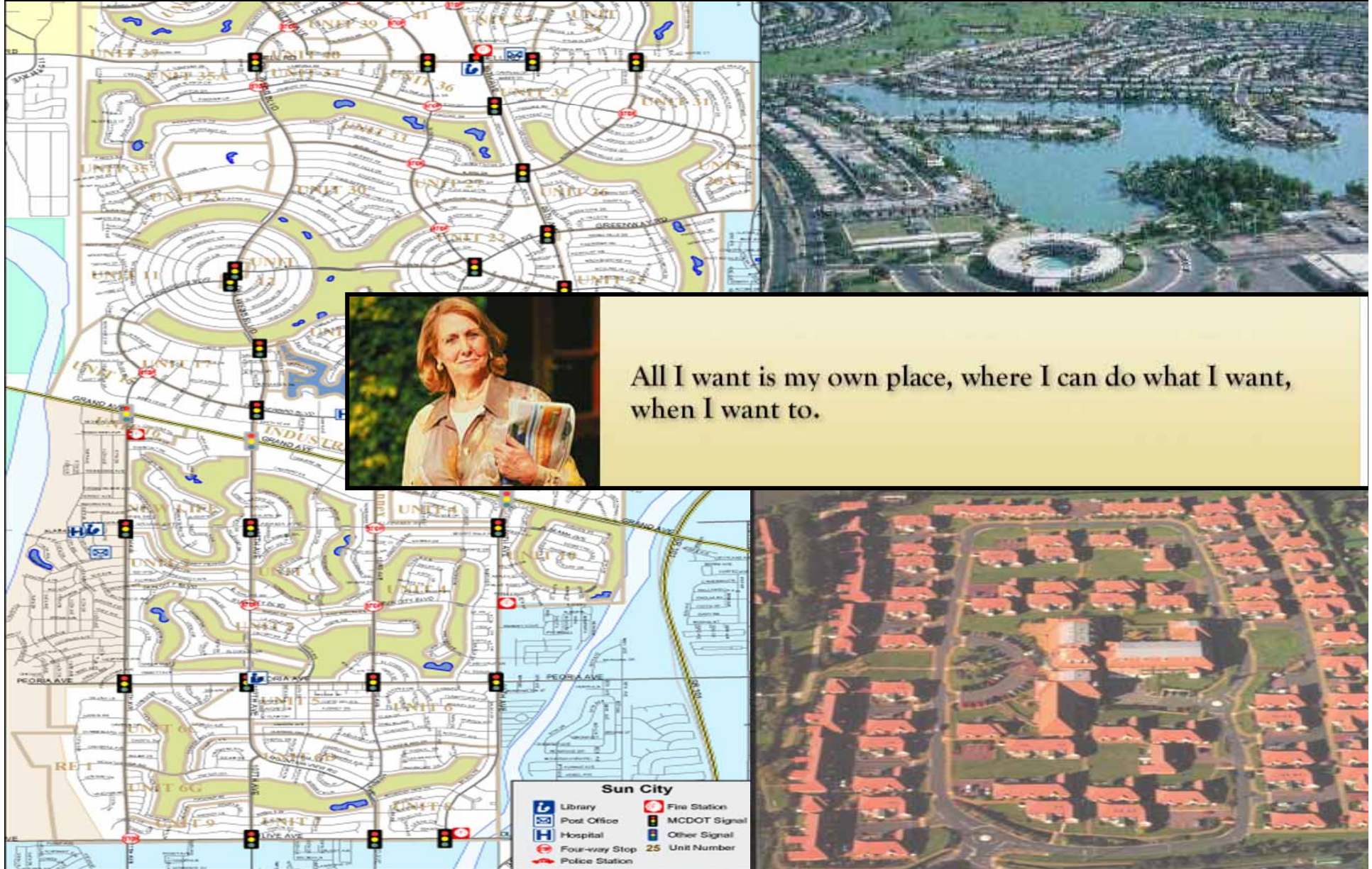


Source: Wilkinson & Pickett, *The Spirit Level* (2009)

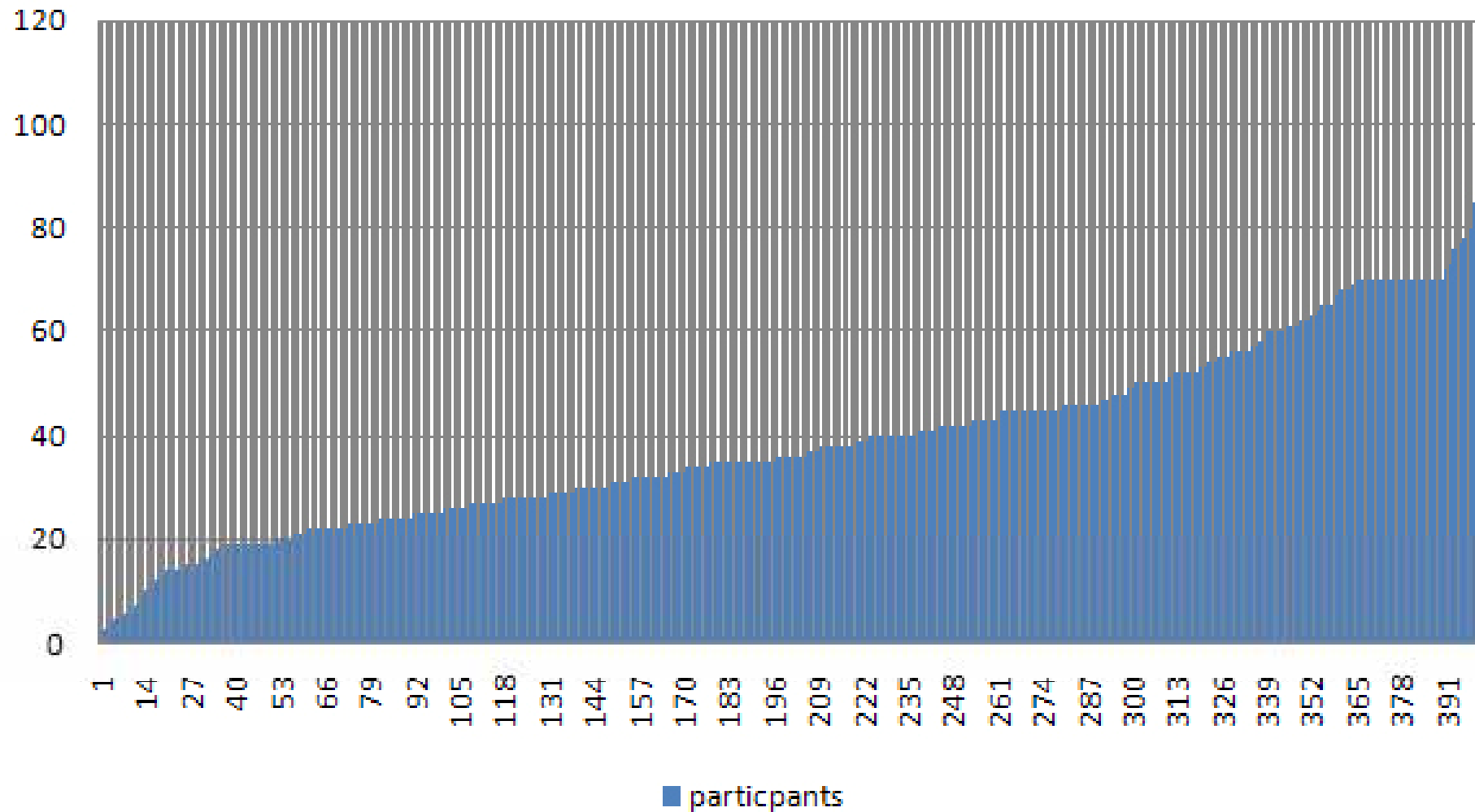
Social Mobility is Higher in More Equal Rich Countries



City = Citizen + architecture



Age spread: Sharing the city



Inclusive Urban Design: Method

- 1** Is concerned with both **power and place**
- 2** Values local expertise and **social labour**
- 3** Is neither universal nor absolute, but **negotiated**
- 4** Enables space to be **shared**
- 5** Is an **active** social labour



Pursue projects



reads her poem. we get talking to some



gentlemen approaches and talks about



The Secret Garden: An Irk valley walk

led by recent architecture graduate Joe Wood, the Secret Garden walk will explore a slice of North Manchester which is rarely seen or talked about. It aims to explore the effect that Manchester's past and people have had on its environment, and particularly the hidden areas of nature.

Meet at Audelia's book basement,
371 Chorlton Hill Road, M13 9PL
(Practical Newsagents)

It's a good idea to bring binoculars and suitable clothing for an April day in Manchester, as well as refreshments. If you wish to come along please email kikerenza.net to confirm your place.



Saturday
10th April

11am-1pm

please email
kikerenza.net
to confirm your place.



give out



available to download

Know more

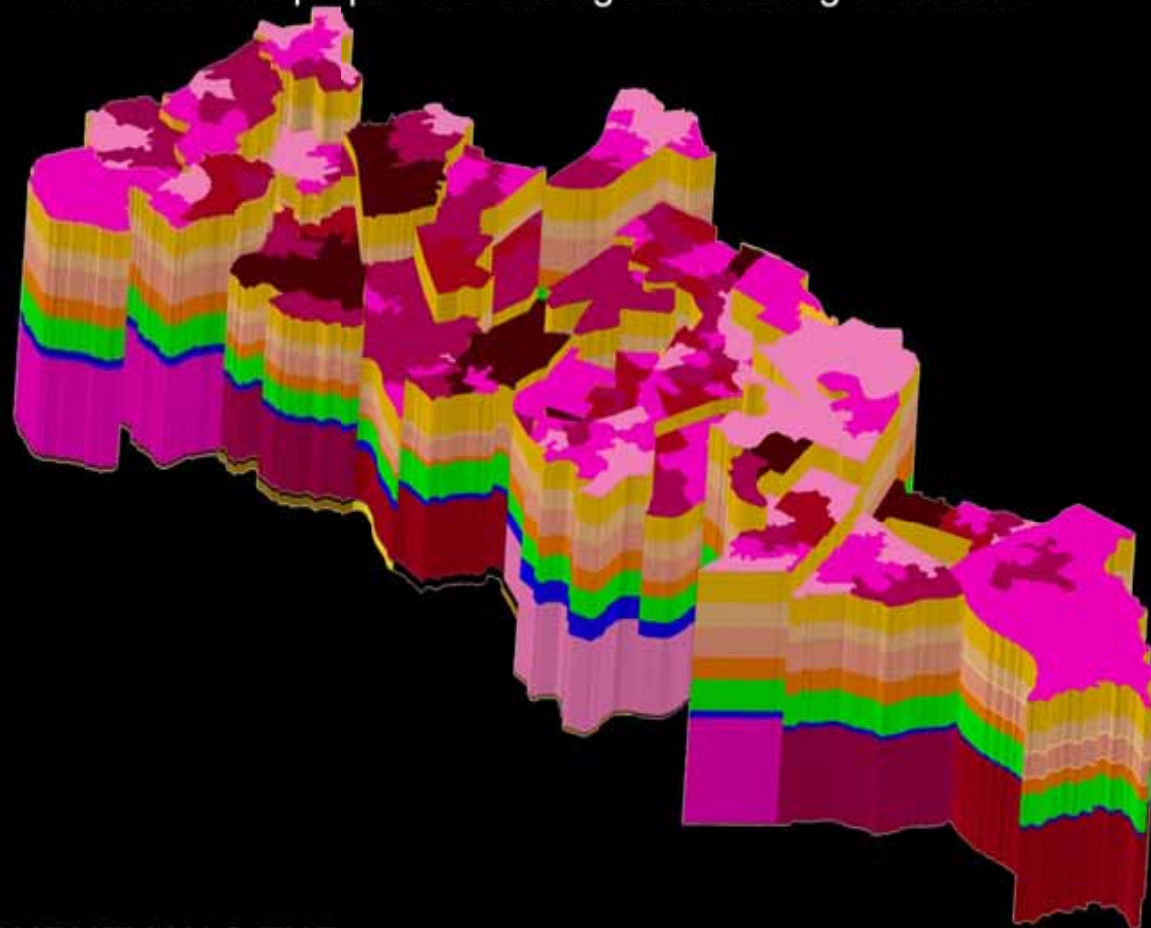
statistical information and ward analysis

key:

- total population
- deprivation
- deprivation
- deprivation
- education
- mobility
- ethnicity asian
- ethnicity black
- ethnicity chinese
- ethnicity mix
- ethnicity white
- ownership
- ownership
- ownership
- ownership

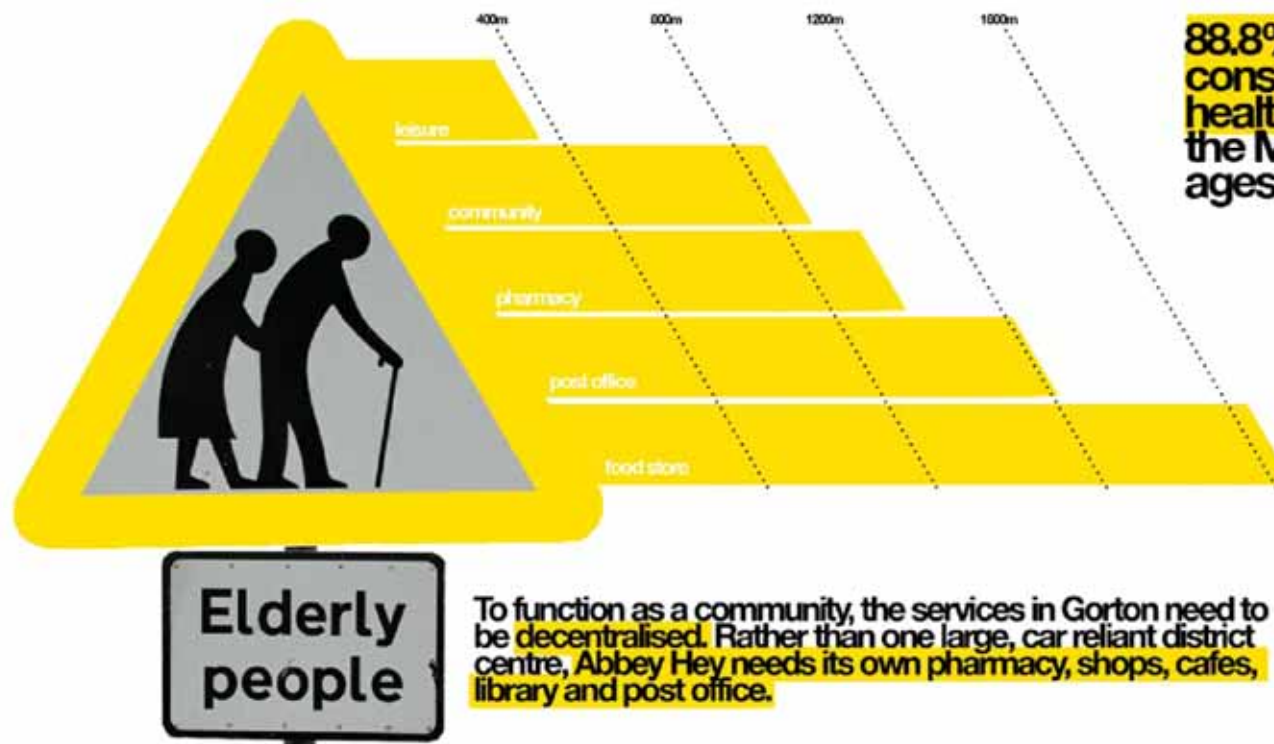
THERE ARE 52,006 OLDER PEOPLE LIVING IN MANCHESTER

by 2050 there will be 2 billion people over the age of 60 living worldwide



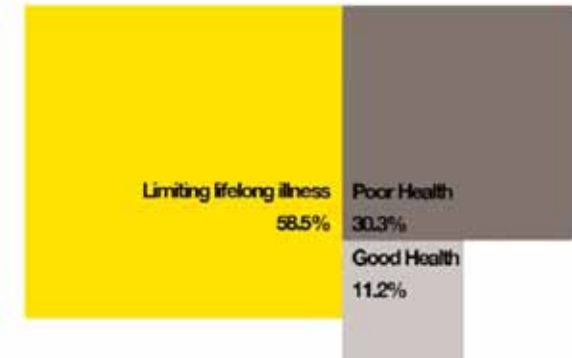
HARPURHEY HAS THE LOWEST LEVEL OF GOOD HEALTH @ 57%

DIDSBURY HAS THE HIGHEST LEVEL OF GOOD HEALTH @ 78%

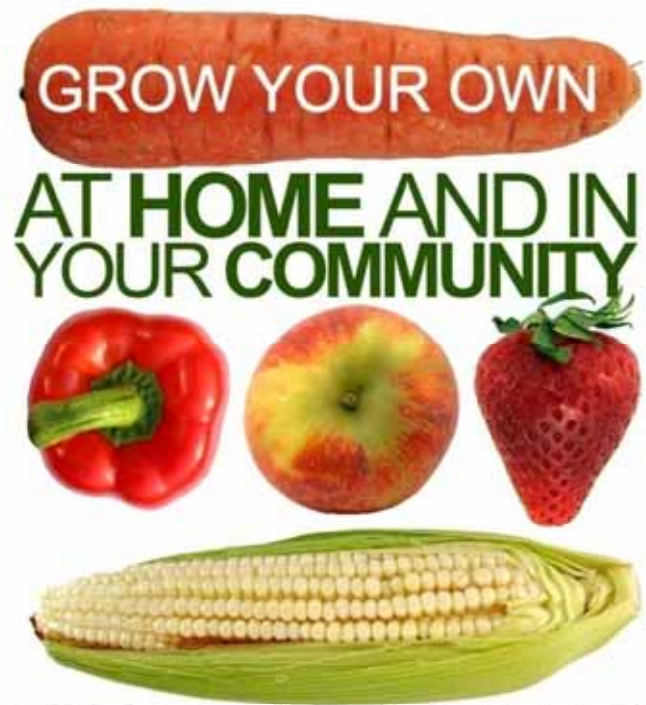


To function as a community, the services in Gorton need to be decentralised. Rather than one large, car reliant district centre, Abbey Hey needs its own pharmacy, shops, cafes, library and post office.

88.8% of over 65s in Gorton consider themselves to be in poor health, compared to just 12% of the Manchester average for all ages.



Advocate inclusion



**STARTER KITS AND ADVICE
AVAILABLE ON: FRIDAY 18TH DEC**
AS PART OF THE MANCHESTER SCHOOL OF ARCHITECTURE
CHRISTMAS MARKET
10am - 6pm ROOM 602 CHATHAM TOWER, CAVENDISH STREET M15 6BR
FREE MULLED WINE AND FOOD!



Public exhibition at the School of Architecture 200+ visitors



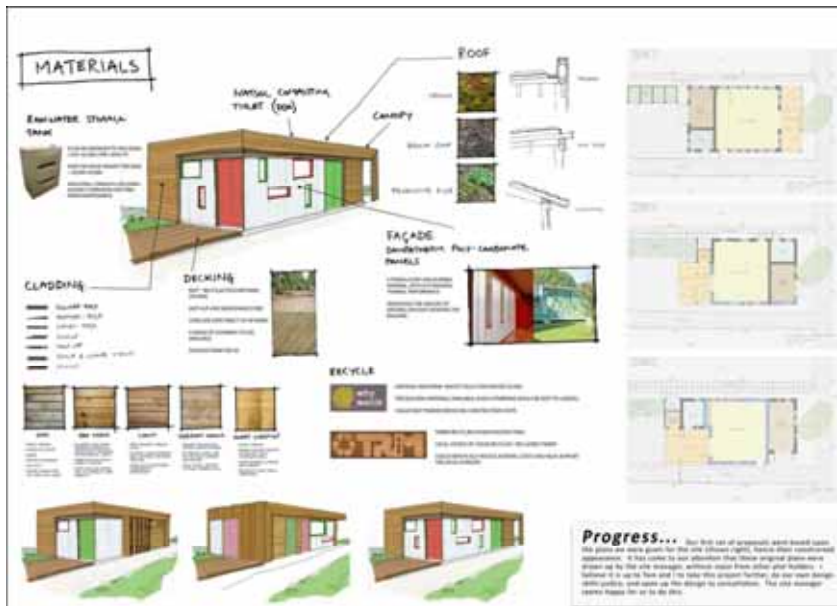
Public exhibition on Market street 400+ visitors





Our community





Project 6: Scott Avenue Allotments - 1st Proposal

Scheme A

The following two schemes were produced by Tom and I as a result of working to the design brief, written up from the idea Workshop.



Scheme B



Project 6: Scott Avenue Allotments - 2nd Proposal



SCOTT AVENUE ALLOTMENT SOCIETY PROPOSED BUILDING.

VIEW FROM THE MAIN ENTRANCE



VIEW ALONG SOCIAL SPACES



PROPOSED FLOOR PLAN 1:100

Feature Table

A feature table, located between the main entrance and the rear entrance, with a north arrow and a scale bar. It includes a north arrow and a scale bar.

Service

A 4m x 4m service area, located between the main entrance and the rear entrance, with a north arrow and a scale bar. It includes a north arrow and a scale bar.

Deliverable

A 4m x 4m deliverable area, located between the main entrance and the rear entrance, with a north arrow and a scale bar. It includes a north arrow and a scale bar.

Shed and Shop

A 4m x 4m shed and shop area, located between the main entrance and the rear entrance, with a north arrow and a scale bar. It includes a north arrow and a scale bar.

Shed and Shop

A 4m x 4m shed and shop area, located between the main entrance and the rear entrance, with a north arrow and a scale bar. It includes a north arrow and a scale bar.

Shed and Shop

A 4m x 4m shed and shop area, located between the main entrance and the rear entrance, with a north arrow and a scale bar. It includes a north arrow and a scale bar.

Shed and Shop

A 4m x 4m shed and shop area, located between the main entrance and the rear entrance, with a north arrow and a scale bar. It includes a north arrow and a scale bar.

Shed and Shop

A 4m x 4m shed and shop area, located between the main entrance and the rear entrance, with a north arrow and a scale bar. It includes a north arrow and a scale bar.

Shed and Shop

A 4m x 4m shed and shop area, located between the main entrance and the rear entrance, with a north arrow and a scale bar. It includes a north arrow and a scale bar.

Shed and Shop

A 4m x 4m shed and shop area, located between the main entrance and the rear entrance, with a north arrow and a scale bar. It includes a north arrow and a scale bar.

Shed and Shop

A 4m x 4m shed and shop area, located between the main entrance and the rear entrance, with a north arrow and a scale bar. It includes a north arrow and a scale bar.

SCOTT AVENUE ALLOTMENTS
PROPOSED NEW SOCIETY BUILDING
AGM 06/03/10

Project 6: Scott Avenue Allotments - 3rd Proposal



Big society



CITY GROWING

Urban Agriculture in Manchester

Introduction

33% of each UK citizen's CO₂ emissions are attributed to the production and transportation of food; our ecological footprint in the UK is three times what is required for an environmentally sustainable future; the UK construction industry is responsible for 44% of the UK's total CO₂ emissions.

We have responded to these issues using urban agriculture as a stimulus for architectural design, aiming to achieve both socially and environmentally sustainable results whilst developing a body of research.



The Toolkit

We produced the City Growing Toolkit to enable our research to be shared amongst other individuals and communities, both within Manchester and further afield.

The toolkit provides information on how to set-up an exemplar growing site or retrofit an existing one, and outlines methods of promotion and community engagement at different scales of affection. Below are key points taken from the kit that we have put into practice, by developing them as live projects within Manchester.

CITYGROWING.ORG



To promote our strategies for Manchester, starter kits were designed and sold at a 'Christmas market' workshop to encourage growing at home. These were made from recycled tin cans, cardboard and paper. A website was set up to help dispense and publicise our strategic propositions for Manchester whilst creating a hub for contact and feedback from the workshop prior to any funding being obtained.



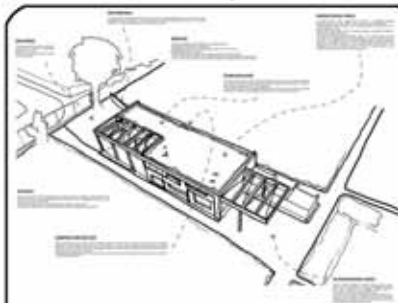
THE EDIBLE PAVILION



The Edible Pavilion is the centerpiece to the new community plot we designed and built in collaboration with Brighton Grove Allotments and the neighbouring St. James' C of E Primary School. The pavilion features green walls and rainwater collection, providing an outdoor classroom where the children can learn to grow fruit and herbs.



SCOTT AVENUE



A proposal for a new community facility at Scott Avenue allotments was worked up to Planning stage following the success of a new community garden at the site. This had boosted interest in further improving the current facilities and extending the scope for community engagement at the site, providing a workshop/teaching space and a shop among other amenities.



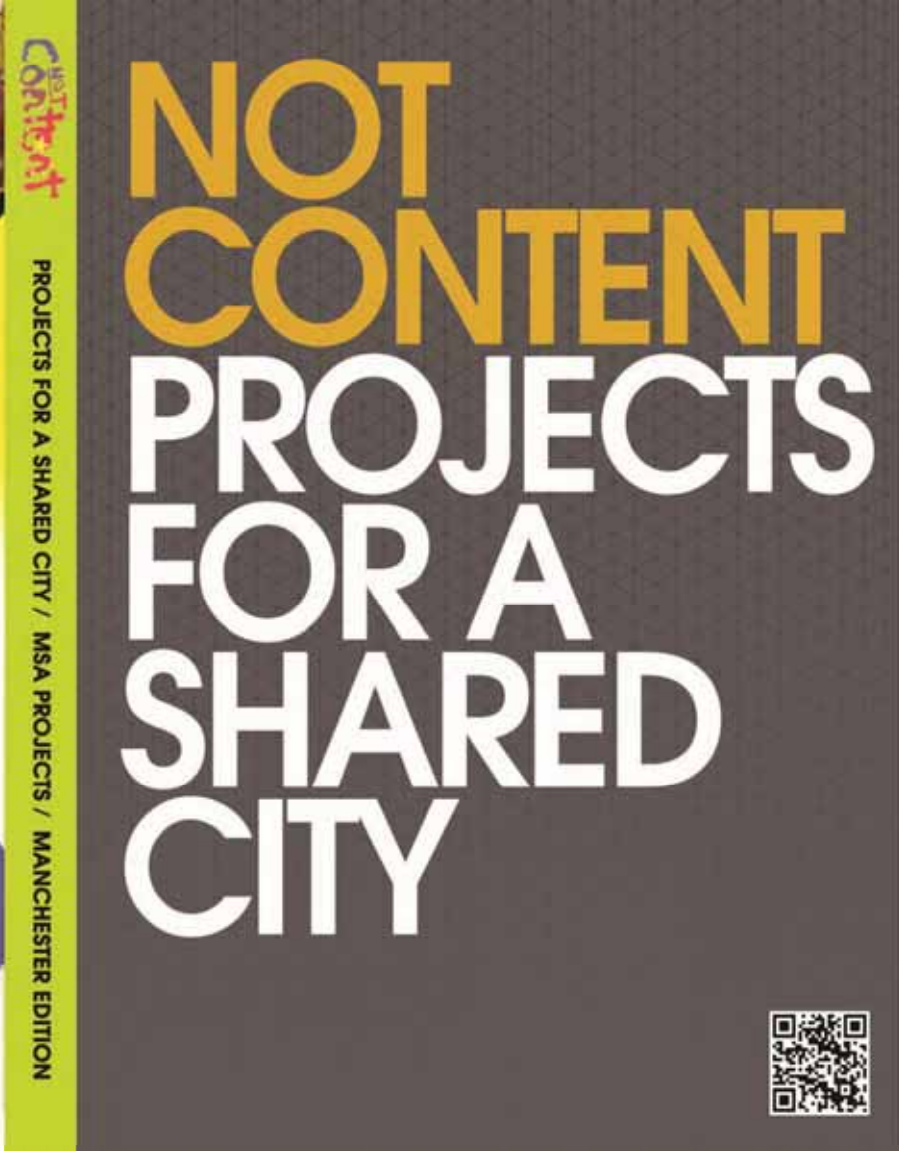
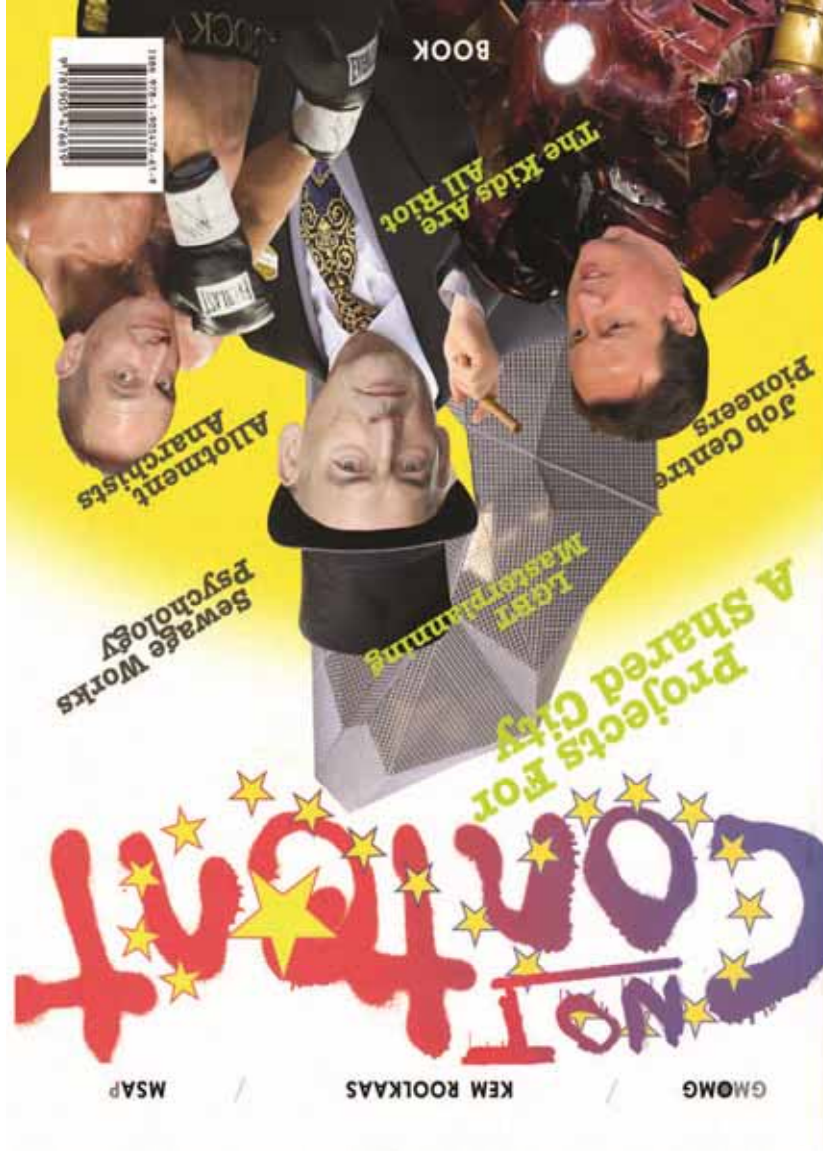
FOG LANE

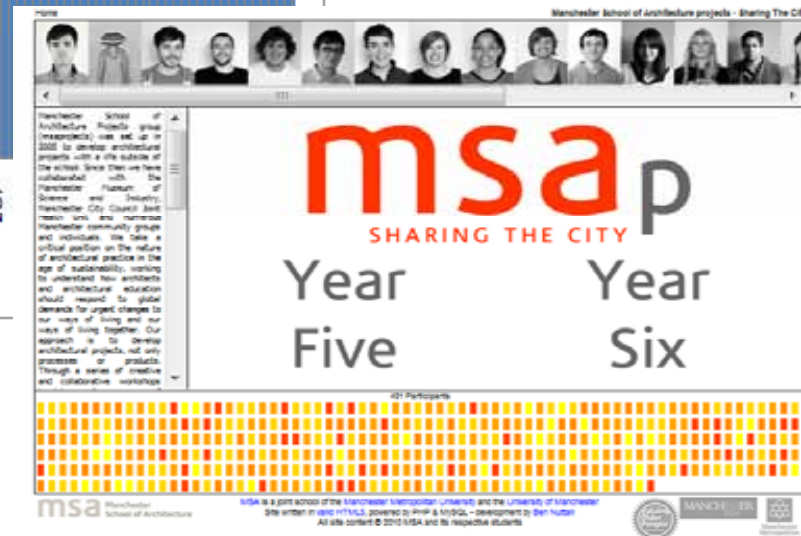
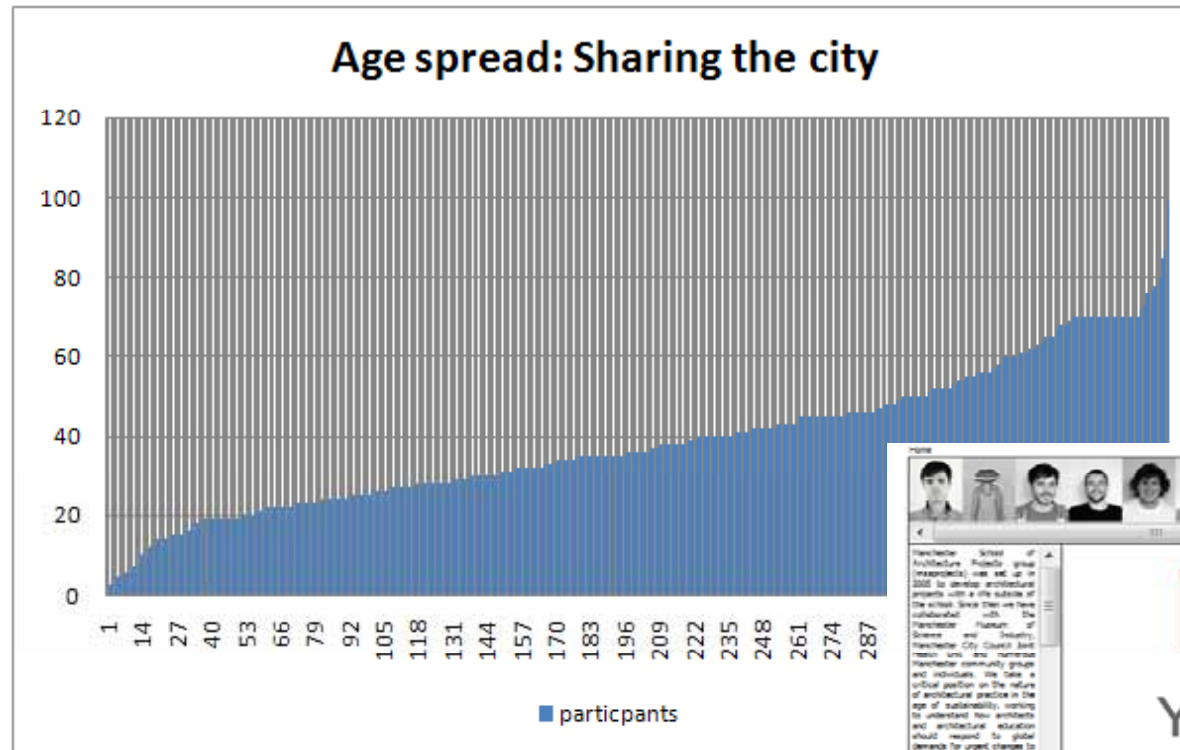
URBAN GROWING
EDUCATION SITE



Fog Lane is an educational site for urban agriculture and low-tech sustainable design. The masterplan combines a workshop facility with a 'composting city' demonstration tunnels, raised beds, cold frames and various growing patches for adult learning and school groups. The site is under construction.







www.sharingthecity.org.uk

Studio

Unit research

- Inclusive urban design
- Bids to ESRC, MICRA, AHRC and EU
- Developing Collaborative partnerships etc.



ESRC

Polaris House, North Star Avenue, Swindon, Wiltshire,
United Kingdom SN2 1UJ

Telephone +44 (0) 1793 413000

Web <http://www.esrc.ac.uk/>

COMPLIANCE WITH THE DATA PROTECTION ACT 1998

In accordance with the Data Protection Act 1998, the personal data provided on this form will be processed by ESRC, and may be held on computerised database and/or manual files. Further details may be found in the **guidance notes**

Seminars PROPOSAL

Document Status: With Owner

ESRC Reference:

International Partnership and Networking 2011

Organisation where the Grant would be held

Organisation	Keele University	Research Organisation Reference:	4355
Division or Department	Inst for Life Course Studies		

Project Title (up to 150 chars)

Population ageing and Urbanisation: Developing Age-Friendly Cities

Start Date and Duration

a. Proposed start date

01 April 2012

b. Duration of the grant (months)

24

Applicants

Role	Name	Organisation	Division or Department
Principal Investigator	Professor Christopher Phillipson	Keele University	Inst for Life Course Studies
Co-Investigator	Mr Stefan White	Manchester Metropolitan University	The Manchester School of Architecture
Co-Investigator	Professor Thomas Scharf	National University of Ireland Galway	Economics
Co-Investigator	Professor Dominique Verte	Free University of Brussels (VUB)	Unlisted
Co-Investigator	Dr Jessica Kelley-Moore	Case Western Reserve University	Unlisted
Co-Investigator	Mr Paul McGarry	Manchester City Council	Joint Health Unit
Co-Investigator	Professor David Rosser Phillips	Lingnan University	UNLISTED
Co-Investigator	Dr Fleur Thomese	VU University Amsterdam	UNLISTED

Classification

International in nature?

☒ Yes

Please give details

Sharing the city: Principles

Inclusive urban design –

- increases the capability to share space**
- enables spatial negotiation – involves knowledge**
- understands Community as having both social and environmental components – specificity**
- relates behaviour to place – understanding capacity**
- Understands design as facilitating social and physical capacities**

Academic background:

This position understands place as practiced space (Lefebvre, Massey et al.)

Give a value to social labour (Affective labour – Hardt et.al)

Approaches inclusion from a principle of difference rather than from a principle of identity and understands desire as a situated, territorial phenomenon (Deleuze)

Workshop continuing from Sept 29th

- 5 actions/questions from September 29th 2010
- Pursue projects
 - Identify places/spaces in Manchester where Age Inclusive design projects could be carried out. This includes options such as Life-time neighbourhoods work, Enquiry by Design and Planning for Real pilots
 - Links to existing projects and areas, the needs of specific groups, provide assistance to existing campaigns
- Know more
 - Develop a funding bid to support a programme of Age Inclusive design projects
 - What are the key research questions, what do we need to know and how can our research support or combine with our other issues, what knowledge do we need to gain?
- Advocate inclusion
 - Develop a learning network across Manchester/UK to develop understanding and learning from this work with an aim to develop this into an Inter-Agency Group to fight for Age-Inclusive Design
 - How can we build the community of interest locally, nationally and internationally? How can we share knowledge, and what do we need to share/
- Our community
 - Build on the Manchester Generations Together legacy to develop more Intergenerational activities with more Intergenerational use of spaces/places and inter-generational ownership of spaces/places
 - How can we act to support our existing communities and ensure that we involve people of all ages, attitudes and occupations?
- Big society
 - Develop community engagement processes to replace short-term consultations with long-term conversations within an Age Friendly context. This includes planning, regeneration, redesign of spaces and wider community engagement
 - How can we actively and positively engage with our planning departments officers and policies to help ensure our cities are shared? Do we need to engage other issues such as the big society?



