

Q-Step Internship: New Economy - Domestic Migration in Greater Manchester

James Montgomery, Politics and International Relations



New Economy are the research, strategy and policy department for the Greater Manchester Combined Authority and Greater Manchester Local

Enterprise Partnership. Their main objective is to ensure economic growth and prosperity for all 10 of Greater Manchester's districts.

Objectives

The aim of my main project was to analyse a public 2015 ONS dataset on domestic migration within the UK and to summarise the key findings of domestic migration in Greater Manchester. The dataset is based on estimates gathered from the NHS patient register, NHS central register and the Higher Education Statistics Agency. The data presents the number of moves from one specific local authority to another, by age and sex. Moves within a local authority are not included.

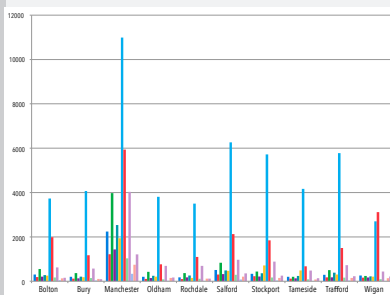
Method

Given this is UK wide data, the dataset was so large it could not fit on to one Microsoft Excel sheet. Therefore I had to cut down the data into the relevant Greater Manchester districts before I could start. Once cut down to one data-sheet, I had to convert the Local Authority Codes into regions and districts. To

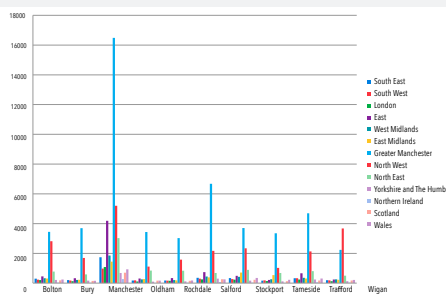
do this I downloaded a list of Local Authority Codes and their respective region and district and learnt how to perform a vlookup to convert them. Due to high numbers of moves within Greater Manchester, I extracted the Greater Manchester moves out of the North West region; creating a Greater Manchester region and a North West (excluding Greater Manchester) region. Now presented with a large list, I created a pivot table to group the districts and regions together. From these I was able to repeat the process varying age brackets and specific locations, as well as comparing inbound and outbound data.

Key Findings

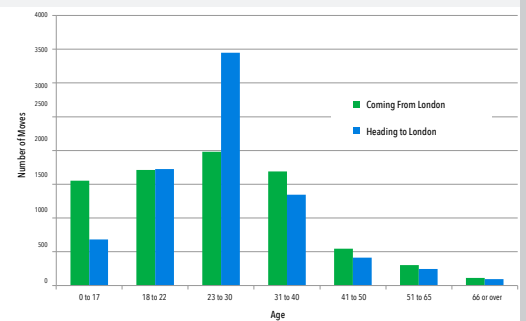
Generally I have found Greater Manchester to be a fairly insular region, with 43% of moves occurring between Greater Manchester districts. Similarly the North West is the 2nd highest destination to move from or move to, ranking up 17% and 20% of moves respectively. There are also significant variations between the districts. Manchester is by



Moves into Greater Manchester, 2015 ONS



Moves out of Greater Manchester, 2015 ONS



Moves to and from London, 2015 ONS

far the most mobile district; with 20% of inbound migrants coming from the South West, South East and London, compared to 10% for the rest of Greater Manchester. Bolton, Bury, Rochdale, Oldham, Tameside and Wigan are significantly less mobile than Manchester, Salford, Stockport and Trafford; with the former attracting just 38% of new migrants despite constituting 53% of Greater Manchester's population. Wigan is particularly different as it is the

only district in Greater Manchester where you are more likely to move to or come from the rest of the North West than Greater Manchester. I also found that the same number of people leave for London as Greater Manchester gains from London, except those coming from London are more likely to be older and bring their children.

Conclusion

- Greater Manchester is a pretty insular region, with the majority of moves in and around Greater Manchester or the North West
- Manchester is by far the most mobile borough, whilst Wigan especially is much more insular and has greater connections to the North West than Greater Manchester
- Greater Manchester is not losing or gaining vast amounts of people from London, however those coming in from London are older than those leaving.