

*Llyn Trawsfydd*

Arenig Fach  
(889m)

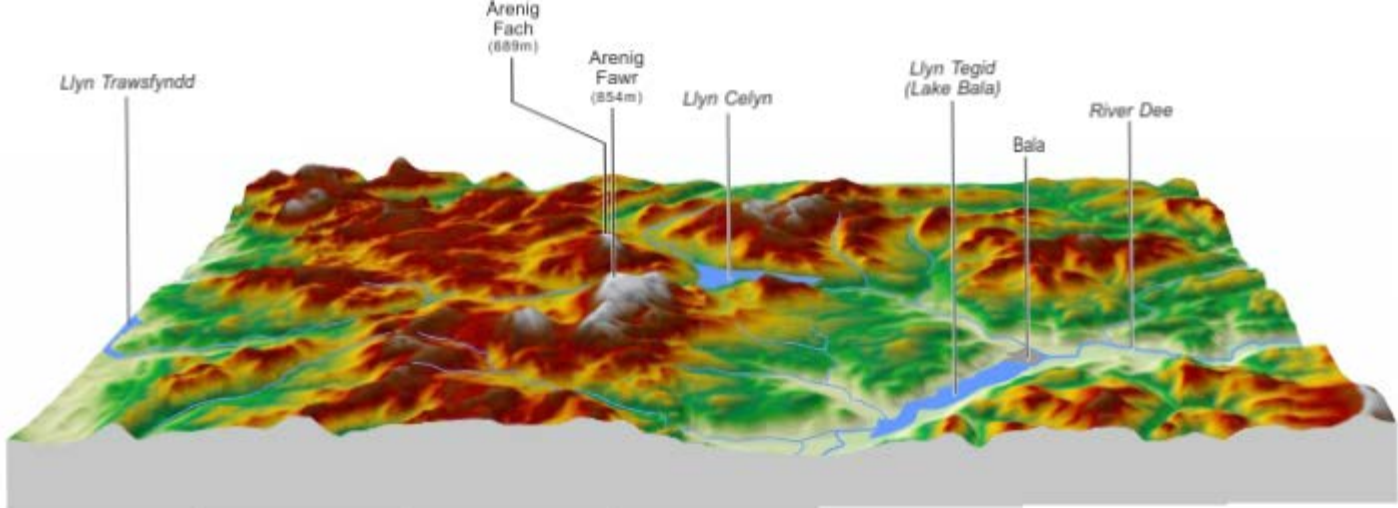
Arenig Fawr  
(854m)

*Llyn Celyn*

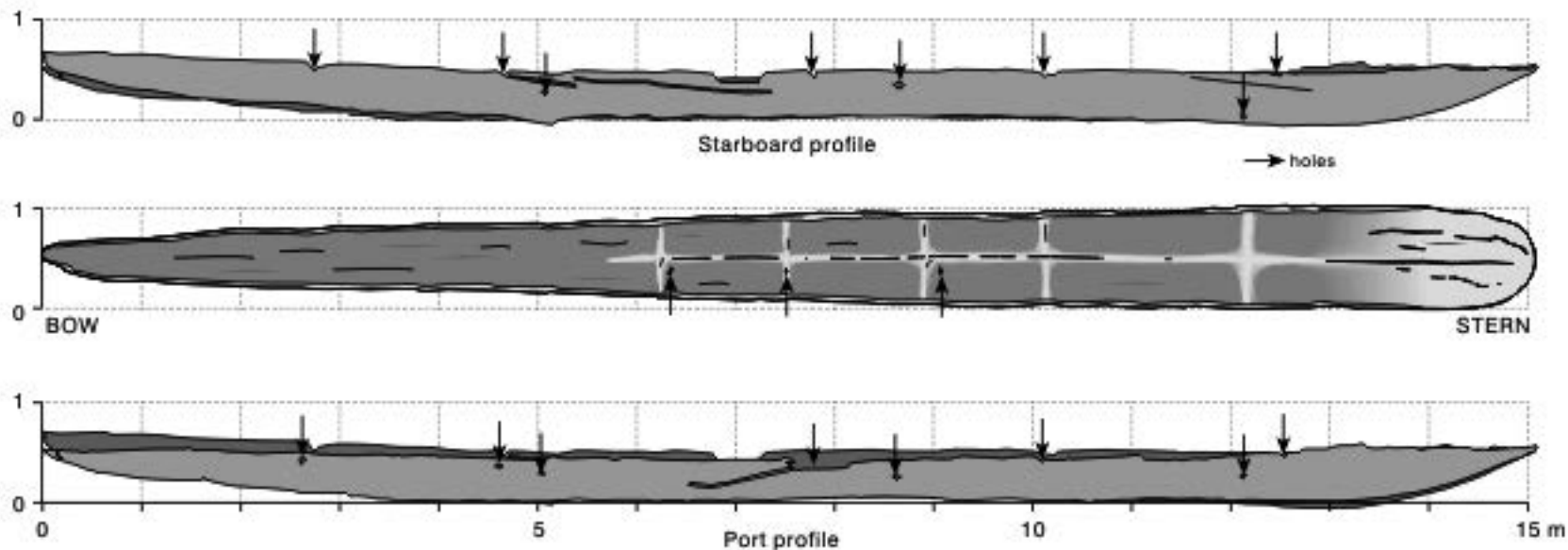
*Llyn Tegid  
(Lake Bala)*

*River Dee*

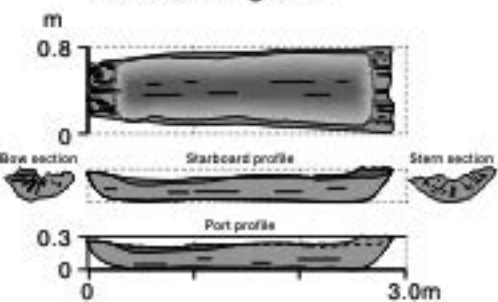
Bala



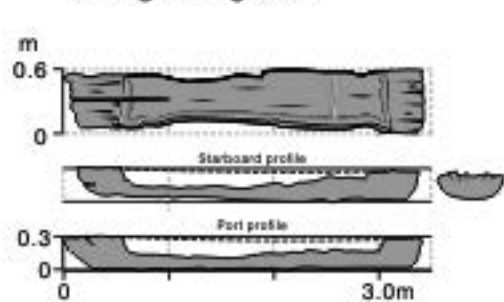
### Lurgan Logboat



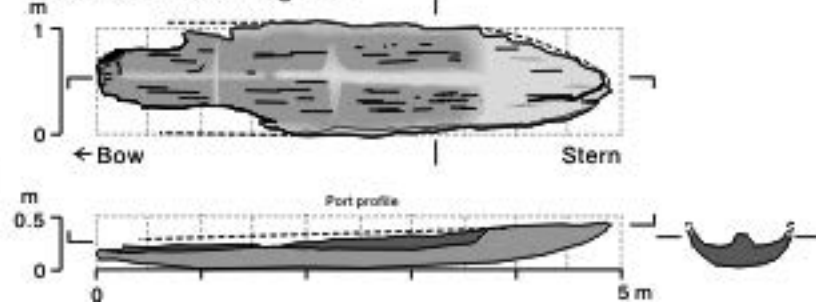
### Cuilmore Logboat



### Tonregee Logboat



### Carrowneden Logboat







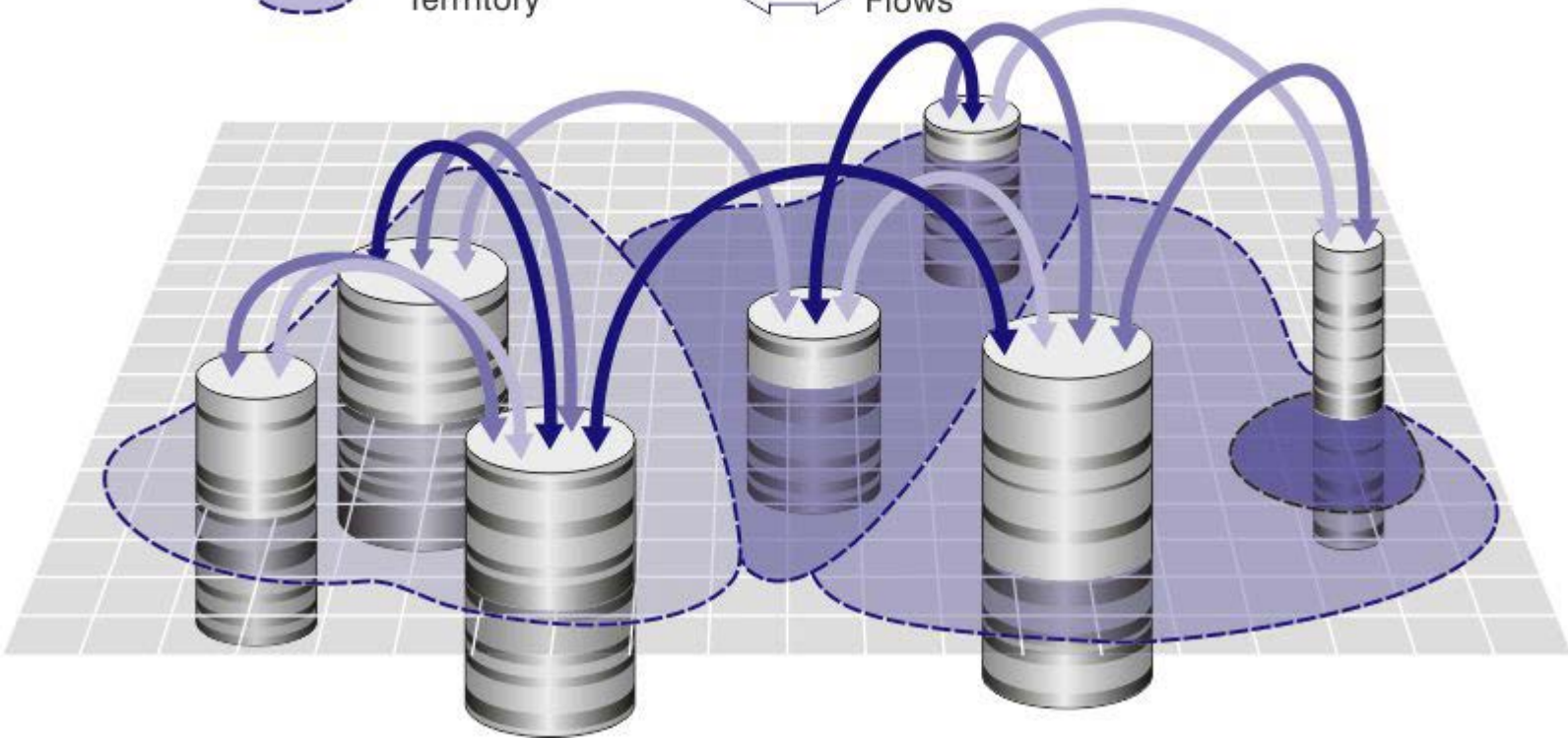
0 100 mm





Absolute space  
Territory

Place  
Flows

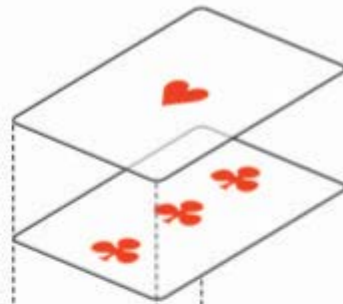
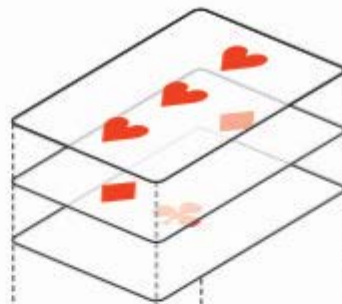
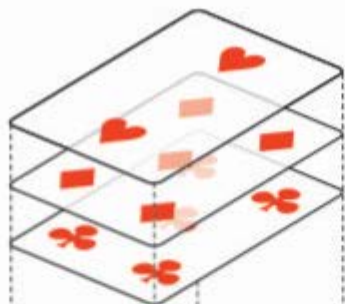


Region A

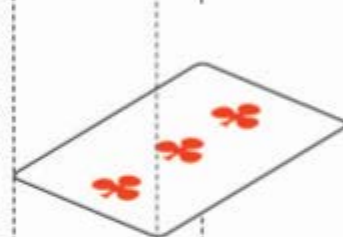
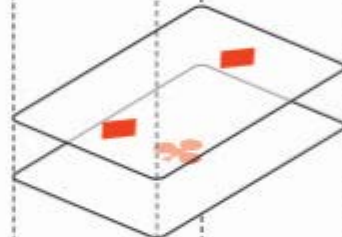
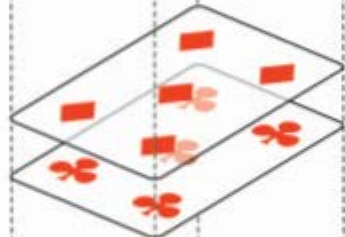
Region B

Region C

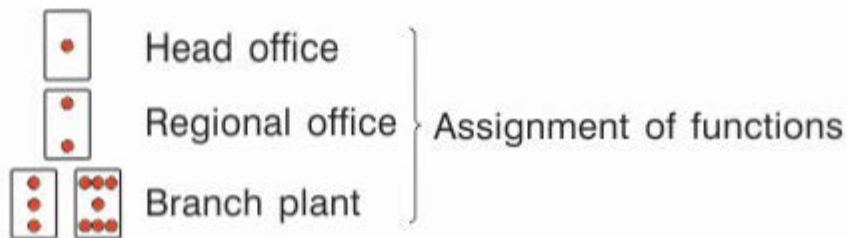
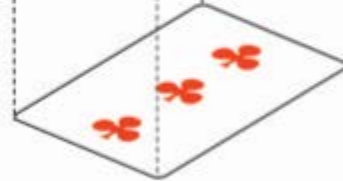
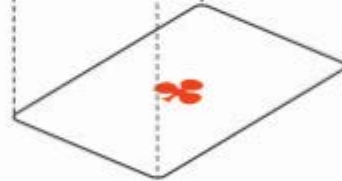
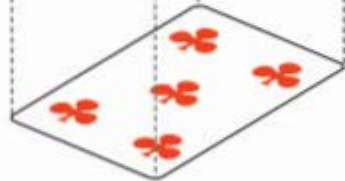
Round of investment  $t_3$



Round of investment  $t_2$

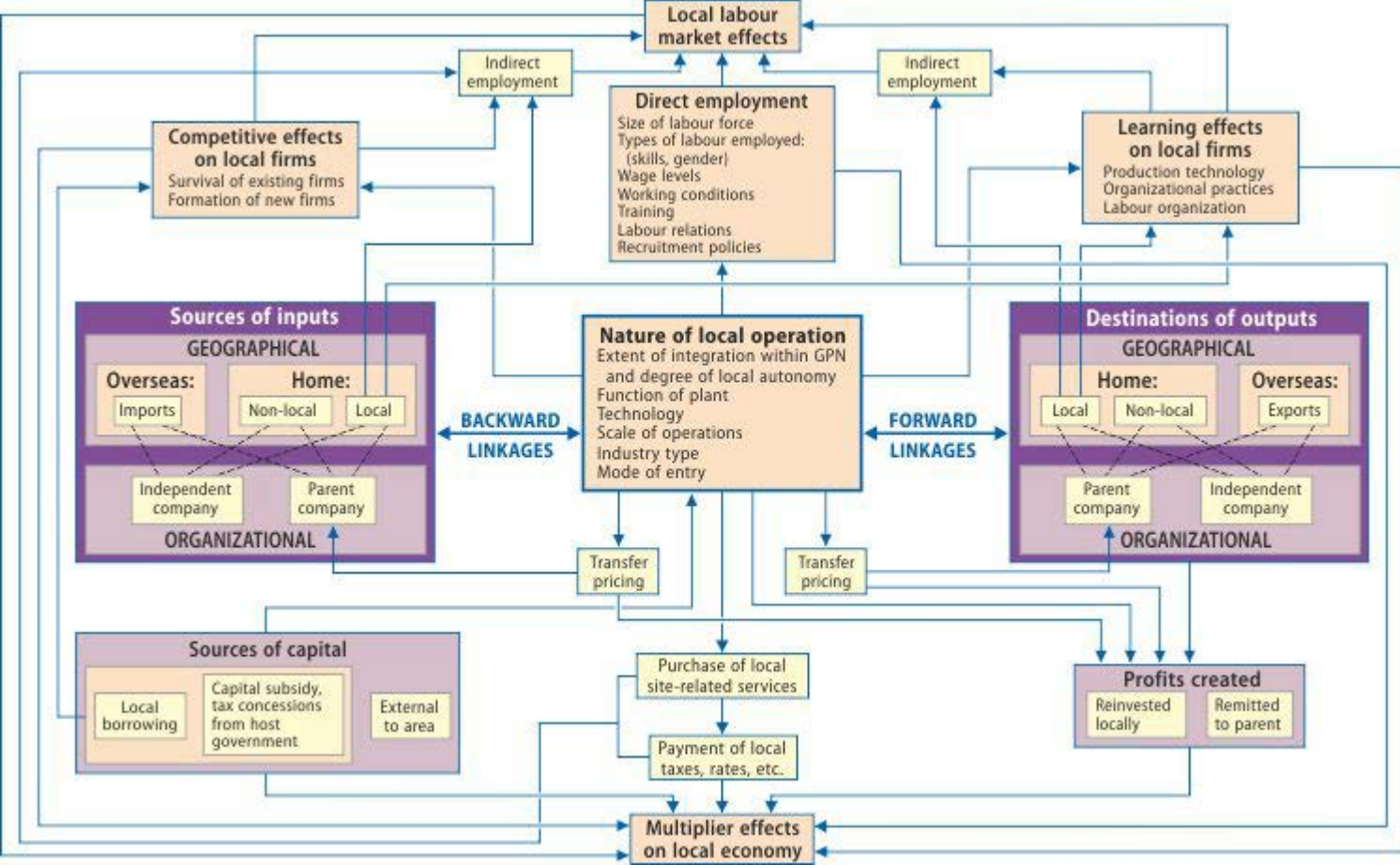


Round of investment  $t_1$









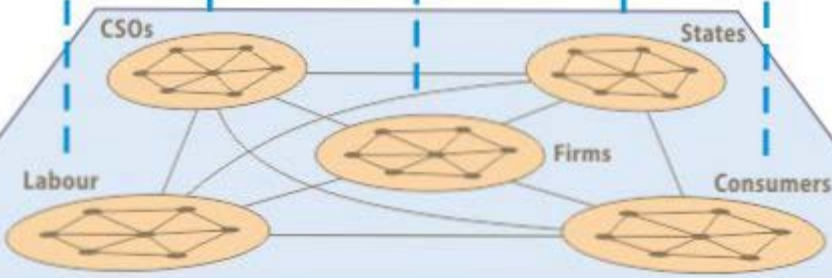
PROCESSES ← → OUTCOMES



"Variegated capitalisms" –  
geographically-specific configurations  
of socio-cultural practices and institutions

Macro-structures (institutions, conventions etc.)  
of capitalist market system

*Processes of 'embeddedness'*



Circuits and networks of interaction, mediated through differential power relationships  
in global production networks and through transnational social networks

*Processes of 'embeddedness'*



Uneven geographical distribution of 'goods' and 'bads';  
'winners' and 'losers'

**SPACE – TIME PROCESSES**

- Evolutionary trajectories: path dependency/contingency
- Space as 'relational' (topological/multiscalar)

