

Your visit to the Martin Harris Centre



A visual guide

Welcome to the Martin Harris Centre



Where is the Centre?

The Martin Harris Centre is in The University of Manchester campus near Manchester city centre.



Arriving at the Martin Harris Centre



The Martin Harris Centre has two entrances.

You might enter from Bridgeford Street:



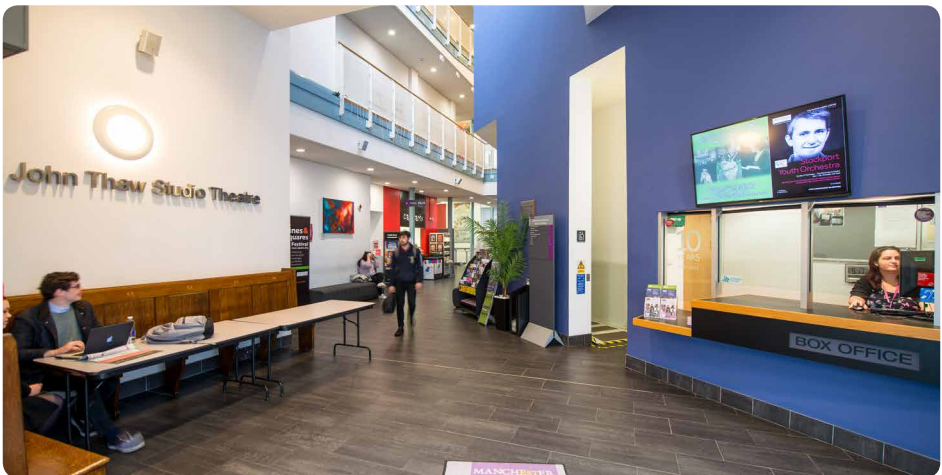
Or you might enter from Coupland Street:



The foyer



When you come into the Martin Harris Centre you will be in the Foyer. It looks like this:

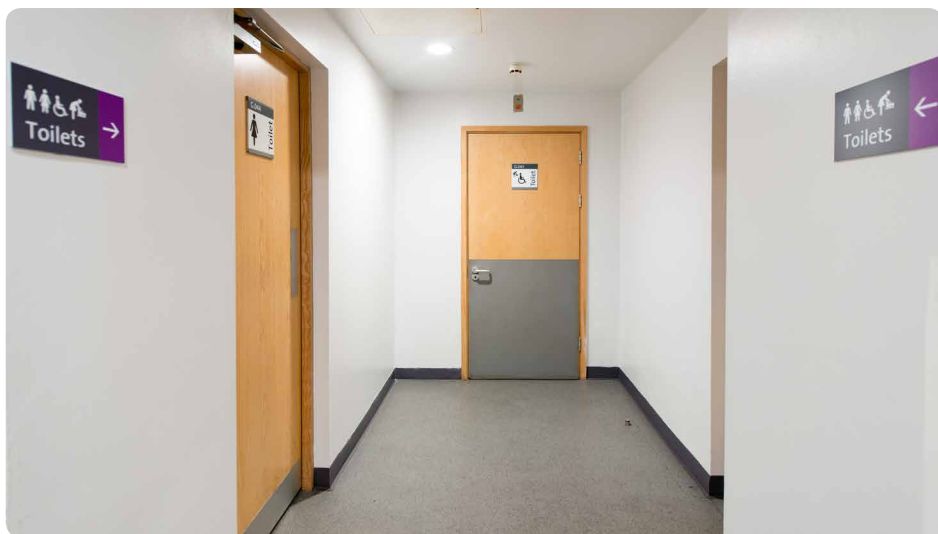


Sometimes the Foyer is very busy before a show because people wait here to go into the Concert Hall or Studio Theatre.

Toilets



If you need to go to the toilet there are toilets near the cafe.
They look like this:



Food and drink



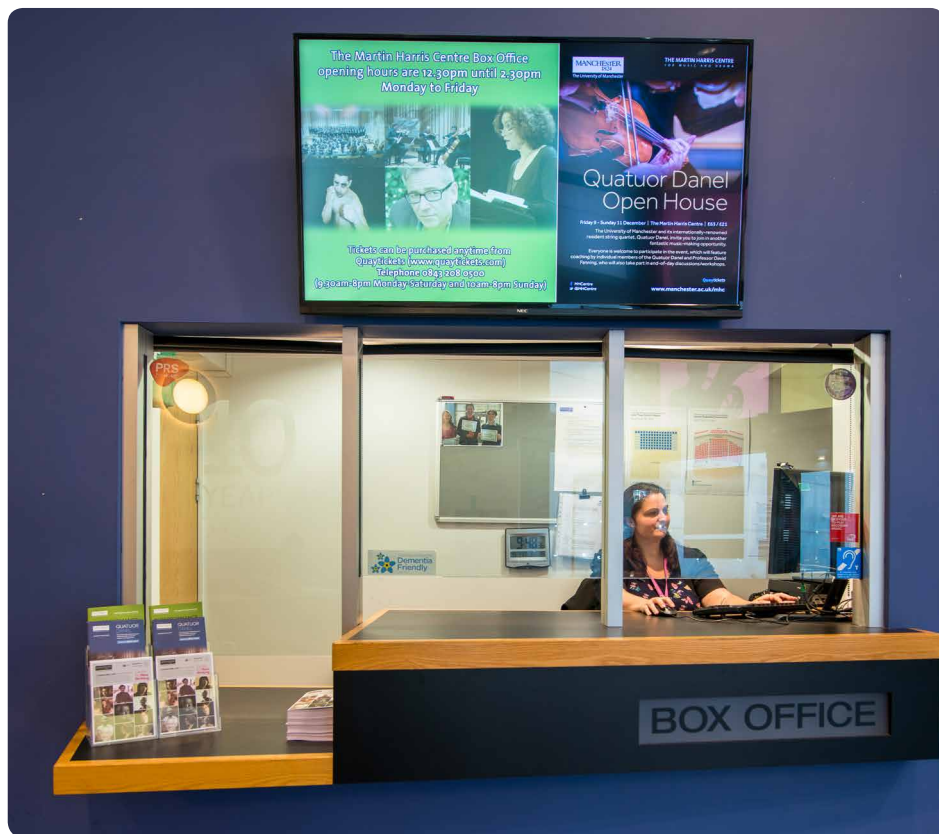
If you want to buy any hot drinks, cold drinks or snacks you can buy them from the cafe:



Collecting tickets



If you are going to see a show you might need to buy or collect your ticket. To do this, go to the Box Office and a member of staff will help you:



Asking for help

If you need any help you can always ask one of the Martin Harris Centre staff members. They will be wearing purple or black T-shirts with Staff written on the back. They are very friendly and can help you if you are worried or have any questions.

Going into the theatre

There are two different performance spaces in the Martin Harris Centre:

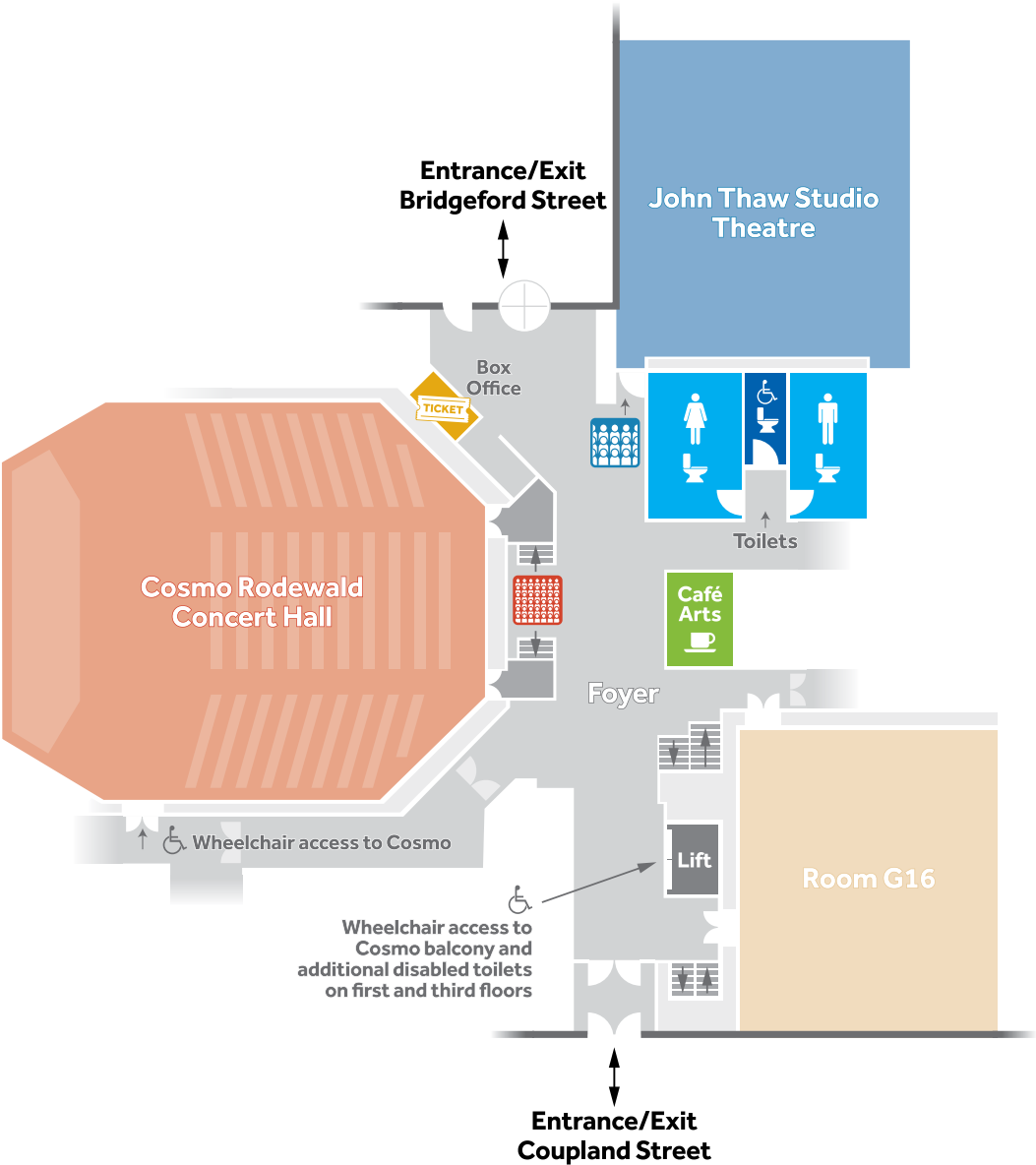
The Cosmo Rodewald Concert Hall



and the John Thaw Studio Theatre



Map of the Martin Harris Centre



Going to see a show in the Cosmo Rodewald Concert Hall



If you are going to see an event in the Concert Hall, you will need to go inside the Concert Hall before it starts.

If you are sitting downstairs, you will need to go through one of the main doors. You can enter either of the doors:



If the event is very busy then you may be asked by a staff member to sit upstairs in the balcony. You will need to go in the lift to the first floor and through a doorway like this:



The Martin Harris Centre staff will help you if you are not sure where to go.



A member of staff will help you find your seat. If your ticket has a seat number on it, there will be a seat with a matching number. Seat numbers look like this:

Some events are unreserved, which means you can sit anywhere you would like.



Inside the Concert Hall it looks like this:



Going to see a show in the John Thaw Studio Theatre



If you are going to see a show in the Studio Theatre, you will need to go inside the Studio Theatre before it starts.

You will need to enter through the door that looks like this:



The Martin Harris Centre staff will help you if you are not sure where to go.

The seats in the Studio Theatre are unreserved, which means that you can choose to sit anywhere you would like. The seats look like this:



Inside the Studio Theatre it looks like this:



The performance

Start of the performance

The start time for the performance will be written on your ticket.



You will know that the event is about to start because you will hear an announcement over the tannoy telling you when there is five minutes, three minutes or one minute until the start.



Middle of the performance

In the middle of the performance there may be an interval. This is so the performers and the audience can have a rest. The interval will last for about 20 minutes. You can find out if there is an interval from staff or the programme.



The lights will get brighter and you can leave your seat to get a drink or to go to the toilet.



You will know that the performance is about to start again because you will hear a staff member making an announcement over the tannoy asking you to take your seat again.



During the performance

Laughing

During the performance the performers or conductors might make a joke. Some of the audience may laugh. You can laugh too if you want to.



Clapping

During the performance some people might clap to show that they are enjoying themselves. You can clap too if you want to.



If the clapping is too loud you can cover your ears.

The end of the performance

You will know that it is the end of the performance because the performers will take a bow.



There will be lots of people leaving the performance at the end so it might be quite busy in the Foyer again.



THE MARTIN HARRIS CENTRE
F O R M U S I C A N D D R A M A

The Martin Harris Centre for Music and Drama
The University of Manchester
Bridgeford Street, off Oxford Road
Manchester M13 9PL

Telephone: 0161 275 8951

Email: boxoffice@manchester.ac.uk

Online tickets: www.quaytickets.com

www.manchester.ac.uk/mhc

 MHCentre

 @MHCentre



Royal Charter Number RC000797
DW3193.12.16