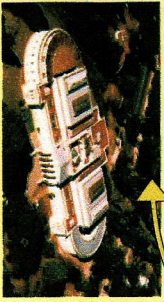




A century of museographic changes at a natural history museum in the South *

MURRIELLO, Sandra E. - UNICAMP-
Brazil - sandramu@gmail



Museo de La Plata

(Province of Buenos Aires, Argentina)

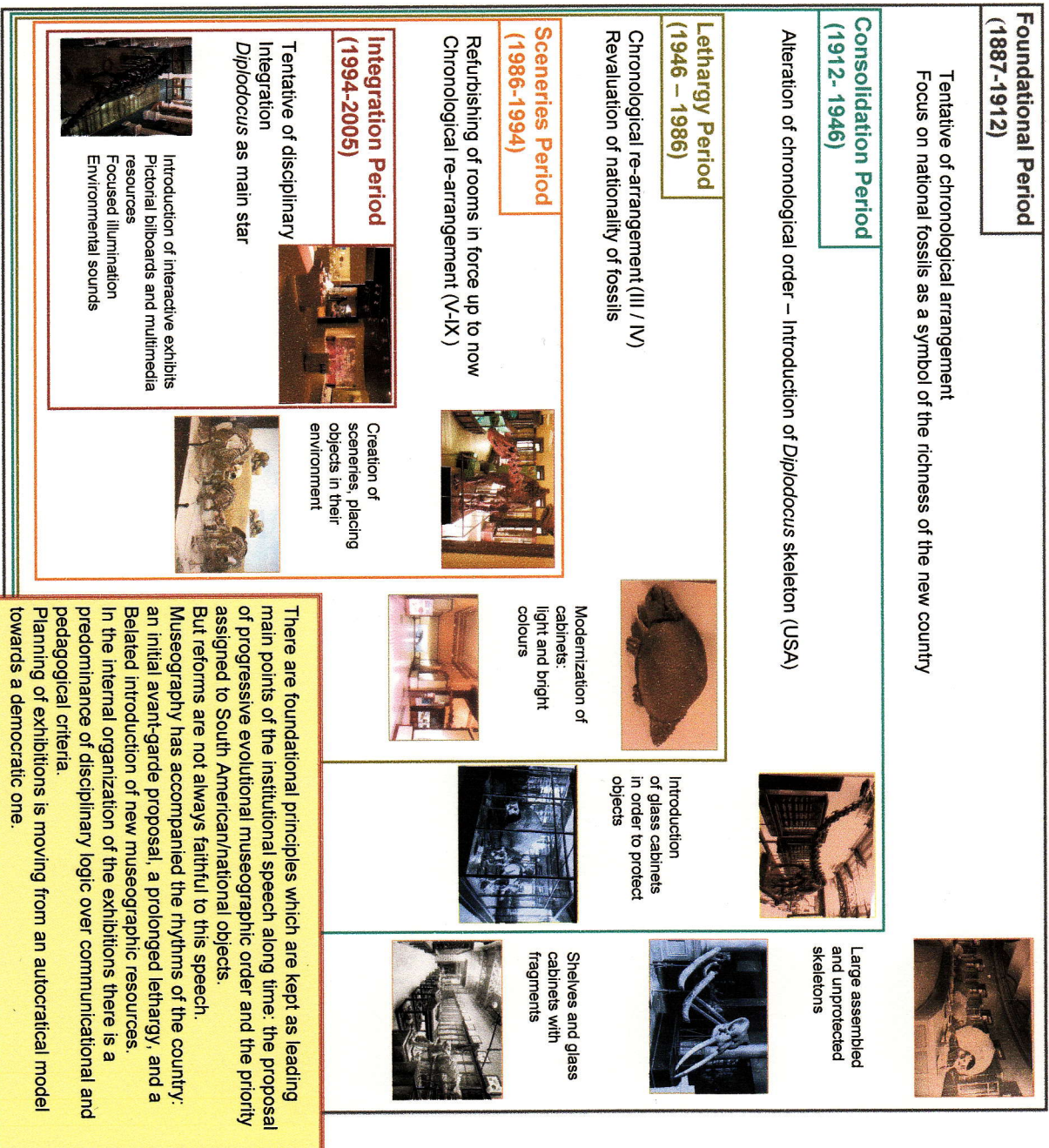
- Natural History Museum created at the end of the nineteenth century
- Evolutionary-progressive narrative collections, especially the Quaternary South American mammals.
- 7 Paleontological rooms in the ground floor (III - IX)

The museographic changes of the paleontological exhibitions of the Museum during the last century were analyzed based on written and photographic documents and on oral interviews to key actors.

A five-period organization is proposed considering different factors -- political, institutional, ideological, educational, esthetic, scientific, etc.-- which conform different frames for the museological development.

Museographically, changes are always partial and maintain characteristics of the previous period.

D I S C I P L I N A R Y F O C U S T H E M A T I C F O C U S



* Based on the theses defended at Departamento de Geociências Aplicadas ao Ensino, Instituto de Geociências, UNICAMP- Campinas, São Paulo, Brazil. January, 2006. Under the direction of Dra. Maria Margaret Lopes.