

MANCHESTER
1824

The University of Manchester

Postgraduate Studies 2017



School of Law

Welcome

By choosing a postgraduate degree at the School of Law, you will be joining a collective of internationally-recognised scholars who are tackling some of the most complex problems facing society.

Our degrees are based on real world needs and bring current legal, social and ethical issues into classroom teaching and discussions. Our academic leaders help inform the legal system through evidence-based research, making an impact on crime policy, law and justice and health care.

We advise Parliamentary committees and Government departments in diverse areas, including cyber security, drugs, violence, corporate governance and health. We work closely with employers from a broad range of sectors to equip you with the relevant skills to pursue a range of professions, within the field of law and beyond.

We have an international perspective; our links with overseas organisations allow you to encounter the impact of our specialisms around the world.

We look forward to welcoming you to Manchester.



Professor Toby Seddon,
Head of School



Living in Manchester

We are proud to call Manchester our home and around a third of our students decide to stay in Manchester once they graduate. With a rich history shaped by industrial revolution, labour movements and artistic creativity, Manchester's strong, pioneering character endures to this day.

This unique character certainly does not exclude the city's legal reputation. The city of Manchester is the second biggest legal hub in the UK, meaning it is the perfect location for a Russell Group law school and our students are well placed within the legal world.

The University of Manchester's close proximity to the city and ties to local communities provides you with ample opportunity to gain real world experience while studying at a prestigious law school. University of Manchester students can work with a wide range of local legal centres and many of our students have worked closely with law firms in the city.

Our connections with law firms such as Linklaters, Clyde&Co, and, among others, Eversheds means our students can work with established legal practitioners gaining new networks and extensive experience in the legal world.



"Manchester has a long and proud history of producing strong leaders who have fought for our rights and the rule of law – a fight that's more critical today than ever."

Shami Chakrabarti



Accommodation

As a University of Manchester student you will not only live in the heart of one of the liveliest cities in the country but you'll also have the opportunity to live in University halls of residence known for their community feel.

Our huge accommodation offering has multiple options for any budget and we'll do everything we can to help you find somewhere to live where you'll feel at home.

- There are a wide range of options available to students including:
- Postgraduate-only accommodation
 - Single or mixed gender accommodation
 - Catered or self-catering facilities
 - Shared or en-suite facilities
 - Specially adapted rooms for students with disabilities
 - Accommodation for families and partners

Manchester also has plenty of private accommodation available for rent – contact Manchester Student Homes for further information. Jointly owned by the Manchester universities, this is the city's only housing bureau that advertises university-approved accommodation. Accommodation in Manchester is relatively inexpensive and is never far from a regular bus service to the main University campus.

Contact our Accommodation Office:
+44 (0)161 275 2888
accommodation@manchester.ac.uk
www.manchester.ac.uk/accommodation

Contact Manchester Student Homes:
+44 (0)161 275 7680
manchesterstudenthomes@manchester.ac.uk
www.manchesterstudenthomes.com



Careers and employability

Throughout your studies at Manchester we offer a range of support and events to help you to consider and research your options.

As a University of Manchester School of Law postgraduate, a wide range of exciting careers are within your reach.

You could become a high profile specialist in fields as diverse as finance, healthcare, criminal justice, business, central government and, of course, the legal profession.

We work closely with the University's award-winning Careers Service to provide bespoke support for our postgraduate students, from discovering different career paths to securing your ideal job. From Law career fairs and skills development workshops to dedicated law careers consultants and comprehensive resources, you'll be sure to gain a first-rate experience from Manchester.

Various employers participate in on-campus presentations, talks and workshops, and mentoring schemes which enable you to learn about your ideal job from an expert currently working in the same field.

Along with these expert services, the School of Law also offers plenty of opportunities to gain key skills to improve your employability.



Legal Advice Centre

Our innovative Legal Advice Centre was the first in the country and enables you to gain unrivalled insight into what it means to practise law. You will provide free, confidential legal advice to members of the public under the supervision of law practitioners and academics from the School of Law.

This experience allows students to play a part in filling the gap in the provision of local legal services and to become a part of the community legal services network, both funded and voluntary, in the North West. If there is a particular area you are interested in developing further, you can volunteer for relevant clinics to gain specific knowledge.

Volunteering at the Legal Advice Centre is a great way to not only develop your practical legal skills, but also show future employers your commitment to the legal profession and social responsibility, which can really make you stand out when applying for jobs.

Find out more:
www.law.manchester.ac.uk/lac



Fees and funding

Your fees will cover the cost of your study at the University, as well as charges for registration, tuition, supervision, examinations and graduation (excluding graduation robe hire). Fees vary for each postgraduate course.

Payment of tuition fees will also entitle you to membership of The University of Manchester Library, the Students' Union and the Athletic Union.

The fee for each course or programme can be found on the course information pages – please see:

www.law.manchester.ac.uk/pgt
www.law.manchester.ac.uk/pgr



Funding

Postgraduate loans (PGL) for taught and research master's students

In 2015, the UK government confirmed that Postgraduate Loans (PGL) of up to £10,000 will be introduced for UK/EU students commencing taught and research master's courses in the 2016/17 academic year.

This loan is:

- a contribution towards the cost of study, to be used towards tuition fees, maintenance costs or other costs;
- non-means-tested;
- paid directly into your UK bank account.

For further information about the PGL, including personal and course eligibility criteria, repayments and the applications process, visit: www.manchester.ac.uk/postgraduateloans

The School of Law also offers a range of funding opportunities for students continuing their education with a taught postgraduate master's course.

Master's course funding opportunities include scholarships for Law, Criminology and, Healthcare Ethics and Law students.

For further information on master's funding opportunities across the School and the University please visit: www.law.manchester.ac.uk/fees/postgraduate-taught/

Research programmes

The School of Law is committed to supporting postgraduate research students. Each year we invest substantially in doctoral funding.

In addition to these internal funds, the University is highly successful in attracting sponsorship for research students, from research councils, industry, trusts and charities.

Students may also be entitled to a University bursary, scholarship or studentship to support you through your studies.

There are numerous different opportunities available; please see our funding pages at: www.law.manchester.ac.uk/fees/postgraduate-research/

For further information and eligibility criteria for all postgraduate courses and programmes contact:

Postgraduate Admissions Office The School of Law

Taught courses

pg-law@manchester.ac.uk
Tel: +44 (0)161 306 1270

Research programmes

research-law@manchester.ac.uk
Tel: +44 (0) 161 306 1279



Postgraduate study

Like many prospective postgraduate students, you probably already have a clear idea of what you want to study and the themes you are interested in.

Set in the second largest legal hub in the UK, the School of Law offers you a superb option for continuing your education. We offer innovative training, supervision and facilities, alongside dedicated forums for research exchange. You will pursue intellectually challenging projects within a nurturing and vibrant environment.

As well as the intensive programme of career-related activities we run at the University, you can also get involved in mentoring opportunities, pioneer your own group and series of events, or start your own initiative.

You will be part of a diverse, interdisciplinary postgraduate community and with a culture of collaboration you will be able work with inspiring minds across the University, finding solutions to global challenges.

The School of Law:

- works in partnership with institutions outside the higher education sector to enable our postgraduates to produce research with a wider relevance and to develop their knowledge and expertise;
- is dedicated to shaping policy-making and practice in diverse areas, from national healthcare guidelines, to influencing police procedures in countries such as Norway, Australia and Brazil.

Our taught postgraduate courses include classes run by Manchester academics and a programme of assessed work. These are particularly suitable if you want to gain specialised knowledge in your chosen subject area. You may continue your studies in order to pursue an academic career, or go on to specialise in your chosen field.

As a postgraduate researcher at Manchester, you will undertake independent research under the supervision of a senior academic, contributing to the body of professional knowledge in your specialist area. Our dedicated researchers are among those tackling some of the most challenging issues facing societies in the twenty-first century.



Postgraduate taught courses

Corporate Governance LLM

12 months full-time

The LLM Corporate Governance is taught by Manchester's corporate governance and corporate social responsibility experts, and will provide you with specialist knowledge about the law of conducting business in today's global society.

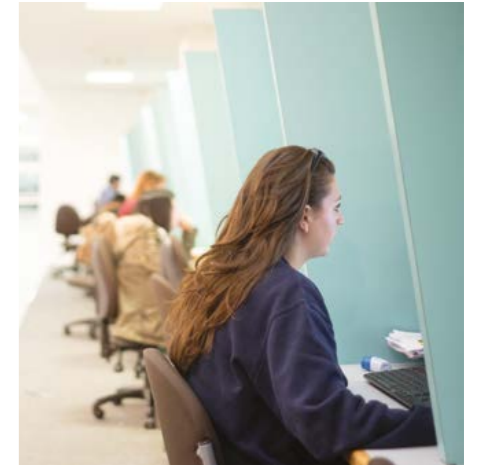
This course examines the major theories concerning the nature of corporations, the concerns driving corporate governance law and practice, and reform proposals. You will evaluate the effectiveness of current corporation governance processes in setting and pursuing objectives, both nationally and internationally. In addition, you will develop your skills by examining the evidence for European and global convergence of corporate governance practices and the ways in which this might evolve.

Criminology MA

12 months full-time
27 months part-time

The MA Criminology allows you to develop specialist knowledge of the current trends and historical debates surrounding crime causation, crime control and regulation. The course equips you with the intellectual, critical and analytic skills needed for understanding and applying criminological theories and concepts in practice. In addition, the course provides an in-depth understanding of the interactions between politics, criminology and criminal justice, and the impact of public policy in these areas.

This innovative course is taught by experts from sociological, legal and psychological backgrounds with real-world experience. You will benefit from research-led teaching as well as strong links to wider criminal justice professions and industry.





Criminology MRes

12 months full-time
27 months part-time

The MRes Criminology will provide you with the advanced theoretical, conceptual and methodological expertise and skills necessary to undertake and evaluate criminological, socio-legal and criminal justice research.

Combining core research skills with specialist criminology and criminal justice teaching from research-active staff, this course will encourage you to critically examine the theoretical foundations that underpin applied criminological research. Furthermore, the course provides formal, comprehensive, multi-disciplinary training in research methodologies and transferable employment related skills, for those interested applying for a PhD and/or planning a professional research career in the voluntary, public or private sectors.

The MRes is an Economic and Social Research Council (ESRC) and North West Doctoral Training Centre (NWDTC) recognised foundation course for research training. This is an essential first step if you wish to undertake doctoral research.

Criminology PGDip

9 months full-time
24 months part-time

The Postgraduate Diploma in Criminology allows you to develop specialist knowledge of the current trends and historical debates surrounding crime causation, crime control and regulation. The course equips you with the intellectual, critical and analytic skills needed for understanding and applying criminological theories and concepts in practice. Furthermore, the programme provides an in-depth understanding of the interactions between politics, criminology and criminal justice, and the impact of public policy in these areas.

This innovative course is taught by experts from sociological, legal and psychological backgrounds with real-world experience. You will benefit from research-led teaching as well as strong links to wider criminal justice professions and industry.

You will gain all the specialist knowledge of the full MA, but will not be required to produce a dissertation.

Criminology (Social Statistics) MRes

12 months full-time
27 months part-time

The MRes Criminology (Social Statistics) will provide you with a thorough grounding in research methods, as well as the tools to collect and analyse advanced quantitative statistical data, with a focus on criminological research, theory, policy and practice.

Combining criminology and social statistics teaching from research-active staff in the School of Law and the School of Social Sciences, this course will encourage you to critically examine the theoretical foundations that underpin applied criminological and sociological research and give you an advanced understanding of social statistics.

You will develop a critical understanding of quantitative and qualitative research methods and their application as well as specialist knowledge of the issues within contemporary criminological and criminal justice debates.

Healthcare Ethics and Law LLM

12 months full-time
24 or 27 months part-time
24 or 27 months part-time by distance learning

The LLM Healthcare Ethics and Law provides high-quality training in healthcare ethics and health care law. There is an emphasis on the application of bioethical and legal theory to real-world scenarios, thus catering to the practical needs of healthcare and legal professionals and those in related fields. This course is predominantly law based, and you are required to take law optional elements.



Elizabeth Chloe Romanis Healthcare Ethics and Law LLM

The University of Manchester was the obvious choice for my postgraduate degree. The academic expertise of the School of Law along with its position within the city of Manchester means I have everything I need to enjoy my time at the University and succeed academically.

The LLM Healthcare Ethics and Law is an amazing challenge, opening my eyes to so many interesting legal and ethical problems and improving my confidence to answer them. The course allows me to work with lawyers, medics, dentists, geneticists and philosophers, discovering new and different perspectives regarding my research. The quality of teaching at Manchester has been fantastic and with such a diverse working environment there is never a dull lecture and discussions are enlightening as well as motivating.

I have really enjoyed the opportunity to take what I have learnt in the course and apply it to my own dissertation research and look forward to taking this experience in to a PhD programme.



Nicole Renehan Criminology MRes

As a part-time student, The University of Manchester has been incredibly flexible and sensitive towards my commitments and working circumstances. Staff have taken the time out to meet with me prior to starting at the University to discuss timetables and module choices.

I love attending lectures in the knowledge that I am hearing, and learning, from some of the most respected researchers within their field. This is complimented by the opportunity to meet with staff on a one-to-one where your own research interests can be explored and critically, but productively, challenged. It's very rewarding to look back at the end of each milestone and see how much I've progressed.

Having received some excellent results from modules, I was thrilled to have been nominated to have my work published in the Manchester Review Journal. This is a real confidence boost and continues to push me towards my own goal of becoming a lecturer and researcher.



Healthcare Ethics and Law MA

12 months full-time
24 or 27 months part-time
24 or 27 months part-time by distance learning

The MA Healthcare Ethics and Law will provide you with expert knowledge and understanding of ethical and medico-legal theories, and the skills needed to apply them to real-world scenarios in a diverse range of contexts.

You will study a wide variety of ethical and legal subjects including autonomy, consent, refusal of treatment, confidentiality, the moral status of the foetus, resource allocation, genetic testing, HIV testing, medical malpractice, clinical negligence, organ and tissue transplantation, fertility treatment, genetic manipulation, research ethics, stem cell research and euthanasia.

Healthcare Ethics and Law MSc (Intercalated)

12 months full-time

At Manchester we provide the highest quality of training in healthcare ethics and healthcare law, for intercalating medical students. This course compliments your medical degree, giving you the opportunity to study the in-depth moral and legal issues that you will face as a medic or researcher. Whilst identifying the ethical and legally problematic aspects of practice, you will learn to suggest ways to minimise and formulate solutions in challenging circumstances.

On completion of the course, you will have a comprehensive understanding of the mechanics of medical ethics and medical law and a full conceptual toolkit that can be applied to both disciplines.

Healthcare Ethics and Law PGDip

12 months full-time
24 or 27 months part-time
24 or 27 months part-time by distance learning

The Postgraduate Diploma in Healthcare Ethics and Law course aims to provide the highest quality of training in healthcare ethics and healthcare law in a flexible and interdisciplinary way.

There is an emphasis on the application of bioethical and legal theory to real world scenarios, thus catering to the practical needs of healthcare and legal professionals and those in related fields. Students gain an expert knowledge and understanding of bioethical and medico-legal theories, and the skills needed to apply them to real world scenarios in a diverse range of contexts.

Healthcare Ethics PGCert

9 months full-time
18 months part-time by distance learning

The Postgraduate Certificate in Healthcare Ethics course allows you to gain knowledge and understanding of ethical and medico-legal theories without the need to complete a full master's course.

There is an emphasis on the application of bioethical and legal theory which caters to the practical needs of healthcare and legal professionals and those in related fields. You will follow the structure of the taught component of the MA and LLM, but will not be required to write a dissertation.

Healthcare Law PGCert

9 months full-time
15 months part-time by distance learning

This course allows you the opportunity to gain a comprehensive knowledge and firm understanding medico-legal theories without completing a full master's course. Students specialise in either healthcare ethics or healthcare law and will benefit from being taught alongside students studying the LLM, MA and PGDip.

Intellectual Property Law LLM

12 months full-time

The LLM Intellectual Property (IP) Law will give you a thorough understanding of the law concerning intellectual property and patents in modern business. Our IP experts will take you through the economic, social and philosophical aspects of IP law development and encourage you to critically analyse the current legal framework.

You will gain advanced knowledge in IP law and concomitant policy, learn about national and international grant enforcement and defence of intellectual property rights on a multi-jurisdictional basis.



International Business and Commercial Law LLM

12 months full-time

The LLM International Business and Commercial Law offers you the opportunity to develop an advanced understanding of the law governing commerce and finance in today's international market.

Multinational companies must regularly overcome a wide range of legal and governance issues in order to do business worldwide. This course will encourage you to explore the legal challenges faced by international business and analyse the fundamental legal framework for dealing with them. You will study areas such as corporate governance, international trade transactions and competition law.

International Financial Law LLM

12 months full-time

The LLM International Financial Law offers you an opportunity to gain specialist knowledge in one of the most topical and high-profile areas of legal studies today. Taught by experts in the field of financial regulation and securities markets, the course provides students with insights into the different specialist areas of financial law and a deeper understanding of this complex discipline. This course will introduce you to the major regulatory and transactional issues in international financial and banking law.

The stream revolves around three mandatory courses that deal with core aspects of international financial law, namely the regulation of financial markets, the law and practice of securities markets, and the law and practice of banking. This LLM strikes the perfect balance between theory and practice benefitting both future practitioners and those looking for a career in academia.

International Trade Transactions LLM

12 months full-time

The LLM International Trade Transactions offers you an opportunity to gain specialist expertise in an important area of law. Whilst specialist, it has considerable numbers of practitioners all around the world and it is growing as a result of globalisation. Developing countries need more lawyers educated in this area, as their development involves deepening involvement in the international trade process and the legal structures which underpin it.

This course provides you with the core knowledge and understanding of the background to international trade, the transactional conditions conducive to its development and the specific and general problems which threaten the success and integrity of individual transactions.



Georgiana Petrou

International Business and Commercial Law LLM

I strongly believe that the LLM International Business and Commercial Law from The University of Manchester's School of Law has broadened my horizons and increased the job opportunities available to me. Working in such an academically challenging environment has made all the work I have done really rewarding and I am proud to have studied at the Manchester School of Law.

The lecturers' and tutors' constant presence and willingness to help made my research one of a kind and truly tailored to my own interests and passion. Studying Business and Commercial Law in the Manchester School of Law helped me to expand essential practical legal skills such as advocacy, writing, drafting, interviewing and advising, providing the fundamental knowledge to succeed in a future career in business law.

Law LLM

12 months full-time

The LLM Law offers you a solid grounding in the fundamental principles of law, combined with the flexibility to explore your own interests with support from research-active teaching staff.

Manchester's unique combination of legal, criminological and ethical specialists collaborating within the School of Law means you will benefit from an impressive range of optional subjects and opportunities, enabling you to explore your own interests while studying with us.

Public International Law LLM

12 months full-time
27 months part-time

The LLM Public International Law allows you to develop recognised expertise in the main areas of international law. This master's course draws on Manchester's established reputation in international legal research to offer you a wide range of optional subjects, as well as the opportunity to customise your curriculum according to your career ambitions, needs and areas of interest.



Security and International Law LLM

12 months full-time
27 months part-time

The LLM Security and International Law allows you to develop advanced knowledge on the regulatory frameworks necessary to secure international relations and transactions between states, non-state entities, multinational companies, as well as individuals.

The course is premised on the idea that regulating security at an international level requires not only the regulation of the use of force and methods of warfare, but also that of international investments, international financial transactions and intellectual property. This holistic approach of the concept of security is at the heart of this course and offers a unique opportunity for you to gain expertise which is relevant and applicable in today's changing global landscape.

Security and International Law MA

12 months full-time
27 months part-time

The MA Security and International Law offers the benefits of a specialised master's without the requirement of an undergraduate law degree.

You will gain advanced knowledge in the main areas of international security and the UN system, and the tools necessary to understand the issues surrounding armed conflicts, terrorism, modern warfare, and the security of international transactions and intellectual property.

Transnational Dispute Resolution LLM

12 months full-time
27 months part-time

The LLM Transnational Dispute Resolution allows you to develop advanced knowledge of the rules and procedures along with how international and transnational disputes are settled.

The course focuses on the contemporary rules, procedures and practices of international courts and tribunals. This includes the International Court of Justice, interstate and mixed arbitration tribunals, as well as investment dispute resolution mechanisms such as the International Centre for Settlement of Investment Disputes (ICSID), or World Trade Organisation (WTO). It also deals with mechanisms allowing the settlement of disputes which are of a hybrid nature, partly international and partly domestic.

For more information about taught courses visit:
www.law.manchester.ac.uk/pgt

Research

In 2014/15, we attracted more than £345 million in external research funding, and the University was ranked in fifth place nationally in terms of research power according to the UK's 2014 Research Excellence Framework (REF2014).

At Manchester you will benefit greatly from our continued investment in the best research facilities, as well as a dynamic research culture that encourages innovative, cross-disciplinary collaboration. Our courses and programmes are led by distinguished tutors and fellow researchers working at the forefront of their disciplines, ensuring that your qualification comes with a reputation that will open doors across the world.

Close partnerships with organisations from many different sectors inform our research activity and postgraduate research programmes, providing exceptional opportunities for research with commercial applications, as well as the chance to develop business and entrepreneurial skills relevant to your future career.



Research programmes

Research is central to the work of the School of Law. Our diverse intellectual community brings together legal doctrinal scholars with economists, criminologists, ethicists, sociologists, socio-legal scholars, producing a wide range of scholarly and policy-oriented publications.

Through our active engagement and knowledge exchange with policy-makers, legislators, NGOs and activists working in a diverse range of fields and sectors, our research shapes law, policy, and social change. We invite you to explore our research themes, through which we encourage collaboration and debate within the School and beyond.

Our research degrees involve sustained, in-depth study into a specific topic, which is then written up as a thesis for examination. We offer a PhD by publication in Bioethics and Medical Jurisprudence, which allows you to benefit from taught classes, peer support and the opportunity to build your portfolio of publications while you study, as well as traditional research PhD programmes in Law and in Criminology.

Undertaking a PhD is challenging, but you will receive expert supervision during your time with us. This includes regular meetings with your supervisors and an annual review meeting for you to present details of your progress to other academic staff. Supervisors will normally be allocated from within the School, but creating supervisory teams with scholars from other areas of the University is also possible.

Our dedicated researcher development team provides individual tailored training, to support the development of your research skills, as well as guidance for your career in academia or further afield. To test your ideas and disseminate your scholarship, the School actively supports and encourages you to engage with the wider academic community.

Funds are available to support travel to conferences and many of our students present papers at international conferences. You are also encouraged to publish your work.

For more information about research programmes visit:
www.law.manchester.ac.uk/pgr

Bioethics and Medical Jurisprudence PhD

3 years full-time
6 years part-time

Law PhD

3 years full-time
6 years part-time

Criminology PhD

3 years full-time
6 years part-time



Maximilian Dyck Law PhD

I really enjoyed my LLM in International Business and Commercial Law, especially International Financial Services Regulation. My lecturers were so enthusiastic about their field and so encouraging that I decided to complete my PhD here. I am very interested in interdisciplinary research with economics and the School of Law has helped me to pursue research on this basis.

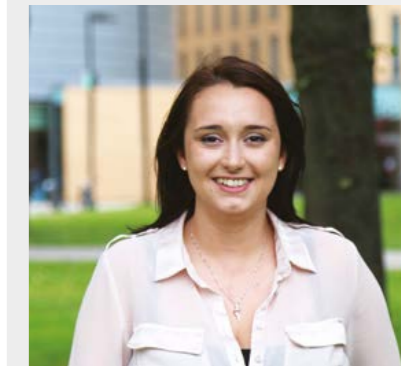
All academics in the law school are keen on helping research students develop their own line of thinking. All research students are equally interested in each other's research and have been very helpful when explaining how the PGR community works. I feel like I am part of something great and meaningful.



Sacha Waxman Bioethics and Medical Jurisprudence PhD

I completed an MA here in 2005 and not only loved the course but the Law School, the staff and the environment on campus. After practising law for several years I decided to return to postgraduate research and returning to Manchester naturally was the first choice.

The balance here is perfect. The academic and admissions staff in the School are always available if you need help. Academics also encourage you to work on your own and pursue your research interests. The feeling of community is very strong and the support network creates the perfect environment for academic study.



Elizabeth Cook Criminology PhD

I completed both my BA in Criminology and MRes in Criminology and Socio-Legal Studies here in The University of Manchester. Applying for the PhD programme provided me with the opportunity to work within a very supportive research community alongside staff that shared my research interests and would be able to offer their expertise in my chosen area.

Throughout my university career the department has provided absolute support and guidance, whether in teaching or supervision, but also great opportunities and challenges to encourage development. The supervision provided at the University has been excellent in preparing me for a career in academia such as offering guidance on publishing and the opportunity for teaching experience this year.

Applying to Manchester

Submitting an application to study at
The University of Manchester couldn't be simpler...

Please go to the links below to apply online for our taught and research postgraduate degrees:
www.manchester.ac.uk/study/masters/admissions/apply

www.manchester.ac.uk/study/postgraduate-research/admissions/how-to-apply

International students

We also have educational consultants in some overseas countries who can assist you with preparing and submitting your application.

Visit our international applicant website to find out more:
www.manchester.ac.uk/international/country

We also recognise many different qualifications from around the world. For details of international entry requirements and equivalencies please visit: www.law.manchester.ac.uk/study/international-applicants/

English language requirements

An ability to communicate effectively in English is vital to your academic performance and progress at Manchester. Improving your English is also a valuable long-term skill that will enhance your job prospects.

For further information on the application process, language testing, eligibility and support, please see the course information pages at:
www.law.manchester.ac.uk/pgt
www.law.manchester.ac.uk/pgr

Alternatively please contact the postgraduate admissions office:

Recruitment and Admissions Office
The School of Law
Williamson Building
The University of Manchester
Manchester
M13 9PL

Taught courses

+44 (0)161 306 1270
pg-law@manchester.ac.uk

Research programmes

Tel: +44 (0) 161 306 1279
research-law@manchester.ac.uk



