

MANCHESTER
1824

The University
of Manchester

CUPS

Centre for Urban
Policy Studies

spatial analysis + policy evaluation

ANNUAL REPORT 2013

www.sed.manchester.ac.uk/research/cups/

CONTENTS

- 3 Foreword**
- 4 Director, membership and associates**
- 5 30 years of CUPS**
- 6 CUPS through the years**
- 8 Centre achievements**
- 10 Wider service to the School and University**
- 11 Staff development and esteem**
- 12 On-going projects**
- 13 Grant applications in the pipeline**
- 13 Web site visitor counts**
- 14 Conference and invited presentation**
- 14 Publications**
- 15 Details regarding future plans and activities**
- 15 Financial Report**
- 16 Appendix**

ANNUAL REPORT

Centre for Urban
Policy Studies

CUPS 2013

FOREWORD

2013 marks the 30th anniversary of the Centre for Urban Policy Studies (CUPS). Since being established in 1983 CUPS has gained a reputation for policy-relevant research on the evaluation of area-based urban policy initiatives, regional development, spatial planning and housing, and the measurement of neighbourhood dynamics.

As part of the Cities@Manchester Network CUPS ultimately aims to produce urban policy research at the University of Manchester at a level recognised by peers and practitioners as significant - both nationally and internationally. More generally, the Centre promotes interdisciplinary synergies for urban policy research in the School of Environment, Education and Development (SEED), across the wider University of Manchester, and in co-operation with other external research institutions.

To these ends, academic staff, researchers and research students affiliated to CUPS pursue the following objectives:

- To provide the locus for a range of urban policy research interests within the University of Manchester around which new research ideas can cohere and be supported;
- To encourage the cross-fertilisation of ideas and the pooling of skills amongst academic staff and research students within a collegiate working environment;
- To provide a supportive home for researchers at all career progression points and to offer peer support and assistance for all stages of the research process; and,

- To actively develop links outside the University in order to encourage the reciprocal transfer of ideas with leading urban policy-makers and fellow academics.

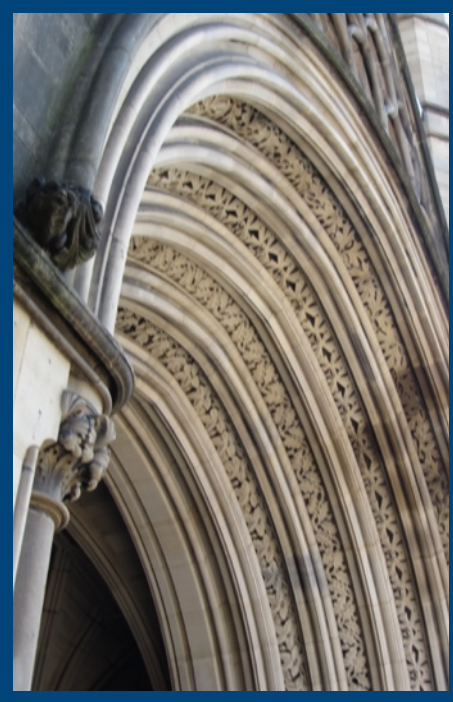
The research centre principally draws upon expertise from within the disciplines of spatial planning and geography. However, many current and past projects have involved significant collaboration with other disciplines (such as architecture, civil engineering, criminology, economics, politics, sociology, and transport studies). CUPS has also developed a strong track-record of collaboration with leading researchers based in other institutions, both within the UK and internationally.

This annual report highlights the main achievements of the Centre for Urban Policy Studies between August 2012 and July 2013 by summarising the collective activity of staff members.



Cecilia Wong, Professor of Spatial
Planning Executive Director, Centre for Urban Policy Studies

MEMBERSHIP



The Centre for Urban Policy Studies is managed by Cecilia Wong (Director), Brian Robson (the Centre's founder) and Iain Deas.

Core academic staff members include Mark Baker, Adam Barker, Yasminah Beebeejaun, Stephen Hincks, Carys Jones and Richard Kingston. Additionally, there are three full-time research associates (Vasilis Vlastaras, Jenni Viitanen and Brian Webb), one part-time member (Vivien Holt), and several associated members, including Bob Barr, Michael Bradford, Armando Carbonell, Vincent Goodstadt, Graham Haughton, Michael Hebbert, and Paul Syms.

This year the Centre said goodbye to three of its members as Andreas Schulze Bäing took up a new position at the University of Liverpool, Paul O'Hare took up a Lectureship at Manchester Metropolitan University and Yasminah Beebeejaun is scheduled to move to UCL Bartlett in August after over 5 years at Manchester. All CUPS members wish Andreas, Paul and Yasminah well in all their future endeavours.

The Centre additionally has a number of affiliated doctoral students: Abbas Ziafati Bafarasat, Lee Dixon, Abigail Gilbert, Sara Hassan, Vivien Holt, Charles Jarvis, Ann Kolodziejski, Victoria Lawson, Seyedehsomayeh Taheri Moosavi, Rachel Morrison, Nick Moule, Angela Neilson, Karen Nolan, Miao Qiao, Shilpi Roy, Moozhan Shakeri, Qyan Solana, Taki Sonbli, Somayeh Taheri, Matthew Thompson, and Zhenbo Yu. In the past year, the Centre has celebrated a number of successful doctoral completions: Jennifer Hall, Daniel Strosnider, Jessica Pineda Zumaran, and Yi Zhang.



Jessica Pineda Zumaran celebrates her graduation with Brian Webb

A range of CUPS PhD members that have since graduated have gone on to take up both academic and practitioner careers. Hui Qian and Kai Zhou have both gone on to become Lecturers in Chinese universities, with Hui Qian working as a Lecturer in the Department of Urban Planning and Design, School of Architecture and Urban Planning, Nanjing University and Kai Zhou working as a Lecturer in the Department of Urban Planning, School of Architecture, Hunan University while Rung-Jiun Chou is an Assistant Professor at Chung Yuan Christian University, in Taiwan. Jorge Inzulza Contardo is a Lecturer in the Facultad de Arquitectura y Urbanismo, Universidad de Chile.

Several other former CUPS PhD students have gone on to take up research posts, including Jenni Viitanen and Brian Webb within CUPS, James Hopkins within the Centre for the History of Science, Technology and Medicine at the University of Manchester, Nicola Headlam within the Heseltine Institute for Public Policy & Practice at the University of Liverpool, Andreas Schulze Bäing in the Department of Civic Design at the University of Liverpool, and Jennifer Hall at the University of Central Lancashire. While Rocco Bubbico has become a Policy Analyst at the European Commission (Directorate-General Regional and Urban Policy). Rocco Bubbico, Jorge Inzulza Contardo and Hui Qian have been named as Honorary Research Fellows within the School of Environment, Education and Development.

30 YEARS OF CUPS

On 4 June CUPS celebrated its 30th anniversary with a one-day conference on urban policy and evaluation. The conference was chaired by Peter Hetherington (The Guardian) and featured talks by Sir Brian Briscoe (former Chief Executive of the Local Government Association), Professor Pete Tyler (University of Cambridge), Sir Richard Leese (Manchester City Council), Dr. Ruth Lupton (London School of Economics), Dr. Alasdair Rae (University of Sheffield) and Kitty Lympelopoulou (University of Manchester), and Dr. Robert Barr (manchester.geomatics). Founding Director of the Centre, Professor Brian Robson shares his thoughts on some of the achievements of CUPS over the years.



Professor
Brian Robson

CUPS was initially based in the Geography Department in Manchester, but has always been an essentially multi-disciplinary centre, collaborating with economists, planners and other social scientists from other universities, working with external consultancies (most recently Amion Consulting in Liverpool), and drawing its research assistants from a wide range of disciplines.

Our work has aimed to draw on our academic research expertise and yet address the needs and interests of practical policy makers. I would highlight three major examples that illustrate this. Michael Bradford and I were centrally involved in the first two and Cecilia Wong in the third.

First, is the evaluation of the government's Action for Cities programme. This developed a new framework for evaluating policy (which was fed into the Treasury's Green Book) and was also influential in the government's decision to introduce the Single Regeneration Budget programme to roll together a variety of funding streams.

Second is the development of a new approach to measuring deprivation, the Index of Local Conditions. This introduced the concept of deprivation as a matrix rather than a single value, was used to help determine resource allocation for deprived areas, and has been the basis of the government's subsequent deprivation indices. Our recent work has argued that not all deprived areas are the same by introducing a four-fold typology based on the different roles that deprived areas play within the churn of the housing market.

Third is the development of the 'Map for England', done for the Royal Town Planning Institute, which pulls together the geographical impacts of a wide range of government policies. It has attracted great interest and provides a powerful argument for government funding departments to be more alive to the spatial implications of their policy and for governments to work towards a national spatial strategy.



30 years of CUPS researchers
celebrate the Centre's anniversary

Thirty years is a long time for a research centre to survive and thrive. Much of our success has of course been at the hands of CUPS research assistants. We have been very fortunate to have attracted a continuing stream of very able, enthusiastic and hard working researchers, who have gone on to senior posts in universities, central and local government. All of us at CUPS are very grateful for their invaluable contribution and I have no doubt that the CUPS story has many more years of life to run.

Copies of presentations from the 30th Anniversary Conference are available at:

<http://www.sed.manchester.ac.uk/research/cups/CUPS30thAnniversaryConference.htm>

CUPS THROUGH THE YEARS

1980s

RESEARCHERS

Giles Foody, Richard Nutter, Jamie Peck, Rachel Tye, and Alan Steward joined CUPS as researchers during this period.

The 1980s saw the establishment of the Centre for Urban Policy Studies in 1983. During this period CUPS developed a reputation for policy relevant research related to housing, the evaluation of urban policy, and the study of neighbourhood deprivation.

SELECTED PUBLICATION HIGHLIGHTS

Robson, B., Peck, J. and Steward, A. (1983) Resource allocation to housing associations: the North West and the Generalised Needs Index, A Report to the North West Council of the National Federation of Housing Associations.

Robson, B. (1985) Changing views of the city in British geographical research, *Geographia Polonica*, 51.

Robson, B. (1985) Where is the North? An essay on the North/South divide, Northern Regional Consortium.

Robson, B. (1986) Research issues in the changing urban and regional system, *Regional Studies*, 20.

1990s

RESEARCHERS

Iain Deas, Anna Fielder, Simon Franklin, Ed Hall, Eric Harrison, Nigel Lawson, Rosie Tomlinson, Rachel Tye, Laura Twomey, and Elaine Warren joined CUPS as researchers during the 1990s.

The 1990s saw the publishing of the influential CUPS report for the Department of the Environment on 'Assessing the Impact of Urban Policy'. CUPS research continued to focus on urban policy with a specific emphasis on urban regeneration, the development of deprivation indices, urban governance, economic competitiveness and regional development.

SELECTED PUBLICATION HIGHLIGHTS

Robson, B., Bradford, M., and Deas, I. (1994) Relative Deprivation in Northern Ireland, Policy Planning and Research Unit Occasional Paper 28.

Robson, B., Parkinson, M., Bradford, M.G., et al. (1994) Assessing the impact of urban policy, HMSO.

Robson, B., Deas, I., Twomey, J., and Topham, N. (1995) The impact of Greater Manchester's universities, Manchester University.

Bradford, M.G., Robson, B., and Tye, R. (1995) Constructing an urban deprivation index: the need for flexibility, *Environment and Planning A*, 27.

CUPS THROUGH THE YEARS

2000s

RESEARCHERS

The 2000s saw Magrethe Anderssen, Benito Giordano, Stephen Hincks, Adam Holden, Kitty Lymeropoulou, Micaela Mazzei, Paul O'Hare, Hui Qian, Alasdair Rae, James Rees, Andreas Schulze-Bäing, Brian Webb, Dave Whyte and Kai Zhou join CUPS as researchers.

The directorship of CUPS was passed to Professor Cecilia Wong in May of 2006 following Professor Brian Robson's retirement. In 2008 Professor Brian Robson was awarded an Order of the British Empire for services to urban regeneration. In 2009 the CUPS typology of the functional role of deprived communities was published.

SELECTED PUBLICATION HIGHLIGHTS

Wong, C., Schulze Bäing, A. and Rae, A. (2006) *Uniting Britain – The Evidence Base: Spatial Structure and Key Drivers*, RTPI.

Wong, C., Baker, M., Hincks, S., Rae, A., Ferrari, E. and Watkins, C. (2008) *Outcome Indicators for Spatial Planning in England*, RTPI and CLG.

Wong, C., Gibb, K., McGreal, S., Hincks, S., Kingston, R., Leishman, C., Brown, L. and Blair, N. (2009) *Housing and Neighbourhood Monitor: UK Report*, Policy Press.

Robson, B., Lymeropoulou, K. and Rae, A. (2009) *A typology of the functional role of deprived communities*, CLG.

2010+

RESEARCHERS

2010s saw Yi Gong, Nicola Headlam, Sarah Payne, Jenni Viitanen, and Vasilis Vlastaras join the Centre as researchers.

The early part of the 2010s has seen CUPS continue to develop cutting-edge and collaborative research on spatial analysis, infrastructure planning and new approaches to public participation GIS. 2012 saw the publication of 'A Map for England'.

SELECTED PUBLICATION HIGHLIGHTS

Hincks, S. and Robson, B. (2010) *Regenerating Communities First Neighbourhoods in Wales*, JRF.

Baker, M., Hincks, S., Gong, Y., Schulze-Bäing, A. and Wong, C. (2010) *Recommended housing market area boundaries: implications for spatial planning: Geography of housing market areas in England - paper C.*, CLG.

Wong, C., Gibb, K., McGreal, S., Webb, B., Leishman, C., Blair, N., Hincks, S. and McIntyre, S. (2011) *Housing and Neighbourhoods Monitor 2011 – Fragility and Recovery*, JRF.

Wong, C., Baker, M., Hincks, S., Schulze-Bäing, A. and Webb, B. (2012) *A Map for England: Spatial Expression of Government Policies and Programmes*, RTPI.

CENTRE ACHIEVEMENTS

Staff and associates at the Centre for Urban Policy Studies engage in a range of activities that demonstrate research activity and policy engagement. This section of the report provides a brief overview of these efforts across the past year, and details plans to maintain this level of activity.

Full details of achievements and activities are available in the Appendix of the Report.



International practice and knowledge exchange

Centre members have continued to engage with policy and practice communities, under-writing our commitment to achieve knowledge transfer and exchange. Cecilia Wong and Mark Baker have been involved in an international consultancy team led by Nanjing University (China) to contribute to the work of the new Shantou Master Plan. Cecilia is charged with developing an innovative indicators framework to monitor the progress of the new 'Shantou Master Plan'. She will work closely with former PhD graduate, Dr. Kai Zhou, now a lecturer at Hunan University to make the monitoring framework an interactive information management system. Learning from the experience of developing the Spatial Planning Outcomes in England, the broad principles of developing 'an integrative, collaborative, reflexive and flexible' indicators framework with a map-based visual interface were presented, in April 2013, to the international expert panel and senior planners and politicians of the Shantou Government and the proposal was very positively received by the politicians and academics.

Roger Bristow, Mark Baker and Cecilia Wong were also invited to participate in the 'Planning for Tourism and Cultural Creative Industry in the National Palace Museum Park Area' in August 2012 at National Taipei University.

Twelve years on, Cecilia's research on local economic development has led to the invitation by the UN-Habitat Best Practices and Local Leadership Programme (MERC-BLP) partner to advice on the development of Cities Prosperity Index (CPI) for the Middle East Regional Center in 2013.



Collaboration

In July, Graham Haughton, Cecilia Wong, and Brian Webb met with Edward Blum from the Department of Urban Design and Planning at the University of Washington to discuss a contribution from the Planning and Environmental Management Department to a future field course on European Planning: Land Use, Public Transit and Non-Motorized Infrastructure which is now planned to take place in the future. Additionally, CUPS organised a design workshop for landscape architecture students from Taiwan in August 2012.



Research impact

Last year Richard Kingston was successful in receiving an award from UMIP's Energy Innovation Fund in order to develop the TellUs Toolkit. UMIP received around 40 applications from across the University, invited 3 for interview and decided to fund 2 of them, one of which was Richard's proposal. He was awarded £140,000 to support the commercialisation of his Public Participation Geographical Information Systems tools and methods which support stakeholder engagement in environmental decision making (www.tellus-toolkit.com). This is an excellent example of how social science research (over the past 15 years he has received funding from ESRC, EPSRC and the EU) can be translated in to having an impact in the real world. The project employs Jenni Viitanen, Brian Webb and Vasilis Vlastaras.

The TellUs Toolkit is a cloud-based decision support system to help plan and manage location-based assets and engage stakeholders. The toolkit provides a tailored package of map-based software tools to support business decisions and stakeholder engagement.

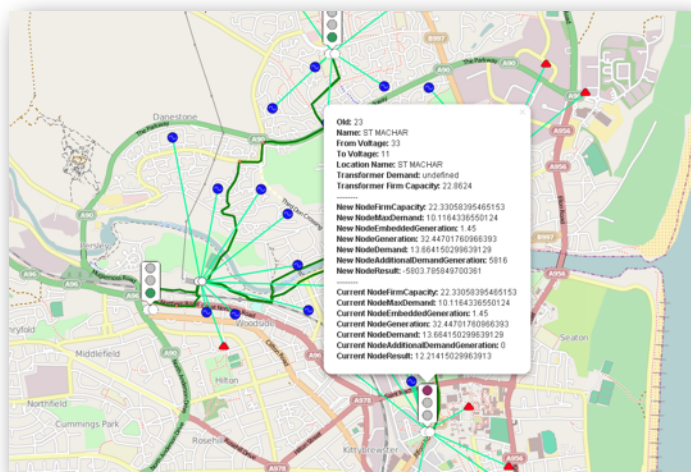
The solutions are modular and have wide commercial applications in any area where decisions about places or the location of facilities are made. The idea behind the toolkit is about harnessing the power of maps and Geographical Information Systems (GIS) and make them available in user-friendly online or desktop applications for non-expert users.

In partnership with Scottish and Southern Energy, the toolkit has been piloted to help optimise the connection of low carbon technologies to a

network using dynamic geo-spatial mapping which helps to identify opportunities to deploy Active Network Management systems which are then combined with a set of spatial constraint maps. The TellUs Toolkit provides the electricity distribution network and assets in geographically representative digital maps that allow a range of intelligent functions, including:

- Identify constraints of the electrical distribution network.
- Propose solutions to the limitations of the electrical distribution network.
- Easily add and remove site characteristics and contextual data to the map according to customised needs and requirements.
- Analyse the impacts of planned additions to the network.
- Interact with and optimise solutions according to flexible criteria.

The pilot project with SSE was successfully concluded in July 2013.





a map for ENGLAND

Research and practice

Cecilia Wong continues the work on A Map for England: spatial expression of government policies and programmes, Royal Town Planning Institute with Mark Baker, Stephen Hincks, and Brian Webb. Since its publication the Map for England has been used as evidence for a number of submissions to Government, most recently:

- RTPI Briefing on No Stone Unturned – Business, Innovation and Skills Select Committee (A Map for England) http://www.rtpi.org.uk/media/1735844/rtpi_briefing_on_no_stone_urned.pdf (10 December 2012)

- MPs drew on Map for England data in debate about Growth and Infrastructure Bill (A Map for England) <http://www.rtpi.org.uk/briefing-room/news-releases/2012/december/mps-draw-on-map-for-england-data-in-debate> (5 December 2012)
- RTPI Response to Consultation: Draft Water Bill' (A Map for England) http://www.rtpi.org.uk/media/1603883/rtpi_response_to_draft_water_bill.pdf (14 September 2012)

Engaging with government and the community

Graham Haughton, Cecilia Wong, Stephen Hincks and Brian Webb are providing the UK Department

for Business, Innovation and Skills (BIS) with monthly commentary on regional employment, output and investment trends in the North West of England for use by ministers and policymakers in Whitehall.

As part of the SMARTiP project Jenni Viitanen has been involved in public engagement and dissemination of the project, particularly in relation to the the Green Home Watch website which is part of the TellUs Toolkit. The public engagement and dissemination was supported by the University of Manchester Social Responsibility Flagship Support Fund.



Wider service to the School and the University

The Centre for Urban Policy Studies, under the leadership of Professor Cecilia Wong, has worked hard over the past year to promote its identity within the School, Faculty and University, and to promote the policy relevance and pertinence of the work of research staff and academics.

CUPS is part of the wider Cities@Manchester research network and Cecilia Wong is currently co-director of Cities@Manchester. CUPS staff members also exploit their research expertise to develop new modules to enhance the teaching of the Planning and Environmental Management programme as well as provide a more international dimension to its teaching.



Staff Development and Esteem

Between August 2012 and July 2013 CUPS members have gained or retained a number of esteem appointments, underlining the Centre's academic and policy-relevance (outlined in Appendix I).

Cecilia Wong has been made an Expert Group Member of the UN-Habitat City Prosperity Index, Middle East Regional Centre of Best Practices and Local Leadership Programme, which is a regional partner of UN-Habitat. She also became a Commissioning Panel Member for ESRC's 2013 Research Seminar Competition and was reappointed as a member of ESRC Peer Review College. Mark Baker took over the role of Chair of the RTPI Partnership Board at Oxford Brookes University and continues to serve on the RTPI Partnership Board for the University of Manchester.

Mark Baker and Cecilia Wong have also been active internationally. They were visiting academics at the University of Nanjing, China in July and August 2012 where they presented on recent developments in spatial planning in the UK to researchers and students at Nanjing University and the Nanjing Urban Research Institute. They were also invited to present at ISOCARP and the Sino-French Centre for Urban, Regional and Planning Studies (SFURP) Joint Seminar on New Reform, New Planning, New Urbanism at the University of Nanjing, China and by the Institute of Urban Planning and Design at Nanjing University and the Shantou Planning Bureau, China to participate in the international expert panel which advised on the Development of a Masterplan for Shantou City in March. Mark and Cecilia were also active in Taiwan where they were invited by National Cheng Kung University (NCKU), Tainan, Taiwan, to participate in the iCities International Planning Education Forum.

Stephen Hincks was appointed as an External Examiner at Heriot-Watt University for the MSc/Diploma in Urban and Regional Planning (Oct 2012-Sept 2016) programme and the MSc/Diploma in Sustainable Urban Management (Oct 2012-Sept 2016) programme. From 2012 to 2013, Richard Kingston was invited to join the Expert Advisory Panel of an FP7 programme IREEN - ICT Roadmap for Energy Efficient Neighbourhoods with Jenni Viitanen as a consultant on the project. A publication is in preparation from the project (co-authored with Martine Tommis from Manchester City Council). Brian Webb continues to serve as a blogger for the Regional Studies Association Blog, which has received over 70,000 page views since first going online. He was also invited to give evidence and participate in a Landscape and Urban Design Workshop for the UK Government's Farrell Review on Architecture and the Built Environment and was the main organiser for the CUPS 30th Anniversary Conference. In March, Brian was invited to present on 'Regulatory Planning in a Comparative Perspective' at the Department of Civic Design, University of Liverpool.

Professor Vincent Goodstadt has been elected to the Academy of Social Sciences. Vincent is the Past President of the Royal Town Planning Institute (RTPI) and is currently its Honorary Treasurer and Trustee. He co-authored the New Vision for Planning which has guided the renewal of the planning profession in the UK. He has a long standing commitment to linking tertiary planning education and practice as a lecturer and examiner.

ON-GOING PROJECTS

CUPS has continued to secure funding from a range of sources, reflecting the diversity of the Centre's research interests. The scope of these funding sources reflects the ability of Centre staff to engage with a range of sponsors and our capability to produce work of use to a range of policy-makers, charitable organisations, professionals and practitioners.

SMARTiP

Richard Kingston and Jenni Viitanen continue their research on the SMARTiP project (<http://www.smart-ip.eu/>). Funded by the EU's ICT Policy Support Programme, the Manchester component of the Smart Metropolitan Areas Realised through Innovation & People developed the Green Home Watch, a map-based crowd sourcing website that allows citizens to share their experiences of eco heating services and products.

Soft Spaces

Graham Haughton, Iain Deas, Stephen Hincks and Vivien Holt continue to explore 'Soft spaces, spatial planning and territorial management in Europe', a collaborative project led by HafenCity University Hamburg with partners at University Paris-Sorbonne, TU-Delft, Cambridge and Manchester with funding from the Hamburg Science Foundation.

BIS North West Regional Economic Intelligence

Graham Haughton, Cecilia Wong, Stephen Hincks and Brian Webb continue to provide the UK Department for Business, Innovation and Skills (BIS) with monthly commentary on regional employment, output and investment trends in the North West of England for use by ministers and policymakers in Whitehall.

EuroCities

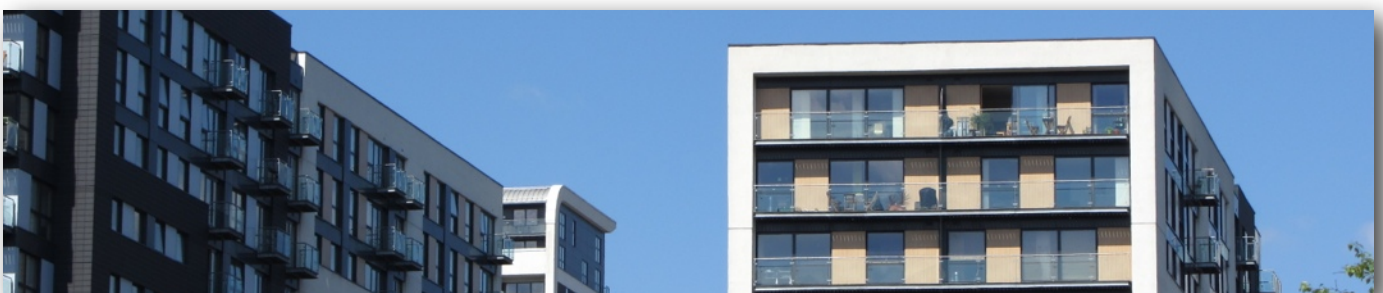
Iain Deas, Stephen Hincks, Brian Webb and Andreas Schulze Bäing completed a project for Eurocities, exploring patterns of migration and mobility across urban areas in the European Union. The research was presented by Iain Deas at EuroCities economic development forum in Riga in October.

Data Map Portal

Richard Kingston, Brian Webb, Vasilis Vlastaras and Miao Qiao are developing an online CUPS data map portal that will bring together the range of spatial data compiled and utilised by CUPS research. It will include 2011 Census Data, data developed for the Map for England project, the data collected for the Housing and Neighbourhood Monitor, and environmental data from the TellUs Toolkit pilot project.

Local Economic Well-being

Brian Webb is currently undertaking research on local economic well-being in England during the boom (2004-2008) and bust (2009-present) years. The research is due to be published at the end of August 2013 in a report entitled 'Local Decline & Recovery: Divergent economic well-being in England'



Funding success

Members of CUPS were successful in obtaining additional funding from a range of organisations. Cecilia Wong and Mark Baker got a research grant for the development of an indicator monitoring framework and an information management system as well as transferable lessons on public participation for the Shantou City Master Plan (2012-2030), Nanjing University, China (£25,000).

Iain Deas and Yasminah Beebeejaun, working with MERCi, were awarded a three-year ESRC North West Training Centre doctoral studentship to explore 'meanwhile land' and the re-use of brownfield land in a context of weak property market conditions and dwindling public resources.

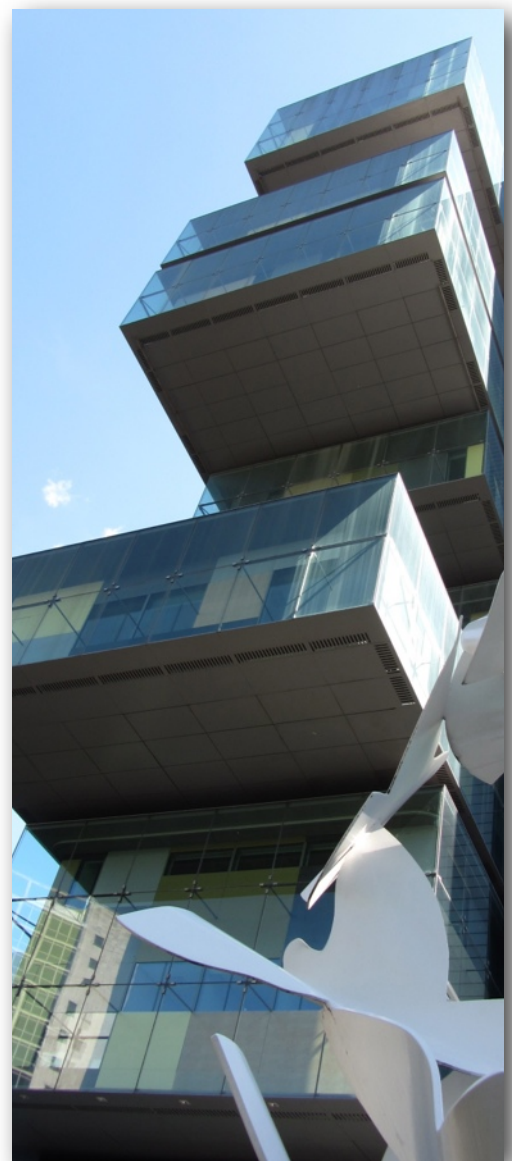


Grant applications in the pipeline

Richard Kingston and Jenni Viitanen have submitted a bid to the Technology Strategy Board's "Future Cities Solutions" competition. Phase 1 of this bid (submitted in August 2013) is a feasibility study for a "Smart City Energy Map", working with six "future city test beds" in the UK. If successful, this paves the way to compete for Phase 2 which would entail building the tool over a period of 18 months based on the TellUs Toolkit platform. Richard Kingston has also developing a £230,000 bid to the Energy Innovation Centre to continue to develop the TellUs Toolkit

A major ESRC-ORA Plus bid was submitted by Cecilia Wong and Stephen Hincks, with Universities of Trente, Phoenix, and Dortmund on Monitoring community quality of life for urban policy-making: A cross country comparative approach. Richard Kingston, Stephen Hincks, Brian Webb, and Vasilis Vlastaras are preparing a £200,000 bid to the ESRC's Secondary Data Analysis initiative, to develop an online tool that will allow users to utilise secondary data in order to create bespoke typologies of places. The bid will also seek to link to other universities secondary data analysis bids.

Richard Kingston, Brian Webb, and Vasilis Vlastaras are preparing a bid to the NHS' Public Health Research (PHR) Programme to create a spatial mapping tool that will allow real-time health data to be mapped and analysed. Brian Webb is also preparing a £5,000 bid to the AHRC on 'Building Spatial Analysis Skills for Arts and Humanities Researchers' through the 'Collaborative Skills Development' call.





Conferences and invited presentations

Academics and researchers associated with CUPS have attended and contributed to a wide range of national and international conferences, seminars and workshops over the past year. This has included multiple contributions to several different proceedings of the Regional Studies Association, as well as papers presented to the Association of European Schools of Planning / Association of Collegiate Schools of Planning, Policy and Politics, and the UK Energy Research Centre.

Michael Hebbert presented at a special symposium on PostWar Manchester while Stephen Hincks was invited to present a seminar on 'The Definition and Application of Spatial Housing Markets' to the Korea Research Institute for Human Settlements, and Jenni Viitanen collaborated with Manchester City Council to present a paper on 'ICT in sustainable neighbourhoods - the retrofit challenge in a post-industrial city' at the Smart City Event in Amsterdam.

The Centre supports conference attendance and participation in proceedings at all stages of individual's careers, particularly early career researchers and doctoral students. In particular, current and recently graduated Ph.D. students have attended several of the above meetings.

Publications

Centre members have authored or co-authored 29 publications, from policy reports, books, and book chapters to peer reviewed articles in internationally respected journals. Several of these were published after collaboration with colleagues from other institutions, whilst others have been derived from cross-centre co-operation. These publications have policy relevance and implications for practice and professionals, as particularly represented by articles written for professional or trade journals.

Peer reviewed journal articles were published in journals of international standing within the discipline of town and country planning and beyond, including:

- Environment and Planning A
- Environment and Planning B: Planning and Design
- Environment and Planning C: Government and Policy
- Environmental Impact Assessment Review
- Planning Practice and Research
- Planning Theory and Practice
- Journal of Urban Regeneration and Renewal
- European Planning Studies
- Housing Studies
- International Journal of Disaster Resilience in the Built Environment
- Regional Studies
- Town Planning Review
- Urban Policy and Research, and
- Urban Studies.

Major research contributions have been published in conjunction with EuroCities and the Nuffield Foundation. Shorter articles of professional interest have been composed for trade journals such as Town and Country Planning and New Start.

Members of CUPS are also active as editors for special issues of journals, with Mark Baker, Brian Webb, and Cecilia Wong editing a special issue of Town Planning Review on 'Planning for Infrastructure: Transitional Pathways for Lagging Regions' and Richard Kingston editing a special issue of Environment and Planning B: Planning and Design on 'Smart Cities'

FUTURE PLANS AND ACTIVITIES

We will work further toward the School's operational plan targets by aiming to generate more substantial levels of research income. Moreover, recognising anticipated financial pressures over the coming years, the Centre aspires to diversify its range of research sponsors.

As noted in previous years, playing to the strengths of the CUPS team, our research portfolio and experience strengthens the emerging research excellence of SEED, particularly regarding urbanisation sustainability, and poverty agendas.

We continue to develop research collaboration with the University's Intellectual Property Team, the Manchester Business School, and the School of Mechanical, Aerospace and Civil Engineering, and the Manchester Architecture Research Centre in SEED. CUPS will continue to work closely with colleagues in the Cities@Manchester and Policy@Manchester networks to submit research bids and enhance policy impact. Internationally; we have extended our European network to bid for EuroCities, European Commission, and EU Framework 7 projects. As well we have continued to work with Nanjing University in China and the Department of Urban Planning of the National Cheng Kung University in Taiwan. These networks will facilitate further research opportunities over the coming years.

In the medium-term future, CUPS academics and researchers aim to continue to develop our research activities by concentrating on the following areas:

1. Evaluation of area-based urban policy initiatives;
2. Territorial spatial planning; and
3. Spatial analysis and public participation GIS.



APPENDIX

Esteem Indicators and Appointments

Mark Baker took over the role of Chair of the RTPI Partnership Board at Oxford Brookes University

Mark Baker continues to serve on the RTPI Partnership Board for the University of Manchester.

Mark Baker and **Cecilia Wong** were visiting academics at the University of Nanjing, China in July and August 2012.

Mark Baker and **Cecilia Wong** were invited to present at ISOCARP and the Sino-French Centre for Urban, Regional and Planning Studies (SFURP) Joint Seminar on New Reform, New Planning, New Urbanism at the University of Nanjing, China.

Mark Baker and **Cecilia Wong** were invited by the Institute of Urban Planning and Design at Nanjing University and the Shantou Planning Bureau, China to participate in the international expert panel which advised on the Development of a Masterplan for Shantou City in March.

Mark Baker and **Cecilia Wong** were invited by National Cheng Kung University (NCKU), Tainan, Taiwan, to participate in the iCities International Planning Education Forum.

Roger Bristow, **Mark Baker** and **Cecilia Wong** were invited by National Taipei University (NTPU), Taiwan, to participate in the 2nd Forum & Workshop for the Planning for Tourism and Cultural Creative Industry in the National Palace Museum Park, National Taipei University (NTU), Taipei (August 2012).

Mark Barker, **Brian Webb**, and **Cecilia Wong** are editing a special issue of Town Planning Review on 'Planning for Infrastructure: Transitional Pathways for Lagging Regions'

Vincent Goodstadt has been elected to the Academy of Social Sciences.

Stephen Hincks was appointed as an External Examiner at Heriot-Watt University for the MSc/Diploma in Urban and Regional Planning (Oct 2012-Sept 2016) programme and the MSc/Diploma in Sustainable Urban Management (Oct 2012-Sept 2016) programme.

Richard Kingston is editing a special issue of Environment and Planning B: Planning and Design on 'Smart Cities'

Richard Kingston was invited to join the Expert Advisory Panel of an FP7 programme IREEN - ICT Roadmap for Energy Efficient Neighbourhoods and **Jenni Viitanen** as a consultant on the project.

Brian Webb continues to serve as a blogger for the Regional Studies Association Blog.

Brian Webb was invited to give evidence and participate in a Landscape and Urban Design Workshop for the UK Government's Farrell Review on Architecture and the Built Environment

Brian Webb was the main organiser for the CUPS 30th Anniversary Conference.

Brian Webb was invited to present on 'Regulatory Planning in a Comparative Perspective' at the Department of Civic Design, University of Liverpool.

Cecilia Wong was reappointed as a member of ESRC Peer Review College.

Cecilia Wong has been made an Expert Group Member of the UN-Habitat City Prosperity Index, Middle East Regional Centre of Best Practices and Local Leadership Programme, which is a regional partner of UN-Habitat.

Cecilia Wong became a Commissioning Panel Member for ESRC's 2013 Research Seminar Competition.

On-going and recently completed projects

Iain Deas and **Yasminah Beebeejaun**, working with MERCi, were awarded a three-year ESRC North West Training Centre doctoral studentship to explore 'meanwhile land' and the re-use of brownfield land in a context of weak property market conditions and dwindling public resources.

Iain Deas, Stephen Hincks, Brian Webb, and Andreas Schulze Bäing completed a project for Eurocities, exploring patterns of migration and mobility across urban areas in the European Union.

Graham Haughton, Cecilia Wong, Stephen Hincks and Brian Webb continue to provide the UK Department for Business, Innovation and Skills (BIS) with monthly commentary on regional employment, output and investment trends in the North West of England for use by ministers and policymakers in Whitehall.

Graham Haughton, Iain Deas, Stephen Hincks and Vivien Holt continue to explore 'Soft spaces, spatial planning and territorial management in Europe', a collaborative project led by HafenCity University Hamburg with partners at University Paris-Sorbonne, TU-Delft, Cambridge and Manchester with funding from the Hamburg Science Foundation.

Richard Kingston and Jenni Viitanen continue their research on the SMARTiP project (<http://www.smart-ip.eu/>). Funded by the EU's ICT Policy Support Programme, the Manchester component of the Smart Metropolitan Areas Realised through Innovation & People developed the Green Home Watch, a map-based crowd sourcing website that allows citizens to share their experiences of eco heating services and products.

Richard Kingston, Brian Webb, Vasilis Vlastaras and Miao Qiao are developing an online CUPS data map portal that will bring together the range of spatial data compiled and utilised by CUPS research.

Cecilia Wong and Mark Baker got a research grant for the development of an indicator monitoring framework and an information management system as well as transferable lessons on public participation for the Shantou City Master Plan (2012-2030), Nanjing University, China (£25,000).

Grant applications in the pipeline

Richard Kingston and Jenni Viitanen have submitted a bid to the Technology Strategy Board's "Future Cities Solutions" competition. Phase 1 of this bid (submitted in August 2013) is a feasibility study for a "Smart City Energy Map", working with six "future city test beds" in the UK. If successful, this paves the way to compete for Phase 2 which would entail building the tool over a period of 18 months based on the TellUs Toolkit platform.

Richard Kingston, Stephen Hincks, Brian Webb, and Vasilis Vlastaras are preparing a £200,000 bid to the ESRC's Secondary Data Analysis initiative, to develop an online tool that will allow users to utilise secondary data in order to create bespoke typologies of places.

Richard Kingston, Brian Webb, and Vasilis Vlastaras are preparing a bid to the NHS' Public Health Research (PHR) Programme to create a spatial mapping tool that will allow real-time health data to be mapped and analysed.

Cecilia Wong and Stephen Hincks have submitted a major ESRC-ORA Plus bid, with Universities of Trente, Phoenix, and Dortmund on Monitoring community quality of life for urban policy-making: A cross country comparative approach.

Brian Webb is preparing a £5,000 bid to the AHRC on 'Building Spatial Analysis Skills for Arts and Humanities Researchers' through the 'Collaborative Skills Development' call.

Conferences and public engagements

Bafarasat, A. and Baker, M. (2013) 'Localism and the removal of the English regional institutions: Implications for strategic policy integration and sustainable development'. Paper presented at the AESOP/ACSP Congress, UCD, Dublin, July 14-19th 2013.

Hebbert, M. (2013) 'Manchester 1945-1970: Time and Place', the PostWar Manchester symposium.

Hebbert, M. (2013) 'The Klimaatlas as a Planning Tool' Paper presented at the AESOP/ACSP Congress, UCD, Dublin, July 14-19th 2013.

Hincks, S. and Webb, B. (2013) 'Diversifying Spaces for the Delivery of Renewable Energy Infrastructure' Paper Presented at the Regional Studies Association European Conference, Tampere, Finland, 5-8 May.

Hincks, S. and Webb, B. (2012) 'Diversifying Spaces: Ports and the Delivery of Renewable Energy Infrastructure' Paper Presented at the 40th Anniversary Conference for 'Policy and Politics', Bristol, 18-19 September.

Hincks, S. (2012) 'The Definition and Application of Spatial Housing Markets' Seminar for the Korea Research Institute for Human Settlements, University of Manchester, Manchester, August (Invited).

Holt, V., Baker, M. and Hincks, S. (2013) 'Investigating Strategic Spatial Thinking in Local Infrastructure Planning Practice' Paper Presented at the Regional Studies Association European Conference, Tampere, Finland, 5-8 May.

Viitanen, J. (2013) 'ICT in sustainable neighbourhoods - the retrofit challenge in a post-industrial city'. Smart City Event 2013, Amsterdam, the Netherlands, 29-30 May 2013. (with Martine Tommis, Manchester City Council)

Viitanen, J. (2013) 'Challenging the orthodoxies of policy interventions in domestic heating and energy efficiency'. Energy Vulnerability Factors and Pathways - Towards a research and policy agenda. UK Energy Research Centre. 21-23 May 2013.

Viitanen, J. (2013) 'The rise and rise of the private rented sector - a Northern perspective on housing policy in England'. Paper Presented at the Regional Studies Association European Conference, Tampere, Finland, 5-8 May.

Webb, B. and Hebbert, M. (2013) 'The Use of Urban Climatology in Local Climate Change Strategies: A Comparative Perspective' Paper presented at the AESOP/ACSP Congress, UCD, Dublin, July 14-19th 2013.

Webb, B. and Hincks S. (2012) 'Territorial Crafting and the Role of Infrastructure: The Case of Offshore Wind Policy in Scotland' Regional Studies Association European Conference, TU Delft, Delft, The Netherlands, 14 May.

Sykes, O., **Webb, B.** and **Schulze-Baing, A.** (2013) 'Educating 'world professionals'? – the challenges of internationalisation and the planning curriculum', AESOP / ACSP Congress, Dublin Ireland, 17 July.

Wong, C. and **Qian, H.** (2013) Invited presentation 'Planning for rural transformation in rapidly urbanized regions: the case of Jiangsu province', China Planning Research Symposium, China Planning Research Group, Bartlett School of Planning, 31 May, University College London, London.

Wong, C. (2013) Invited plenary forum presentation 'The Mersey Basin Campaign 1985-2010: What did it achieve and how?', International Conference on River Basic Planning and Management, 27-28 May, organized by the Ministry of the Interior, Taiwan and the National Cheng Kung University, New Taipei City Government, Banqiao District, New Taipei, Taiwan.

Wong, C. (2013) Invited presentation 'A Map for England: Monitoring Spatial Synergies and Conflicts: Government Policies and Programmes in England', iCities 2013: Operating Sustainability, 24-25 May, National Cheng Kung University, Tainan, Taiwan.

Wong, C. (2013) Invited presentation 'Brownfield regeneration and the impact on urban development in England', 22 May, Graduate Institute of Urban Planning, National Taipei University, San Shia District, New Taipei, Taiwan.

Wong, C. (2013) Invited presentation 'Public Participation & Collaboration in Planning: research from the Centre for Urban Policy Studies', 21 May, Department of Landscape Architecture, Chung Yuan Christian University, Chung Li City, Taiwan.

Wong, C. (2013) Invited presentation 'Monitoring Complex Spatial Planning Policies: challenges and methods for Shantou Master Planning', ISOCARP (International Society of City and Regional Planners) and SFURP (NJU-UEPC Sino-French Centre for Urban, Regional and Planning Studies) Joint Seminar, 4-6 April, University of Nanjing, Nanjing.

Wong, C. (2013) Invited presentation 'Spatial Synergies and Conflicts: Monitoring Government Policies and Programmes in England', 13-15th March, the 8th International Workshop on Planning and Evaluation, University of Groningen, the Netherlands.

Wong, C. (2012) Invited presentation 'Research informed teaching: the role of policy research', iCities 2012 Planning Education Forum, 21st August, National Cheng Kung University, Tainan, Taiwan.

Wong, C. (2012) Invited presentation 'Globalisation and planning education', iCities 2012 Planning Education Forum, 20th August, National Cheng Kung University, Tainan, Taiwan.

Wong, C. (2012) Invited presentation 'Culture-led regeneration in Northwest England: the visitor economy strategy', at the "Moving Landscape, Renaissance of Great Palace Museum Area" 2nd Forum and Workshop on 'Planning for Tourism and Cultural Creative Industry in the National Palace Museum Park Area', 17th August, National Taipei University, Taiwan.

Wong, C. and **Baker, M.** (2012) Invited presentation 'Planning for development: the spatial approach', Nanjing Institute of Geography and Limnology, Chinese Academy of Sciences, 7 August, Nanjing

Wong, C., Baker, M., Hincks, S., Schultz-Baing, A. and Webb, B. (2012) 'Spatial Synergies and Conflicts: Government Policies and Programmes in England' Paper Presented at the 40th Anniversary Conference for 'Policy and Politics', Bristol, 18-19 September.

Wong, C. and Qian, H. (2013) 'Planning for Rural Transformation in Rapidly Urbanised Chinese Regions: the Case of Jiangsu Province' Paper presented at the AESOP/ACSP Congress, UCD, Dublin, July 14-19th 2013.

Publications

Baker, M. and Wong, C. (2013) 'The delusion of strategic spatial planning: what's left after the Labour government's English regional experiment?' *Planning Practice and Research*, 28(1), 83-103.

Barker, A. and Jones, C. (2013) 'A critique of the performance of EIA within the offshore oil and gas sector' *Environmental Impact Assessment Review* 43, 31-39.

Beebeejaun, Y. Durose, C, Rees, J, Richardson, J and Richardson, L. (In-press) 'Public harm or public value? Towards co-production in research with communities' *Environment and Planning C*.

Beebeejaun, Y. (2012) 'Including the Excluded? Changing understandings of ethnicity in contemporary English Planning' *Planning Theory and Practice* 13(4), 529-548.

Durose, C, **Beebeejaun, Y.**, Rees, J and Richardson, L. (2012) *Illuminating the evolution of community participation*. Swindon, AHRC Connected Communities.

Durose, C, **Beebeejaun, Y.**, Rees, J, Richardson, J & Richardson, L. 2012. *Towards Co-production in Research with Communities*. Swindon, AHRC Connected Communities.

Deas, I. and Doyle, J. (2013) 'Building community capacity under 'austerity urbanism': stimulating, supporting and maintaining resident engagement in neighbourhood regeneration in Manchester' *Journal of Urban Regeneration and Renewal* 6 (4): 365-380.

Deas, I. (2013) 'Towards post-political consensus in urban policy? Localism and the emerging agenda for regeneration under the Cameron government' *Planning Practice and Research*, 28 (1): 65-82.

Deas, I., Hincks, S., Webb, B., and Schulze Bäing, A. (2012) *Migration and geographical mobility in European cities*. Unpublished: Eurocities.

Haughton G. (2012) 'Planning and Growth.' In *Changing Gear*, ed. Ward M and Hardy S, 95-105. London: The Smith Institute.

Haughton, G., Allmendinger P. and Oosterlynck, S. (2013) 'Spaces of neoliberal experimentation: soft spaces, postpolitics and neoliberal governmentality' *Environment and Planning A* 45(1): 217-234.

Haughton, G. and Allmendinger, P. (2013) 'Spatial Planning and the New Localism' *Planning Practice and Research* 28a: 1-5.

Allmendinger, P. and **Haughton, G.** (2013) 'The Evolution and Trajectories of English Spatial Governance: 'neoliberal' episodes in planning' *Planning Practice and Research* 28(1): 6-26.

Counsell, D, **Haughton G.** and Allmendinger P. (2012) 'Growth management in Cork through boom, bubble and bust.' *European Planning Studies: in early view*.

- Haughton, G. and Hincks, S.** (2013) 'Austerity Planning' *Town and Country Planning*, 82 (1), 23-28.
- Hincks, S.** (2012) 'Understanding Change in Deprived Neighbourhoods: Towards an Integrated Spatial Framework'. London, Nuffield Foundation.
- Hincks, S. and Baker, M.** (2012) 'A Critical Reflection on Housing Market Area Definition in England' *Housing Studies*, 27 (7), 873-897.
- Hincks, S. and Baker, M.** (2013) 'Housing market areas and the strategic planning of housing in England', *Town Planning Review*, 84(1), 127-152.
- Hincks, S., Leishman, C. and Watkins, C.** (2013) 'Planning and Housing: concepts policy instruments and market analysis' *Town Planning Review*, 84 (1), 1-8.
- Hincks, S., Webb, B. and Wong, C.** (2013) 'Fragility and Recovery: Housing, Localities and Uneven Spatial Development in the UK' *Regional Studies* (in press)
- Sandham, L.A, van Heerden, A.J., **Jones, C.E.**, Retief, F.P. and Morrison-Saunders, A.N. (2013) 'Does enhanced regulation improve EIA report quality? Lessons from South Africa' *Environmental Impact Assessment Review* 38: 155-162.
- Richard Kingston** (in press) 'Public Participation in Geocomputation' in *Geocomputation: A Practical Primer*, ed. Chris Brunson and Alex Singleton, London: Sage.
- Cavan, G. and **Kingston, R.** (2012) 'Development of a climate change vulnerability and risk assessment tool for urban areas' *International Journal of Disaster Resilience in the Built Environment*, 3(3) : 253-269.
- Viitanen, J. and Kingston, R.** (forthcoming) 'Smart Cities and green growth – outsourcing democratic and environmental resilience to the global technology sector'. *Environment and Planning A*.
- Wong, C.** (2012), '指标的抉择：概念、方法与应用', *Urban Planning International (UPI)*, 27 (2): 4-15
[Chinese translation of 'Indicators at the crossroads: ideas, methods and applications', *Town Planning Review*, 74(3): 253-279.
- Wong, C. and Baing, A.** (2012) 'Brownfield residential development: what happens to the most deprived neighbourhoods in England?' *Urban Studies*, 49(14): 2986-3005.
- Wong, C., Jones, C., Coombes, M.** (2012) 'A System of National Tiered Housing Market Areas and Spatial Planning' *Environment and Planning B: Planning and Design*, 39(3):518 – 532.
- Wong, C. and Qian, H.** (2012) 'Master Planning under Urban-Rural Integration: the case of Nanjing, China?' *Urban Policy and Research*, 30(4): 403-422.
- Wong, C. and Rae, A.** (2012) 'Monitoring spatial planning policies: towards an analytical, adaptive and spatial approach to a wicked problem', *Environment and Planning B: Planning and Design*, 39: 880 – 896.
- Wong, C., Baker, M., Hincks, S., Schultz-Baing, A. and Webb, B.** (2012) 'Why we need to think strategically and spatially', *Town and Country Planning*, 81(10), 437-440.
- Wong, C., Baker, M., Hincks, S., Schultz Baing, A. and Webb, B.** (2012) 'All Mapped Out?' *New Start*, 501, 14-15

CONTACT

Centre for Urban Policy Studies
School of Environment, Education and Development
Humanities Bridgeford Street Building
Room 1.34
The University of Manchester
Oxford Road, Manchester M13 9PL

Email: cups@manchester.ac.uk
www.sed.manchester.ac.uk/research/cups/

Centre for Urban
Policy Studies

CUPS