

# Research at Whiteley Village

Dr Alison Armstrong  
Project Director, The Whiteley Foundation for Ageing Well



Whiteley Village  
*A century of caring for the elderly*

# Intention of Whiteley Village

- To provide housing and care for the elderly poor



## History of Whiteley Village

- £1million left by William Whiteley in 1907
- 225 acres purchased near Walton-on-Thames, Surrey
- Village built, and first resident moved in October 1917

# Whiteley Village Today

- 262 cottages
- 51 extra care apartments
- Nursing, residential and care at home services, and a new care hub opening in 2019
- 500 residents
- Aged 65-106



- Village hall



- Church(es)



- Social club



- Shop/Post office



- Hair salon

- Library



- Bus service

- Museum



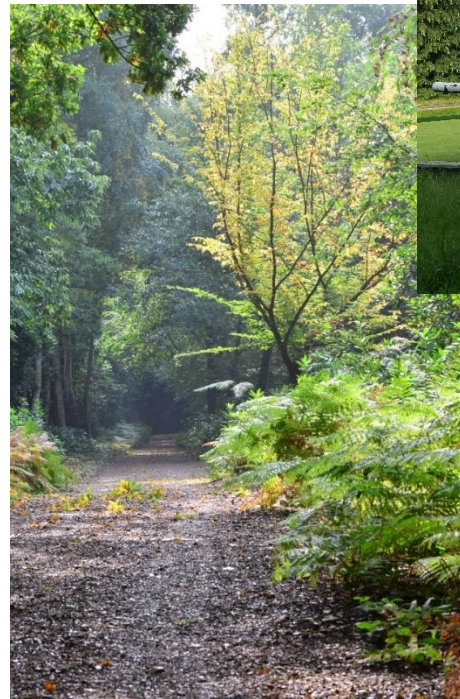
- Putting green and 9 hole golf course



- Bowling Green



- Woodland walks and fishing lake



- Hydrotherapy pool

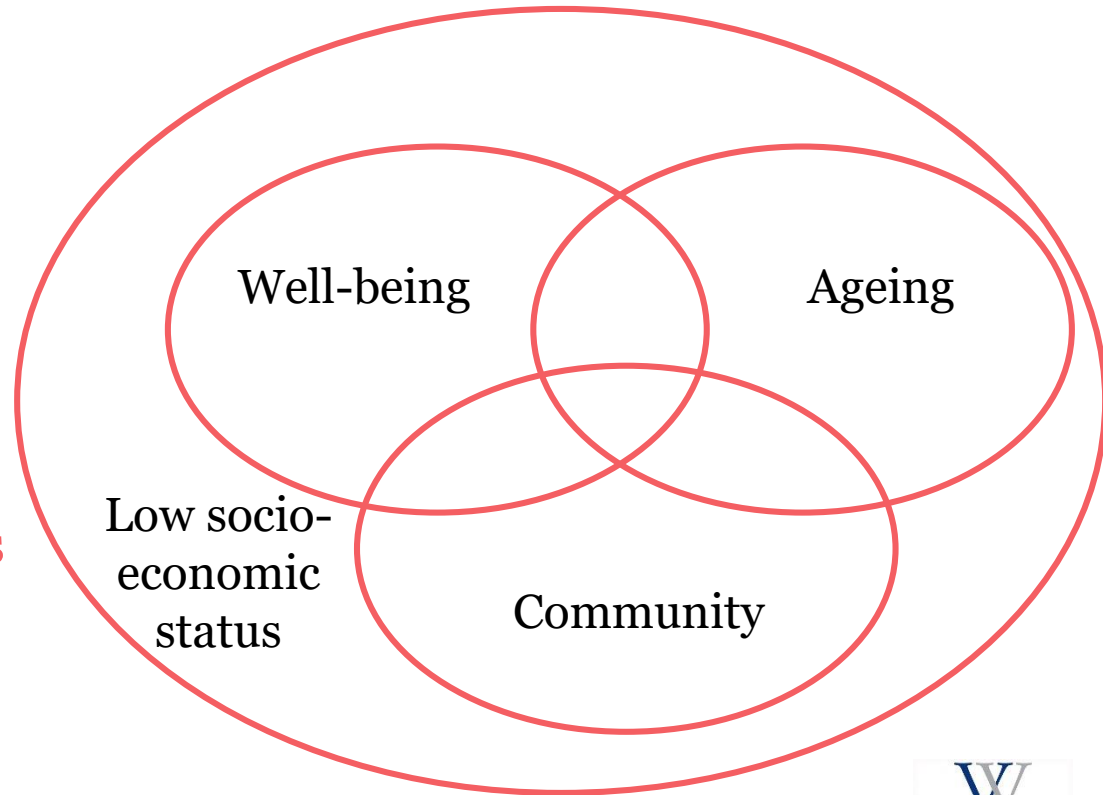
# Village Life

- 23 clubs and societies run by villagers, including
  - Photography
  - Allotment association
  - Art
  - History club
  - Line dancing
  - Mah Jong
  - Golf/putting
  - Bowls
  - Scrabble
  - Theatre goers
  - Social club
  - Archery



# The Whiteley Foundation for Ageing Well

- Aim: To contribute to the national conversation on ageing well
- How:
  - By collaborating on research projects
  - By sharing our data
  - By offering the use of our facilities
  - By facilitating interested villagers/staff/volunteers in being involved in research



# Possible Links with MICRA

Resilience

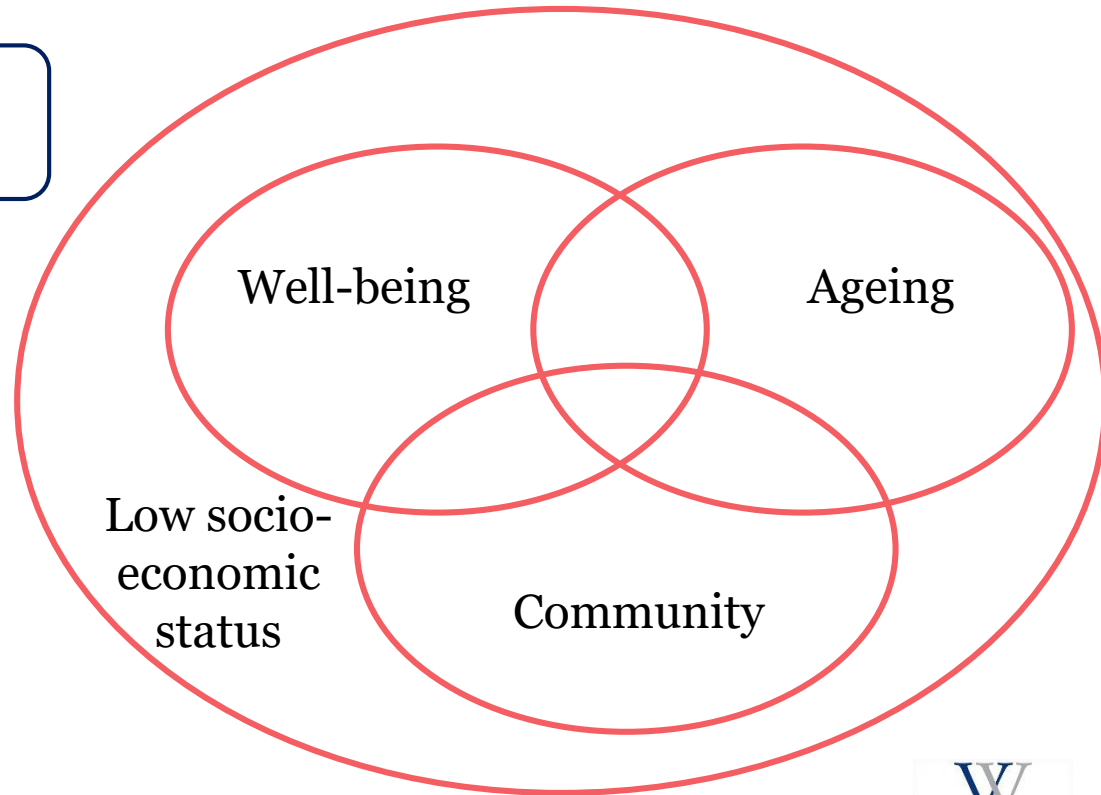
Housing

Care provision

Technology

Dementia

Others?





# Completed Research

- The RIPE Project: Research Interventions that Promote Ethics in Social Care (University of Surrey)
- Exploring Care During a Period of Transition (University of Surrey)
- Does Living in a Retirement Village Extend Life Expectancy? (CASS Business School)

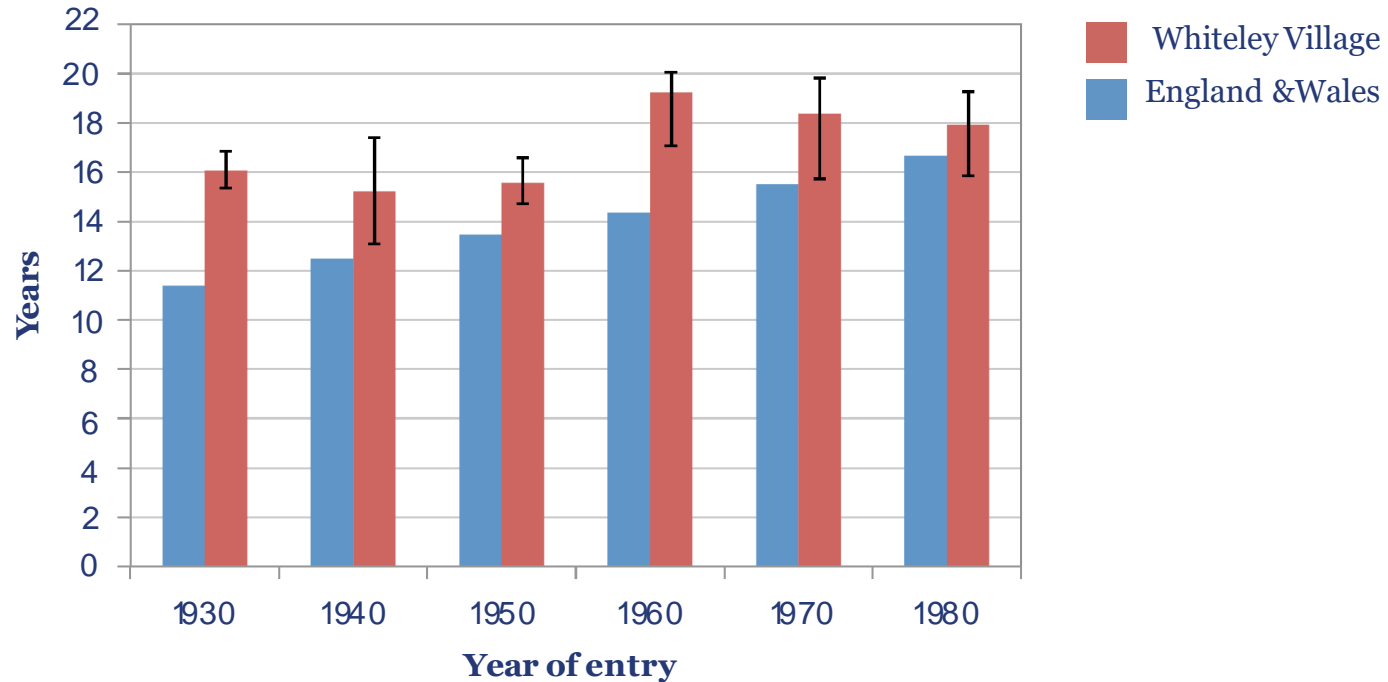


**CASS**  
BUSINESS SCHOOL  
CITY UNIVERSITY OF LONDON  
EST 1894

# Longevity Research

- Women's longevity statistically equivalent to quintile 1 or 2, rather than 5
- Men live as long as the average in society

Female median life expectancy at 67 with 90% confidence intervals



# Current Operational Challenges

- Probable reduction in state support for residents
- Resident needs (including cognitive decline, mental health issues, and co-morbidity) VS. paid staff capacity – gap is growing
- Whole village getting older
- Staffing
- Relationship with local NHS providers (CCG, GP etc)
- Intergenerational/family interactions
- Conflict between government priorities and policies

# Current/Potential Research

- Loneliness (Middlesex University/Metanoia Institute/Hobbs)
- Health Monitoring (University of Surrey)
  
- Longitudinal Study
- Well-being in relation to use of outdoor space
- Community engagement
- Counsellor intervention
- Nutrition/malnutrition
- Technology
- Well-being and adjustments during transitions
  
- PhD/MSc/Clinical students
- Co-investigator
- Commercial research
  
- Foundation Steering Group
- Coffee and Conversation



**What thoughts does this trigger for you?**

**What collaborations might be possible?**

**What questions do you have?**

**Dr Alison Armstrong, Project Director**  
**[alison.armstrong@whiteleyvillage.org.uk](mailto:alison.armstrong@whiteleyvillage.org.uk)**

**01932 503909 / 07432 123012**



Whiteley Village

*A century of caring for the elderly*