

Working with academics and researchers – a local government perspective



Paul McGarry and Jane Morris
Manchester Joint Health Unit 15th February 2011

Overview



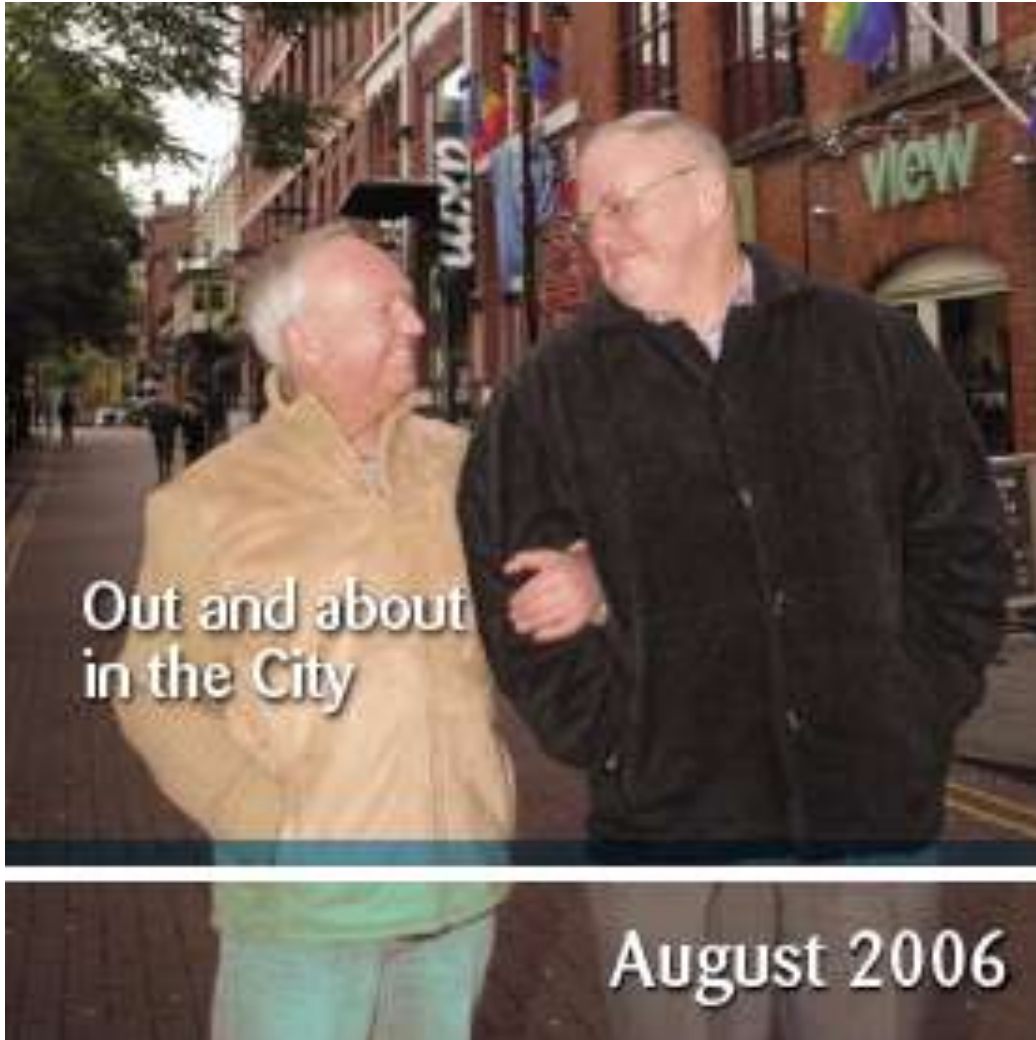
- About Valuing Older People
- About Manchester: ageing in cities
- Working with researchers
- Reflections: and
- Opportunities

About Valuing Older People



- Part of Manchester Joint Health Unit
- 2004 Strategy to improve the Quality of Life of Older Citizens
- VOP team functions
 - Strategy development
 - Engagement
 - Research and policy
 - Resource procurement
 - Programme Management
- 2009 Ageing Strategy
- 2010 Global Network of Age-friendly Cities

Features of the Manchester approach

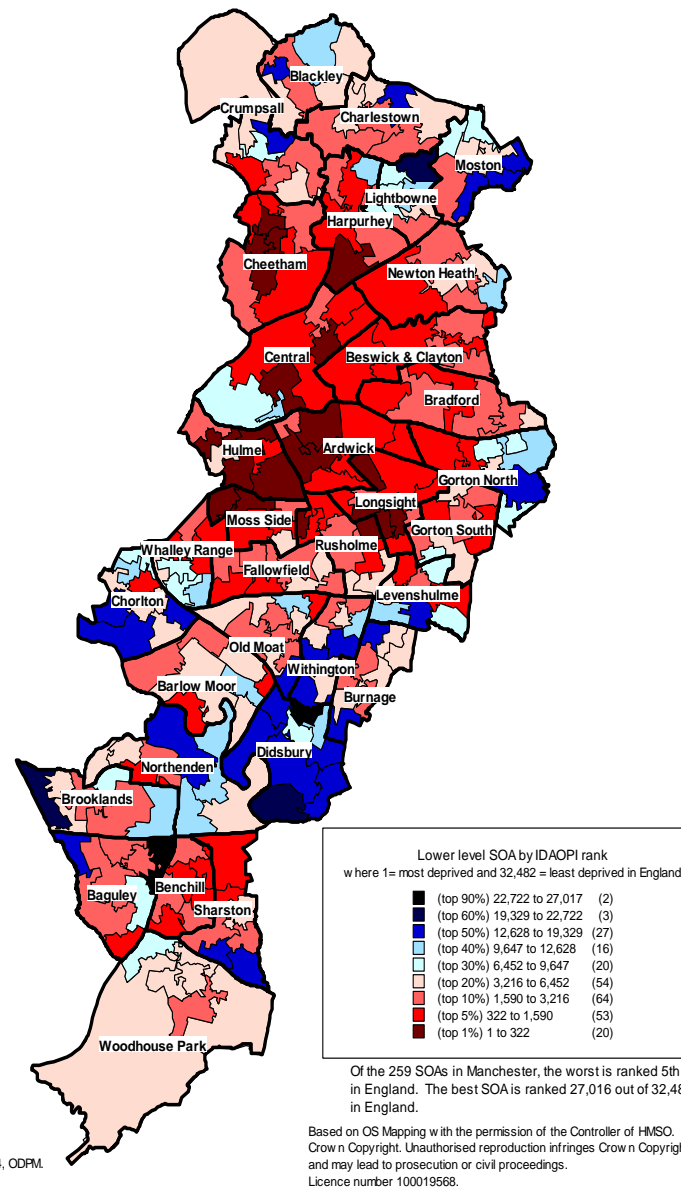


- Working with older people as citizens and peers, across sectors
- Developing communities of interest, partnerships, activities and community life
- Board, Forum, Participation fund, Small grants, Positive images and Communications
- Local Networks

A tough patch

- Population \approx 450,000
- 1 of 10 Metropolitan Authorities (pop 2.6 m)
- Unusual older population, due to inner-city patterns of migration
- High levels of pensioner poverty, ill-health, disability ...
- High number of BME elders

Income deprivation affecting older people index (IDAPOI)



Ageing in the city

“... an outward migration of affluent people in their 50s and 60s who choose to leave ... the remaining ... poorer, isolated and more vulnerable with a lower life expectancy and a need for acute interventions”

Audit Commission 2008



Ageing in the city

- ...emerging evidence that urban environments place older people at risk of isolation and loneliness affected by changes in:
- **spaces** developed to meet others' needs;
 - **population** with loss of family, friends and neighbours affecting relationships;
 - services and levels of crime/other **social issues**

Scharf and Gierveld 2008

Working with academics and researchers – overview

- Who we work with
- Understanding ageing in Manchester
 - Conceptual
 - National policy
 - Everyday lives of older people
- Policy and case-making
- Changing cultures
- Attracting resources to the city – a site for research



Who we work with

- Universities
- Age-sector groups
- WWOP journal
- Charities and foundations
- Research Institutes
- Sociologists
- Psychologists
- Architects
- Designers
- Older people



Understanding ageing in Manchester

- Conceptual and theoretical perspectives
- National and local policy and programmes
 - Commentary and analysis
- Everyday lives of older people

“I just in this flat staring at the television or the walls. You get to a point where you think I can't cope: I mean you think what's the point being stuck in this flat day in day out.”

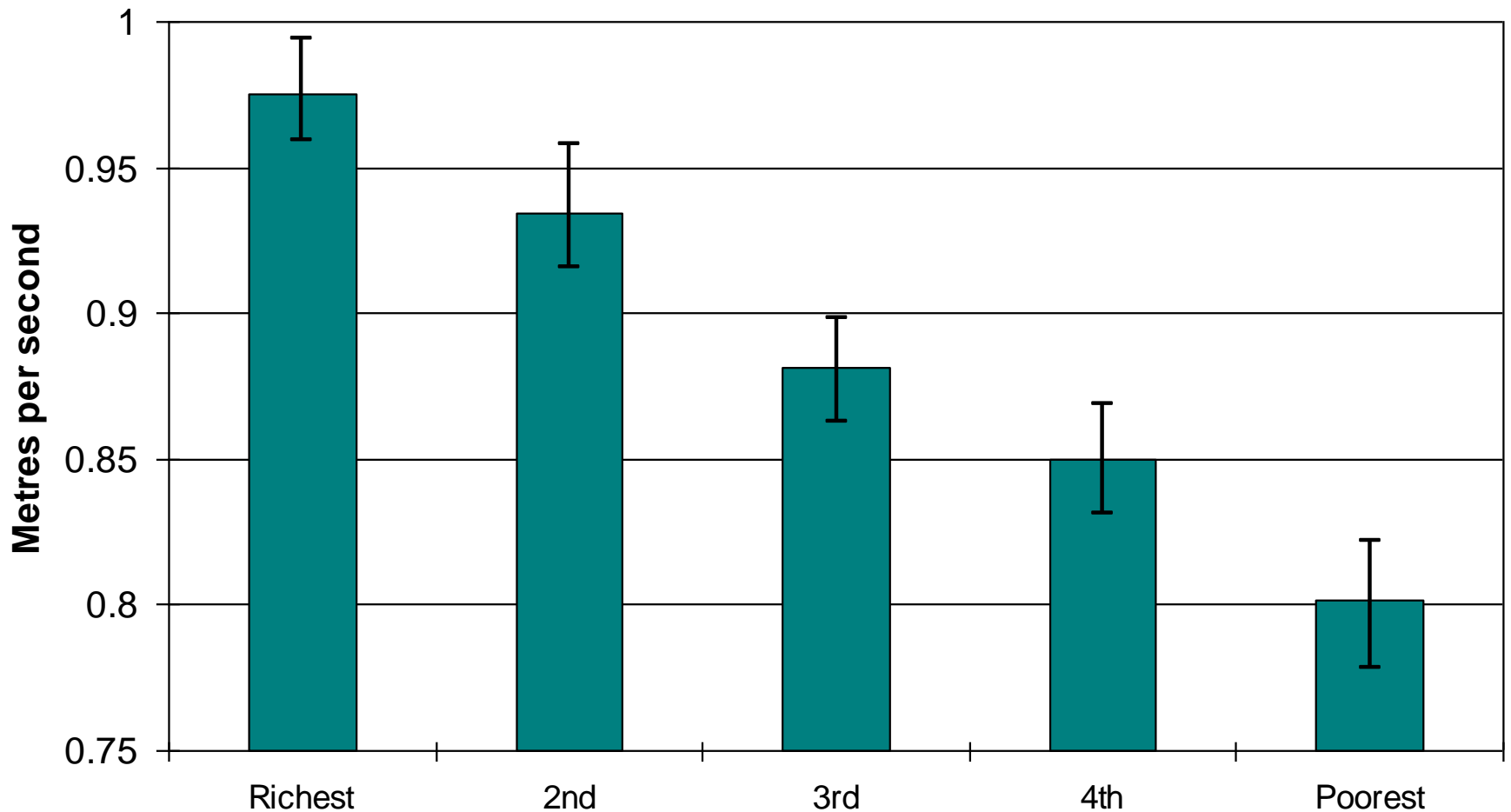
Female, 51, West Gorton

Developing policy and case-making

- Growing Older Programme
- New Dynamics of Ageing - Call-Me
- Manchester POPP evaluation
- 50plus Worklessness
- The Community Choir
- Manchester BME elders



Persistent inequalities in later life: eg 60+ mean walking speed and wealth



English Longitudinal Study of Ageing



Changing cultures

- The Age Debates
- ESRC Festival
- Unequal Ageing
- Facing the Future seminar
- MSA – Sharing the City
- LARCI publication



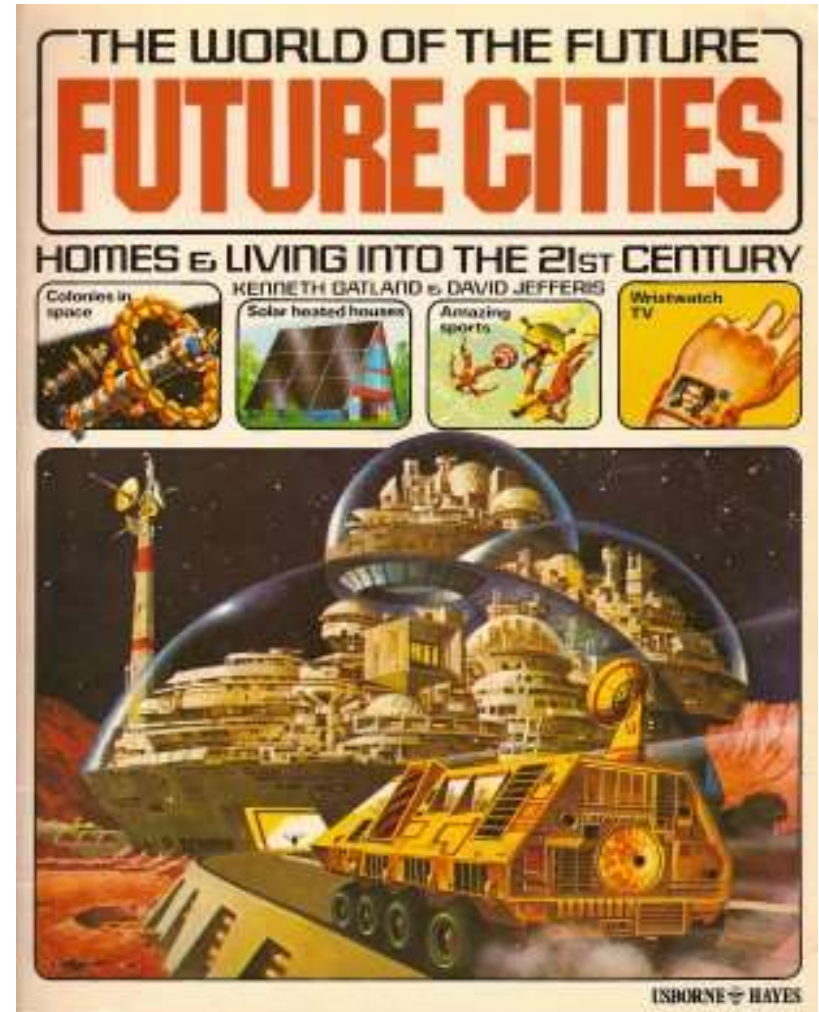
Attracting resources to the city – a site for research

- “A place to do business”
- When research funds services
- Ageing Studies for staff and residents
- Studentships
- Advisory Board
- WHO status



Some reflections.....

- Shared values and perspectives
- Understand and respect our respective worlds
- Clear outcomes for all partners
- In the age of austerity.....



And some opportunities



- New Public health strategy
- “Permeable” team
- Falls prevention
- Research bids
- The Age-friendly campus in an age-friendly city
- Baby-boomers
- Ageing industries

Reading and background material

- “Older people – building a strategic approach” BGOP/Audit Commission 2004 ([www.audit commission.gov.uk](http://www.auditcommission.gov.uk))
- “Beyond the tick box” Policy Studies Institute/BGOP 2007 (www.psi.org.uk)
- Older People’s Shared Priority reports 2007 IDEA (www.idea-knowledge.gov.uk)
- “Don’t stop me now” Audit Commission 2008 (www.audit commission.gov.uk)
- Manchester Valuing Older People programme:
http://www.manchester.gov.uk/info/500099/valuing_older_people/3428/valuing_older_people_vop
- Manchester Ageing Strategy
http://www.manchester.gov.uk/downloads/file/11899/manchester_a_great_place_to_grow_older_2010-2020
- “From Sidelines to Centre Stage” Manchester Valuing Older People Board, 2010
- Ageing in Cities conference report and presentations, Manchester City Council, 2010
http://www.manchester.gov.uk/info/500099/valuing_older_people/3428/valuing_older_people_vop/2

Thank you

p.mcgarry@manchester.gov.uk

j.morris1@manchester.gov.uk

www.manchester.gov.uk/vop

