

The University of Manchester
Brooks World
Poverty Institute

MANCHESTER
1824

Inequality, income and poverty: comparative global evidence

Augustin Kwasi Fosu¹

¹ UN University-World Institute for
Development Economics Research
(UNU-WIDER), Helsinki, Finland

Fosu@wider.unu.edu

December 2010

Brooks World Poverty Institute
ISBN : 978-1-907247-39-2

BWPI Working Paper 140

Creating and sharing knowledge to help end poverty

www.manchester.ac.uk/bwpi

Abstract

Analysing a large sample of 1980-2004 unbalanced panel data, the current study presents comparative global evidence on the role of (income) inequality in poverty reduction. The evidence involves both an indirect channel via the tendency of high inequality to decrease the rate at which income is transformed to poverty reduction, and the tendency of rising inequality to increase poverty. Based on the basic-needs approach, an analysis-of-covariance model is estimated, with the headcount measure of poverty as the dependent variable, and the Gini coefficient and PPP-adjusted mean income as explanatory variables. The study finds that the responsiveness of poverty to income growth is a decreasing function of inequality, and that the income elasticity of poverty is actually smaller than the inequality elasticity. Thus, income distribution can play a more important role than might be traditionally acknowledged. Found also is a large variation across regions (and countries) in the poverty effects of inequality.

A version of this paper has been accepted for publication in *Social Science Quarterly*.

Keywords: inequality, income, poverty, comparative global evidence

Augustin Fosu is Deputy Director, UN University-World Institute for Development Economics Research (UNU-WIDER), Helsinki, Finland; honorary Research Fellow, Rural Development Research Consortium, University of California-Berkeley, USA; and honorary Research Associate, Brooks World Poverty Institute, The University of Manchester, UK.

1. Introduction

As Goal 1 of the Millennium Development Goals (MDGs), halving poverty by 2015, enjoys a major emphasis in the international discourse, poverty has now become a subject of global interest. Since the 1980s, the poverty rate has been trending considerably downward globally (World Bank, 2006a). Growing attention has also been paid to the importance of income distribution in poverty reduction (e.g., Bruno et al., 1998; World Bank, 2006b). At the country level, a number of studies have decomposed the effects of inequality and income on poverty (e.g., Datt and Ravallion, 1992; Kakwani, 1993). Both Datt and Ravallion (1992) and Kakwani (1993) estimate substantial contributions by distributional factors as well as by growth. Regionally, based on cross-country African data, Ali and Thorbecke (2000) find that poverty is more sensitive to income inequality than it is to income.

Several papers, furthermore, emphasise the importance of inequality in determining the responsiveness of poverty to income growth (e.g., Adams, 2004; Easterly, 2000; Ravallion, 1997). Based on the specification that growth elasticity of poverty decreases with inequality, Ravallion (1997) econometrically tested the 'growth-elasticity argument' that while low inequality helps the poor share in the benefits of growth, it also exposes them to the costs of contraction. Similarly, Easterly (2000) evaluated the impact of the Bretton Woods Institutions' programmes by specifying growth interactively with the level of inequality in the poverty-growth equation, and found that the effect of the programmes was enhanced by lower inequality. Moreover, emphasising the importance of the definition of growth, Adams (2004) nonetheless provides elasticity estimates showing that the growth elasticity of poverty is larger for the group with the smaller Gini coefficient (less inequality).¹ Most recently, Fosu (2008; 2009; 2010) make similar observations for the Africa region.

Despite the above and other related studies, there appears to be limited recent comprehensive comparative global evidence on the effect of inequality on poverty that sufficiently delineates the role of inequality in poverty reduction presented in the present study.² Based on the headcount ratio, the paper, first, presents comparative global evidence on trends in the poverty rate for the major regions of the world: East Asia and Pacific (EAP), Europe and Central Asia (ECA), Latin America and the Caribbean (LAC), Middle East and North Africa (MENA), South Asia (SAS),

¹ We adopt the convention of an *absolute-valued* elasticity.

² The few recent exceptions include Kalwij and Verschoor (2007). However, that study is based on a smaller and earlier sample that ends in 1998. Besides, the Kalwij and Verschoor article is on the \$2-per-day headcount ratio, which is arguably a less desirable poverty measure than the \$1 standard for policy purposes currently. Nor does that study explore possible country-specific differences implied in the present article by providing interval estimates per region for the elasticity measures. Fosu (2009) attempts to fill this gap, but it is only for sub-Saharan Africa.

and sub-Saharan Africa (SSA). The focus is on the \$1 standard, which has arguably emerged as the most important yardstick for measuring poverty, as apparent in the case of the MDGs and other related global debates on improving the lives of the poorest countries of the world. The paper then estimates an analysis-of-covariance model of the poverty-income relationship, where the level of inequality enters both independently and interactively with income. Using unbalanced panels over 1980-2004,³ the fully specified and constrained versions of this model are estimated for the global sample as well as for the regional samples, in order to appropriately assess the impact of inequality on poverty, with both regional and country-specific implications.

2. Trends in poverty

Based on the most recent World Bank data,⁴ Table 1 and Chart 1 shed light on the global and regional trends in the headcount-ratio measure of poverty for the \$1-per-day (\$32-per-month) standard. These data show that the global poverty rate has trended downward steadily since the 1980s, falling from 43.8 percent in 1981 to 17.9 percent in 2005. There are regional differences, however. The greatest decline is exhibited by the EAP, whose poverty rate has fallen from 69.5 percent in 1981 to only 10.8 percent in 2005. Similarly, though less dramatically, SAS's poverty has also declined from 45.8 percent in 1981 to 27.3 percent in 2005. In contrast, SSA's poverty rate has hardly budged, falling only marginally from 44.7 percent in 1981 to 42.1 percent in 2005. Meanwhile, poverty in the ECA, LAC and MENA has been historically quite low (less than 10 percent), with MENA's and LAC's poverty rates trending downward and ECA's slightly upward.

There also appear to be regional differences in the inter-temporal behaviour of the trends in the poverty rate. For example, most of SAS's poverty reduction had occurred by the early 1990s, with little progress in the 1990s; the rate fell only marginally from 33.1 percent in 1993 to 30.2 percent in 2002, before declining to 27.3 percent in 2005 (Table 1; Chart 1). In contrast, EAP's poverty rate fell steadily, while SSA's progress on poverty did not begin until the mid-1990s. The poverty rate increased for SSA from the early 1980s, reaching a peak of about 50.0 percent in the late 1990s, before falling to 42.1 percent in 2005. Since 1996, however, SSA's poverty rate has fallen by 8.2 percentage points compared with SAS's of 5.8 percentage points,

³ Details of the data used in the estimation will be presented in the data and estimation section.

⁴ Source: World Bank, 2009. This is a revised database and is a sequel to World Bank (2007); it uses a different purchasing power parity (PPP) adjustment and extends the sample size by about 20 percent. We employ these new data for the descriptive analysis, but the older version for the actual estimation, in order to more appropriately compare our results with those of existing studies; see Fosu (2009) for a review of such studies.

translating to 16.3 percent and 17.5 percent, respectively. Hence, beginning in the mid-1990s, SSA has performed as well as SAS in reducing poverty, as measured by the \$1 headcount ratio, for instance.⁵

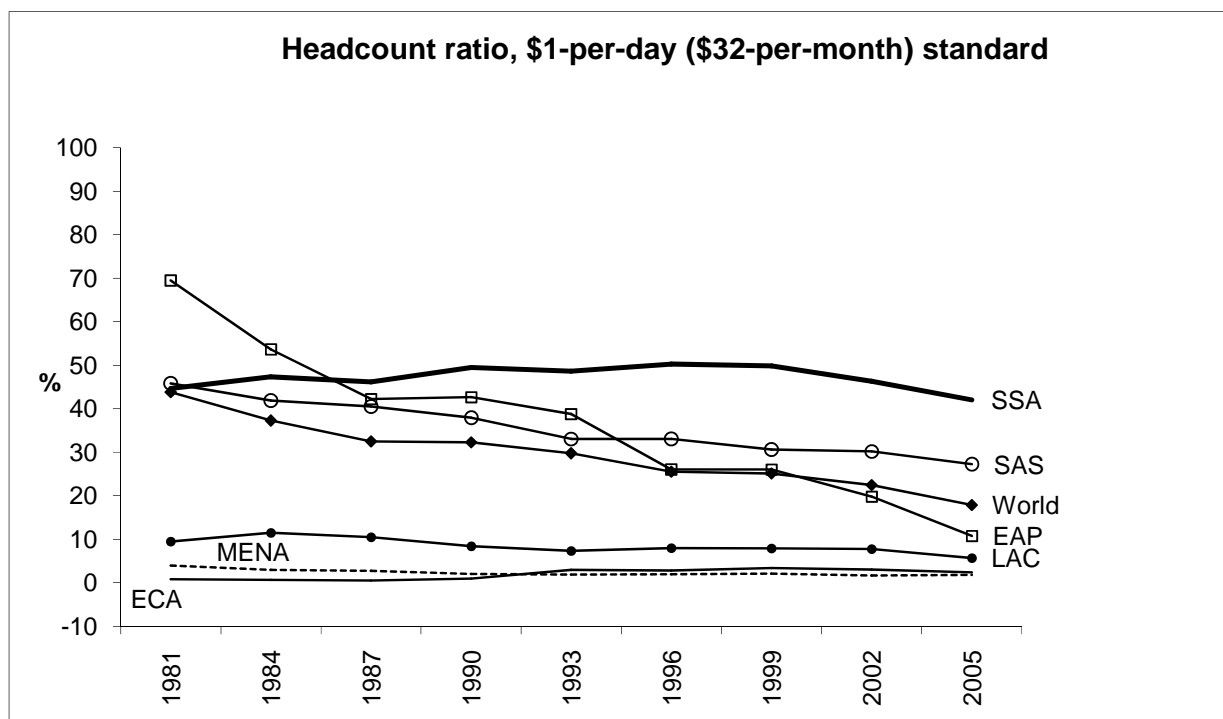
Table 1: Global trends in poverty (%; headcount ratio; \$1 standard)

Region/year		1981	1990	1996	2005
East Asia and Pacific	EAP	69.47	42.69	26.05	10.84
Europe and Central Asia	ECA	0.86	1.03	2.85	2.45
Latin America and the Caribbean	LAC	9.53	8.46	8.05	5.72
Middle East and North Africa	MENA	4.04	2.09	1.99	1.89
South Asia	SAS	45.84	37.96	33.06	27.28
Sub-Saharan Africa	SSA	44.73	49.49	50.28	42.06
World	World	43.83	32.3	25.56	17.91

Notes: (Source: World Bank, 2009) For comparability, the data reported in this table are for \$32 per month 2005-PPP adjusted income and are selected to correspond to the \$1 poverty rates from World Bank (2007). Hence, the rates reported here are similar to those used in the subsequent regression analysis but are smaller than the rates at the World Bank's \$1.25 new standard.

⁵ Based on similar data (World Bank, 2007), Fosu (2009, Table 1) actually reports higher poverty rates (headcount ratio) at the \$2 level for SAS than for SSA throughout 1981-2004. Though SAS decreased the gap substantially, the catch-up rate since the 1990s has been relatively minimal. In 1993, for instance, SAS's poverty rate exceeded SSA's by six percentage points; by 2004, about a decade later, this difference had been cut by only one percentage point, with the SAS and SSA's poverty rates standing at 77.1 percent and 72.0 percent, respectively (ibid.).

Chart 1: Poverty trends, globally and by region, 1981-2005



Notes: EAP=East Asia and Pacific; ECA=(Eastern) Europe and Central Asia; LAC=Latin America and the Caribbean; MENA=Middle East and North Africa; SAS=South Asia; SSA=Sub-Saharan Africa (source: World Bank, 2009).

3. The estimating model

To arrive at the estimating model we follow, for instance, Fosu (2008). An individual is said to be 'poor' if his/her income falls short of 'basic needs' in a given locality.⁶ Moreover, the lower the level of income is, the more likely that it will fall below basic needs and put the individual into poverty. Thus the 'poverty function' can be expressed as decreasing in income. Furthermore, inequality can play a role in the poverty function, in that a more equitable distribution of income

⁶ For proponents of the basic-needs approach see, for example, Hicks and Streeten (1979), Streeten (1977), and Adelman (1975); however, Goldstein (1985) and Ram (1985) suggest a 'trickle-down' approach to growth. Being qualitatively below basic needs (the poverty line) would be measured here by the headcount ratio, P_0 ; however, other related measures include the 'poverty gap', P_1 , which indicates how far below, as well as the 'squared gap', P_2 , which measures how severely below income on average is below basic needs (see Foster, Greer and Thorbecke [1984], hereafter FGT).

would generally imply lower poverty. Thus, poverty would be a function of both income and inequality. A rudimentary specification of the poverty function might then entail the following equation:

$$(1) \quad p = b_1 + b_2y + b_3g$$

where p is the poverty rate, y is mean income, g is the Gini coefficient as a measure of inequality, and all variables are expressed in logarithm. As the respective income and inequality elasticities of poverty, b_2 and b_3 are expected to be negative and positive, respectively; growth is anticipated to decrease poverty and an increase in inequality should raise it.

Equation (1) corresponds to the Dollar and Kraay (2002) proposition that all income groups benefit proportionately from growth, which implies a uniform distribution of the effectiveness of growth, with no special role for inequality in the growth impact. Indeed, this equation has been estimated by others as well (see, for example, Ali and Thorbecke, 2000).

As argued in several studies (e.g., Adams, 2004; Easterly, 2000; Fosu, 2008; Ravallion, 1997), however, the rate by which income growth is transformed into poverty reduction would also depend on the level of inequality, in that less poverty reduction would result from a given rate of growth if inequality was higher. Thus, as in Fosu (2008), for example, we postulate the following equation as the main model of interest:⁷

$$(2) \quad p = c_1 + c_2y + c_3gy + c_4g$$

where, as already defined, p is the poverty rate, y is mean income, g is the Gini coefficient as a measure of inequality, with all variables expressed in logarithm. Here, the coefficients of interest are c_2 , c_3 and c_4 . The sign of c_2 , which is the independent impact of y (with $g=0$), is anticipated to be negative, since growth reduces poverty when there is a near-perfectly equal income distribution. However, c_3 is expected to be positive. This is because c_3 represents the effect of g on the impact of y ; as g rises and income distribution becomes less equal, the (negatively signed) effect of income on poverty is reduced. Finally, the sign of c_4 is anticipated to be negative, that is, an increase in inequality would decrease poverty when y is zero. This anticipated result may seem counter-intuitive, but the rationale is that in the case where nearly

⁷ See Fosu (2008) for details of the actual derivation of equation (2) based on the Cobb-Douglas function. Alternatively, one could estimate a poverty equation given the assumption that the income distribution is lognormal, as in Bourguignon (2003), Epaulard (2003), Fosu (2009), and Kalwij and Verschoor (2007), for instance. However, such a specification may be too constraining, given a specific nature of the income distribution. Actually, even though the present specification is simpler, the fit of a similar model (in growth rates) does not seem to differ appreciably from the more complicated model based on the lognormal distribution (see Fosu, 2009). The use of the present model in levels (rather than growth rates), however, increases the usable sample size and is, therefore, capable of yielding relatively efficient estimates.

everyone is poor (near-zero y), redistribution from the non-poor to the poor is likely to render more people poor (Fosu, 2008).⁸ As the estimated results will show, however, the income level is sufficiently large for all regions, so that increasing inequality practically raises poverty.

From equation (2), the income impact on poverty, which is the income elasticity of poverty, is obtained as:

$$(3) \quad E_y = c_2 + c_3g$$

Similarly, the partial effect of inequality on poverty, the inequality elasticity of poverty, is expressed as:

$$(4) \quad E_g = c_4 + c_3y$$

We discuss first equation (3). Since c_2 is anticipated to be negative, the sign of E_y should be negative as well (provided g is not too large), so that an increase in y should reduce poverty; however, the rate of poverty reduction is attenuated by increases in g at the rate of c_3 (the sign of c_3 is expected to be positive). As will become apparent, E_y is negative for all regions, as expected, though its value differs substantially across regions.

Similarly, according to equation (4), while initially negative at very low levels of y (the anticipated sign of c_4 is negative), E_g is expected to be positive at reasonably large levels of y . As the subsequent results from the estimation will show, E_g is positive for all regions, suggesting that rising inequality would increase poverty, as one would expect. Furthermore, the inequality impact increases with income and is found to differ considerably across regions.

4. Data, estimation and results

4.1 The data

As already indicated above, the data used in the estimation are derived from a global sample (source: World Bank, 2007), which provides 456 useable unbalanced panel observations over 1980-2004 generally.^{9, 10} Country representation in the sample differs substantially, depending

⁸ Note that the measure of poverty in the current instance is the headcount ratio. Thus it is easy to see that, where the mean income is low, the distribution will be concentrated close to the poverty line, so that redistribution from the non-poor to the poor is likely to put the former below the line.

⁹ The summary statistics are shown in Appendix Table A1. Note that two observations, both for India (rural and urban), are for 1977-78. We prefer to use the World Bank (2007) database for the actual estimation, in order to be able to compare our results with those of existing studies (for a review of related studies see, for instance, Fosu, 2009). In contrast, to the best of our knowledge, no comprehensive published studies based on this more recent World Bank (2009) database currently exist for comparison purposes.

on the availability of survey data, with China and India having the greatest representation. To provide comparability across countries, the same poverty line, \$32.74 per month (translating roughly to the international standard of \$1 per day in real 1993 PPP-adjusted dollars), is applied to all countries and over time. The headcount ratio is analysed using the above equations.

The Appendix Table A1 presents the summary statistics for the global and regional samples employed in the regression analysis. The results, though representing non-weighted statistics based on World Bank (2007), are roughly similar to those shown in Table 1, which are population-weighted and based on World Bank (2009).¹¹ The only aberration appears to be MENA, where the summary statistics show a much higher value for poverty than in Table 1. This discrepancy is explained primarily by the relatively high level of poverty in Djibouti, a tiny country, whose value apparently pulls the non-weighted mean upward for MENA.

4.2 Estimation and results

Equations (1) and (2) are estimated using both Random Effects (RE) and Fixed Effects (FE). While RE results are more (statistically) efficient than those of FE, they are prone to biases if unobservable country-specific factors are present and are correlated with the explanatory variables. Hence, the FE results are preferable unless efficiency is a problem, which seems unlikely in the present case due to the large sample size. Nonetheless, both the RE and FE results are presented in Table 2 and the Hausman test statistic is also provided in each case to indicate if the RE estimates are statistically different from those of the FE. The results are presented for the global sample and for each of the six regions.

From Table 2, we observe that the signs of the coefficients are as anticipated. In the simpler specification (A.1 and B.1 models), for example, the y and g coefficients are significantly negative and positive, respectively, in all equations estimated. Thus, income growth would decrease poverty, while a higher level of inequality would increase it. Furthermore, the coefficient of y is negative, implying that income growth would reduce poverty. However, the g coefficient is also negative, suggesting that an increase in inequality would *reduce* poverty when y is small. As argued above, this is what one would expect, given that in a very-low income country, redistributing from haves to have-nots might actually put more people into poverty, thus

¹⁰ Solt (2009) reports an impressive database of income inequality designed to be inter-country comparable; however, for the current analysis we prefer to use the World Bank inequality data, for two reasons. First, the Bank's inequality data are based on PPP-adjusted income data in a similar fashion as the mean income and poverty line designed to make them inter-country and inter-temporally comparable for poverty analysis. Second, the Bank's data contain a significant number of rural and urban observations, especially for China and India, which are not available in the Solt database.

¹¹ This observation suggests that World Bank (2007) and World Bank (2009) may not be that far apart in terms of descriptive statistics, lending some further credence to the reliability of the current estimates based on the former.

Table 2: Inequality, income and poverty – regression results, global and by region

I. Global (n=456)	Y	g	y*g	const	AR²	SEE	H
A. Fixed effects							
(A.1)	-2.477 (-12.96)	3.502 (7.98)	---	---	0.931	0.432	---
(A.2)	-12.62 (-6.60)	-8.321 (-3.90)	2.681 (5.33)	---	0.946	0.382	---
B. Random effects							
(B.1)	-2.283 (-22.69)	3.474 (12.32)	---	-0.196 (-0.20)	0.801	0.732	5.12 [0.08]
(B.2)	-12.307 (-9.45)	-8.639 (-6.00)	2.667 (7.89)	45.254 (8.19)	0.891	0.543	10.62 [0.01]
II. East Asia and Pacific, EAP (n=66)							
A. Fixed effects							
(A.1)	-2.950 (-12.05)	3.042 (7.98)	---	---	0.980	0.228	---
(A.2)	-1.868 (-0.96)	4.306 (1.82)	-0.305 (-0.56)	---	0.980	0.229	---
B. Random effects							
(B.1)	-2.827 (-13.00)	2.85 (6.82)	---	4.506 (4.83)	0.941	0.393	0.90 [0.64]
(B.2)	-3.409 (-1.86)	2.132 (0.97)	0.167 (0.33)	6.995 (0.91)	0.943	0.385	7.53 [0.06]
III. Europe and Central Asia, ECA (n=95)							
A. Fixed effects							
(A.1)	-3.974 (-7.39)	8.371 (9.42)	---	---	0.950	0.545	---
(A.2)	-15.833 (-2.33)	-8.902 (-0.89)	3.366 (1.70)	---	0.857	0.531	---
B. Random effects							
(B.1)	-3.157 (-8.89)	6.702 (7.80)	---	-7.505 (-2.58)	0.759	0.841	18.81 [0.00]
(B.2)	-9.115 (-0.18)	-1.981 (-0.18)	1.677 (0.72)	23.328 (0.57)	0.758	0.691	55.38 [0.00]

IV. Latin America and the Caribbean, LAC (n=147)

A. Fixed effects

(A.1)	-2.345 (-12.77)	3.647 (6.18)	---	---	0.910	0.327	---
(A.2)	-21.247 (-6.23)	-20.583 (-4.66)	4.795 (5.56)	---	0.930	0.288	---

B. Random effects

(B.1)	-2.183 (-15.41)	3.779 (7.45)	---	-1.498 (-0.77)	0.759	0.532	7.03 [0.03]
(B.2)	-18.918 (-5.13)	-17.748 (-3.75)	4.249 (4.59)	83.251 (4.42)	0.799	0.489	12.36 [0.00]

V. Middle East and North Africa, MENA (n=25)

	<i>Y</i>	<i>g</i>	<i>y*g</i>	<i>const</i>	<i>AR</i> ²	<i>SEE</i>	<i>H</i>
A. Fixed effects							
(A.1)	-5.811 (-6.50)	8.337 (4.28)	---	---	0.948	0.376	---
(A.2)	2.778 (0.38)	20.235 (1.93)	-2.417 (-1.15)	---	0.933	0.425	---
B. Random effects							
(B.1)	-3.963 (-10.14)	5.975 (4.32)	---	-1.553 (-0.43)	0.900	0.519	12.62 [0.01]
(B.2)	-10.336 (-2.15)	-2.454 (-0.40)	1.781 (1.34)	23.507 (1.30)	0.818	0.700	20.33 [0.00]

VI. South Asia, SAS (n=42)

A. Fixed effects

(A.1)	-2.479 (-14.71)	1.619 (4.18)	---	---	0.976	0.111	---
(A.2)	-11.060 (-3.17)	-8.271 (-2.10)	2.417 (2.45)	---	0.983	0.095	---

B. Random effects

(B.1)	-2.545 (-16.01)	1.617 (4.67)	---	7.735 (8.79)	0.940	0.176	1.48 [0.48]
(B.2)	-10.995 (-2.98)	-8.173 (-1.97)	2.396 (2.29)	42.211 (2.90)	0.935	0.184	0.14 [0.99]

VII. Sub-Saharan Africa, SSA (n=81)

A. Fixed effects

(A.1)	-1.297 (-8.18)	1.331 (5.96)	---	---	0.944	0.182	---
(A.2)	-9.640 (-4.89)	-7.414 (-3.66)	2.174 (4.37)	---	0.963	0.147	---

B. Random effects

(B.1)	-1.311 (-8.34)	1.379 (7.80)	---	3.645 (3.96)	0.827	0.319	0.24 [0.89]
(B.2)	-8.571 (-5.85)	-6.223 (-4.21)	1.862 (5.16)	33.211 (5.55)	0.865	0.282	3.1 [0.38]

Notes: The dependent variable is the log of the headcount ratio (\$1 per day standard); y is the log of mean income; and g is the log of the Gini coefficient. Heteroscedastic-consistent robust t-statistics are in parentheses. The data source for all variables is World Bank (2007). AR^2 is the adjusted coefficient of determination, and SEE is the standard error of estimate. H is the Hausman specification test statistic with the p-value in square brackets.

raising the poverty rate.¹² Given the magnitude of the positive sign of the interactive term, though, a larger income would ensure that the overall impact of g would be positive, as one would ordinarily expect. The positive sign of the interactive term further suggests that an increase in g would reduce the (negative) effect of y on poverty, thus counteracting the ability of income growth to reduce poverty.

According to the Hausman test statistics reported in Table 2, the FE results are statistically superior to those of RE generally.¹³ Hence, using equations (3) and (4), we select the respective FE models A.1 and A.2 as the basis for computing the respective income and inequality elasticities of poverty. These estimates are reported in Table 3.

It is observable from Table 3 that both the income and inequality elasticities differ substantially across regions. Based on the selected (starred) values, which are based on the model with the

¹² As previously observed above, this result is mainly because at a low mean income, the distribution would be concentrated close to the poverty line, so that redistribution would probably result in the non-poor becoming poor and thus raising the headcount ratio.

¹³ The only sets of results where the Hausman test fails to reject the null hypothesis of the statistical superiority of RE over FE are the cases of EAP (equation 1), SAS and SSA (both equations in each); however, the FE estimates are highly significant, suggesting that possible efficiency is not a problem for the FE model, as conjectured above.

Table 3: Inequality, income and poverty – income and inequality elasticities of poverty, global and by region

Region	Income elasticity	
	(A.1)	(A.2)
Global	-2.477	-2.579* [-5.012, -1.069]
East Asia and Pacific (EAP)	-2.950*	-2.949 [-3.053, -2.734]
Europe and Central Asia (ECA)	-3.974*	-3.836 [-4.904, -2.425]
Latin America and The Caribbean (LAC)	-2.345	-2.315* [-4.271, -1.349]
Middle East and North Africa (MENA)	-5.811*	-6.083 [-6.549, -5.323]
South Asia (SAS)	-2.479	-2.668* [-3.196, -2.133]
Sub-Saharan Africa (SSA)	-1.297	-1.325* [-2.327, -0.273]

Region	Inequality elasticity	
	(A.1)	(A.2)
Global	3.502	5.027* [-0.503, 7.998]
East Asia and Pacific (EAP)	3.042*	2.917 [2.612, 3.317]
Europe and Central Asia (ECA)	8.371*	8.204 [5.359, 10.511]
Latin America and The Caribbean (LAC)	3.647	5.337* [-2.039, 8.603]
Middle East and North Africa (MENA)	8.337*	7.899 [6.567, 11.198]
South Asia (SAS)	1.619	1.425* [0.227, 2.987]
Sub-Saharan Africa (SSA)	1.331	1.760* [-1.074, 4.357]

Notes: Estimates of the income and inequality elasticities are based on equations (3) and (4) of the text, respectively, using corresponding estimates from Table 2 (columns A.1 and A.2 refer to the fixed-effects results for equations (1) and (2) of the text, respectively) and the summary statistics from Table A1. The values in brackets indicate the lower and upper limits of the elasticity using the respective regional minimum and maximum values of the Gini or the mean income. A starred (*) value refers to the model with the better fit in each case, based on AR^2 , SEE, and/or precision of the coefficients. Furthermore, where model A.2 is selected (LAC, SAS, and SSA as well as Global), the interactive term is significant, thus implying inter-country differences in the elasticity.

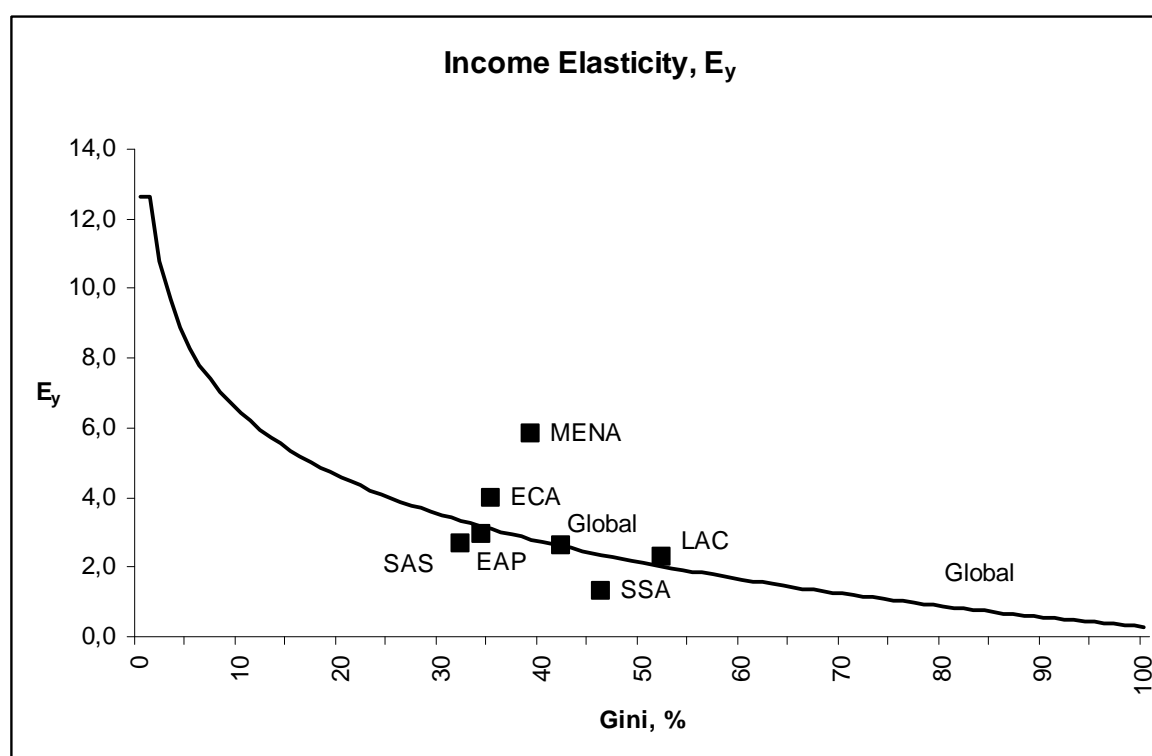
better fit, according to AR^2 , SEE and/or the precision of the coefficients, the income elasticity ranges as low as 1.3 (in absolute value) in SSA to as much as 5.8 (in absolute value) in MENA, with the global estimate of 2.6. Similarly, the inequality elasticity of poverty ranges from 1.6 in SAS to 8.4 in ECA and MENA, with a global estimate of 5.1.¹⁴ Thus, income growth or inequality changes would have different implications for poverty reduction in these regions. For example,

¹⁴ It is noteworthy that the present estimates are in line with those obtained from the more complicated model based on the assumption of a log-linear income distribution. For example, using that model, Fosu (2009) obtains for non-SSA the income and inequality elasticity estimates of -2.9 and 5.4, respectively, compared with the present respective estimates of -2.6 and 5.1 for the global sample, which includes SSA. In addition, Fosu (2009) reviews similar global estimates, as in particularly Bourguignon (2003), and finds them to be generally in line.

the effectiveness of growth in poverty reduction would be lowest in SSA and highest in MENA, while increasing inequality would appear to be least deleterious in SAS.

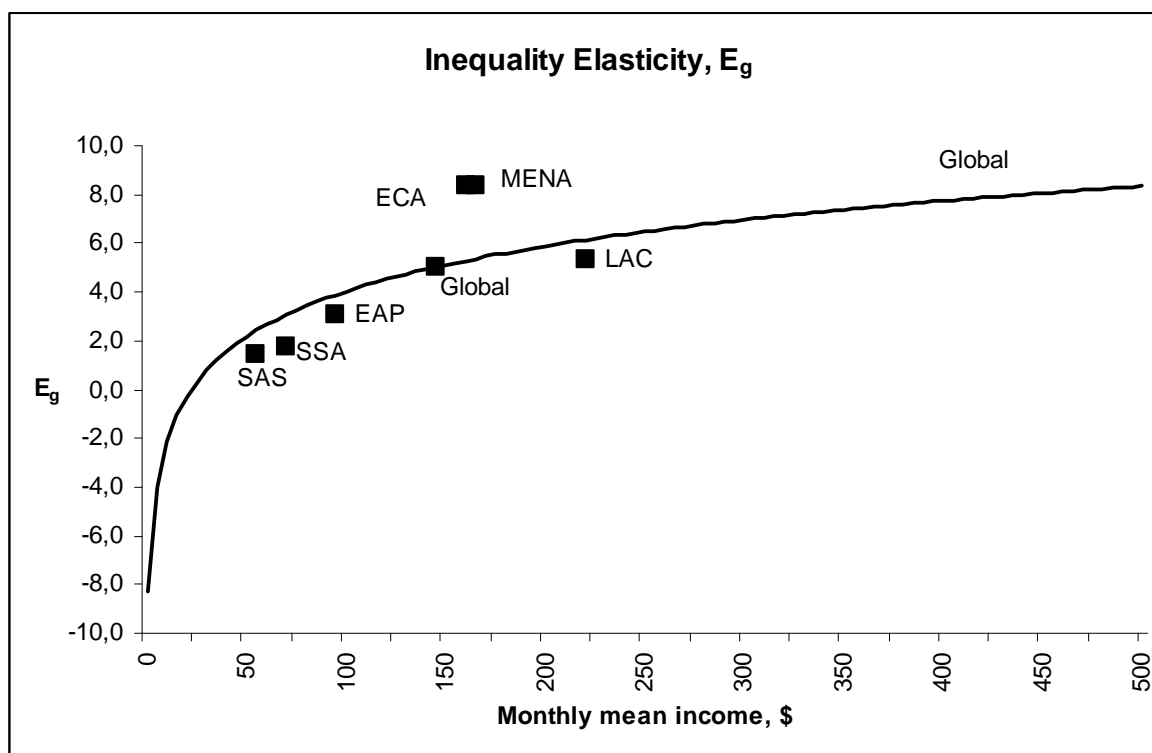
These regional differences in estimates of the income and inequality elasticities are summarised in Charts 2 and 3, respectively. Consistent with the prescriptions of Brambor et al. (2006), the graphs allow us to more fully explore the relationship between the (absolute-valued) income elasticity E_y and inequality, on the one hand, and between the inequality elasticity E_g and income, on the other hand. Chart 2 shows that E_y is monotonic with respect to inequality in the global sample and that the poverty-reduction effect of growth decreases steadily with the level of inequality, approaching zero as the Gini coefficient approaches 100 percent. Based on this chart, we could predict E_y for a country given the value of its Gini coefficient.

Chart 2: Income elasticity (E_y), globally and by region



Notes: The absolute value of the income elasticity is plotted here. The continuous line is the estimated elasticity function for the global sample based on the FE model (A.2) of Table 2. The regional elasticity estimates are also based on the FE models (A.1 or A.2 of Table 2). Points plotted here are the starred values representing estimates from the 'best' performing models from Table 2, evaluated at the respective regional mean values of the Gini coefficient, as reported in Table 3.

Chart 3: Inequality elasticity (E_g), globally and by region



Notes: The continuous line is the estimated elasticity function for the global sample based on the FE model (A.2) of Table 2. The regional elasticity estimates are also based on the FE models (A.1 or A.2 of Table 2). Points plotted here are the starred values representing estimates from the 'best' performing models from Table 2, evaluated at the respective regional mean values of the mean income, as reported in Table 3.

Similarly the graph of E_g based on the global sample shown in Chart 3 indicates that the inequality elasticity increases with the level of income. Both positive and negative values are, however, admissible. Below a monthly income of \$22, E_g is negative,¹⁵ implying that *reductions* in inequality would *increase* poverty. This finding then supports the theoretical result discussed earlier that at a sufficiently low level of income, decreasing inequality would rather increase poverty. Nonetheless, the average income levels are large enough for the global and regional samples so that E_g is positive for all regions.

¹⁵ From equation (4) in the text and model (A.2) of table 2, $E_g = 0 = -8.31 + 2.68y$ implies $y = 3.1$, so that $Y = e^{3.1} = 22.2$.

Note that the regional estimates do not necessarily fit the 'global' curves, suggesting that there are idiosyncratic regional differences. For example, as Chart 2 shows, while LAC and EAP are quite close to the global curve, SAS, ECA, SSA and MENA are not. SSA and SAS are over-predicted by the global norm; in contrast, ECA and especially MENA are under-predicted. Hence, income growth would decrease poverty less in SSA, for instance, than the global prediction would imply; the reverse would be the case for MENA and ECA. In terms of ranking, the income elasticity (absolute-valued) is highest for MENA, followed by ECA, LAC, EAP, SAS and SSA, in that order. Thus, one would expect the effectiveness of growth in reducing poverty to be highest in MENA and least in SSA. Alternatively put, relatively high growth would be required to achieve the MDGs in Africa, for instance, unless lower inequality levels were to prevail.

According to Chart 3, SAS, SSA, EAP and LAC are all below the global inequality elasticity curve, though they are very close, suggesting that the inequality elasticity would be (slightly) over-estimated by the global curve for these regions. In contrast, EAP and MENA are under-estimated. For these two regions, therefore, increasing inequality would raise poverty faster than the global model would imply. With respect to ranking, the highest inequality elasticity is enjoyed by ECA and MENA (about equally), followed by LAC, EAP, and SSA and SAS (about equally). For poverty reduction purposes, therefore, increasing inequality should not be as much of a concern in SAS and SSA as in ECA and MENA.¹⁶

Moreover, for particularly LAC, SAS and SSA, the estimated intervals of responsiveness of poverty to both income and inequality are significant (see Tables 2 and 3). Hence, a country-specific approach, based on the relative emphasis of income vis-à-vis inequality, would be required in order to most effectively reduce poverty. While growth is crucial if meaningful poverty reduction is to be achieved, for certain countries, especially those with high levels of inequality, reductions in inequality along with modest growth may be a relatively efficient strategy.

5. Conclusion

Analysing a global sample of 1980-2004 unbalanced panel data, the current study has presented comparative global evidence on the role of income inequality in poverty reduction. The evidence involves both an indirect channel via the tendency of high inequality to decrease the rate at which income is transformed to poverty reduction, and the tendency of rising inequality to increase poverty. Based on the basic-needs approach, an analysis-of-covariance model is estimated, with the headcount measure of poverty as the dependent variable, and the Gini coefficient and PPP-adjusted income as explanatory variables.

¹⁶ Of course, like a double-edged sword, rising inequality could, on the other hand, attenuate the effectiveness of income growth in reducing poverty as observed above.

The study finds that inequality affects poverty in two ways: (1) a higher level of inequality tends to limit the ability of income growth to reduce poverty; and (2) rising inequality generally increases poverty, at a rate that tends to rise with the level of mean income. The income and inequality elasticities differ considerably across regions and countries, suggesting that the responsiveness of poverty to inequality or income is region- and country-specific. Furthermore, the elasticity of poverty with respect to inequality tends to be larger than the income elasticity of poverty. Thus, to the extent that it does not adversely affect growth, reducing inequality may have a more effective favourable impact on poverty reduction than traditionally believed. Most importantly, though, the findings in the present study strongly suggest that optimal poverty-reduction strategies would require regional, and indeed country-specific, approaches that exert different emphases on income growth relative to inequality changes.

References

- Adams, R. H. (2004). 'Economic growth, inequality and poverty: estimating the growth elasticity of poverty'. *World Development*, 32(12), 1989-2014.
- Adelman, I. (1975). 'Development economics: a reassessment of goals'. *American Economic Review*, 65(2), May, 302-309.
- Ali, A. A. and Thorbecke, E. (2000). 'The state and path of poverty in Sub-Saharan Africa: some preliminary results'. *Journal of African Economies*, 9, Supplement 1, 9-40.
- Brambor, T., Clark, W. R. and Golder, M. (2006). 'Understanding interaction models: improving empirical analysis'. *Political Analysis*, 14(1), 63-82.
- Bourguignon, F. (2003). 'The growth elasticity of poverty reduction: explaining heterogeneity across countries and time periods', in Eicher, T. S. and Turnovsky, S. J. (eds.), *Inequality and Growth: Theory and Policy Implications* (pp.3-26). Cambridge, MA: MIT Press.
- Bruno, M., Ravallion, M. and Squire, L. (1998). 'Equity and growth in developing countries: old and new perspectives on policy issues', in Tani, V. and Chu, K.-Y. (eds.), *Income Distribution and High Growth*. Cambridge, MA: MIT Press.
- Datt, G. and Ravallion, M. (1992). 'Growth and redistribution components of changes in poverty: a decomposition to Brazil and India in the 1980s'. *Journal of Development Economics*, 38, 275-295.
- Dollar, D. and Kraay, A. (2002). 'Growth is good for the poor'. *Journal of Economic Growth*, 7(3), 195-225.
- Easterly, W. (2000). 'The effect of IMF and World Bank Programs on poverty'. Washington, DC: World Bank, mimeo.
- Epaulard, A. (2003). 'Macroeconomic performance and poverty reduction'. IMF Working Paper No. 03/72.
- Foster, J., Greer, J. and Thorbecke, E. (1984). 'A class of decomposable poverty measures'. *Econometrica*, 52(3), 761-766.
- Fosu, A. K. (2010). 'The effect of income distribution on the ability of growth to reduce poverty: evidence from rural and urban African economies'. *American Journal of Economics and Sociology*, 69(3), 1035-1053.
- Fosu, A. K. (2009). 'Inequality and the impact of growth on poverty: comparative evidence for Sub-Saharan Africa'. *Journal of Development Studies*, 45(5), 726-745.
- Fosu, A. K. (2008). 'Inequality and the growth-poverty nexus: specification empirics using African data'. *Applied Economics Letters*, 15(7-9), 563-566.

Kalwij, A. and Verschoor, A. (2007). 'Not by growth alone: the role of the distribution of income in regional diversity in poverty reduction'. *European Economic Review*, 51, 805-829.

Goldstein, J. S. (1985). 'Basic human needs: the plateau curve'. *World Development*, 13(5), 595-609.

Hicks, N. L. and Streeten, P. (1979). 'Indicators of development: the search for a basic needs yardstick'. *World Development*, 7(6), 567-580.

Kakwani, N. (1993). 'Poverty and economic growth with application to Cote d'Ivoire'. *Review of Income and Wealth*, 39, 121-139.

Ram, R. (1985). 'The role of real income level and income distribution in fulfilment of basic needs'. *World Development*, 13(5), 589-594.

Ravallion, M. (1997). 'Can high-inequality developing countries escape absolute poverty?' *Economics Letters*, 56, 51-57.

Solt, F. (2009). 'Standardizing the World Income Inequality Database'. *Social Science Quarterly*, 90(2), 231-242.

Streeten, P. (1977). 'The distinctive features of a basic needs approach to development'. *International Development Review*, 3, 8-16.

World Bank (2009). *POVCAL Online 2009*.

World Bank (2007). *POVCAL Online 2007*.

World Bank (2006a). *Global Monitoring Report 2006*. Washington, DC: World Bank.

World Bank (2006b). *World Development Report 2006*. Washington, DC: World Bank.

Appendix

Table A1. Inequality, income and poverty: summary statistics (1980-2004)

Region	Mean	SD	Min	Max
<i>A1.1: Poverty rate (headcount ratio, \$1 per day, \$32.78 monthly 1993-PPP)</i>				
Global	17.68	20.17	0.03	90.26
East Asia and Pacific (EAP)	18.27	18.53	0.27	82.03
Europe and Central Asia (ECA)	3.15	4.08	0.03	20.65
Latin America and The Caribbean (LAC)	10.81	10.47	0.20	52.90
Middle East and North Africa (MENA)	6.39	11.44	0.14	42.66
South Asia (SAS)	31.96	17.28	3.82	66.09
Sub-Saharan Africa (SSA)	42.80	22.35	1.91	90.26
<i>A1.2: Inequality (Gini, %)</i>				
Global	42.33	10.02	17.08	74.33
East Asia and Pacific (EAP)	34.62	7.28	17.08	48.63
Europe and Central Asia (ECA)	35.31	5.23	25.71	53.70
Latin America and The Caribbean (LAC)	51.84	5.81	34.48	63.42
Middle East and North Africa (MENA)	39.10	4.73	28.55	47.42
South Asia (SAS)	32.20	3.26	25.88	40.18
Sub-Saharan Africa (SSA)	45.82	8.84	28.90	74.33
<i>A1.3: Mean monthly income (1993-PPPadjusted \$)</i>				
Global	145.27	92.31	18.47	440.02
East Asia and Pacific (EAP)	94.90	55.35	25.60	258.10
Europe and Central Asia (ECA)	161.10	54.17	69.18	319.67
Latin America and The Caribbean (LAC)	222.64	90.60	47.82	440.02
Middle East and North Africa (MENA)	164.66	71.36	42.06	285.65
South Asia (SAS)	55.23	16.72	33.65	105.40
Sub-Saharan Africa (SSA)	68.01	45.49	18.47	224.59

Notes: All statistics are non-weighted and are computed from data for 1980-2004, except for India with additional data for 1977/78 (data source: World Bank, 2007).

The University of Manchester
**Brooks World
Poverty Institute**

MANCHESTER
1824

Executive Director
Professor David Hulme

Research Directors
Professor Armando Barrientos
Professor Rorden Wilkinson

Contact:

Brooks World Poverty Institute
The University of Manchester
Humanities Bridgeford Street Building
Oxford Road
Manchester
M13 9PL
United Kingdom

Email: bwpi@manchester.ac.uk

www.manchester.ac.uk/bwpi

The Brooks World Poverty Institute (BWPI) creates and shares knowledge to help end global poverty.

BWPI is multidisciplinary, researching poverty in both the rich and poor worlds.

Our aim is to better understand why people are poor, what keeps them trapped in poverty and how they can be helped - drawing upon the very best international practice in research and policy making.

The Brooks World Poverty Institute is chaired by Nobel Laureate, Professor Joseph E. Stiglitz.

www.manchester.ac.uk/bwpi