


Centre for Criminology and Criminal Justice: Homicide Landscape

Hannah Thompson, BA Criminology

 The Centre for Criminology and Criminal Justice is located at the University of Manchester and is at the forefront of critical research on crime policy, criminal law and criminal justice.

Objectives

I used the Homicide Index 2003-2016 from the Home Office to analyse whether homicide has declined in England and Wales.

In addition to this, I analysed parricide, argued to be an under-researched topic in British criminology, to explore the landscape in England and Wales.

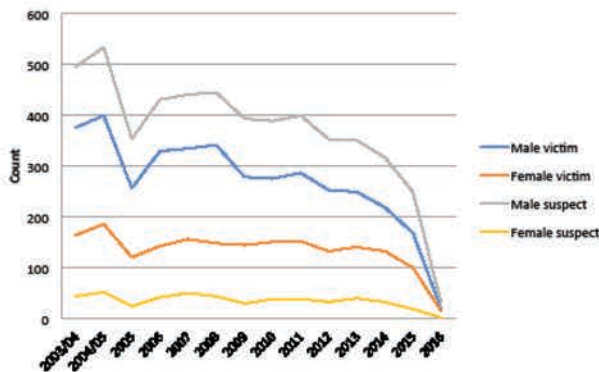
Finally, I began to look at domestic homicide but did not complete the analysis. However, this research project has been continued by my supervisor and criminology lecturer, Dr Caroline Miles.

Method

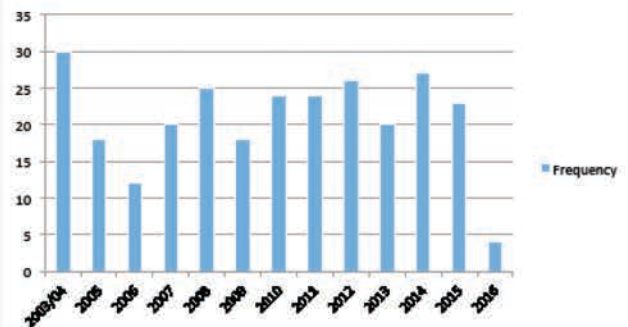
I predominately used SPSS to clean, sort and analyse my data. However, I also used Excel to make tables and graphs as the format was more aesthetically pleasing and clear.

SPSS was the clearest software to use, especially with such a large dataset as this one.

Cleaning the data was essential. I discovered there were a lot of missing and erroneous cases hidden within the data. This was the most difficult and at times, tedious process.



A graph to show the overall decline of homicide by gender from 2003-2016 in England and Wales.



A graph to show recorded parricides 2003-2016 in England and Wales.

Results and Conclusions

As reflected in the line graph, homicide in England and Wales has steadily declined from 2011 onwards*. This result is not the same for parricide as depicted in the bar graph. Parricide has indiscriminately risen and dropped between 2003 and 2016. Homicide, on the other hand, clearly sticks to a decline and this is best represented by combining the year with gender. Male suspects have steadily declined, which subsequently results in the decline of both male and female victims. Female suspects usually remain steady and low. Sociologically, this could point to a less-violent society despite what is reported in the media. I concluded that parricide was not a considerable contributory factor to the decline, given that parricide showed no clear pattern. *Reader should note only half of the year in 2016 was recorded, which is why there is such a steep drop in this year.