

Q-Step Internship: Race Relations Resource Centre

Marzuqa Iffat, BSocSc Sociology



I worked with Ahmed Iqbal Ullah Race Relations Resource Centre where the project involved mapping and analysing Manchester's Bangladeshi population and exploring the changes overtime. The overall result reveals a picture of a growing population. Also, the results highlight the role of the younger generation in this change.

Objectives

The main objective of this project was to explore the legacy of Ahmed Ullah who was murdered in Burnage School by exploring the evolving position of the Bangladeshi community in Manchester. The aim was to map and analyse Manchester's Bangladeshi population, exploring the changes overtime.

Method

- Secondary data search
- Handling, manipulating data and using basic formulae on excel spreadsheet
- Basic mapping of census data using ArcMap software
- Age-sex population pyramid



Key Findings

- The Bangladeshi population is growing and are more likely to live in households with dependant children
- Housing: they are more likely to live in houses than other residents of Manchester and are more likely to own their homes
- Health: they are more likely to have worse health outcomes than other residents in Manchester
- Education: the education attainment of Manchester's Bangladeshi has been consistently good and they are increasingly well qualified
- Employment: economic inactivity and unemployment have fallen in Manchester. Bangladeshi men are involved in wider range of occupation whilst Bangladeshi women have increased their participation in the labour market between 1991 and 2011.

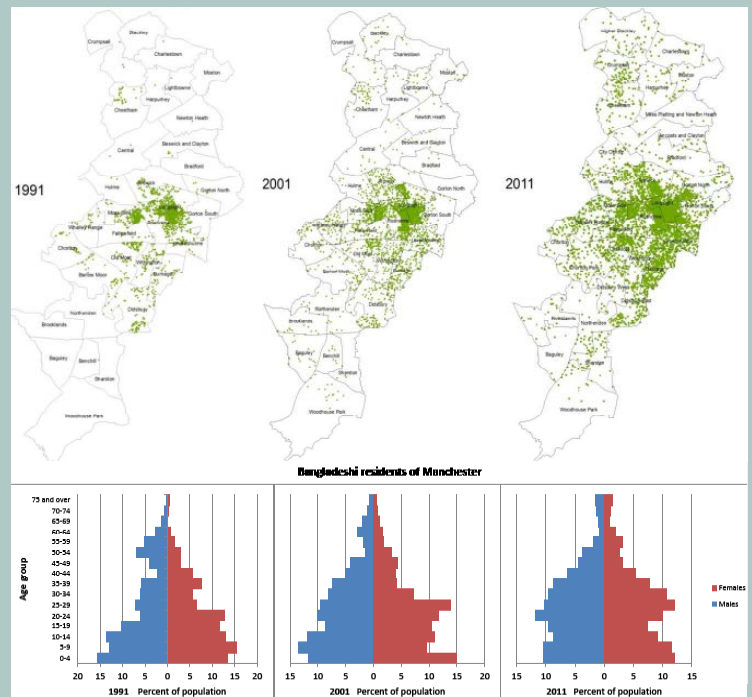
Weekly Overview

Week 1-2: the first two weeks was spent at the RRRRC. My first role included searching for existing literature and resources the library had on the Bangladeshi community. Performing a library catalogue search and compiling a spreadsheet bibliography on them.

Week 3-4: the next few weeks was based at the University of Manchester. It involved collecting census data using Nomis web and extracting/downloading variables such as ethnicity, gender, age, accommodation type, level of qualification, and employment from 1991, 2001 and 2011. Using the dataset I created age-sex population pyramid of Manchester's Bangladeshi population and the whole population of Manchester. I also produced coloured and dot density maps.

Week 5-6: after collecting data from census and manipulating them onto excel the next stage included interpreting the data, graphs and maps. I also made sense of other variable data such as education, employment, housing etc.

Week 7-8: the final weeks included drafting the interpretations and findings onto word document.



Skills Gained

- Before I started the internship I had insufficient knowledge of excel. I am now able to use excel and I have gained skills in basic formulae and manipulation
- I am able to create age-sex population pyramids and interpret them
- I have also gained experience in working with census data as well as searching and evaluating secondary data
- Overall, I have gained experience in working with quantitative data in real-life working environment